

# Business Item 2012-123:

Authorization to Negotiate and Execute an  
Amendment to the Construction and Cost  
Sharing Agreement with the City of East  
Bethel

**Presented to the Environment Committee**

**April 10, 2012**

**Bill Moeller, Assistant General Manager, Interceptor Services**

# PROPOSED EAST BETHEL WASTEWATER FACILITIES



- Interceptor Alignment
- Reclaimed Water Alignment
- Water Reclamation Plant Site
- Land Application Site







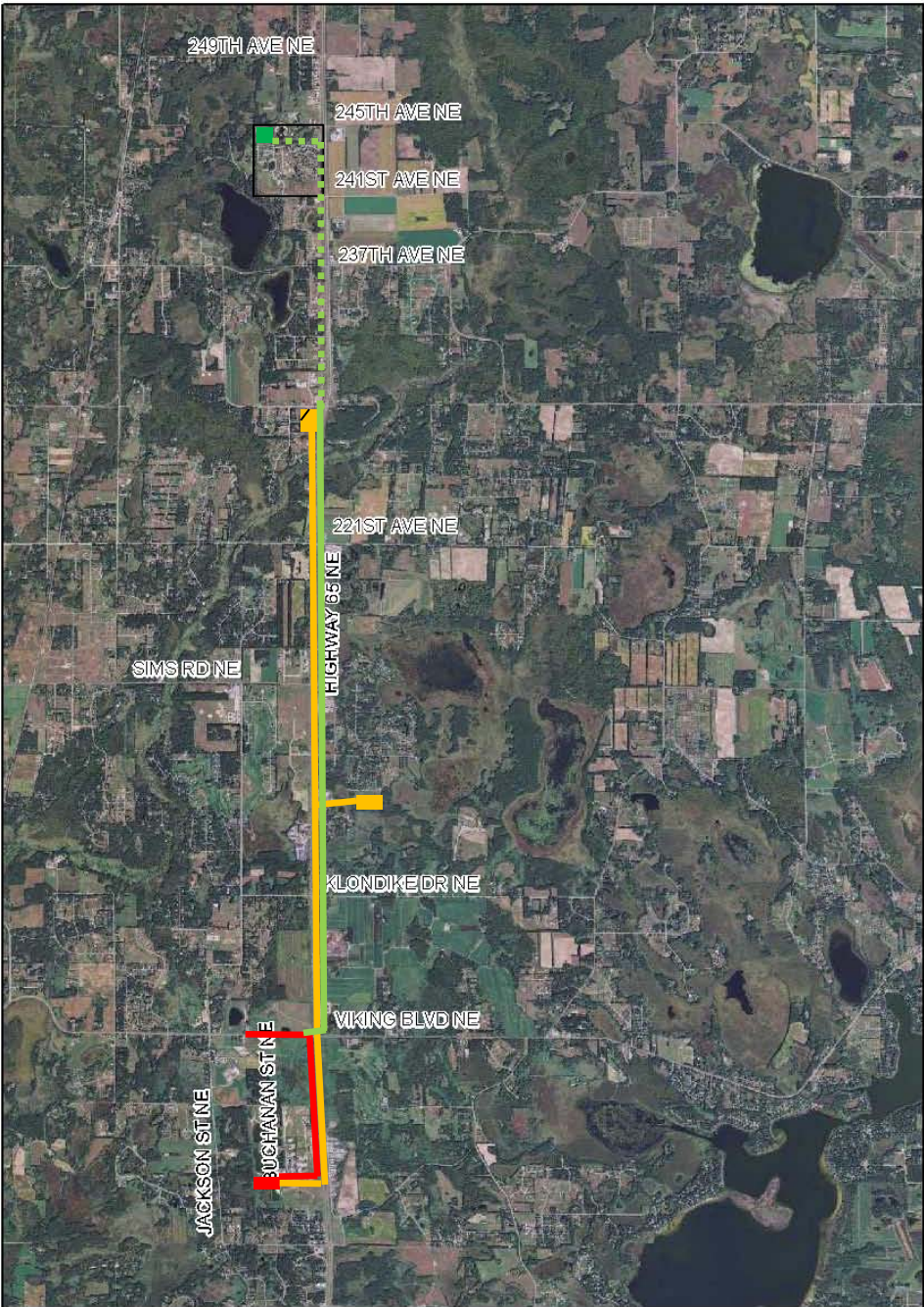
## East Bethel Facilities (Enlarged View)

### Current Construction Cooperation Agreement Facilities

- |   |                                |   |                            |
|---|--------------------------------|---|----------------------------|
|  | Interceptor Alignment          |  | City Watermain             |
|  | Reclaimed Water Pipe Alignment |  | City Water Treatment Plant |



# Proposed East Bethel Conveyance Project



## LEGEND

- Council Facilities
- Treatment Plant Site
- Land Application Site
- Interceptor
- Reclaimed Water
  
- City Facilities
- Treatment Plant Site
- Conveyance Facilities to be jointly constructed with Council
- Conveyance facilities to be constructed solely by City

