



Environment Committee

Meeting date: April 22, 2008

For the Metropolitan Council Meeting of May 14, 2008

Business Item

Item: 2008 – 116

ADVISORY INFORMATION	
Date:	April 15, 2008
Subject:	Authorization to Negotiate and Execute a Cooperation Agreement with the City of Bloomington for Phase I Improvements for L55 and 3-BN-499
District(s), Member(s):	District #5, Vacant
Policy/Legal Reference:	MN Statutes 473.504; Council Policy 3-3
Staff Prepared/Presented:	Bill Cook 651-602-1811; Bryce Pickart 651-602-1091
Division/Department:	MCES c/o William G. Moore 651-602-1162

Proposed Action

The Metropolitan Council authorizes its Regional Administrator to negotiate and execute a Cooperation Agreement with the City of Bloomington for the design and construction of Phase I improvements for lift station L55 and interceptor 3-BN-499.

Background

Current flows in the upstream reaches of 3-BN-499 and at lift station L55, serving southwest Edina and northwest Bloomington along I494, are reaching system capacity. Edina and Bloomington are currently redeveloping this area into higher-density development in accordance with Council policy to encourage growth along transportation corridors. Additional high-density redevelopment is planned. Projected ultimate flow rates exceed the existing capacity of L55 and the 3-BN-499 in the portion west of I35W.

Rationale

Improvements to lift station L55 and interceptor 3-BN-499 are needed to increase capacity and improve reliability and redundancy. Preliminary planning for the improvements, shown in the attached figure, determined that relocating and expanding L55 and its force main and constructing a new 24 to 30 inch diameter gravity interceptor had the lowest present worth cost among alternatives evaluated. The project's Phase I, needed by 2010, includes modifying L55 pumps and increasing the capacity of several interceptor segments. The Phase I Cooperation Agreement would define design and construction roles, design requirements, project phasing, and cost sharing. Future Cooperation Agreements would be developed when future improvements are needed.

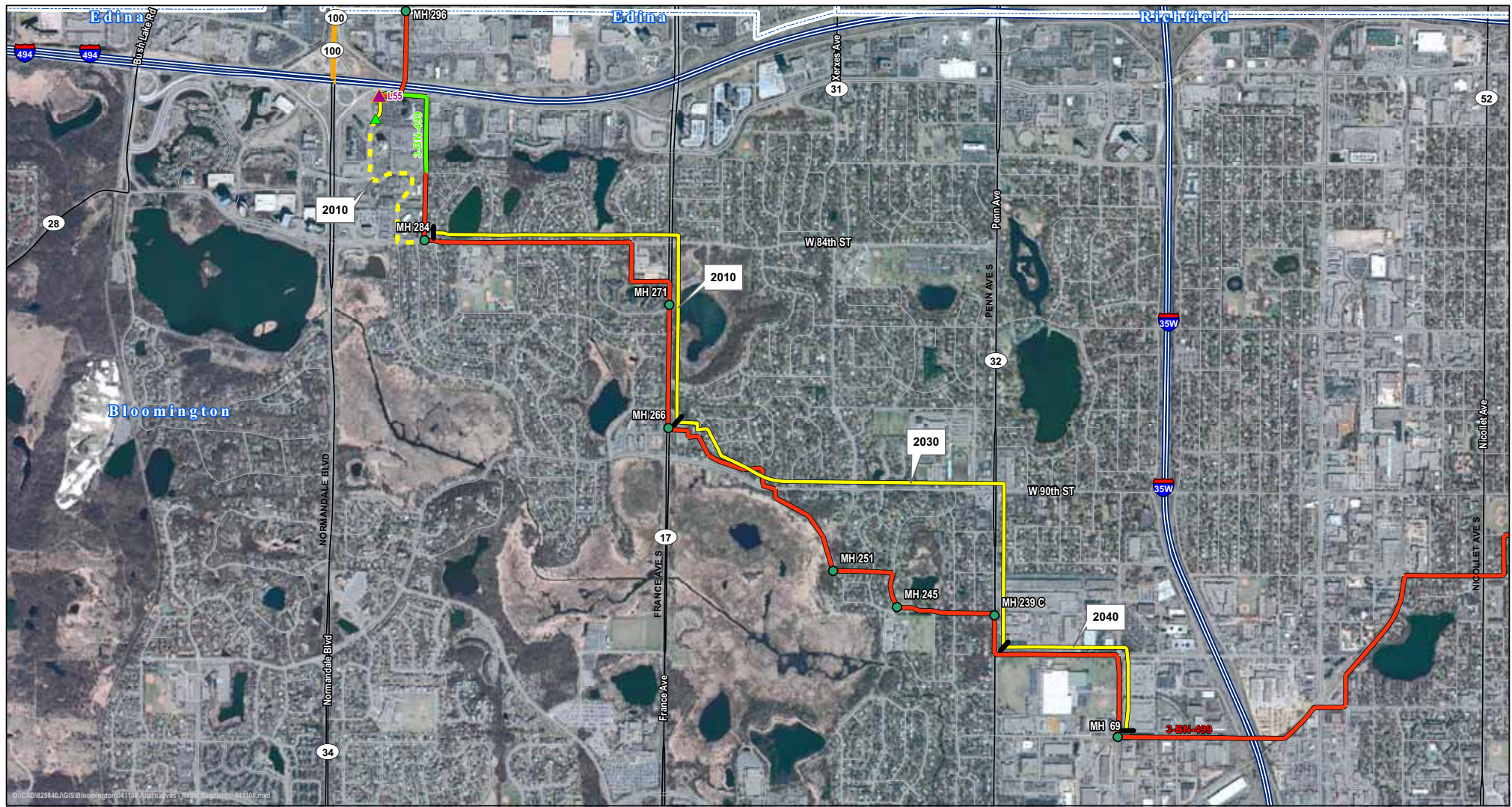
Funding

Estimated Project Costs	Phase I Cooperation Agreement	Total Project
Design Phase	\$0.5 M	\$7 M
Construction Phase	\$3.5 M	\$60 M
Total	\$4.0 M	\$67

Project No.	Year	Estimated Cost	Current Authorization	Unencumbered Funds	Amount Requested
8054	2008	\$4M	\$7M	\$5M	\$4M

Known Support/Opposition

The cities of Edina and Bloomington have requested by letter that MCES partner with them to provide additional capacity in the project area.



©: CAD:825840\GIS\Bloomington\041100_Aerial\Aerial - Relief Segments - 041109.mxd

Parallel Gravity Alternatives

*Bloomington/Edina
Bloomington, MN*

- Meter
- Existing MCES Lift Station
- Proposed L55 Relocation (4.20 MGD) 2010
- Gravity
- Force
- Siphon
- Municipal Boundaries
- Proposed Relief Forcemain (500', 18")
- Proposed Relief Gravity
- MH 284 to MH 266 (6960', 24") 2010
- MH 266 to MH 245 (7750', 30") 2030
- MH 245 to MH 69 (5468', 30") 2040

Metropolitan Council
Environmental Services

CH2MHILL

Howard R. Green Company

