



Subject: Dakota County, Comprehensive Plan Amendment
2030 Transportation Plan, Review File No. 20455-2

Proposed Action:

That the Metropolitan Council adopt the attached Advisory Comments and Review Record, and the following:

Adopt the attached review record and allow Dakota County to put the *2030 Transportation Plan* Comprehensive Plan Amendment (CPA) into effect.

Summary of Committee Discussion / Questions:

Sector Representative Patrick Boylan presented the Staff Report. There was no discussion.

Motion to move Staff recommendation and was seconded; vote was unanimous (9-0).

C Community Development Committee

Meeting date: May 7, 2012

For the Council Meeting of May 23, 2012

ADVISORY INFORMATION

Subject:	Dakota County, Comprehensive Plan Amendment <i>2030 Transportation Plan</i> , Review File No. 20455-2
District Members:	Districts 13, Richard Kramer; District 15, Steven Chávez; and, District 16, Wendy Wulff
Policy/Legal Reference:	Metropolitan Land Planning Act (Minn. Stat. § 473.175)
Staff:	Patrick Boylan, Principal Reviewer (651-602-1438) Phyllis Hanson, Manager, Local Planning Assistance (651-602-1566)
Division/Department:	Community Development/Planning & Growth Management

Proposed Action

That the Metropolitan Council:

Adopt the attached review record and allow Dakota County to put the *2030 Transportation Plan* Comprehensive Plan Amendment (CPA) into effect.

Background

The Metropolitan Council reviewed the County' s 2030 Comprehensive Plan Update on April 22, 2009

Rationale

The CPA conforms to regional system plans, is consistent with Council policies, and is compatible with the plans of other local communities and school districts.

Funding

No Metropolitan Council funding required.

Known Support / Opposition

There is no known opposition.

REVIEW RECORD
Dakota County 2030 Transportation Plan
Comprehensive Plan Amendment (CPA) File: 20455-2

BACKGROUND

- Dakota County is located South of the Minnesota and Mississippi Rivers in the south eastern portion of the metropolitan area.
- The Dakota County *2030 Transportation Plan* will cover all county roads, facilities, and policies for the entire County.
- The Council reviewed the County's 2030 Comprehensive Plan Update (Update) on April 22, 2009.

REQUEST SUMMARY

Dakota County is proposing to amend their existing transportation plan by amending maps, traffic volumes, and related policy statements to generally update the County's existing plan as a chapter of the County's *2030 Comprehensive Plan*.

OVERVIEW

Conformity with Regional Systems

The CPA conforms to the Regional System Plans for Parks, Transportation (including Aviation), and Wastewater, with no substantial impact on or departure from these plans.

Consistency with Council Policy

The CPA is consistent with the Council's *2030 Regional Development Framework*, with water resources management, and consistent with Council forecasts.

Compatibility with Adjacent Community Plans

The CPA will not have an impact on adjacent communities, school districts, or watersheds. The CPA application provided letters from adjacent communities stating no objection to the CPA.

PREVIOUS COUNCIL ACTIONS

The Council acted on the County's 2030 Update on April 22, 2009.
 In April, 2012, the Council received a comp plan amendment for Elko New Market, Blakeley Bluffs regional trail search corridor with expected action in May, 2012.

ISSUES

1. Does the amendment conform to the regional system plans?
2. Is the amendment consistent with the *2030 Regional Development Framework* and other Council policies?
3. Does the amendment change the County's forecasts?
4. Is the amendment compatible with adjacent local governmental units?

ISSUE ANALYSIS AND FINDINGS

CONFORMANCE WITH REGIONAL SYSTEMS

REGIONAL PARKS

Parks and Trails

Reviewer: Jan Youngquist, CD – Regional Parks System Planning, (651-602-1029)

The CPA conforms to the *2030 Regional Parks Policy Plan*.

TRANSPORTATION

Roads and Transit and Aviation

Reviewers: Elaine Koutsoukos, MTS, (651-602-1717)

The CPA conforms to the *2030 Regional Transportation Policy Plan (TPP)* and addresses all the applicable transportation and transit requirements of a comprehensive plan.

The transportation chapter includes an extensive analysis of existing and future transportation deficiencies and recommends improvements to the minor arterial, major and minor collector and local roadway networks. The County identifies the Cedar Avenue, I-35W, Red Rock, and Robert Street transitways.

Areas of Dakota County are within Market Areas II, III, and IV. Service options for Market Area II include regular-route locals, all-day expresses, small vehicle circulators, special needs paratransit (ADA, seniors), and ridesharing. Service options for Market Area III include peak-only express, small vehicle circulators, midday circulators, special needs paratransit (ADA, seniors), and ridesharing. Service options for Market Area IV include dial-a-ride, volunteer driver programs, and ridesharing.

Wastewater

Reviewer: Roger Janzig, ES – Engineering Services, (651-602-1119)

The CPA conforms to the *2030 Regional Water Resources Management Policy Plan (WRMPP)*. To assess the potential impacts to our interceptor system, prior to initiating any Transportation project in Dakota County, preliminary plans should be sent to Scott Dentz, Interceptor Engineering Manager (651-602-4503) at the Metropolitan Council Environmental Services for review and comment.

CONSISTENCY WITH COUNCIL POLICY

2030 REGIONAL DEVELOPMENT FRAMEWORK AND LAND USE

Reviewer: Patrick Boylan, CD – Local Planning Assistance, (651-602-1438)

The CPA conforms to the *2030 Regional Development Framework*.

COMPATIBILITY WITH PLANS OF ADJACENT GOVERNMENTAL UNITS AND PLANS OF AFFECTED SPECIAL DISTRICTS AND SCHOOL DISTRICTS

The CPA is compatible with the plans of neighboring communities, which were notified of the amendment in October, 2011.

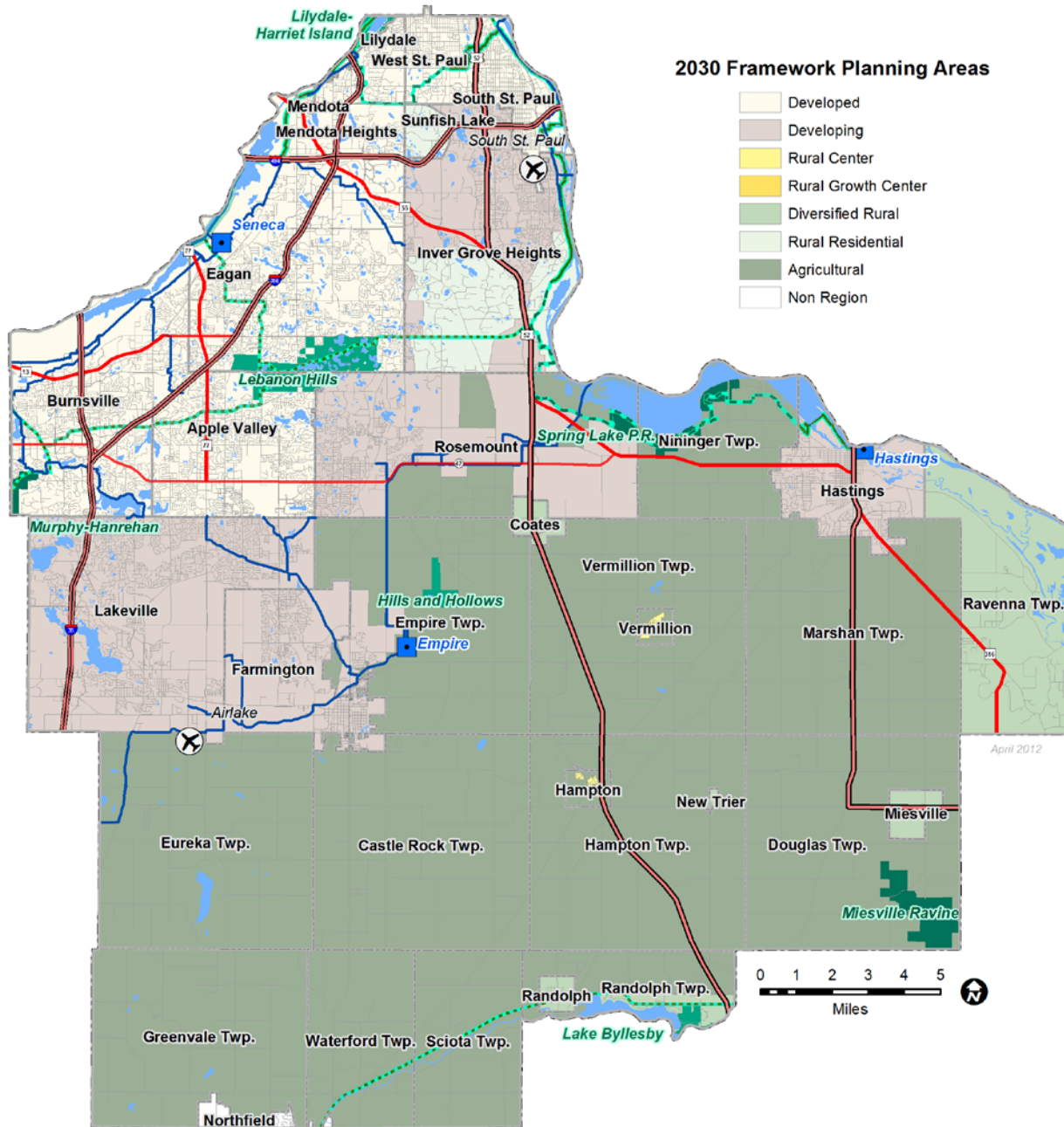
ATTACHMENTS

Figure 1: Dakota County 2030 Framework Planning Areas and Regional Systems

Figure 2: Dakota County Transportation System 2011

Figure 1: Dakota County 2030 Framework Planning Areas and Regional Systems

Dakota County 2030 Framework Planning Areas and Regional Systems



Regional Systems



Figure 2: Dakota County Transportation System 2011

