

A young girl with blonde hair, wearing a pink helmet, a white t-shirt, and red shorts, is riding a bicycle away from the camera on a paved path. The path is surrounded by lush green trees and foliage, creating a bright, sun-dappled atmosphere.

2010 Community Development Division Proposed Budget Overview

Presented to the Metropolitan Council

July 22, 2009

Guy Peterson, Director Community
Development Division

Division Structure

■ Planning & Growth Management

- Local Planning Assistance
- Regional Systems Planning and Growth Strategy
- Research

■ Housing and Livable Communities

- Livable Communities
- Metro HRA

Challenges in 2010

- Deliver the same amount of productivity and quality of work while not filling vacancies
- Complete implementation of the transfer of the FAHP units from public housing to Section 8 rental income stream
- Retain high interest and participation in the Livable Communities Act funding accounts with the reality of fewer dollars available for grants
- Renegotiation of the LCA affordable housing goals with participating communities
- Implement the new regional growth forecast model
- Complete the review of the 2008 Comprehensive Plan Updates

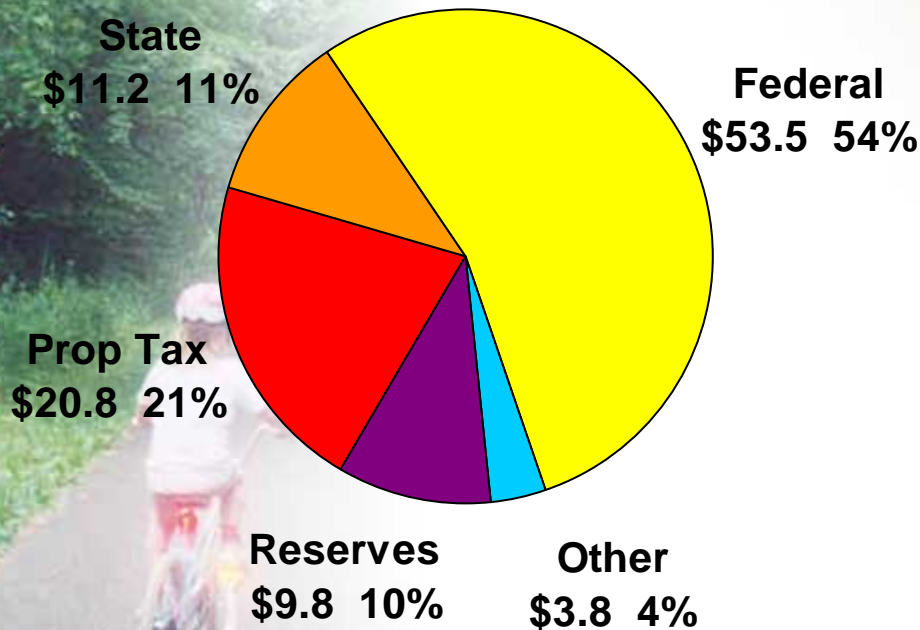
Opportunities in 2010

- FAHP conversion to Section 8 funding stream will mean greater revenues to enable unit improvements and upkeep
- The Legacy Amendment means a significant infusion of dollars to the regional parks systems beginning in 2010

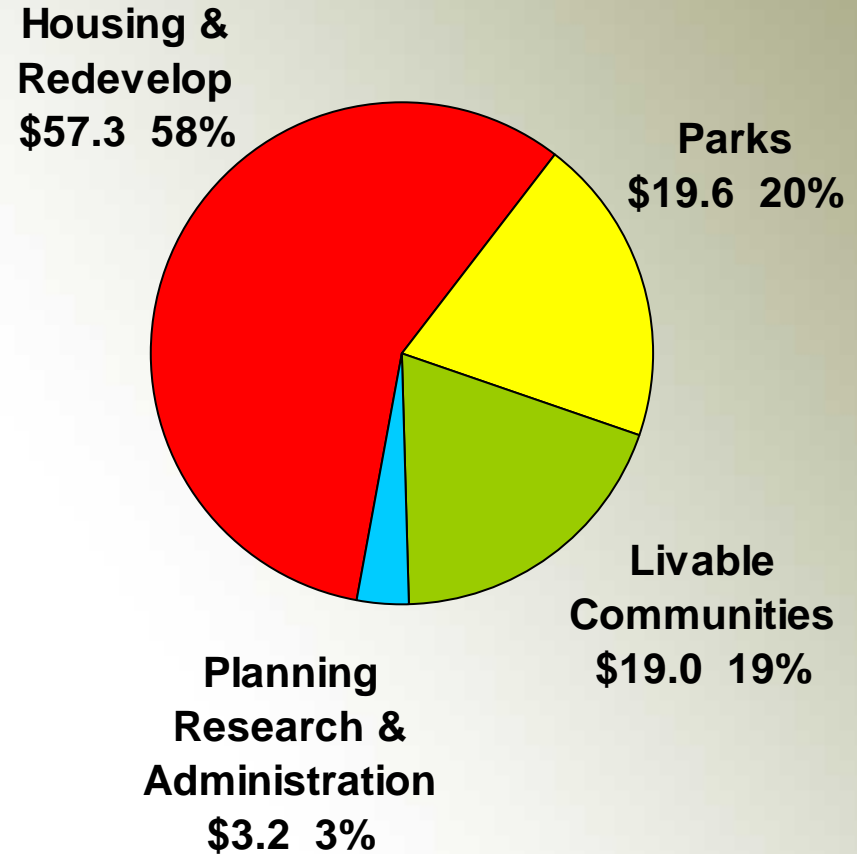
Proposed 2010 Budget

Community Development \$99.1M

Revenues & Sources

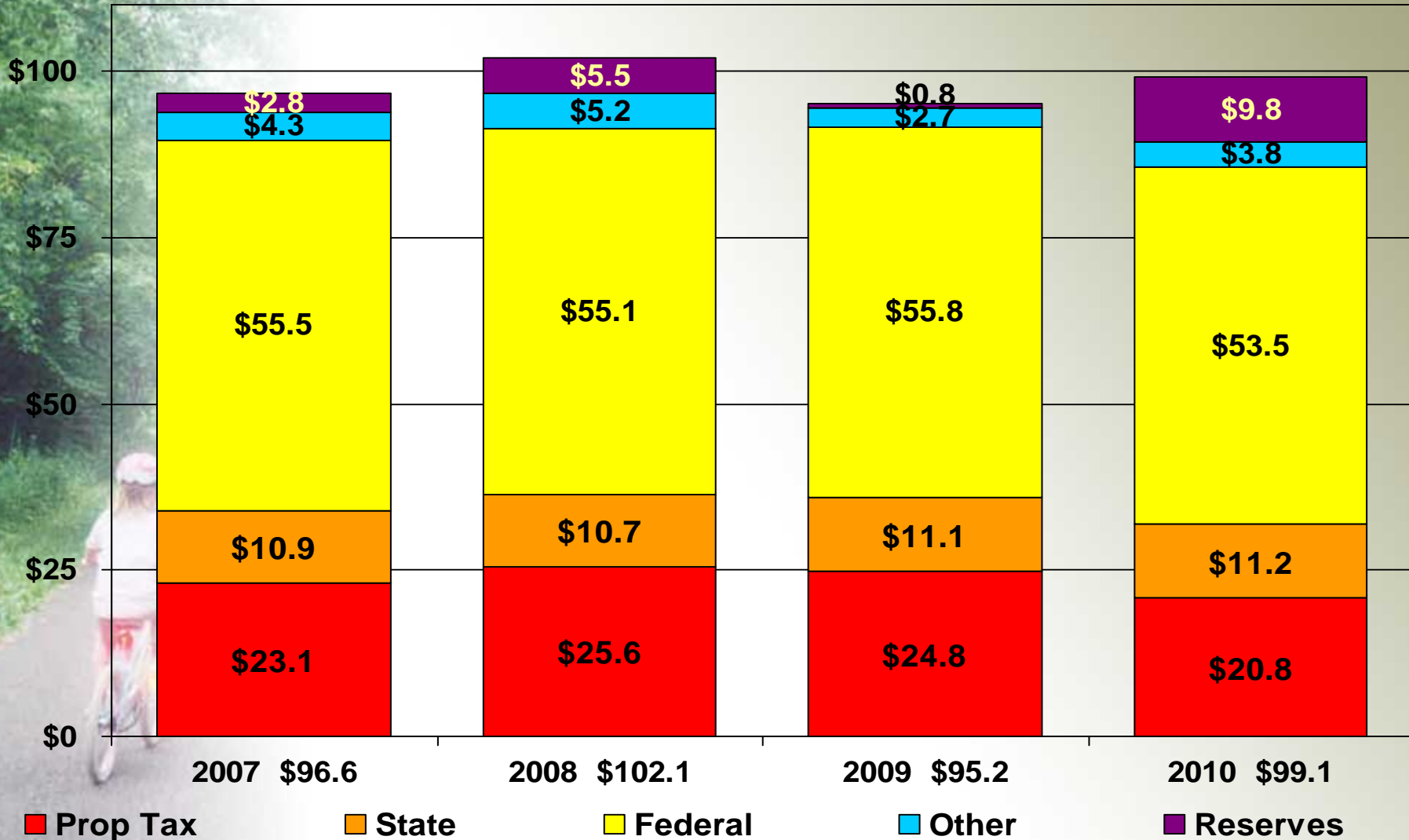


Expenditures & Uses



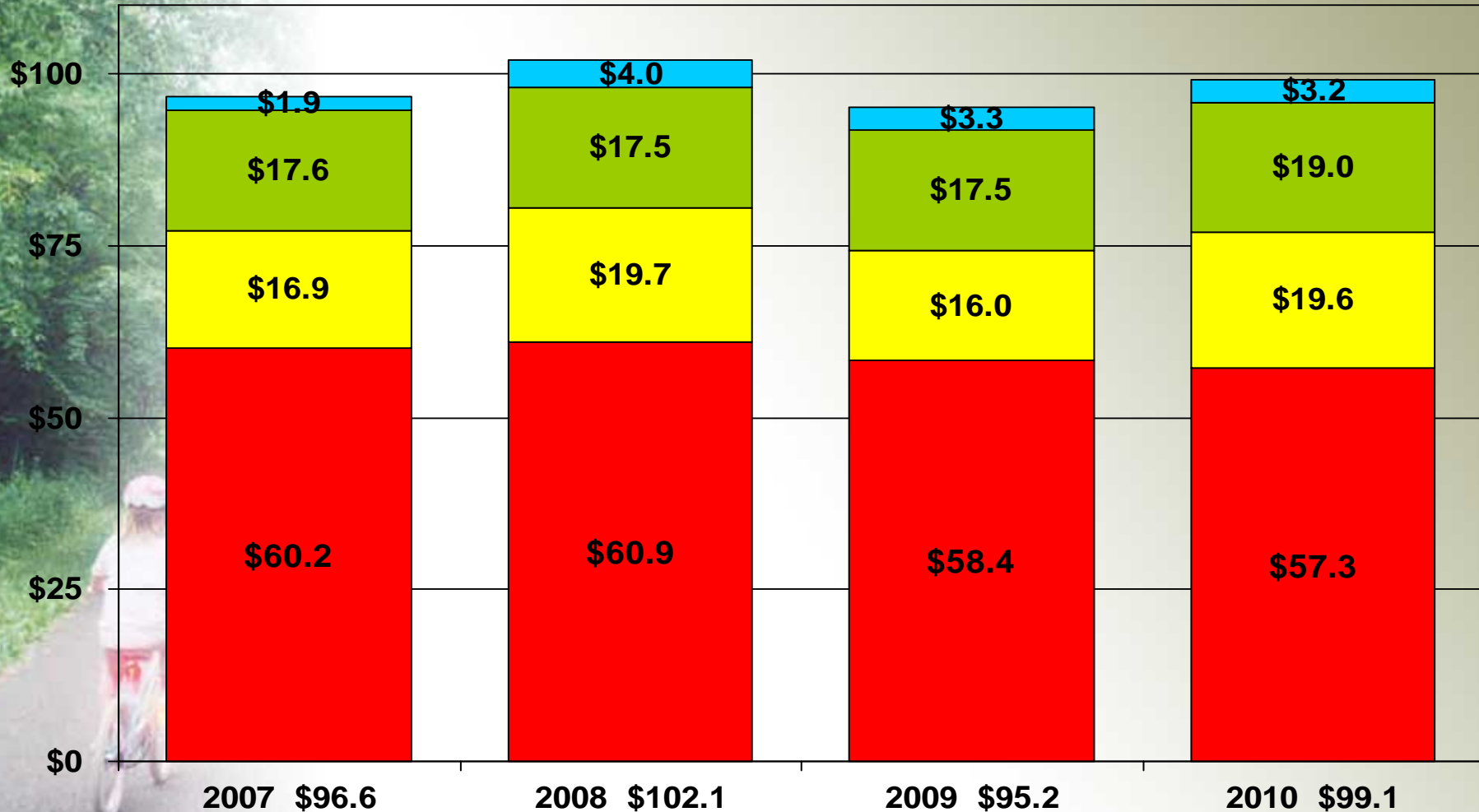
Revenues and Sources by Type

Community Development



Expenditures and Uses by Function

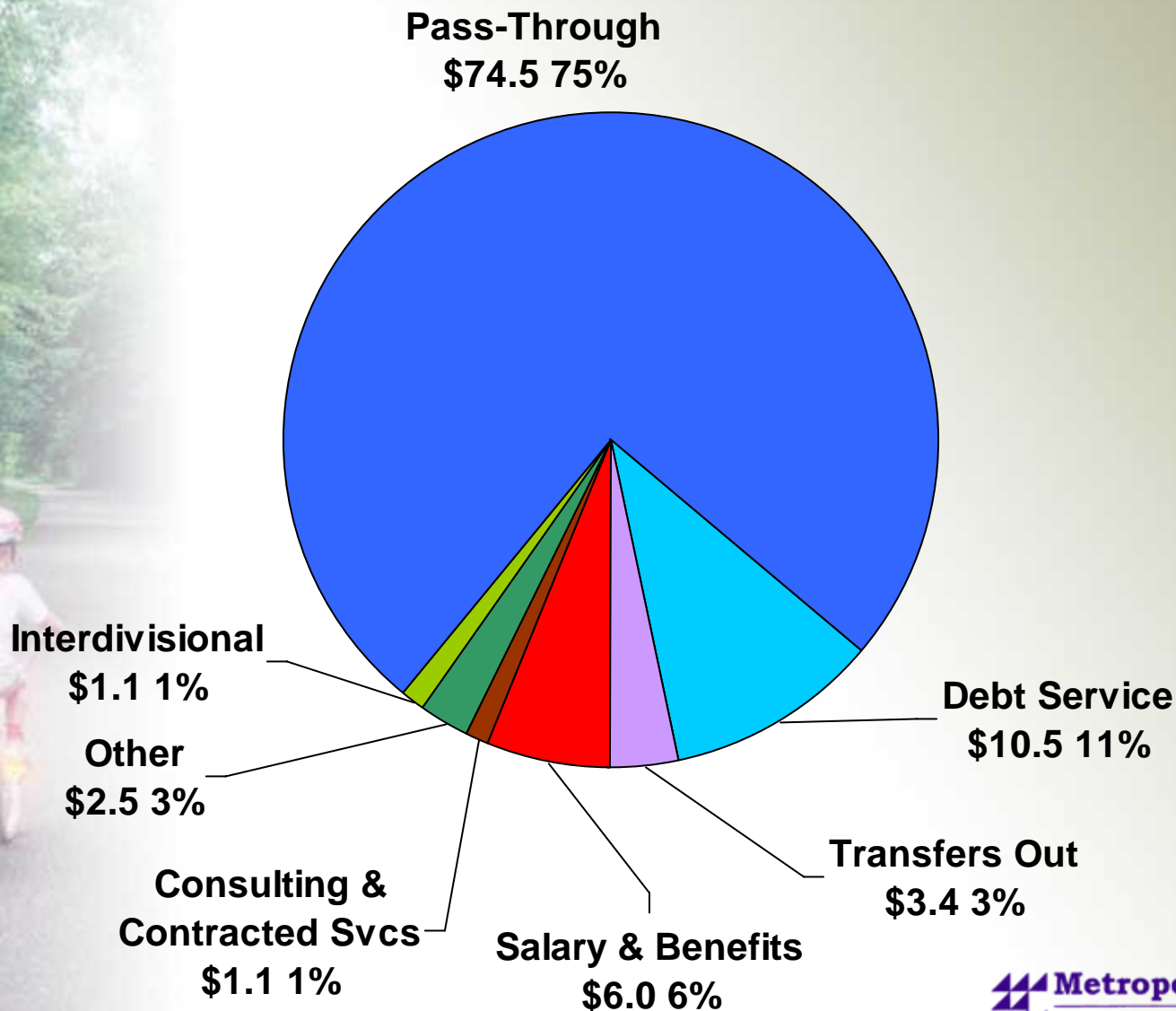
Community Development



■ Housing & Redevelop ■ Parks ■ Livable Communities ■ Planning Research & Admin

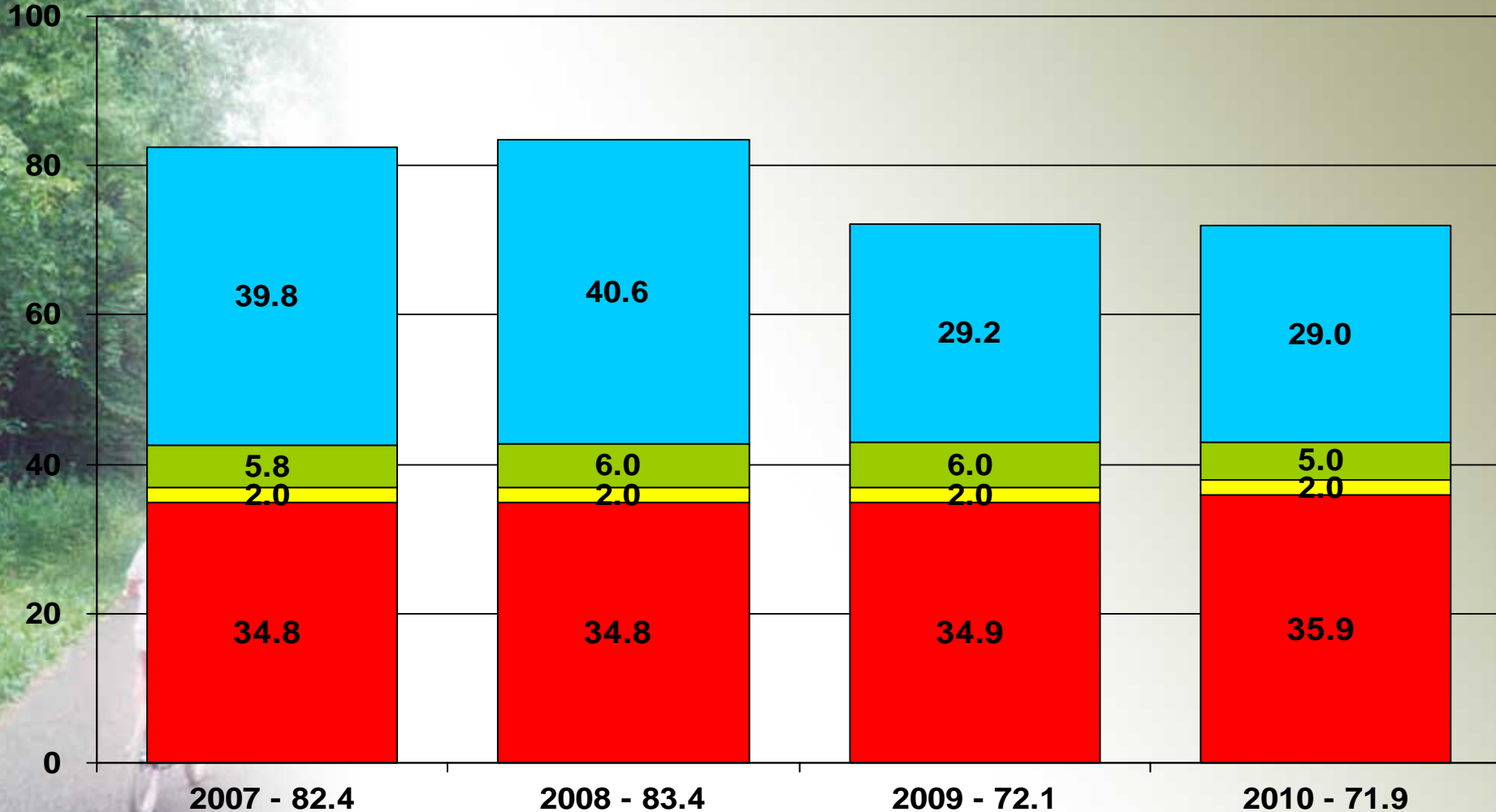
Proposed 2010 Expenditures and Uses by Type

Community Development \$99.1M



Full Time Equivalents by Function

Community Development



■ Housing & Redevelop ■ Parks ■ Livable Communities ■ Planning Research & Admin