

C Community Development Committee
Meeting date: November 19, 2012

For the Council Meeting of November 28, 2012

ADVISORY INFORMATION	
Subject:	Scott County 2011 System Statement Comprehensive Plan Amendment Review File No. 20402-4
District(s), Member(s):	District 4, Council Member Gary Van Eyll
Policy/Legal Reference:	Minnesota Statutes Section 473.175
Staff Prepared/Presented:	Tori Dupre, Senior Planner, Local Planning Assistance, 651-602-1621 LisaBeth Barajas, Manager, Local Planning Assistance, 651-602-1895
Division/Department:	Community Development / Planning & Growth Management

Proposed Action

That the Metropolitan Council:

1. Adopt the attached review record and allow Scott County to put the 2011 System Statement comprehensive plan amendment (CPA) into effect.
2. Advise the County to implement the advisory comments in the Review Record for Parks and forward the corrected maps to the Metropolitan Council staff following the County Board approval.
3. Find that the proposed CPA does not change the County's forecasts.

Background

The Council reviewed the Scott County Comprehensive Plan Update (2009-49, Review No. 20402-1) on February 25, 2009, and allowed the County to put it into effect. Scott County has submitted three comprehensive plan amendments (CPA) since the Council's review of the Update as described in the review record.

The proposed amendment is in response to the 2011 System Statement showing updates to the *2030 Regional Parks Policy Plan*. The CPA proposes revisions to the Comprehensive Plan's Parks section to acknowledge regional trail search corridors added to the regional parks system in the 2010 update to the *2030 Regional Parks Policy Plan*.

Rationale

The proposed CPA conforms to regional system plans, is consistent with Council policies, and is compatible with the plans of other local communities, school districts, and affected special districts.

Funding

None

Known Support / Opposition

There is no known opposition.

REVIEW RECORD

Scott County Comprehensive Plan Amendment (CPA) 2011 System Statement Amendment

Review File No. 20402-4, Council Business Item No. 2012-353

BACKGROUND

Scott County is located in the southwestern corner of the metropolitan area, with the Minnesota River forming its northern and western boundary. The *2030 Regional Development Framework* (RDF) generally identifies the County as *Developing* in the northeast, *Diversified Rural* in the west, central and southeast, and *Agricultural* in the southwest.

In 2010, Scott County had 146,340 residents, 53,610 households and 44,810 jobs. By 2030, the Metropolitan Council forecasts the County to reach 221,770 residents; 86,990 households; and 56,190 jobs.

The Council reviewed Scott County's Comprehensive Plan Update (Review No. 20402-1) on February 25, 2009. This is the third CPA to the plan update. The first amendment (Review No. 20402-2, received July 2011) updated the County's water resources management plan. The second amendment (Review File No. 20402-3, approved September 28, 2011) updated text and maps in the transportation section, and changed the land use of 11 acres from Commercial Reserve to Commercial/Industrial. These CPAs did not change Scott County's 2030 forecasts.

In July 2012, the Council granted an extension to the County's systems statement response submittal deadline allowing the County Board time to adopt and incorporate regional park master plans for Blakeley Bluffs Park Reserve, and Doyle-Kennefick Regional Park, and Cedar Lake Farm Regional Park.

REQUEST SUMMARY

In response to the 2010 changes to the *2030 Regional Parks Policy Plan (RPPP)*, the proposed amendment updates the comprehensive plan maps and text to acknowledge the following trail search corridors: Big Rivers Regional Trail Extension, Prior Lake Outlet Regional Trail, Louisville Regional Trail, Elko New Market-Blakeley Regional Trail, Elko New Market-Doyle Kennefick Regional Trail, and Blakeley Bluffs Regional Trail Extension.

The CPA also incorporates the planned alignments of the following trails: Scott West Regional Trail, Spring Lake Regional Trail, and the UP Rail Line/Minnesota River Bluffs Regional Trail.

The CPA plans for Cedar Lake Farm Regional Park, Doyle Kennefick Regional Park and Blakeley Bluffs Park Reserve, by guiding the future land use of the parcels within the park boundaries as "Park/Open Space." The CPA also recognizes *The Landing* as a special recreation feature within the regional parks system, and identifies the facility as being owned and operated by Three Rivers Park District.

OVERVIEW

Conformance with Regional Systems	The CPA conforms to the Regional System Plans for Parks, Transportation (including Aviation), and Wastewater, with no substantial impact on, or departure from, these plans.
Consistency with Council Policies	The CPA is consistent with the Council's RDF, with water resources management, and is consistent with Council forecasts.
Compatibility with Plans of Adjacent Jurisdictions	The CPA will not have an impact on adjacent communities, school districts, or watershed districts, and is compatible with the plans of those districts.

PREVIOUS COUNCIL ACTIONS

- The Council acted on Scott County's Comprehensive Plan Update on February 25, 2009 (Review File No. 20402-1, Business Item 2009-49)
- The Council accepted the Water Resources Management CPA on July 7, 2011 (Review File No. 20402-2, administrative review).
- The Council approved the Transportation and Commercial Land Use Change CPA on September 28, 2011 (Review File No. 20402-3, Business Item 2011-256)

ISSUES

- I. Does the amendment conform to the regional system plans?
- II. Is the amendment consistent with the *2030 RDF* and other Council policies?
- III. Does the amendment change Scott County's forecasts?
- IV. Is the amendment compatible with the plans of adjacent local governmental units and affected jurisdictions?

ISSUE ANALYSIS AND FINDINGS

CONFORMANCE WITH REGIONAL SYSTEMS

REGIONAL PARKS

Reviewer: Jan Youngquist (651-602-1029)

The CPA conforms to the *2030 Regional Parks Policy Plan (RPPP)*. The CPA acknowledges the county-wide parks system changes, and reflects these in maps and text in the County comprehensive plan chapter VII, *Parks and Trails*.

Specifically, the CPA acknowledges the regional trail search corridors added to the Regional Parks System as part of the 2010 update to the *RPPP*: Big Rivers Regional Trail Extension, Prior Lake Outlet Regional Trail, Louisville Regional Trail, Elko New Market-Blakeley Regional Trail, Elko New Market-Doyle Kennefick Regional Trail, and Blakeley Bluffs Regional Trail Extension. It incorporates the planned alignments of the following trails: Scott West Regional Trail, Spring Lake Regional Trail, and the UP Rail Line/Minnesota River Bluffs Regional Trail. The CPA plans for Cedar Lake Farm Regional Park, Doyle Kennefick Regional Park, and Blakeley Bluffs Park Reserve by guiding the future land use of parcels within the boundaries of the parks as

"Park/Open Space." Finally, the CPA recognizes *The Landing* as a special recreation feature within the regional parks system, and identifies the facility as being owned and operated by Three Rivers Park District.

Advisory comment

The Metropolitan Council approved the master plan for Cedar Lake Farm Regional Park on March 14, 2012. The approved park boundary is different than the boundary shown in the CPA. Figure 2 shows this minor park boundary discrepancy, with the Council-approved boundary in red and the discrepancy circled in black.

Therefore, the Council recommends that the boundary of Cedar Lake Farm Regional Park be corrected on the Scott County Regional Park System Map, the Cedar Lake Farm Regional Park Comprehensive Plan Amendment Map, and the 2030 Planned Land Use Map, prior to the Scott County Board's final adoption of the CPA. The final Board action to adopt the corrected maps should be sent to the Metropolitan Council for our records.

TRANSPORTATION

Reviewer: Ann Braden (651-602-1705)

The CPA conforms to the *2030 Transportation Policy Plan*. The CPA does not propose changes to the transportation element of the Plan.

CONSISTENCY WITH COUNCIL POLICY

The proposed CPA is consistent with the Council's policies for land use, housing, subsurface sewage treatment systems, and water supply. The CPA is consistent with the *2030 Regional Development Framework* (RDF) policies and does not change the County's CPU forecasts.

COMPATIBILITY WITH PLANS OF ADJACENT GOVERNMENTAL UNITS AND PLANS OF AFFECTED SPECIAL DISTRICTS AND SCHOOL DISTRICTS

The proposed CPA is compatible with the plans of adjacent jurisdictions. No compatibility issues with plans of adjacent governmental units and plans of affected special districts and school districts were identified.

ATTACHMENTS

- Figure 1: Scott County's Updated Planned Parks and Trails Map
- Figure 2: Cedar Lake Farm Regional Park Master Plan Approved Boundary
- Figure 3: Cedar Lake Farm map from CPA

Figure 1: Scott County's Updated Planned Parks and Trails Map



Figure 2: Cedar Lake Farm Regional Park Master Plan Approved Boundary Discrepancy circled in black

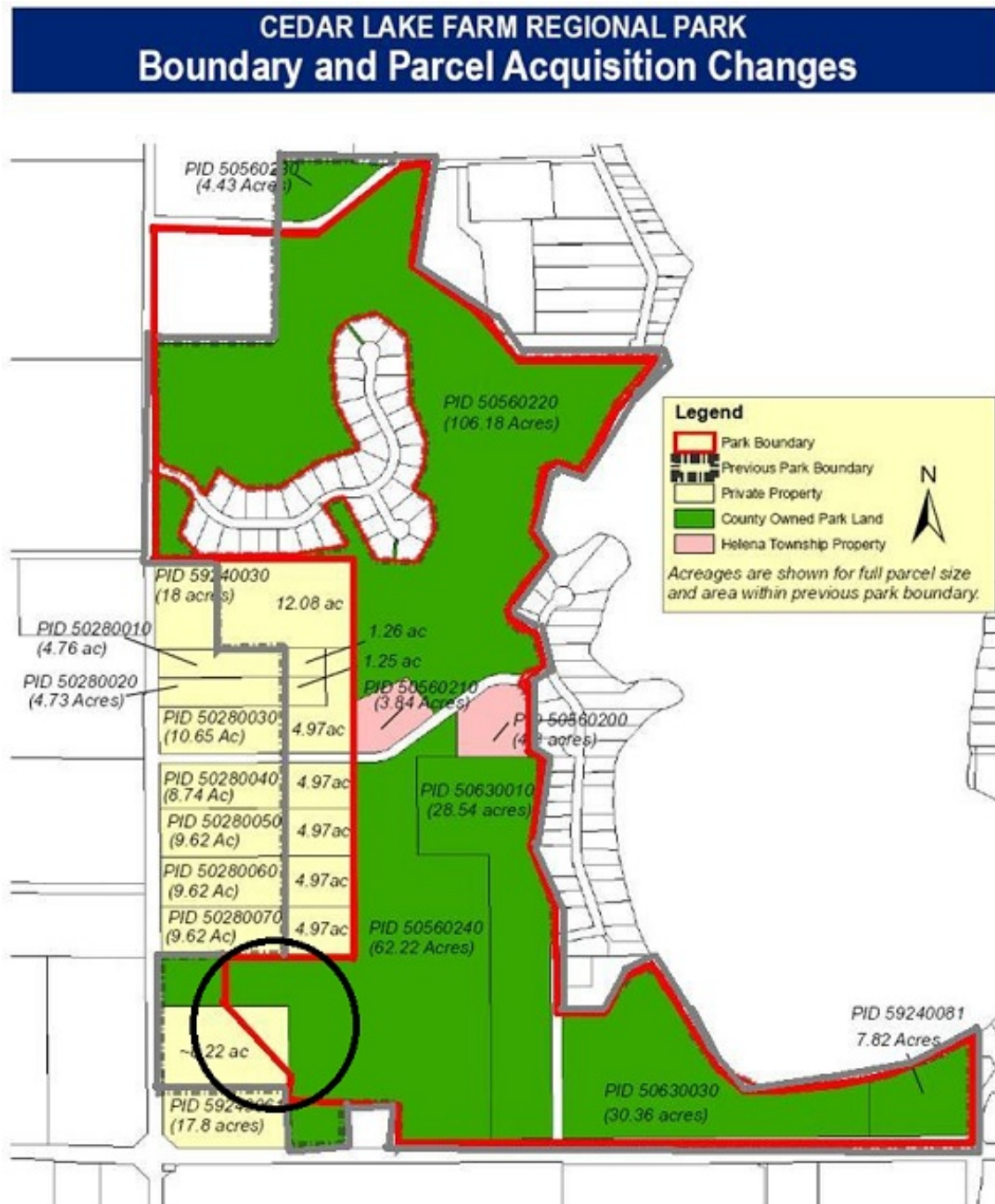


Figure 3: Cedar Lake Farm Regional Park from CPA



Master Plan

Cedar Lake Farm Regional Park



Scott County 2030 Comprehensive Plan Update – Parks & Trails Amendments 2012