

Affordable Housing Opportunities for Persons with Disabilities

The Council's Involvement

Community Development Committee

November 15, 2010



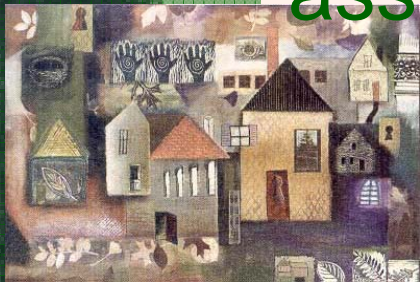
Council's Activities

- ▶ Rental Subsidies – Metro HRA
- ▶ Production Assistance – Livable Communities



Metro HRA Programs

- ▶ Total Households Served = 6681
- ▶ Households Served with Disabled HoH = 2656 - 40% of all assisted households
- ▶ Households Served with one or more disabled members = 3768 - 57% of all assisted households



Metro HRA Programs

- ▶ Section 8 = 6100
- ▶ Shelter Plus Care = 250 Households
- ▶ HOPWA = 51 Households
- ▶ Bridges = 220 Households



Livable Communities

- ▶ LHIA, LCDA, TBRA, LAAND used in conjunction with and to leverage other sources of funding to create new affordable units
- ▶ Partner with Minnesota Housing and Family Housing Fund



Minnesota Housing

- ▶ MHFA Financed and HTC
- ▶ Design Standard – Accessibility Requirement
- ▶ Minimum of 3% of total units
- ▶ Multifamily new construction



Housing Options Report

- ▶ December 15, 2010
- ▶ Department of Human Services
- ▶ Maximize availability and affordability of housing choices available to persons with disabilities



Housing Options Report

- ▶ Improved access to rent subsidies
- ▶ Use of cooperatives, land trusts, limited equity ownership models
- ▶ Acquiring ownership interest or promoting publicly owned housing
- ▶ Consumer ownership models



Affordable Housing Opportunities for Persons with Disabilities

The Council's Involvement

Community Development Committee

November 15, 2010

