

2012 Third Quarter Regional Ridership Report

Transportation Committee

November 26, 2012



Third Quarter 2012 to 2011 Comparison by Provider

<u>Provider</u>	<u>Rides</u>	<u>% Change</u>
Metro Transit	20.6 M*	-1.1%
MTS - Contracted	1.31 M	1.7%
Suburban Providers	1.35 M	-1.8%
University of MN	528,500	-2.1%
Ramsey Star	11,100	-15.5%
	-----	-----
Total	23.8 M	-1.0%

* Excludes 189,060 Maple Grove contracted rides



Third Quarter 2012 to 2011 Average Weekday Ridership by Provider

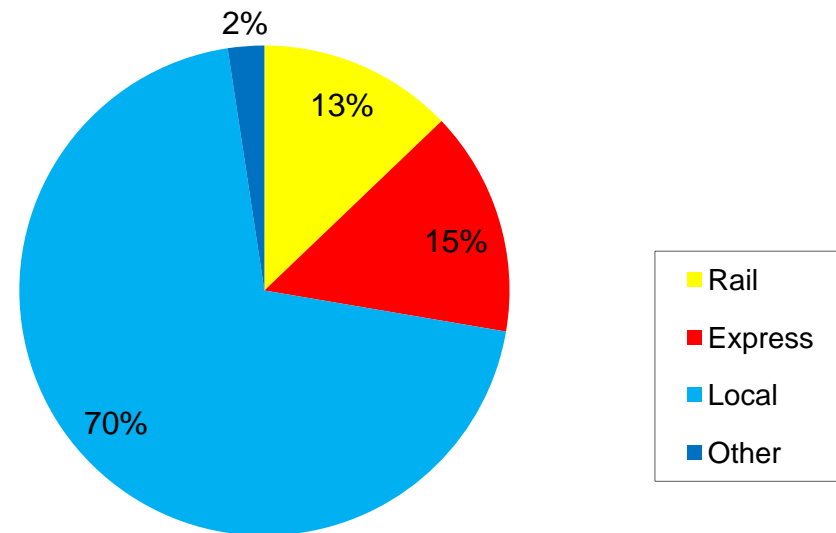
<u>Provider</u>	<u>Average Weekday Rides</u>	<u>% Change</u>
Metro Transit	267,046*	-0.2%
MTS - Contracted	18,856	3.3%
Suburban Providers	21,396	-0.3%
University of MN	8,388	-0.5%
Ramsey Star	177	-14.1%
	-----	-----
Total	315,849	-0.1%

* Excludes Maple Grove contracted rides



Third Quarter 2012 by Service Type

- ❖ Rail – 3.1 M
- ❖ Express Bus – 3.5 M
- ❖ Local Bus – 16.6 M
- ❖ Other* – .57 M
- ❖ Total – 23.8 M

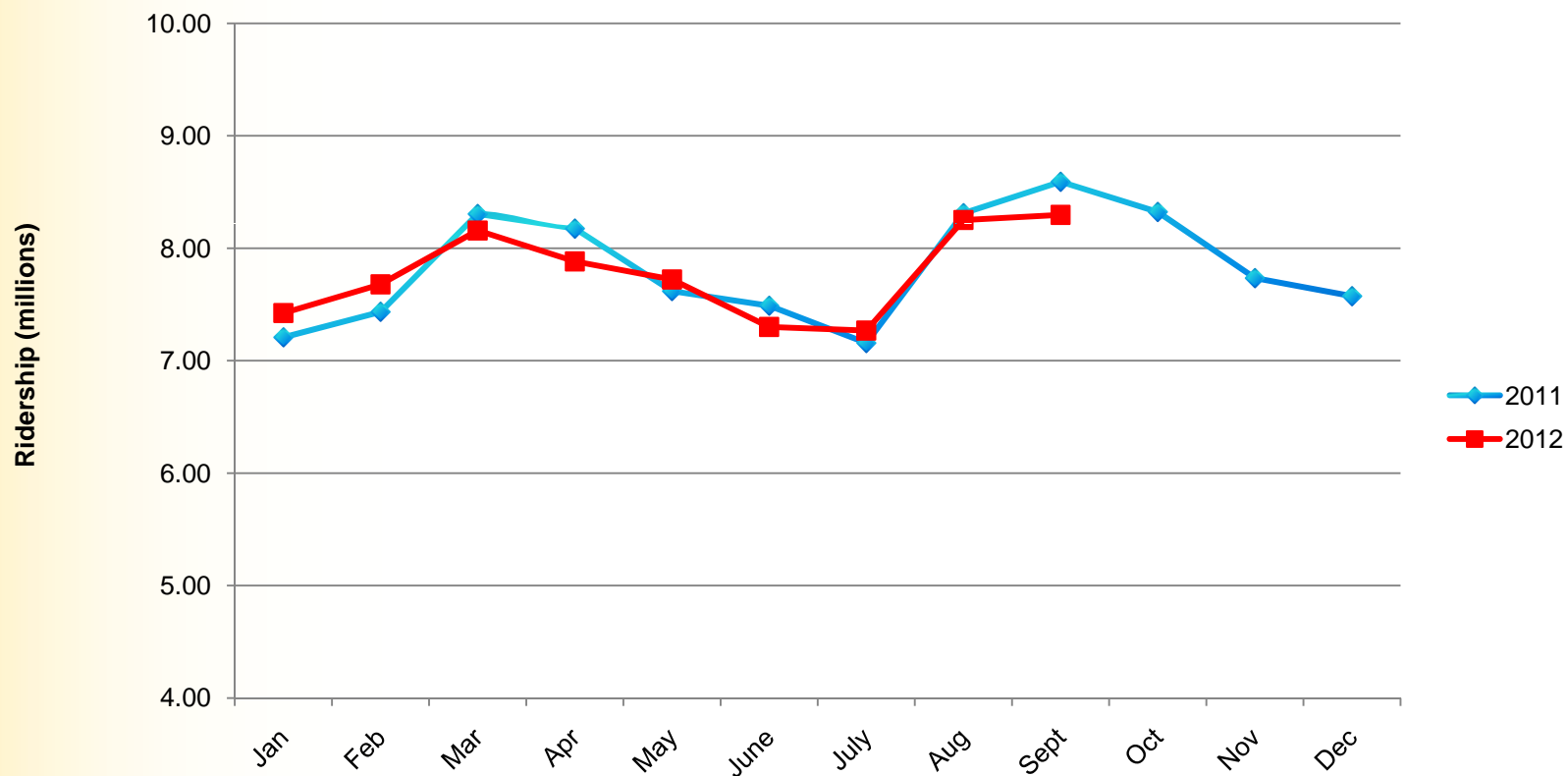


* Dial-a-Ride, Metro Mobility, Vanpool

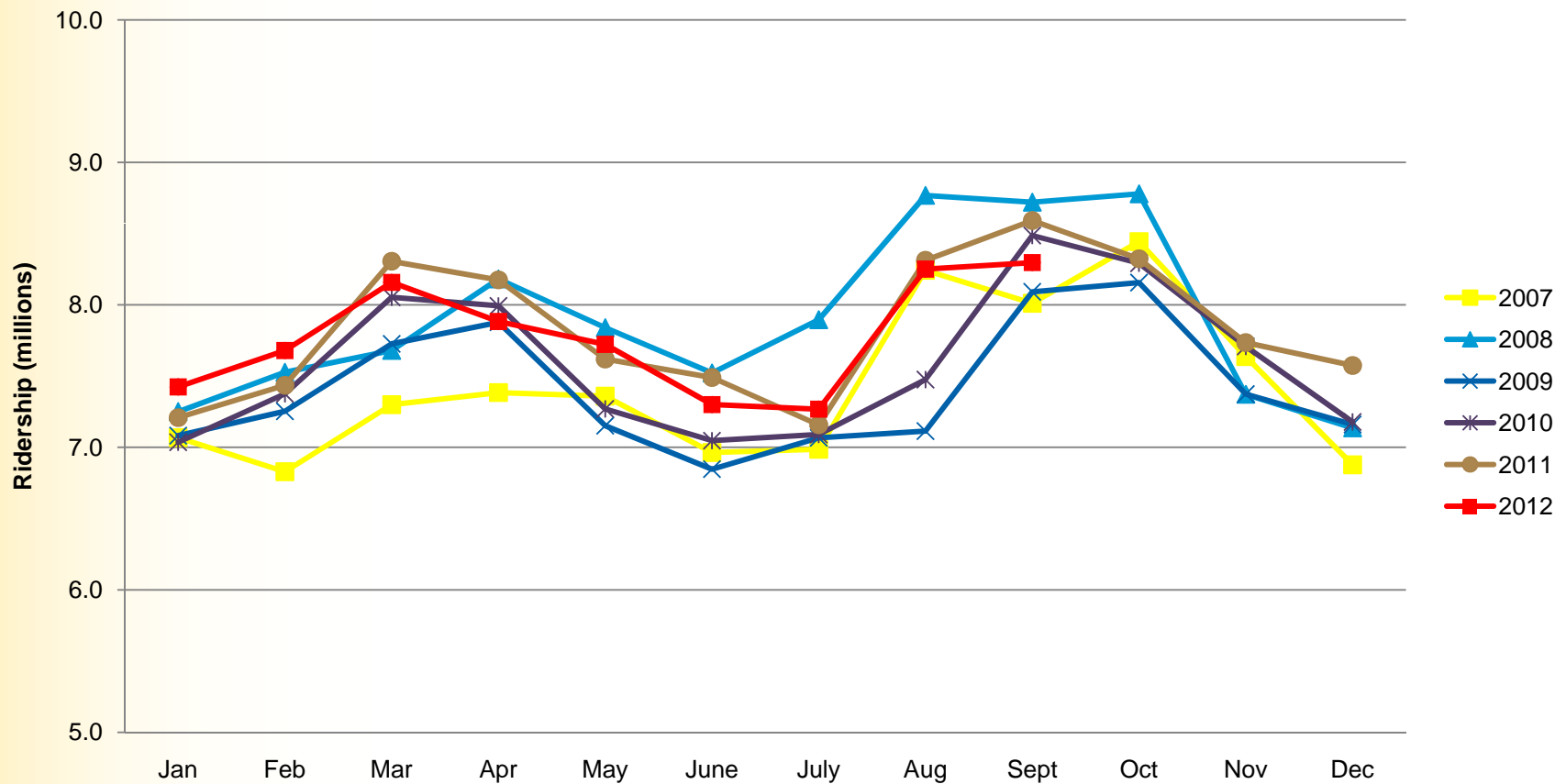
Third Quarter 2012 to 2011 Comparison by Service Type

<u>Type of Service</u>	<u>% Change</u>
Rail	-3.3%
Express Bus	-4.2%
Local Bus	-0.1%
Dial-a-Ride	-9.9%
Vanpool	2.0%
Metro Mobility	<u>8.1%</u>
Total	-1.0%

2012 - 2011 Monthly Comparison



2012-2007 Monthly Comparison



2012 Third Quarter Regional Ridership Report

Questions