

Transit Easement Interagency Agreement Southdale Mall, City of Edina

Metropolitan Council Transportation Committee
November 26, 2012

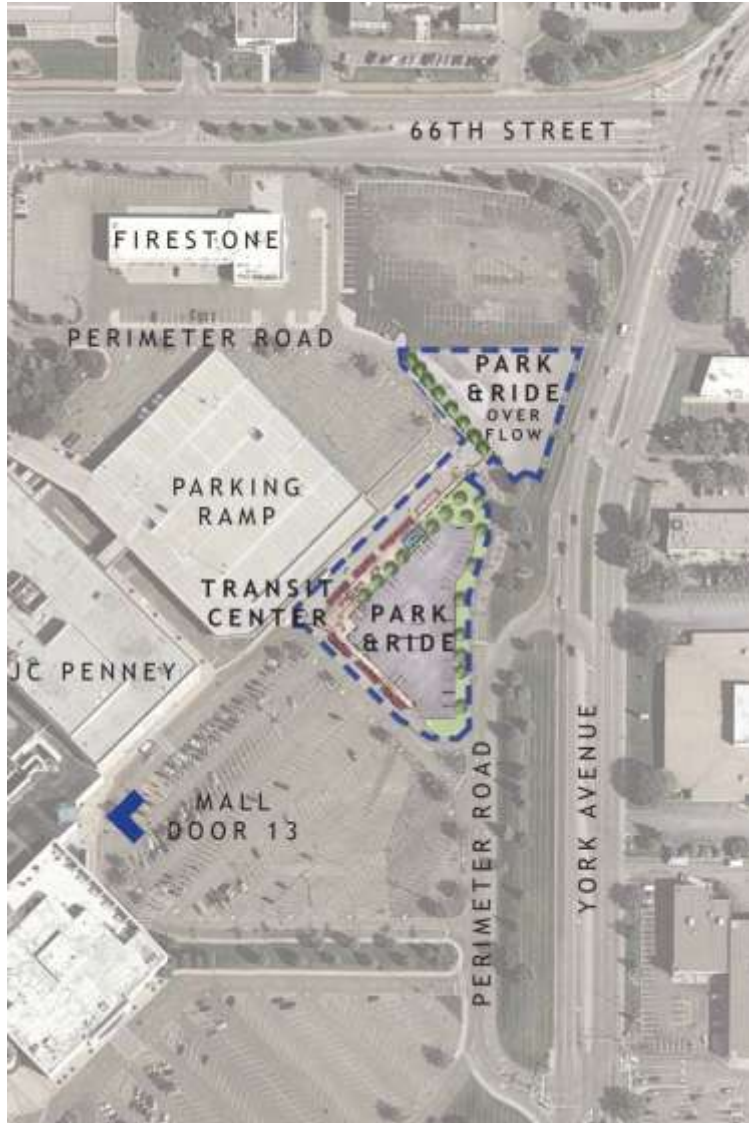
Maurice Roers - Metro Transit Engineering & Facilities 612-349-7684
George Serumgard - Metro Transit Engineering & Facilities 612-349-7697

Current Southdale Transit Service

- Transit service has operated since 1965 opening
- Seven routes with 800+ daily boardings
- Park-and-ride with 102 vehicle capacity



Southdale Mall Tax Increment Finance Agreement



Terms of easement

- Dedicated area for transit center and park-and-ride
- Permanent until Southdale ceases to operate as a Mall
- Capacity which accommodates our future service
- No cost to Metro Transit apart from \$6K annual maintenance fee and capital upgrades
- The Mall retains the right to relocate easement bounded by certain criteria

Proposed Transit Center

- Capacity for seven buses and 134 park & ride vehicles
- Driver restroom
- Shelters with heat, real-times signs and security cameras
- Improved stormwater detention via bioswales
- Solar panels with 4 electric vehicle charging stations



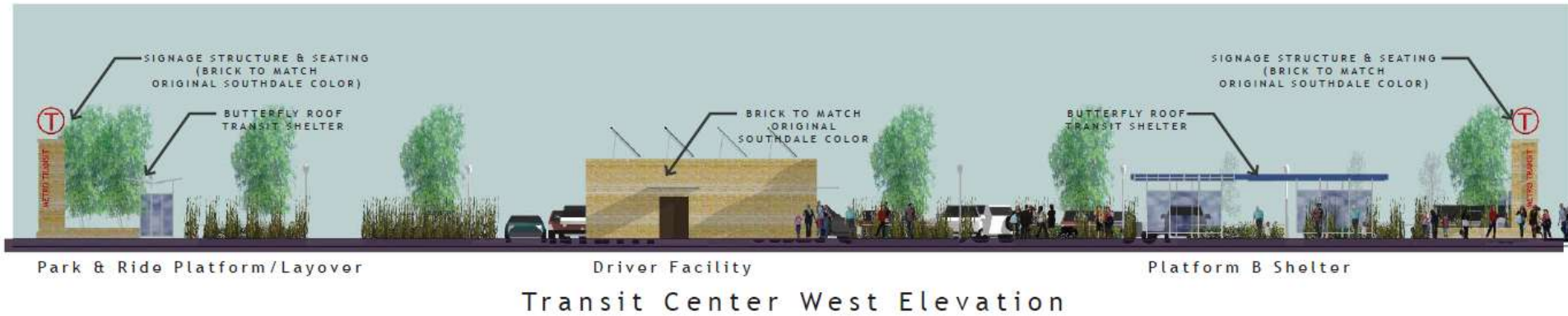
Transit Center Illustrative Perspective

Proposed Transit Center



Transit Center Illustrative Perspective
VIEW LOOKING NORTHEAST

Proposed Transit Center



- Construction to be complete in September 2013
- \$850,000 budget provided for in Project 62218

Transit Easement Interagency Agreement Southdale Mall, City of Edina

Proposed Action

“That the Metropolitan Council authorize the Regional Administrator to enter into an interagency agreement with the City of Edina for a lease that would enable the construction and operation of a transit center and park-and-ride at Southdale Mall.”