

T Transportation Committee
Meeting date: August 27, 2012,
For the Council Meeting of September 12, 2012

ADVISORY INFORMATION

Date: August 20, 2012
Subject: Controlled Access Approval for construction of an interchange at TH 169 and CH 69 in Shakopee, Scott County. Review #21018-1
District(s), Member(s): District 4, Gary Van Eyll
Policy/Legal Reference: Mn. Statute 473.166
Staff Prepared/Presented: Arlene McCarthy, Director, MTS 651-602-1754
Amy Vennewitz, Deputy director, Finance and Planning, MTS, 651-602-1508
Connie Kozlak, Manager, Transportation Planning and Programming 651-602-1720
Ann Braden, Senior Transportation Planner, MTS, 651-602-1705
Division/Department: Metropolitan Transportation Services

Proposed Action

That the Metropolitan Council approve MnDOT's request to build an interchange at TH 169 and County Highway (CH) 69 in Shakopee, conditional upon any significant changes in the design of the proposed project being subject to further review and approval by the Metropolitan Council prior to construction.

Background

Minnesota state law (MS. 473.166) requires that the Council approve any controlled access highway in the metropolitan area before construction or right-of-way acquisition begins. This is to ensure that proposed highway projects are consistent with regional policies and plans.

As shown on the attached figure, the interchange will be a folded diamond design with a loop in the southeast quadrant. A new CH 69 overpass bridge will be constructed over TH 169, and CH 69 will be reconstructed as a four-lane divided roadway just north of Colburn Drive to just north of 115th Street. The project also includes a stormwater pond and filtration basin, a noise barrier and a multi-use trail. Construction of the interchange is expected to begin in 2013.

Rationale

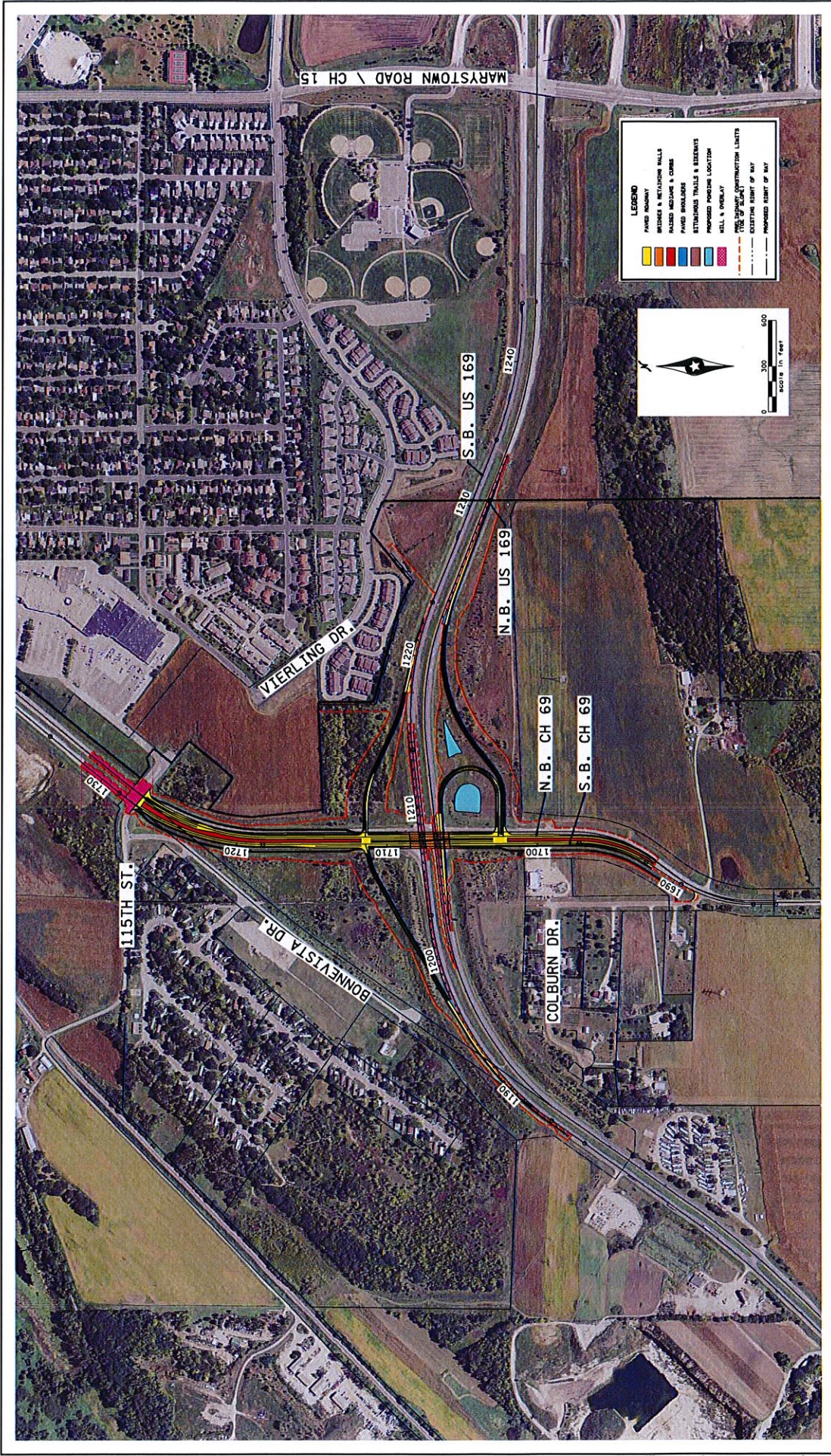
The project addresses future capacity and safety issues at the current TH 169/CH 69 intersection and will maintain adequate operations and improved safety for vehicles and pedestrians/bicyclists. The project supports interregional corridor objectives, land use and economic development goals and is consistent with the regional Transportation Policy Plan. Construction of the interchange is included in the 2012-2015 TIP.

Funding

The estimated total project cost is \$16,810,000 and is funded with a combination of state, county and city monies.

Known Support / Opposition

There is no known opposition to the project.



Proposed Improvements
 US 169 / CH 69 Interchange Project
 SP #7005-97
 Scott County, Minnesota