

SOUTHWEST

Green Line LRT Extension



Transportation Committee Meeting

June 11, 2012

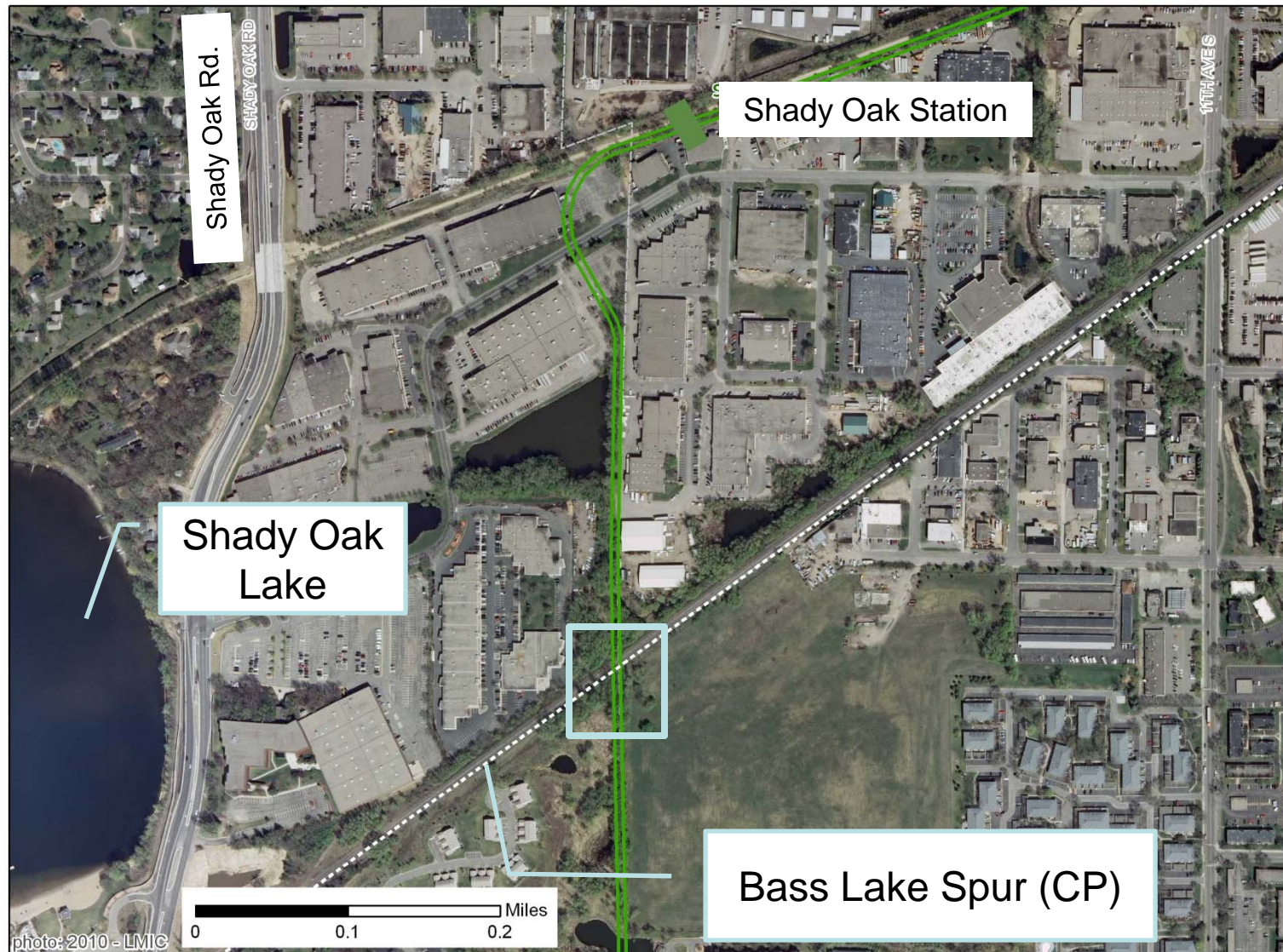


EDEN PRAIRIE | MINNETONKA | EDINA | HOPKINS | ST. LOUIS PARK | MINNEAPOLIS

Memoranda of Understanding with CP and BNSF Railways



LRT Over Freight Rail: Hopkins

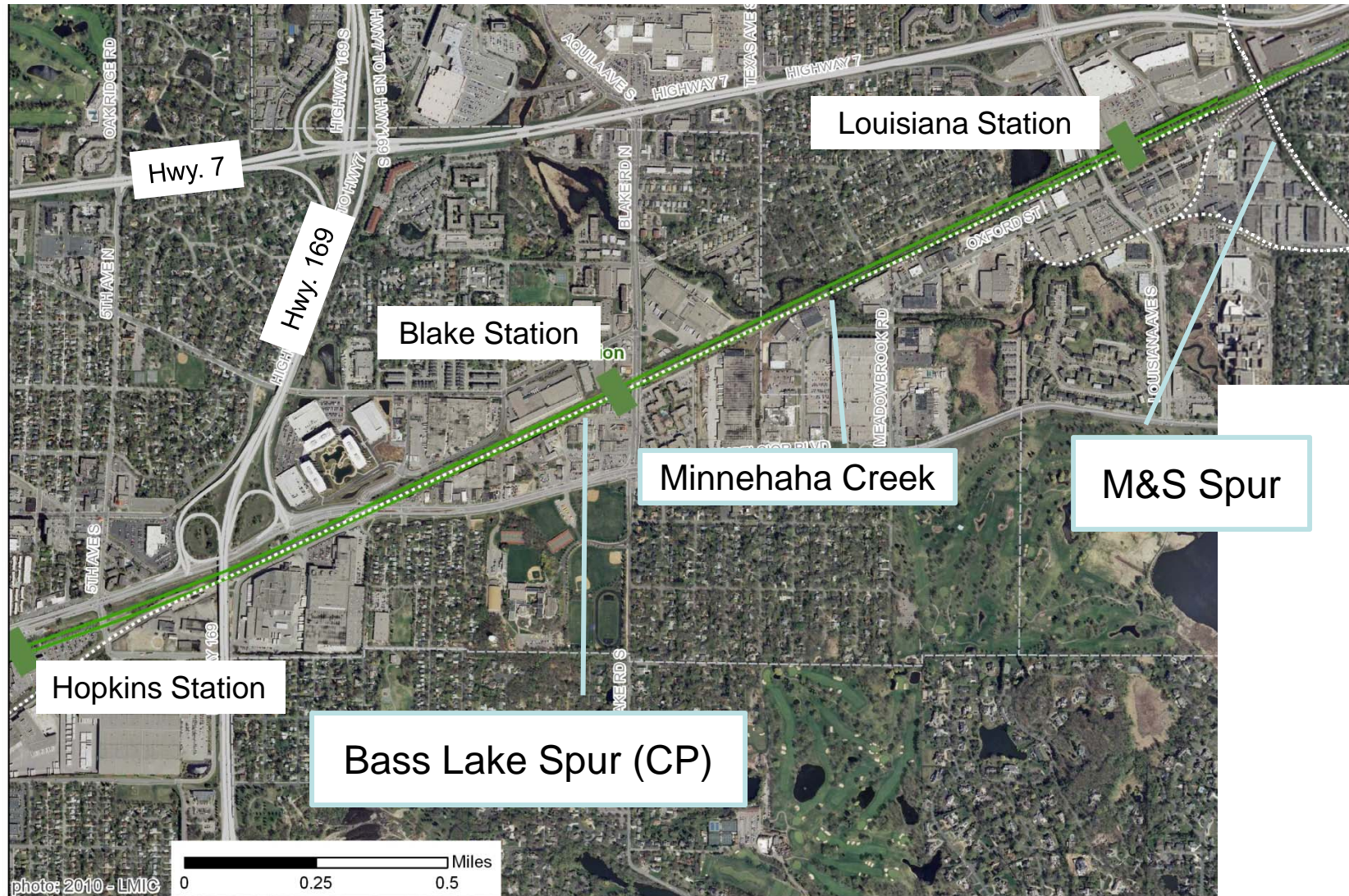


LRT Over Freight Rail: Hopkins

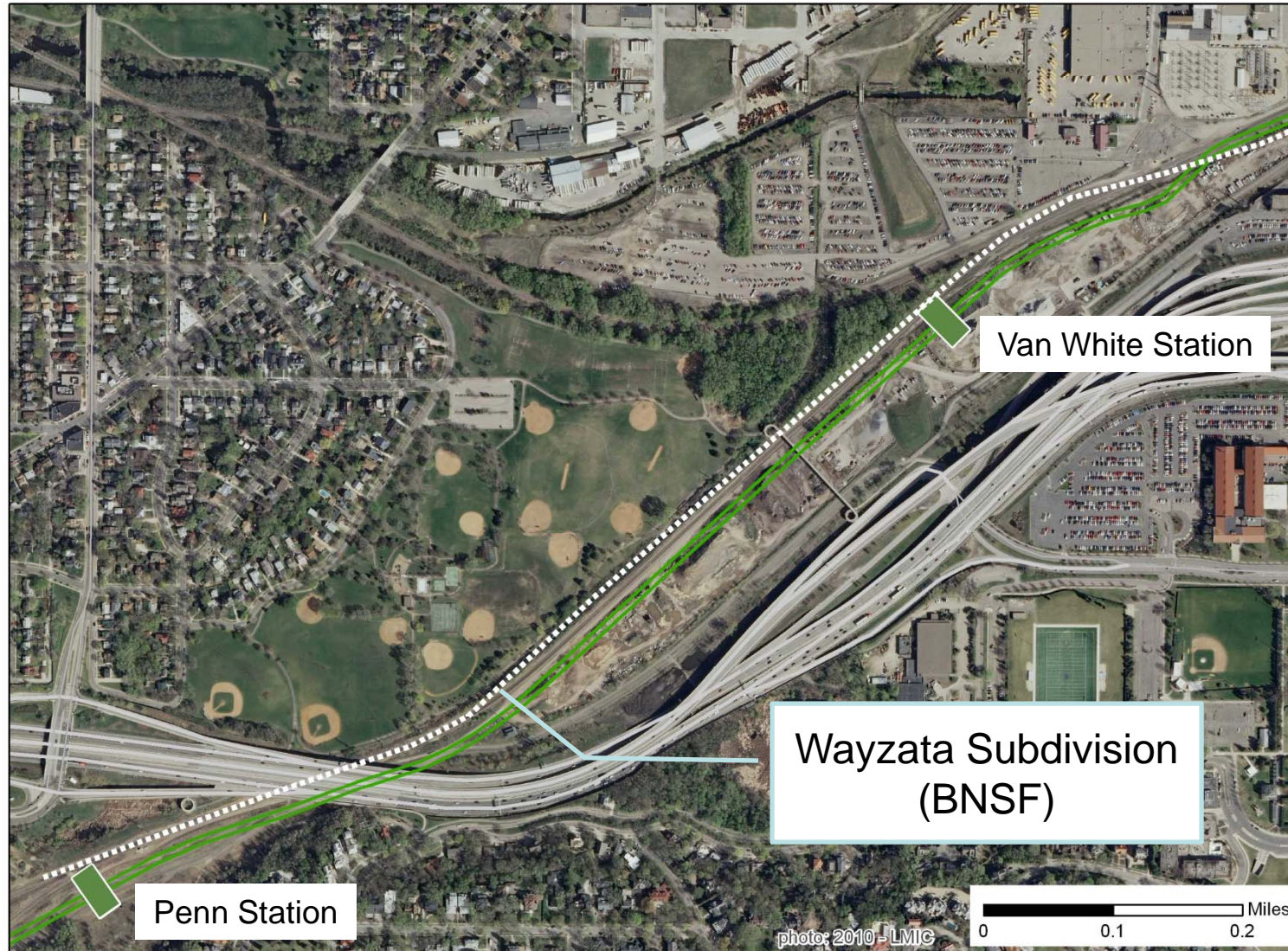


Bass Lake Spur (CP)

Freight Rail Parallel to LRT

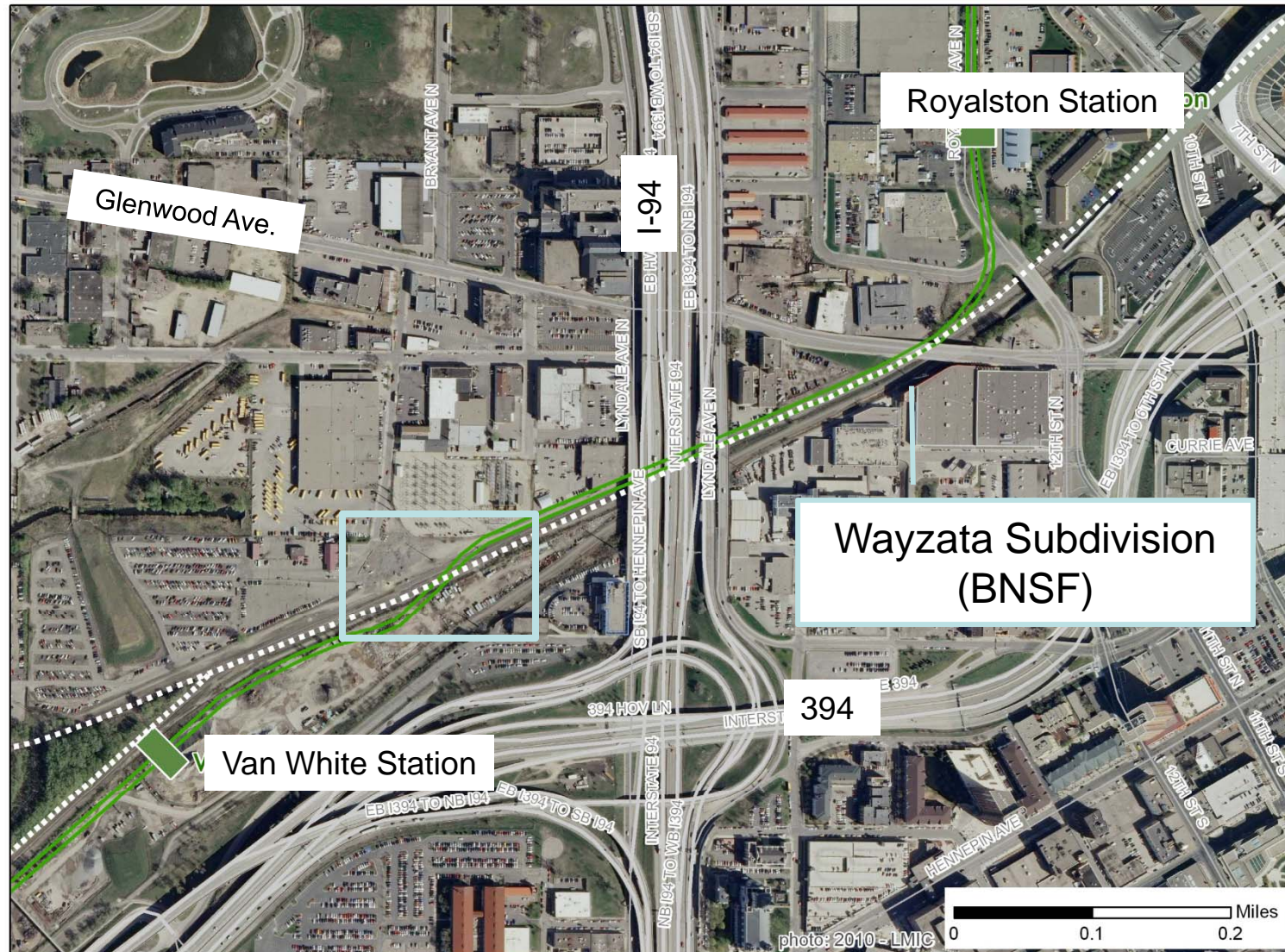


Freight Rail Parallel to LRT: Minneapolis



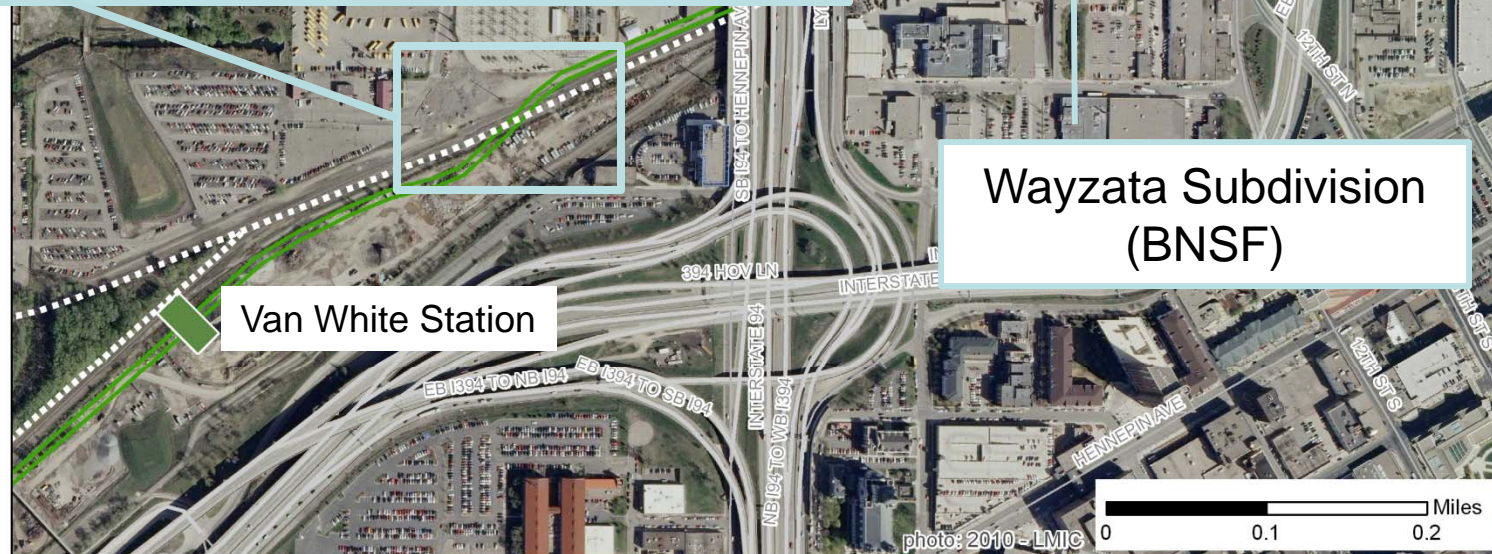
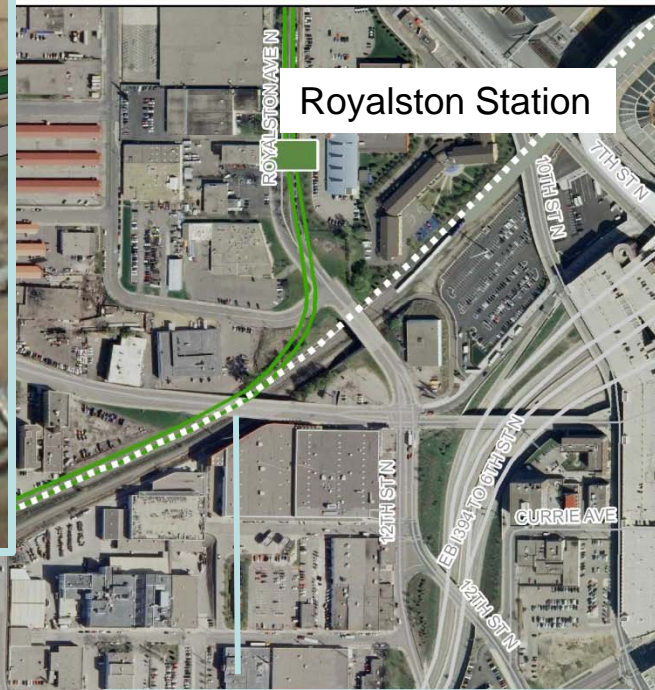


Freight Rail Under LRT: Minneapolis





Freight Rail Under LRT: Minneapolis





Relocation vs. Co-location Elements

Relocation:

- Connection between Bass Lake Spur and MN&S Spur
- Connection between MN&S Spur and Wayzata Subdivision
- Upgraded track on MN&S Spur
- 11,000-foot siding on Wayzata Subdivision

Co-location:

- LRT bridge over Bass Lake Spur between Louisiana and Wooddale Stations
- Reconstruction of Kenilworth Corridor track
- Additional property acquisition NE of West Lake Station



MOUs with CP and BNSF

- Legal basis and project description
- Freight Rail and Council roles & responsibilities
- Freight Rail and Council tasks during design, construction & operation
- Federal and state conditions
- Terms and conditions
- Preliminary Engineering roadmap
- Other (related documents, milestones, maps, etc.)



Recommendation

That the Metropolitan Council authorize the Regional Administrator to negotiate and execute Memoranda of Understanding (MOUs) with Canadian Pacific (CP) and BNSF Railways for the Southwest Light Rail Transit (SWLRT) Project.