

**Transportation Advisory Board**  
of the Metropolitan Council of the Twin Cities

---

**ACTION TRANSMITTAL**

No. 2012-03

**DATE:** February 9, 2012  
**TO:** Transportation Advisory Board  
**FROM:** Technical Advisory Committee  
**SUBJECT:** Scope change Request for Carver County SP#101-090-004: Southwest Regional Trail Connection to Change the Project Termini

**MOTION:** That the TAB approve a scope change for Carver County SP#101-090-004: Southwest Regional Trail Connection to Change the Project Termini shifting the paved trail portion 800 feet to the east.

**BACKGROUND AND PURPOSE OF ACTION:** The TAB awarded Transportation Enhancements to this project in the 2009 regional solicitation. The project's western terminus extends beyond a more logical endpoint at a local trail system in a city park. The project sponsor would like to move the entire project 800 feet to the east so the western termini connects to the trail system in the city park terminates at the park. The total length of the trail project remains the same in the revised scope. The scope change does not require a formal TIP amendment. Additional background information is attached.

**RELATIONSHIP TO REGIONAL POLICY:** Projects that receive funding through the regional solicitation process are subject to regionally adopted scope change policy. The purpose of this policy is to ensure that the project is designed and constructed according to the plans and intent described in the original application. Additionally, federal rules require that any federally funded project scope must go through a formal review and TIP amendment process if the project description or total project cost change substantially. The scope change policy and process allows project sponsors to make adjustments to their project as needed while still providing substantially the same benefits described in the original application.

The regionally adopted scope change policy is attached.

---

**ROUTING**

<b>TO</b>	<b>ACTION REQUESTED</b>	<b>DATE COMPLETED</b>
TAC Funding & Programming Committee	Review & Recommend	January 19, 2012
Technical Advisory Committee	Review & Recommend	February 1, 2012
TAB Programming Committee	Review & Recommend	
Transportation Advisory Board	Review & Approve	



## CARVER COUNTY PARKS

Department of Public Works

11360 Highway 212, Suite 2  
Cologne, Minnesota 55322  
Phone (952) 466-5250 Fax (952) 466-5223  
[www.co.carver.mn.us/parks](http://www.co.carver.mn.us/parks)

11360 Hwy. 212, Suite 1  
Cologne, Minnesota 55322  
Phone (952) 466-5200  
Fax (952) 466-5223

January 9, 2012

Karl Keel  
TAC Funding and Programming Committee Chair  
Metropolitan Council  
390 North Robert Street  
St. Paul, MN 55101

Re: Carver County Southwest Regional Trail Connection  
S.P. 010-090-004  
Scope Change Request – TAC Funding & Programming Committee

Dear Mr. Keel:

Following consultation with Colleen Van Wagner at Mn/DOT Metro State Aid and pursuant to the adopted process to evaluate scope change requests for regionally-selected projects, Carver County is pleased to present the following information:

### **Type of Scope Change Requested**

#### **Change in termini for Project Area 2.**

- No change to alignment
- No change to connections
- No change to Project Area 1

#### *Original Termini as Identified in Federal Transportation Enhancement Fund Application*

From: Trail approximately 2,000 feet east of TH 5  
To: Rail bed approximately 1,600 feet west of TH 5

#### *Requested Termini in Scope Change*

From: Trail approximately 2,800 feet east of TH 5  
To: Rail bed approximately 800 feet west of TH 5

The requested termini change effectively moves both the east and west termini to the east approximately 800 feet while maintaining the original alignment and original segment length for the improvement (see attached illustration *Segment 2 – Lake Minnetonka LRT Regional Trail Connection* dated December 21, 2011).

The area reviewed for Social, Economic, and Environmental impacts included in the Project Memorandum does fully encompass the Project Area 2 with the requested new termini (see attached Figure iv).

**Project Description**

The project involves constructing two segments of the Southwest Regional Trail Connection providing facilities for pedestrians and bicycles. The two segments – hereafter referred to as Project Area 1 and Project Area 2 – totaling approximately 1 mile in length and consisting of two non-contiguous portions of the planned Southwest Regional Trail Connection. The Southwest Regional Trail Connection will connect the Minnesota River Bluffs LRT Regional Trail with the Lake Minnetonka LRT Regional Trail through the communities of Chaska and Victoria.

***Project Area 1***

The first segment to be constructed lies within the City of Chaska is located in a fairly undeveloped, rural area reflecting the city's zoning – open development, industrial and open space. There is minimal development, including a pipe yard and propane tank sales, in the project area. Approximately 1/3 mile of new alignment pedestrian/bicycle trail along County Road 61 (Old US 212) will be constructed, connecting the existing Southwest Regional Trail to the existing Minnesota River Bluffs LRT Regional Trail. Construction of this segment of trail will fill a critical gap in the regional trail system and dramatically improve pedestrian and bicycle access to both trails. Currently, the Southwest Regional Trail terminates at the County Road 61 and CSAH 10 intersection, and the Minnesota River Bluffs LRT Regional Trail terminates a 1/3 of mile to the east at CSAH 10.

***Project Area 2***

The second segment to be constructed in the City of Victoria is located in the city's downtown as well as a residential area to the west of the city. Approximately 2/3 mile of pedestrian/bicycle trail will be constructed, toward the planned connection of the Southwest Regional Trail Connection in the City of Victoria to the existing Lake Minnetonka LRT Regional Trail at the Carver Park Reserve, and will extend a segment of the Lake Minnetonka LRT Regional Trail to an existing rail bed that is planned to house a future segment of the Southwest Regional Trail Connection. The trail will connect south out of the existing railroad right-of-way to connect to Salter's Park and 81st Street.

Completing these two key segments within the Southwest Regional Trail Connection corridor supports the County's vision of developing a complete regional loop. When completed, the Southwest Regional Trail Connection will fill a critical gap in the current and future regional system. The trail connection will allow users to travel continuously through Carver County without ever leaving the designated regional trail system. Completion of these segments will bring the County closer to completing the Southwest Regional Trail Connection and fulfilling an unmet need in the development of the regional pedestrian and bicycle network.

The proposed project is supported by the Cities of Chaska, and Victoria, and Three Rivers Park District.

**Location Map**

See attached.

**Project Layouts (Project Area 2)**

See attached.

**Project Development Status/Schedule**

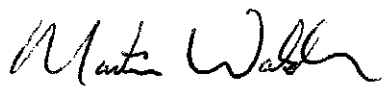
Site review, wetland Evaluation, preliminary design and right of way needs determination for both Project Area 1 and Project Area 2 have all been completed. A draft Project Memorandum is anticipated to be submitted to Mn/DOT Metro State Aid for review January 2012. Final Design, Right of Way Acquisition, and Construction Documents are anticipated to commence early 2012. Pending approvals and right of way acquisition, it is Carver County's intent to bid and construct the improvements in 2013. The project must be approved and bid by March 31, 2014 to comply with the funding sunset date.

**Estimate of Cost**

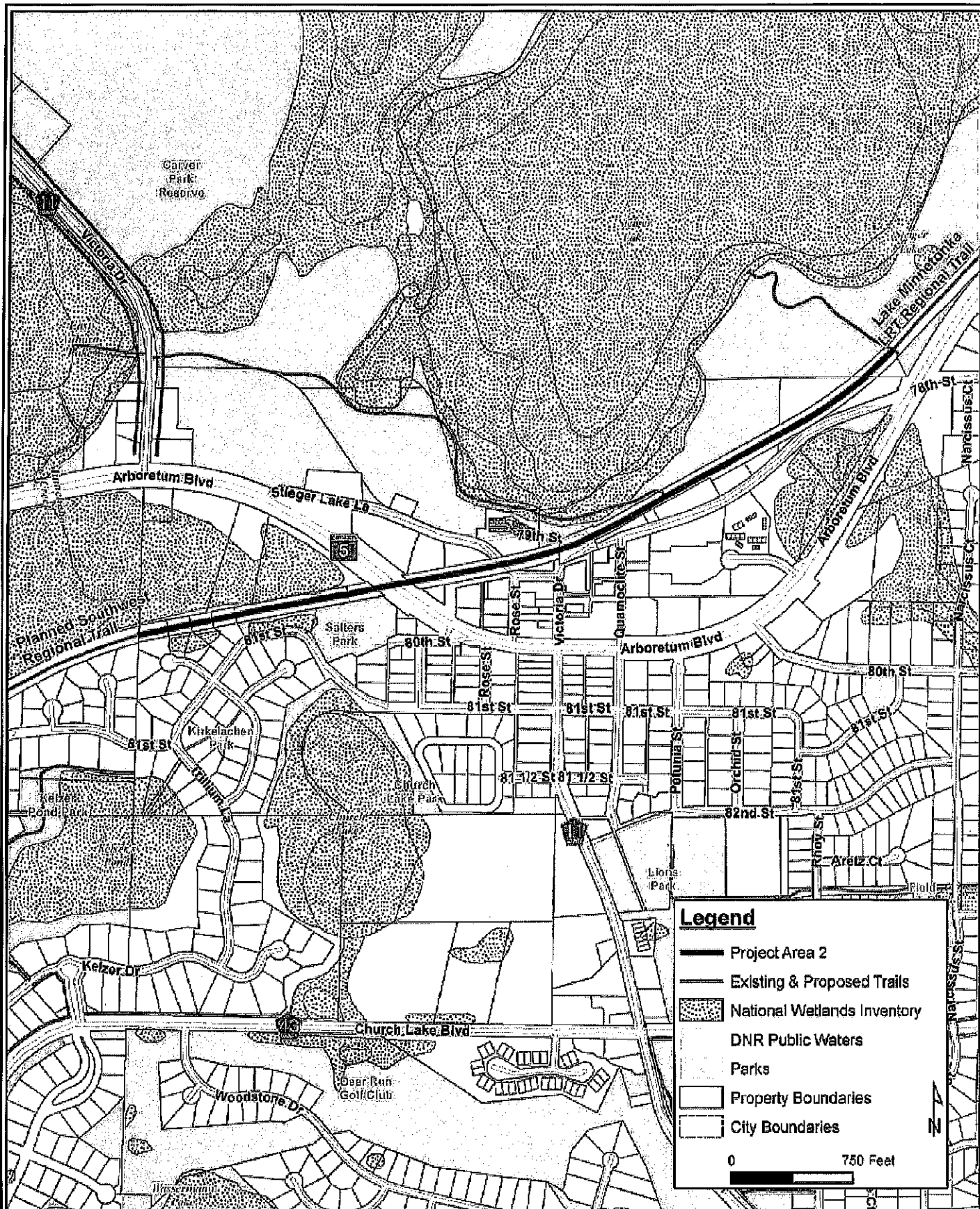
Trail Construction Costs (Overall):	\$556,716
Updated Estimate (Project Area 2 only):	\$287,929

Thank you for your consideration of the above information in your evaluation of this scope change request. Should you need additional information please contact me at 952-466-5252.

Sincerely,

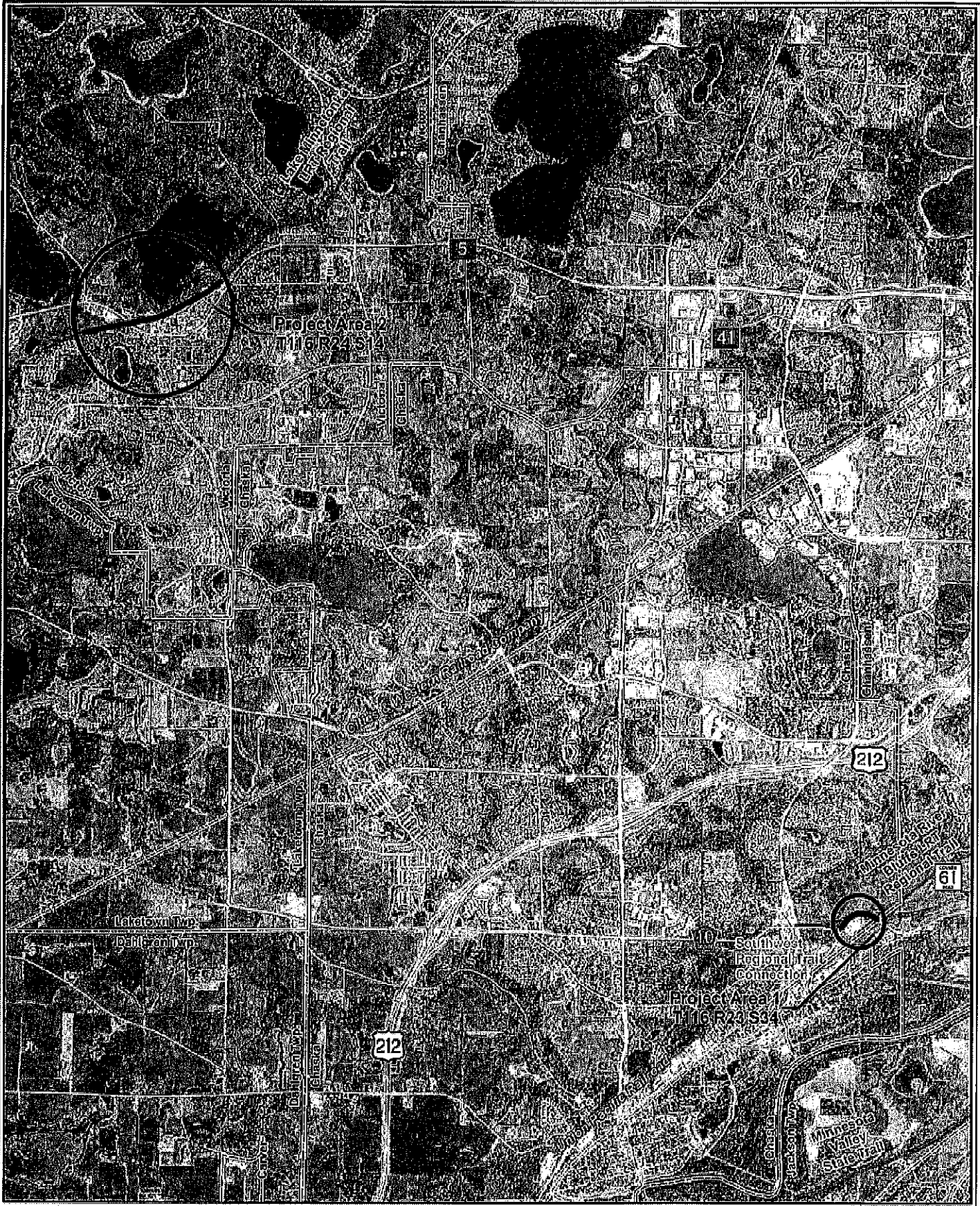


Martin Walsh  
Parks Director  
Carver County Parks



**Project Area 2**  
**Southwest Regional Trail Connection**  
**Transportation Enhancement - SP 010-090-004**  
**Carver County, MN**

Figure iv



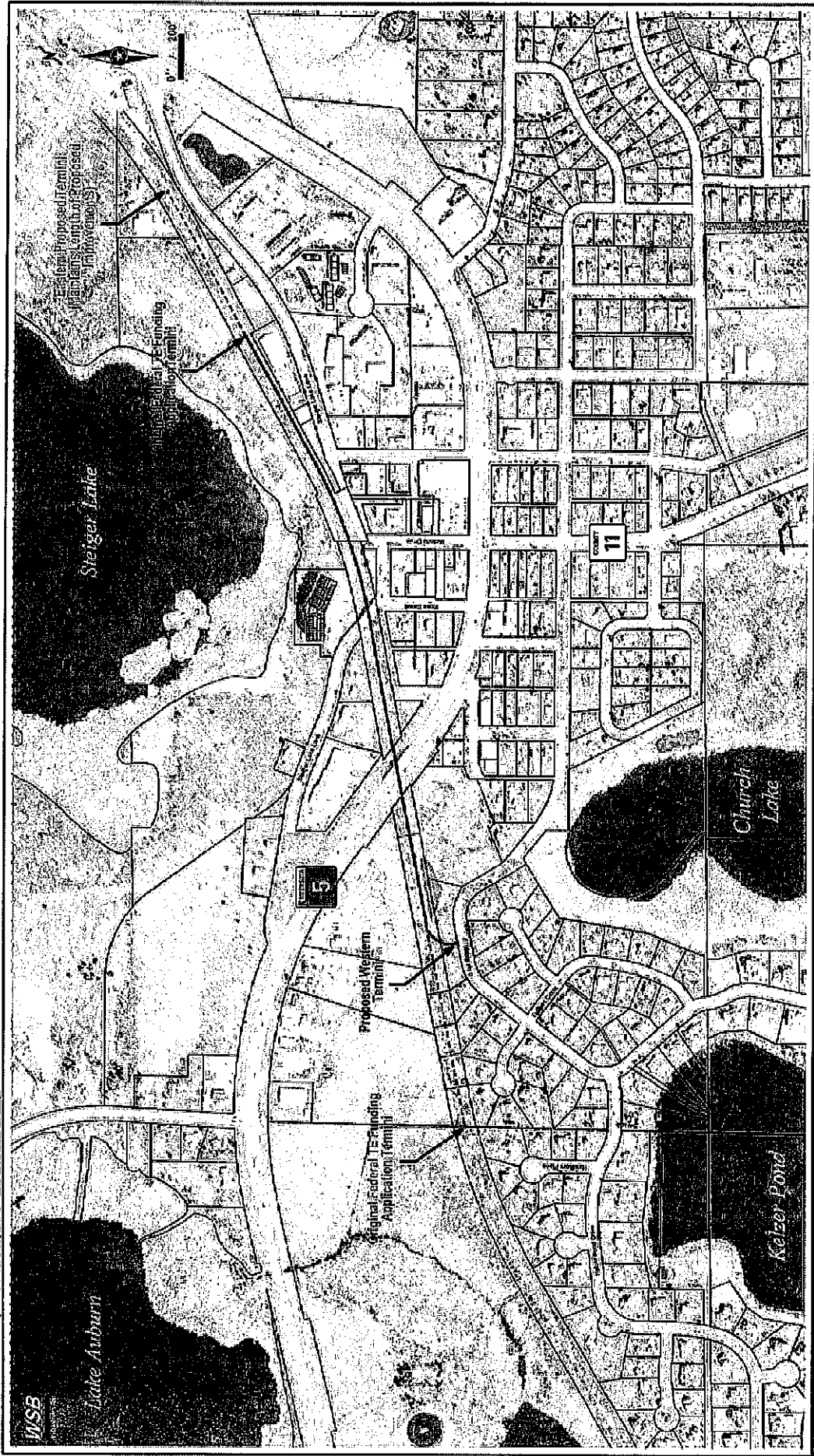
**Project Location Map**  
**Southwest Regional Trail Connection**  
**Transportation Enhancement - SP 010-090-004**  
**Carver County, MN**



**Figure ii**



Map Series: 85528  
Date: 12/21/2011  
Scale: 1" = 200'  
MSB  
Lake Auburn



**Southwest Regional Trail Connection**  
Carver County, Minnesota

**Segment 2 - Lake Minnetonka LRT Regional Trail Connection**

December 21, 2011