

# Central Corridor Light Rail Transit

Metropolitan Council – Committee of  
the Whole  
January 20, 2010



*Improving  
mobility*

*Easing  
congestion*

*Strengthening  
our communities*

# Today's Topics

- University of Minnesota update
- Project update
- 2010 project schedule look ahead



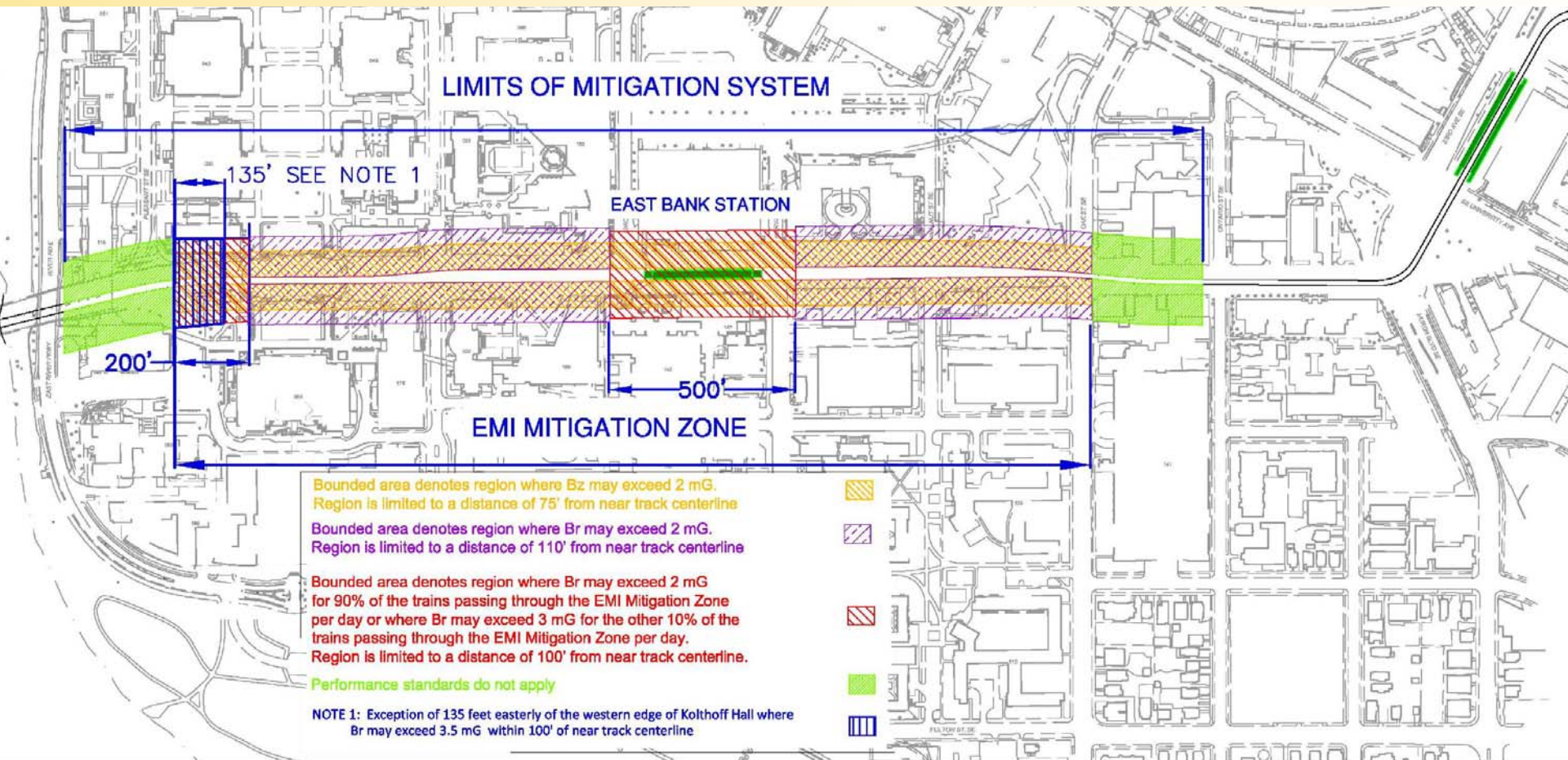
# Central Corridor Light Rail Transit



## University of Minnesota Update

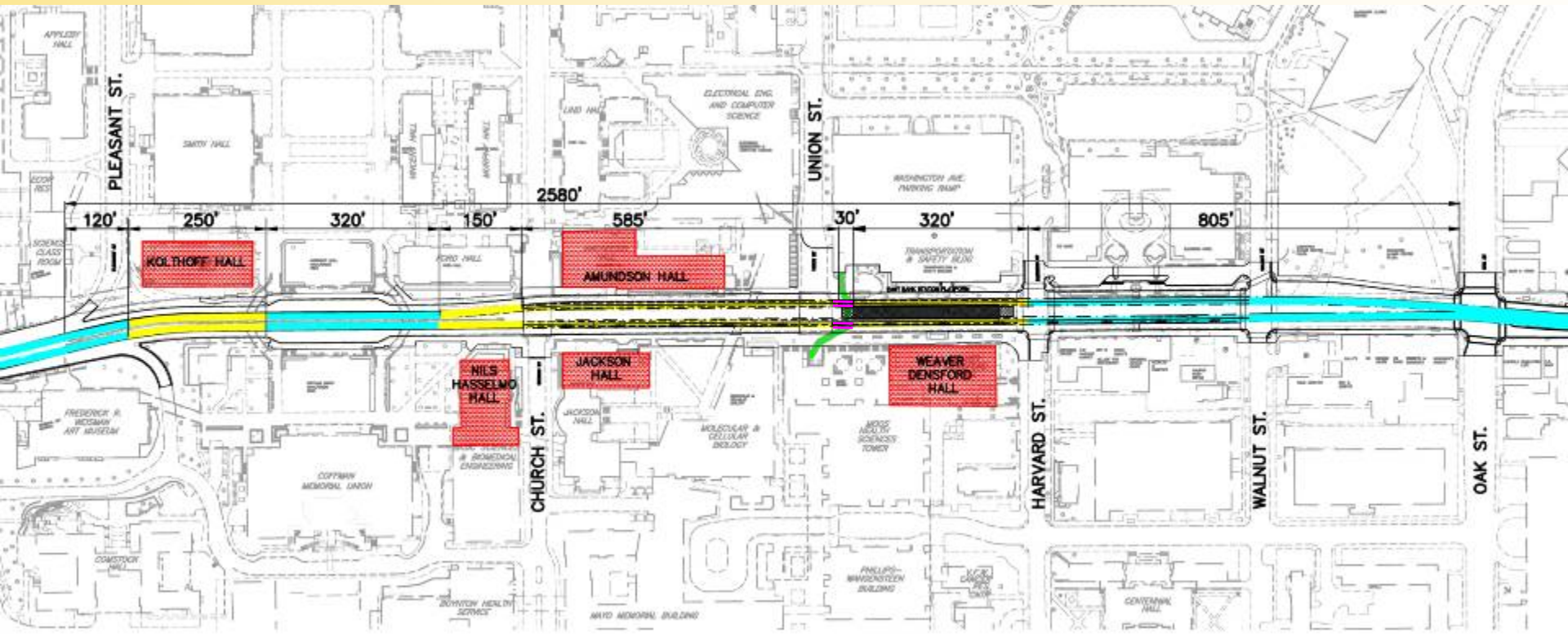
# EMI Performance Standard Limits

## Central Corridor Light Rail Transit



# Vibration Mitigation for Impacted Buildings

- Typical embedded track
- Floating Slab w/ rubber support pads
- Floating Slab on rubber mat
- LRT/Bus Joint Operation



# Central Corridor Light Rail Transit



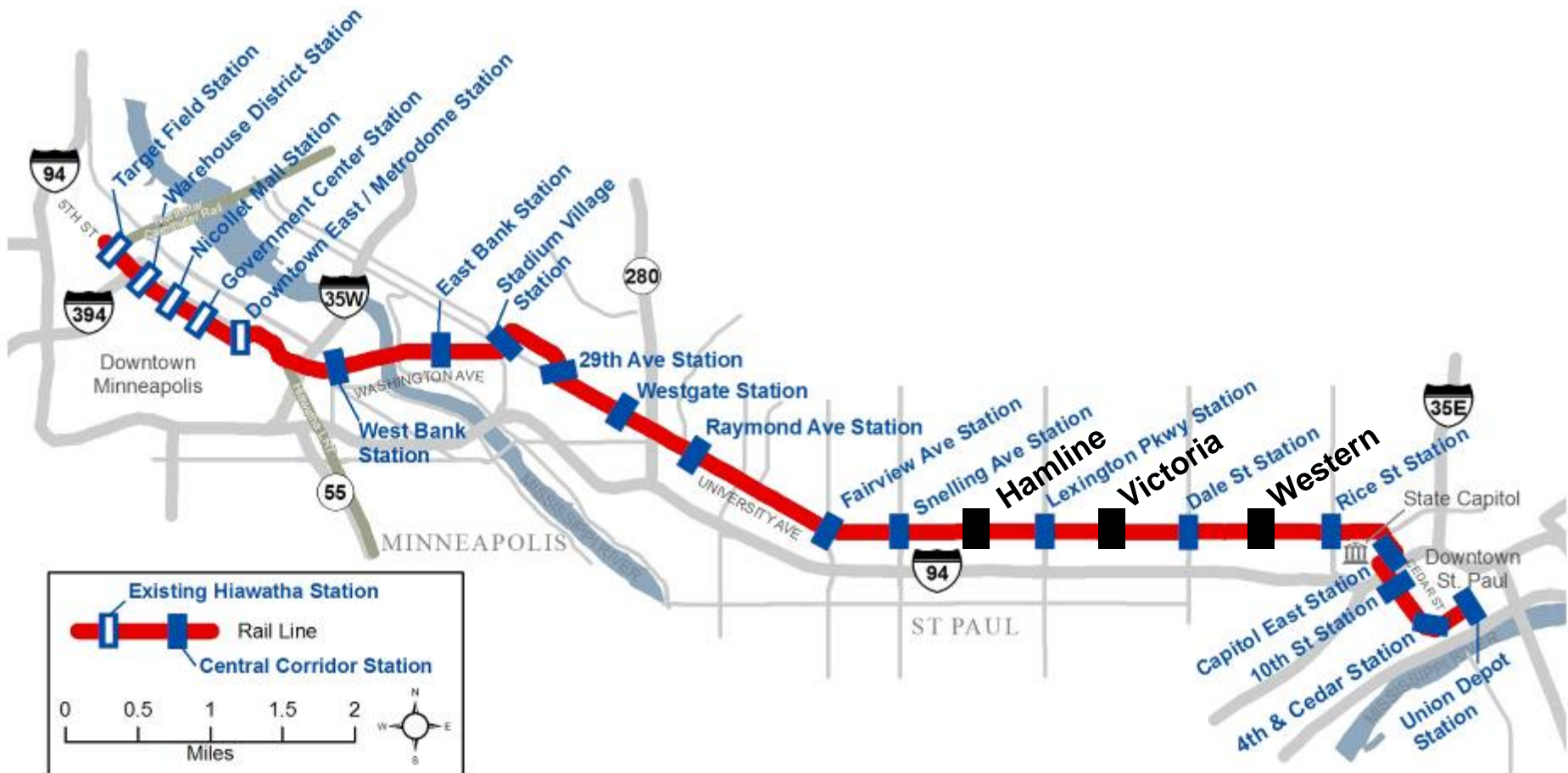
## Project Update

# FTA 2010 Project Rating

<b>Local Financial Commitment</b>	<b>Medium</b>
New Starts Share	Medium
Capital Plan	Medium
Operating Plan	Medium High
<b>Project Justification</b>	<b>Medium High</b>
Environmental Benefits	Medium
Mobility Improvements	Medium
Cost Effectiveness	Medium
Land Use	Medium High
<b>Overall Project Rating</b>	<b>Medium High</b>

# Central Corridor Light Rail Transit

# Potential Infill Station Locations





# Infill Stations NEPA Work



- ✓ Jan. 11 – EA NOA published
- Jan. 27 – Public hearings at Hallie Q Brown Community Center
  - 11 AM
  - 6 PM
- Feb. 10 – Comment period closes
- Feb. 19 – FTA issues FONSI

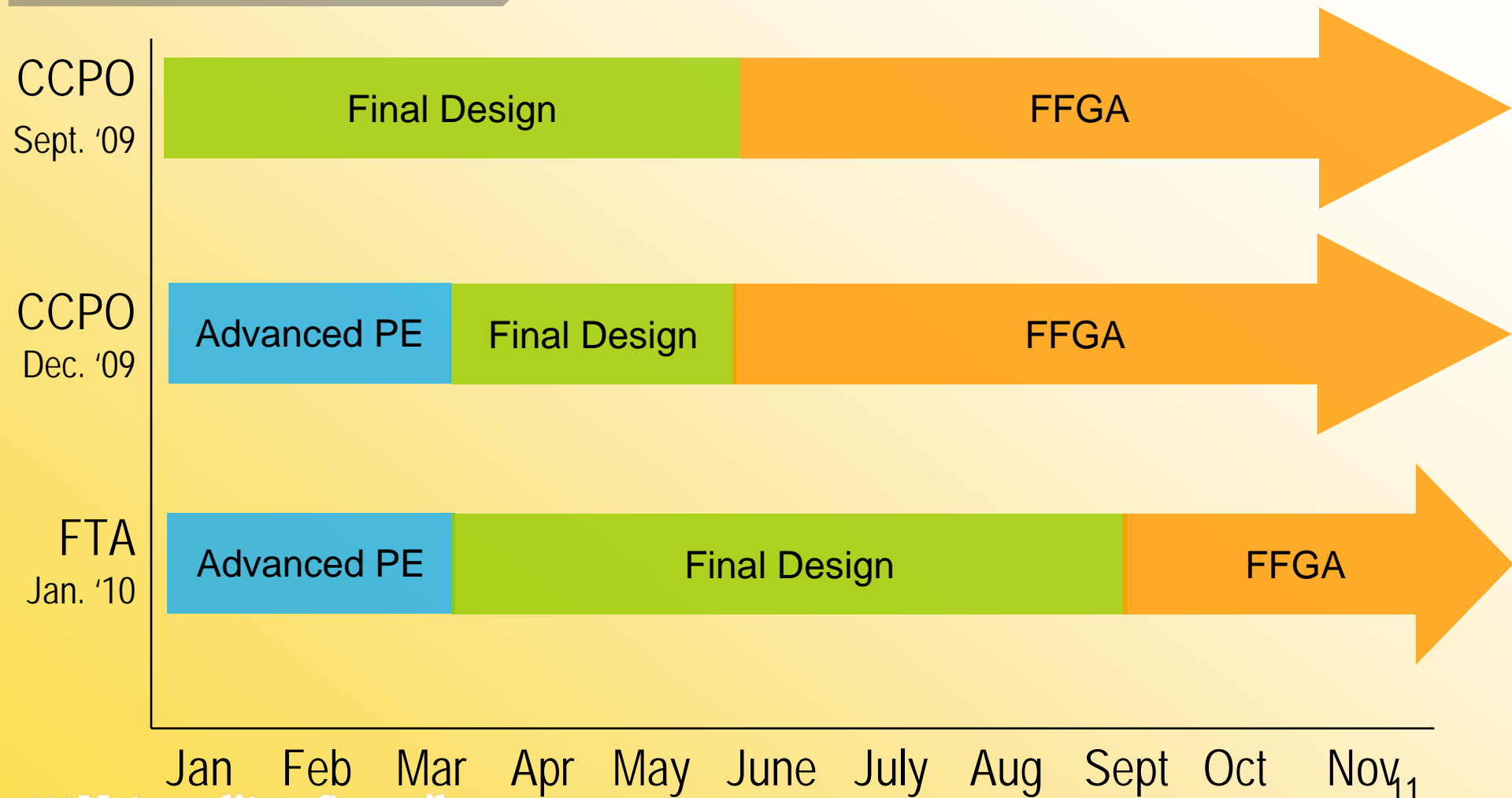
# Central Corridor Light Rail Transit



## 2010 Project Schedule Look Ahead

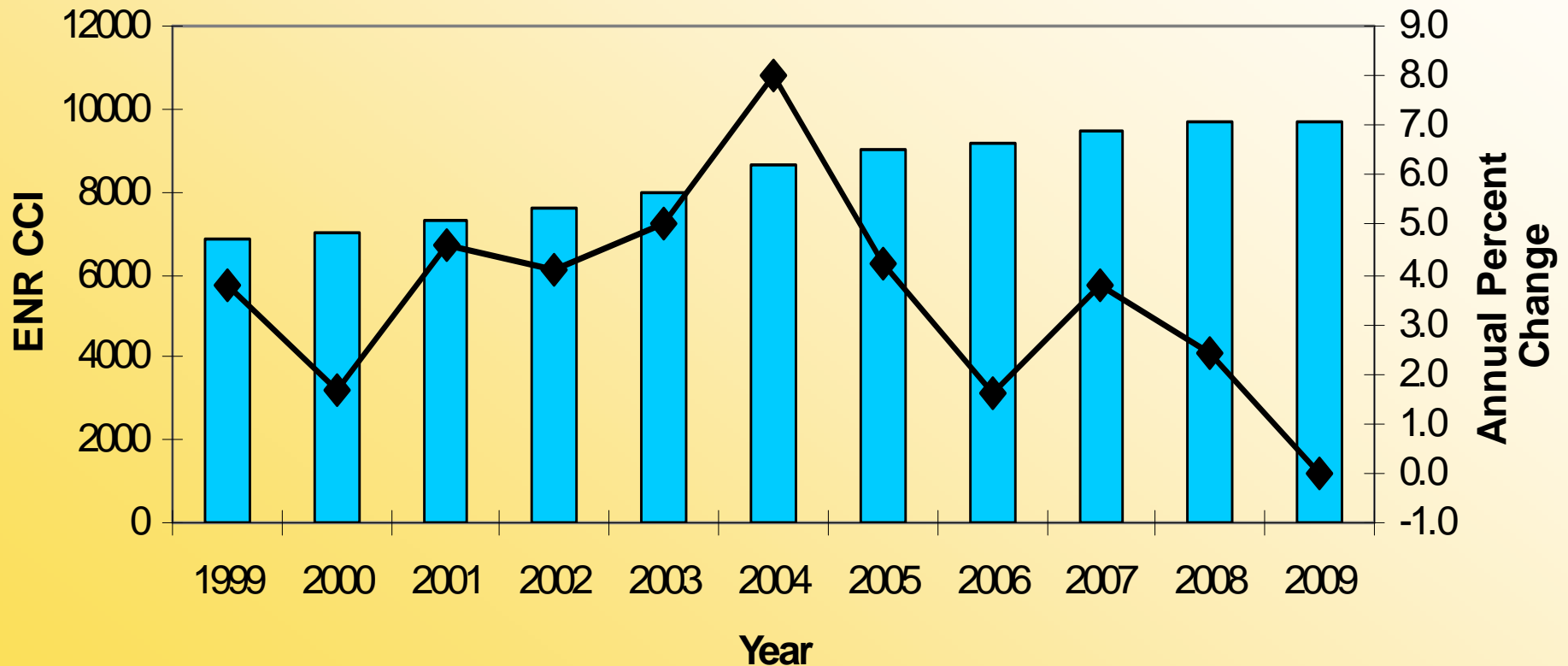
# Central Corridor Light Rail Transit

# 2010 Project Schedule



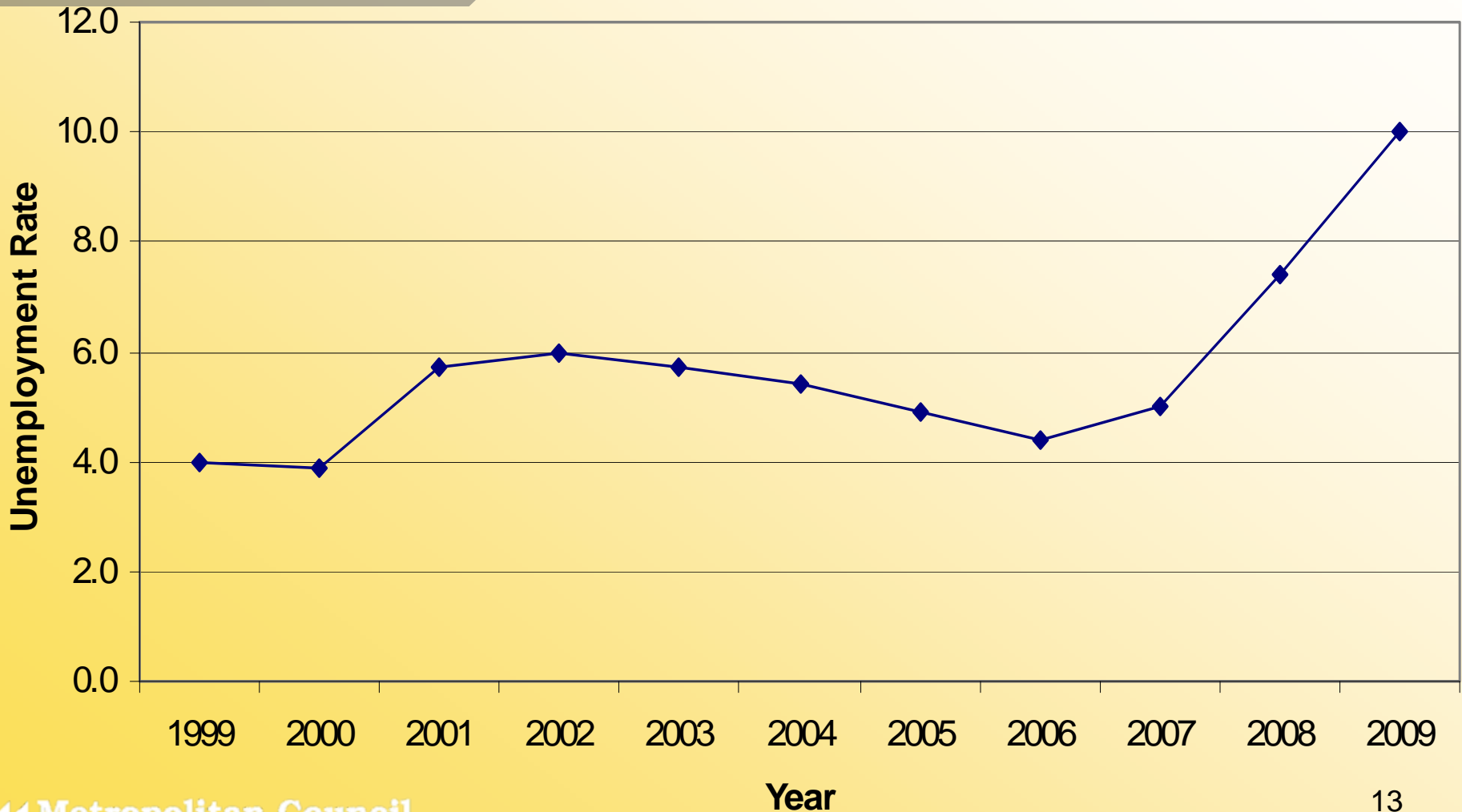
# ENR Construction Cost Index (Mpls 1999-2009)

ENR Construction Cost Index (CCI) - Minneapolis (1999 - 2009)



# National Unemployment 1999-2009

Central Corridor  
**Light Rail Transit**



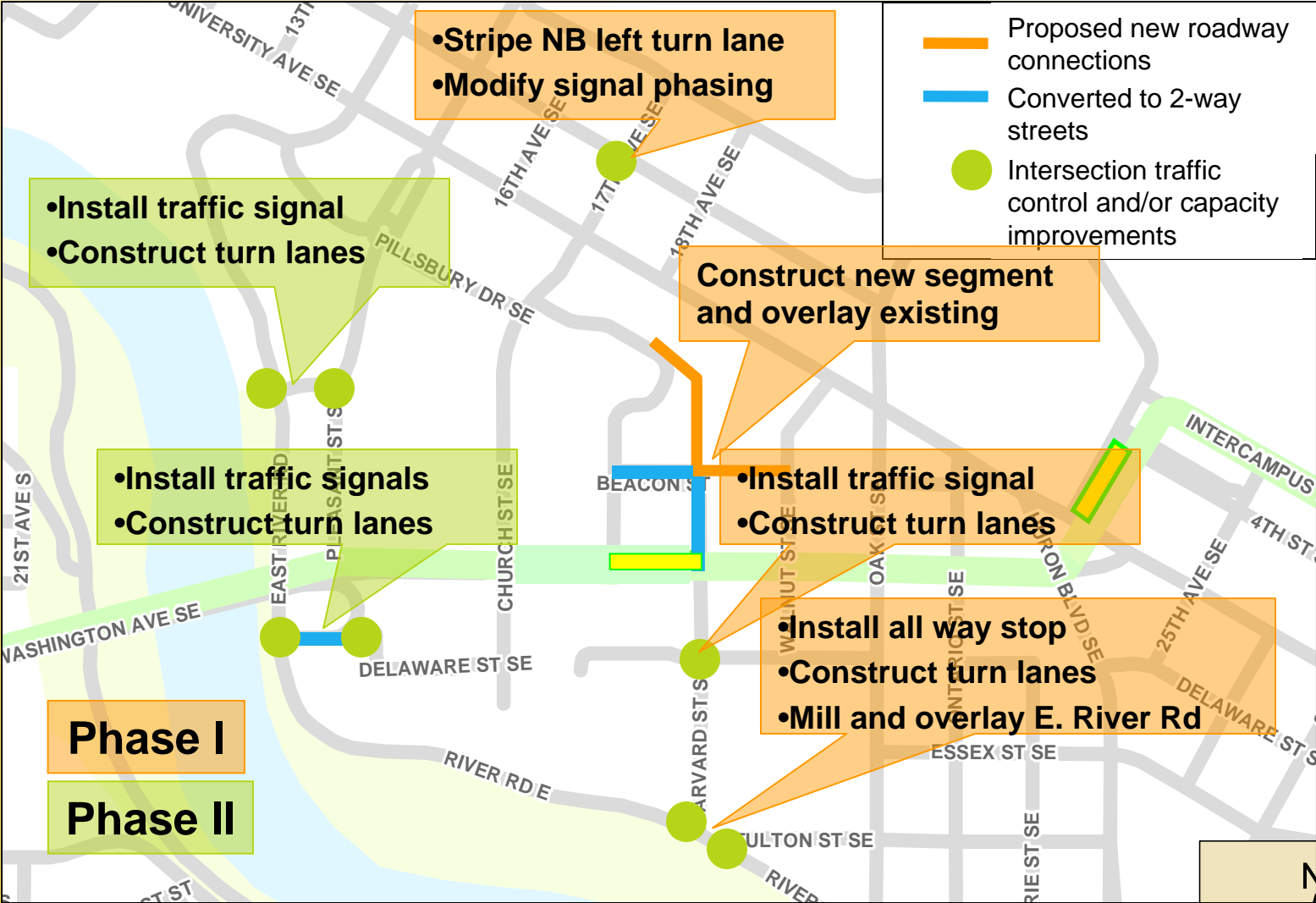
# CCPO Schedule Assumptions



- FTA issues Letter of No Prejudice for Advanced Traffic Improvement (ATI)
- Engineer's estimate ATI cost between \$4.5 million
- Met Council awards contract March 2010

# Advanced Traffic Improvements

## Central Corridor Light Rail Transit



# CCPO Schedule ATI Local Funding

	Amount (in \$ millions)
Funding Partner Commitment	
County Transit Improvement Board	\$2.7
State of Minnesota	\$0.9
Ramsey County Regional Rail Auth.	\$0.6
Hennepin County Regional Rail Auth.	\$0.3
Total	\$4.5



# CCPO Schedule Assumptions

- Met Council awards major contracts after Full Funding Grant Agreement (FFGA)

July 2010

- Civil East Construction
- Civil West Construction
- Light Rail Vehicles

Aug. 2010

- Systems Construction
- Operations and Maintenance Facility construction

# FTA Roadmap Assumptions



- FTA awards FFGA on Sept. 1, 2010
- FTA grants pre-award authority upon completion of NEPA
  - Right of way acquisition
  - Light rail vehicles

# FTA Roadmap ROW Assumptions



- FTA grants pre-award authority for acquiring right of way (ROW)
- Met Council acquires ROW prior to FFGA
  - 123 temporary easements
  - 47 permanent easements
  - 16 fee acquisitions
- CCPO estimates cost at ~ \$25 million

# FTA Roadmap

## ROW Local Funding

Funding Partner Commitment	Est. Amount (in \$ millions)
County Transit Improvement Board	\$15.0
State of Minnesota	\$5.0
Ramsey County Regional Rail Auth.	\$3.5
Hennepin County Regional Rail Auth.	\$1.5
Total	\$25.0

# FTA Roadmap

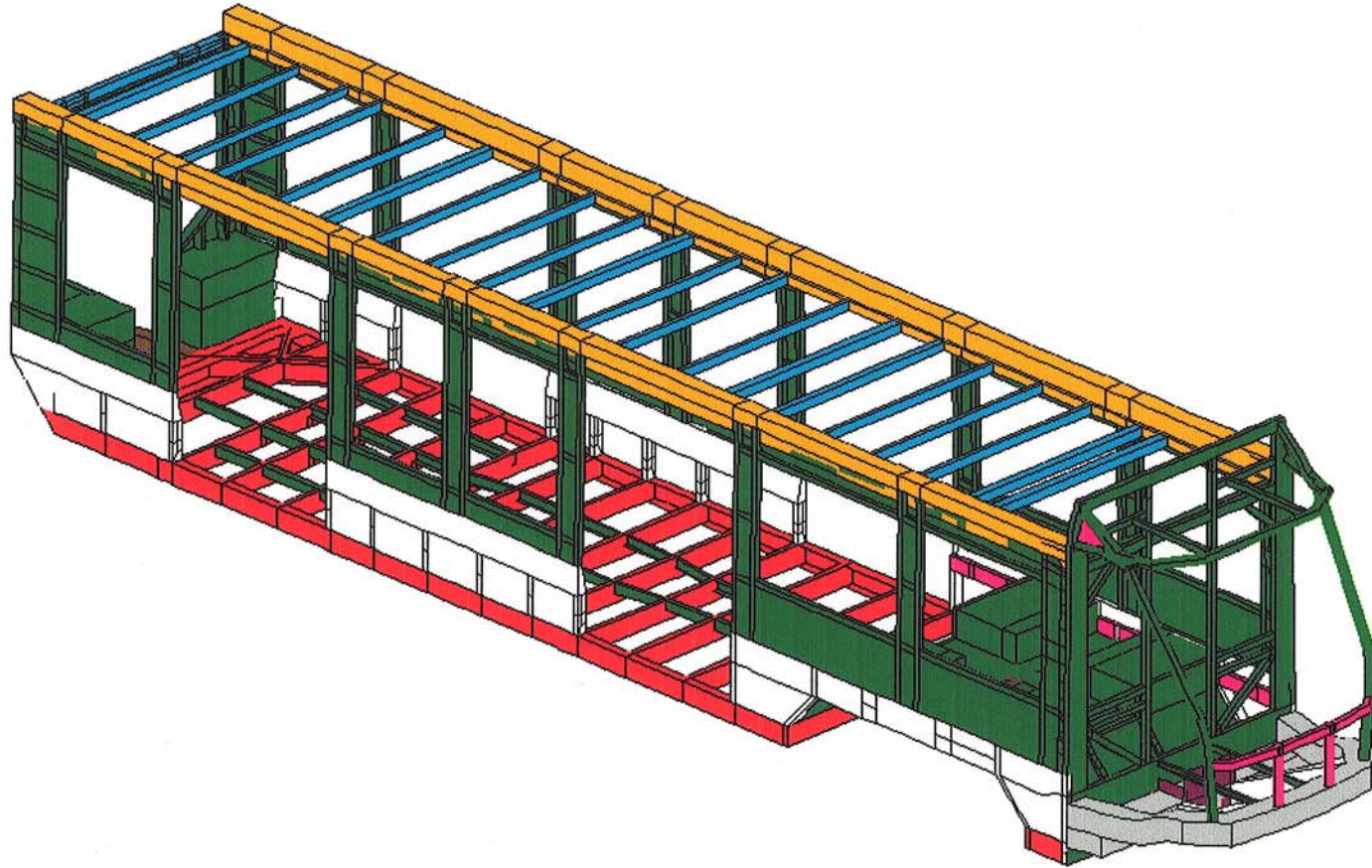
## LRV Assumptions



- FTA grants pre-award authority for Light Rail Vehicle (LRV) engineering
- CCPO estimates scope of work at ~ \$4 million
- Met Council awards contract July 2010
- Met Council issues limited Notice to Proceed (NTP) July 2010

# FTA Roadmap

## Structural Frame of 94' LRV



**General External View by Layers**  
**Carbody Preliminary Finite Element Model**  
(Sheathing on underframe, cab and roof not shown for clear view)

# FTA Roadmap

## LRV Local Funding

Funding Partner Commitment	Est. Amount (in \$ millions)
County Transit Improvement Board	\$2.4
State of Minnesota	\$0.8
Ramsey County Regional Rail Auth.	\$0.6
Hennepin County Regional Rail Auth.	\$0.2
Total	\$4.0

# FTA Roadmap Assumptions

- FTA issues Letters of No Prejudice (LONP)
  - Advanced Traffic Improvement
  - Civil East
  - Civil West
  - Systems





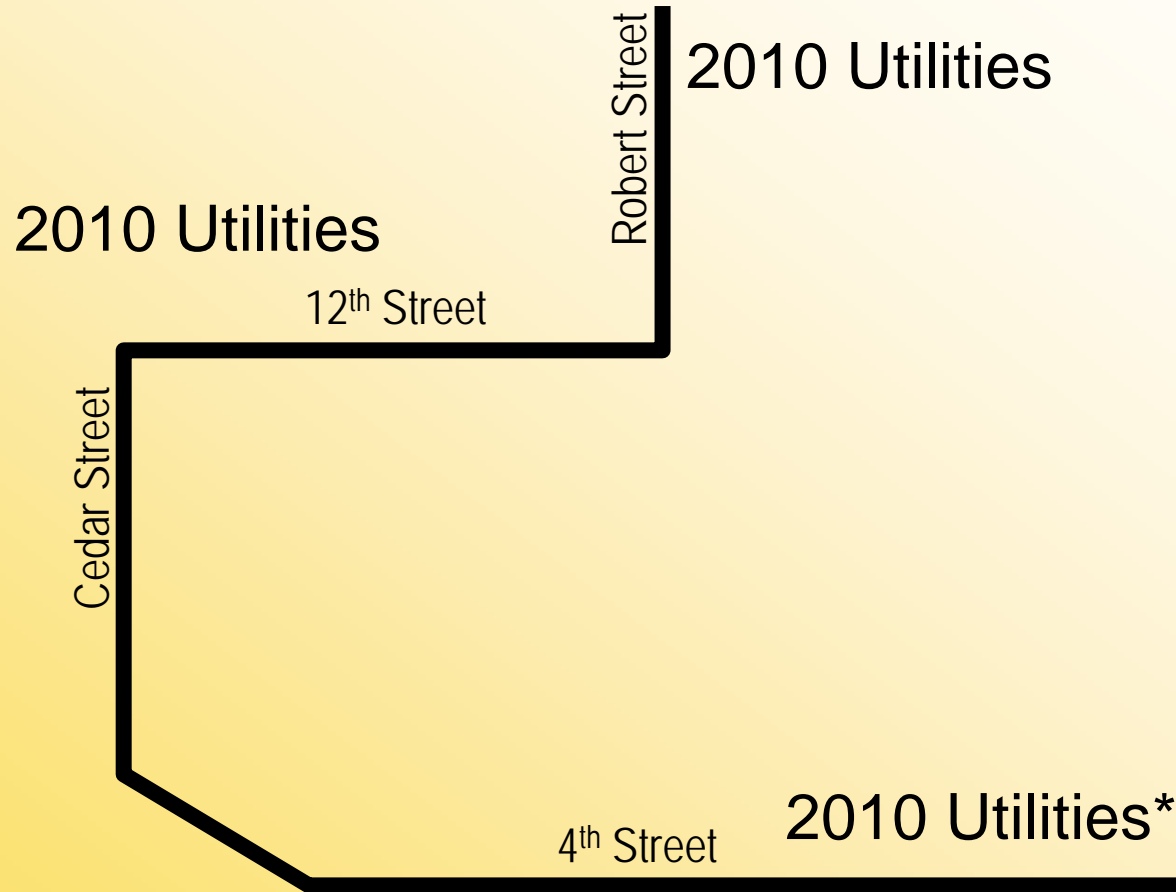
# FTA Roadmap

## Civil East Assumptions



- FTA issues LONP for limited scope of Civil East work
  - Utility relocation on Robert and 12<sup>th</sup> Streets
- CCPO estimates scope of work at ~ \$20 million
- Met Council awards contract July 2010
- Met Council issues limited Notice to Proceed July 2010

# FTA Roadmap Limited Civil East NTP



\* Complete utility relocation started in 2009 under Advanced Utility Relocation contract

# FTA Roadmap

## Civil East LONP Local Funding

Funding Partner Commitment	Est. Amount (in \$ millions)
County Transit Improvement Board	\$12.0
State of Minnesota	\$4.0
Ramsey County Regional Rail Auth.	\$2.8
Hennepin County Regional Rail Auth.	\$1.2
Total	\$20.0

# FTA Roadmap

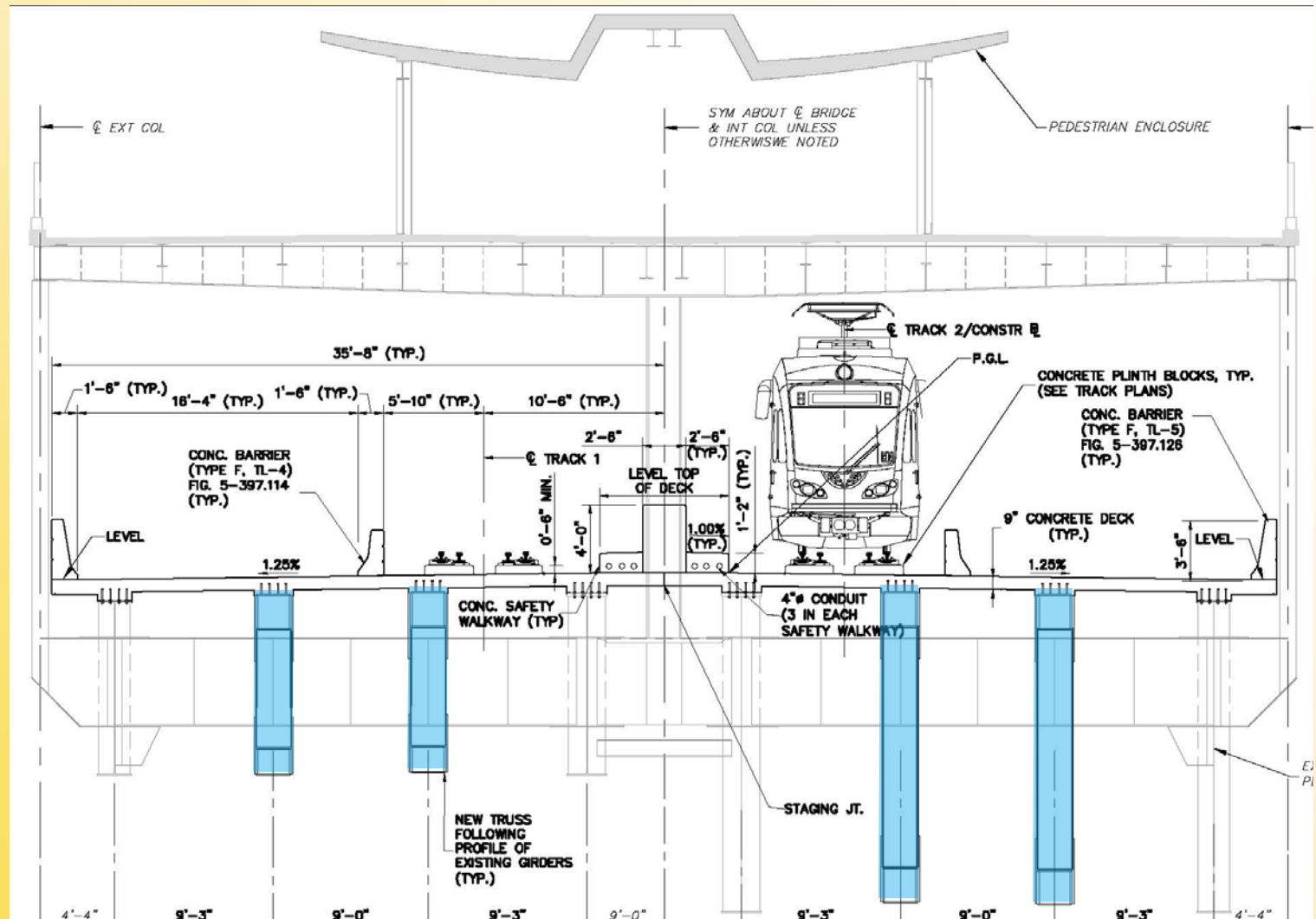
## Civil West Assumptions



- FTA issues LONP for limited scope of Civil West work
  - Steel trusses & substructure work for Washington Ave. Bridge (1,250 tons)
- CCPO estimates scope of work at ~ \$10 million
- Met Council awards contract July 2010
- Met Council issues limited Notice to Proceed July 2010

# FTA Roadmap

## Limited Civil West NTP



# FTA Roadmap

## Civil West LONP Local Funding

Funding Partner Commitment	Est. Amount (in \$ millions)
County Transit Improvement Board	\$6.0
State of Minnesota	\$2.0
Ramsey County Regional Rail Auth.	\$1.4
Hennepin County Regional Rail Auth.	\$0.6
Total	\$10.0

# FTA Roadmap

## Systems Assumptions



- FTA issues LONP for Franklin Facility RCC Upgrade and Systems Engineering
- CCPO estimates scope of work at ~ \$8 million
- Met Council awards contract Aug. 2010
- Met Council issues limited Notice to Proceed Aug. 2010

# FTA Roadmap Systems Local Funding

Funding Partner Commitment	Est. Amount (in \$ millions)
County Transit Improvement Board	\$4.8
State of Minnesota	\$1.6
Ramsey County Regional Rail Auth.	\$1.2
Hennepin County Regional Rail Auth.	\$0.4
Total	\$8.0



# Comparison of 2009/2010 Pre-Award & LONP Contract Commitments Pre FFGA

Agency Commitment	CCPO Schedule (in \$ millions)	FTA Roadmap (in \$ millions)
CTIB	25.0	50.2
State	8.3	16.7
RCRRA	5.8	11.7
HCRRA	2.5	5.0
<b>Total</b>	<b>41.6</b>	<b>83.5</b>
<b>Total Project Budget</b>	<b>941.3</b>	<b>941.3</b>
<b>Percent Pre-FFGA</b>	<b>4%</b>	<b>9%</b>

CCPO schedule assumes FFGA July 1, 2010 with two LONPs and pre-award authority

# Northstar LONPs

Central Corridor  
**Light Rail Transit**

## Percentage of Project Cost

LONP Description	Amount (in \$ millions)	% of Project Cost Pre - FFGA
Locomotive	10.7	3%
Construction	49.35	16%
Mpls Sewer & Water	1.12	0%
BNSF Earnest	10.0	3%
BNSF 1st Closing	24.0	8%
<b>TOTAL LONP</b>	<b>95.17</b>	<b>30%</b>

Total Project Cost	317.4	
--------------------	-------	--

# Summary



- Request approval of local funding commitment for ATI upon receipt of LONP
- Continue to refine FFGA and contract schedule need for additional LONPs
- Provide regular updates to Met Council and funding partners

## More Information

Check out our website:

- [www.centralcorridor.org](http://www.centralcorridor.org)

Contact Central Corridor Project Office:

- 540 Fairview Avenue North  
St. Paul, MN 55104
- Comment Line: 651-602-1645
- Email: [centralcorridor@metc.state.mn.us](mailto:centralcorridor@metc.state.mn.us)



# Local Funding Expended Through 11/30/09

Local Funding Source	Amount (in \$ millions)	% of Project Cost
State	32.5	81%
CTIB	7.2	18%
Regional Rail Authorities	0.3	1%
<b>TOTAL</b>	<b>40.0</b>	<b>100%</b>