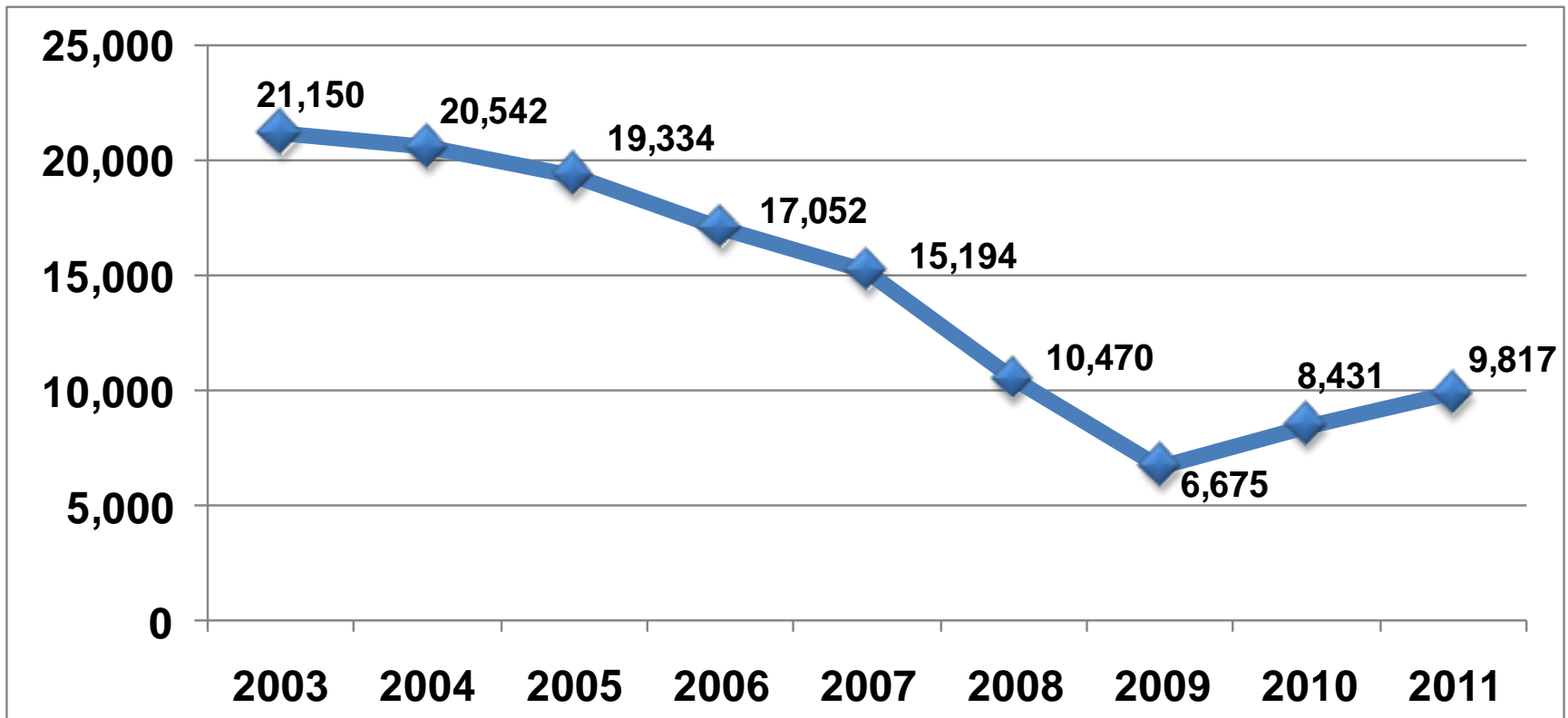


Environmental Services

Available for Operations 12/31/10	\$30.2
2011 Actual Year-end Change	.1
Rounding	.1
Available for Operations 12/31/11	\$30.4
2012 Carry-forward Amendment	(2.6)
2012 SAC Shift (Budgeted)	(4.3)
2013 – 2015 Designated SAC Shift	(11.0)
Projected Available for Operations 12/31/12	\$12.5
2012 Reserve Target (10%)	\$11.9

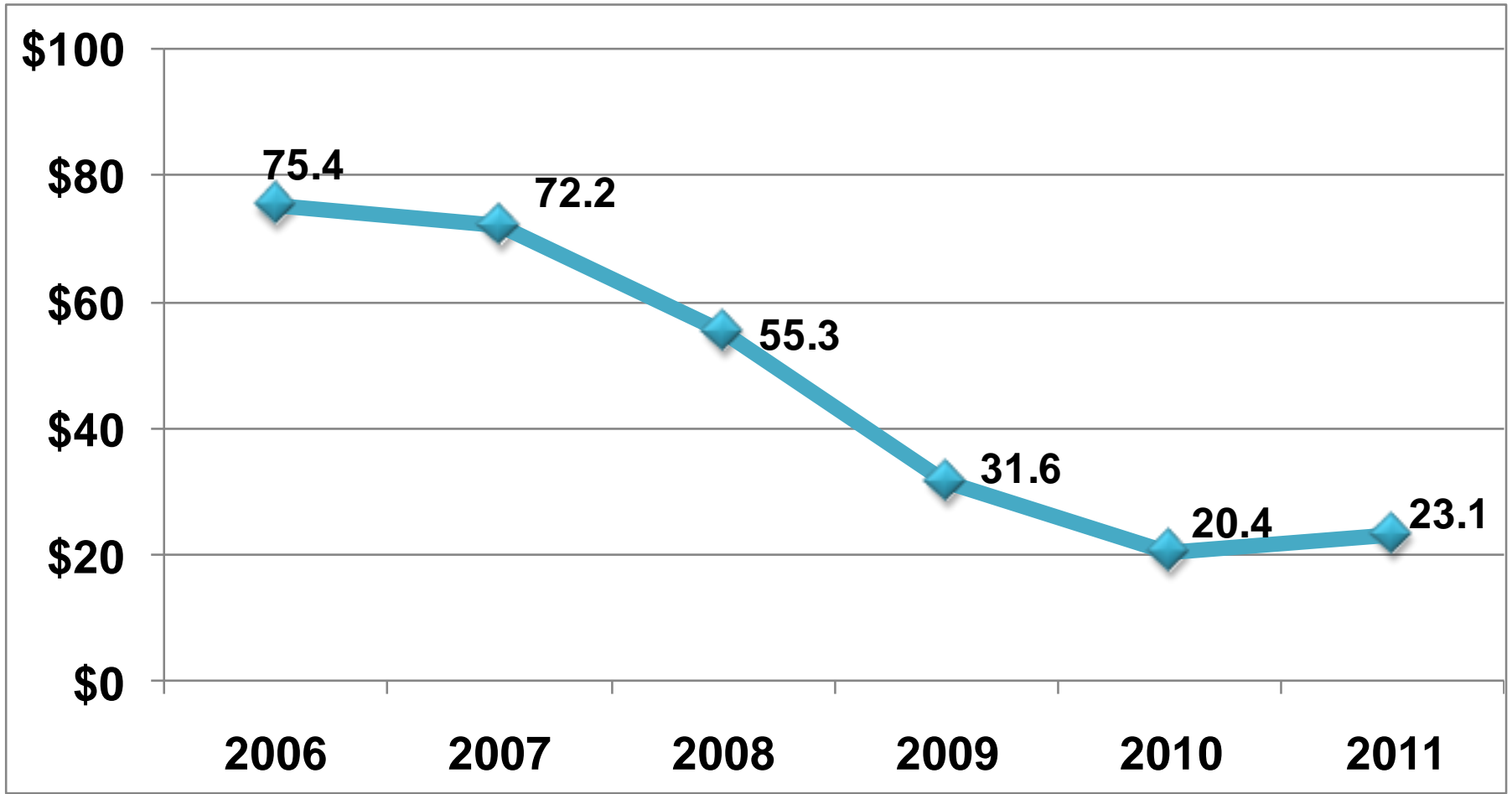
SAC Units Collected

❖ A moderate recovery in SAC units



SAC Reserve Fund: Year-end Balance

millions



Metro Transit

	Bus	LRT	CR	Total
Available for Operations 12/31/10	\$25.8	\$3.2	\$1.8	\$30.8
2011 Actual Year-End Change	11.6	(.7)	.8	11.7
Rounding	.1	.0	.0	.1
Available for Operations 12/31/11	\$37.5	\$2.5	\$2.6	\$42.6
2012 Budget	(0.7)	-	-	(0.7)
Proj Avail for Operations 12/31/12	\$36.8	\$2.5	\$2.6	\$41.9
2012 Reserve Target (8.3%)	\$21.9	\$2.3	\$1.4	\$25.6

Metropolitan Transportation Services

	Metro Mo	Trsp Plan	Cntr Svs	Total
Available for Operations 12/31/10	\$5.4	\$2.1	\$7.3	\$14.8
2011 Actual Year-end Change	(.8)	(0.7)	(4.5)	(6.0)
Avail for Operations 12/31/11	\$4.6	\$1.4	\$2.8	\$ 8.8
2012 Budget	0.5	(0.8)	(0.5)	(0.8)
Proj Avail for Operations 12/31/12	\$5.1	\$0.6	\$2.3	\$ 8.0
2012 Reserve Target (10%)	\$4.5	\$0.6	\$2.2	\$ 7.3

Motor Vehicle Sales Tax

Available for Transportation Operations 12/10	\$ 24.0
Actual Receipts	191.0
Investment Earnings	.4
Disbursed to Operating Funds	(185.3)
Available for Transportation 12/11	\$ 30.1
2012 Budget	(4.5)
Projected Available for Transportation 12/12	\$ 25.6

Dollars in millions

General Fund

Available for Operations 12/31/10	\$10.7
2011 Actual Year-end Change	.0
Available for Operations 12/31/11	\$10.7
2012 Budget	1.5
2012 Carry-forward Amendment	(2.5)
Projected Available for Operations 12/31/12	\$ 9.7
2012 Reserve Target (10%)	\$ 4.2

Health Care Liability Reserve

Fair Market Value of Assets 12/31/2011	\$ 107.0
Cumulative Unrealized Gain	.5
Actuarial Accrued Liability	\$328.4
Explicit Portion	226.5