

Scott Dentz, Manager, Interceptor Engineering

**Business Item 2012-379:
Adoption of Facility Plan for
Minneapolis Interceptor
Rehabilitation Phase 2**

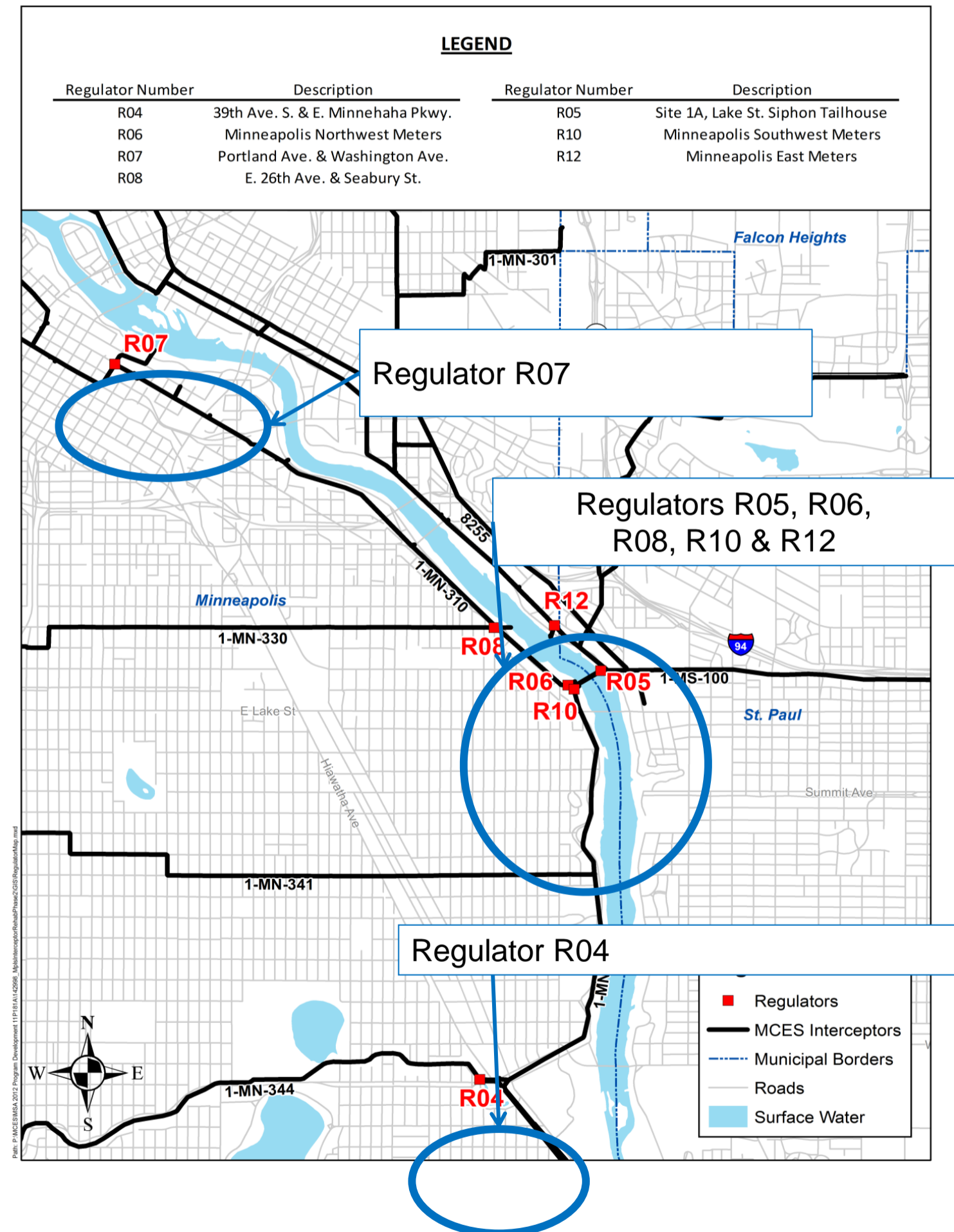
Environment Committee, Dec. 11, 2012



Proposed Project Areas

- Regulator and interceptor improvements will:

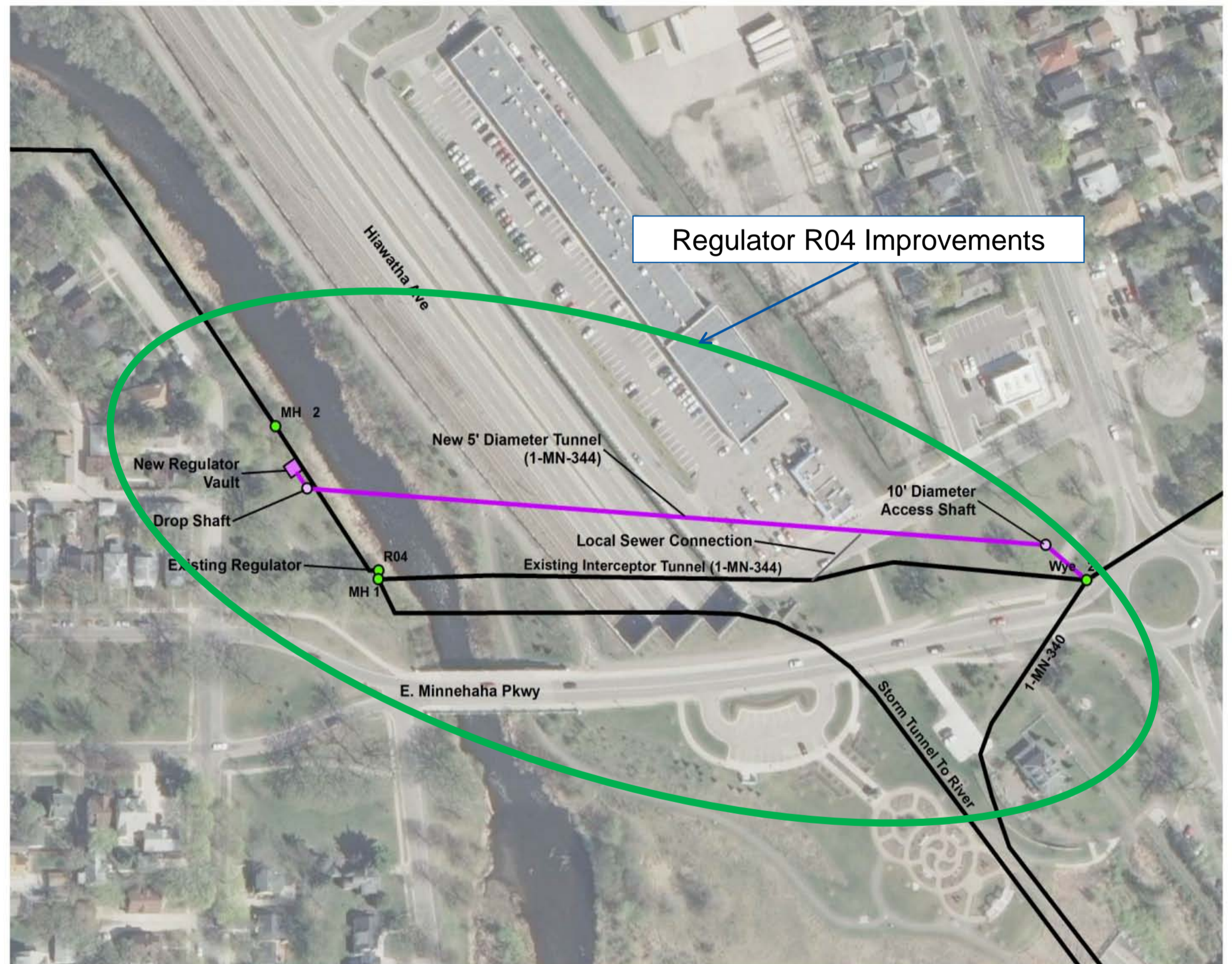
- Provide better control and monitoring
- Reduce risk and improve safety
- Maximize wastewater conveyance and protect existing sewer system
- Repair aging infrastructure
- Provide odor control facilities



Regulator R04

Recommended R04 improvements:

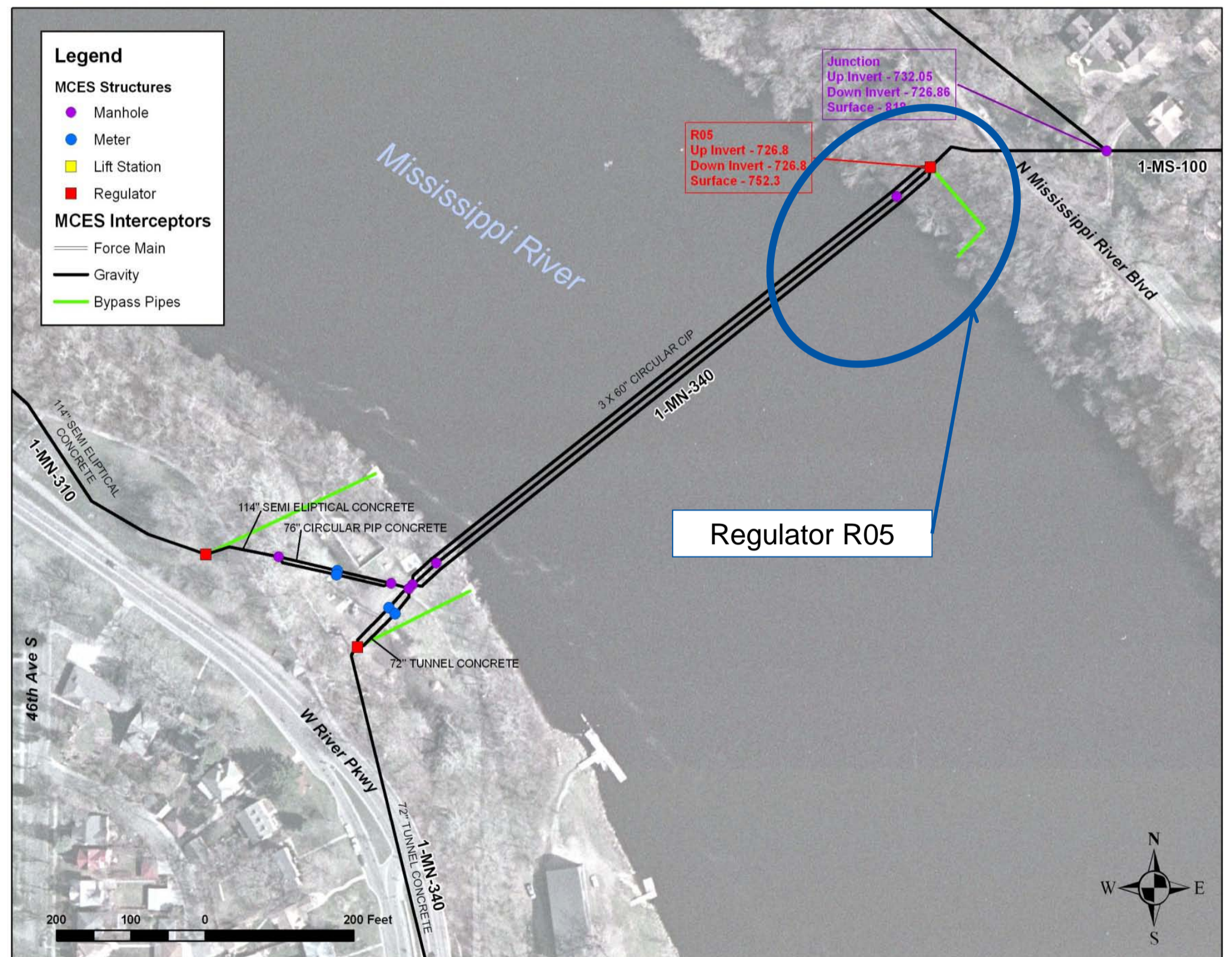
- New regulator and tunnel located upstream of the existing regulator
- Odor control facilities
- Abandonment of old facilities
- SCADA modifications to allow remote gate operation
- Construct new connecting pipe and drop shaft



Regulator R05: Lake Street Siphon Tailhouse

Recommended R05
improvements:

- Demolish overflow structure below grade
- Seal overflow access with concrete bulkhead
- Backfill and restore riverbank

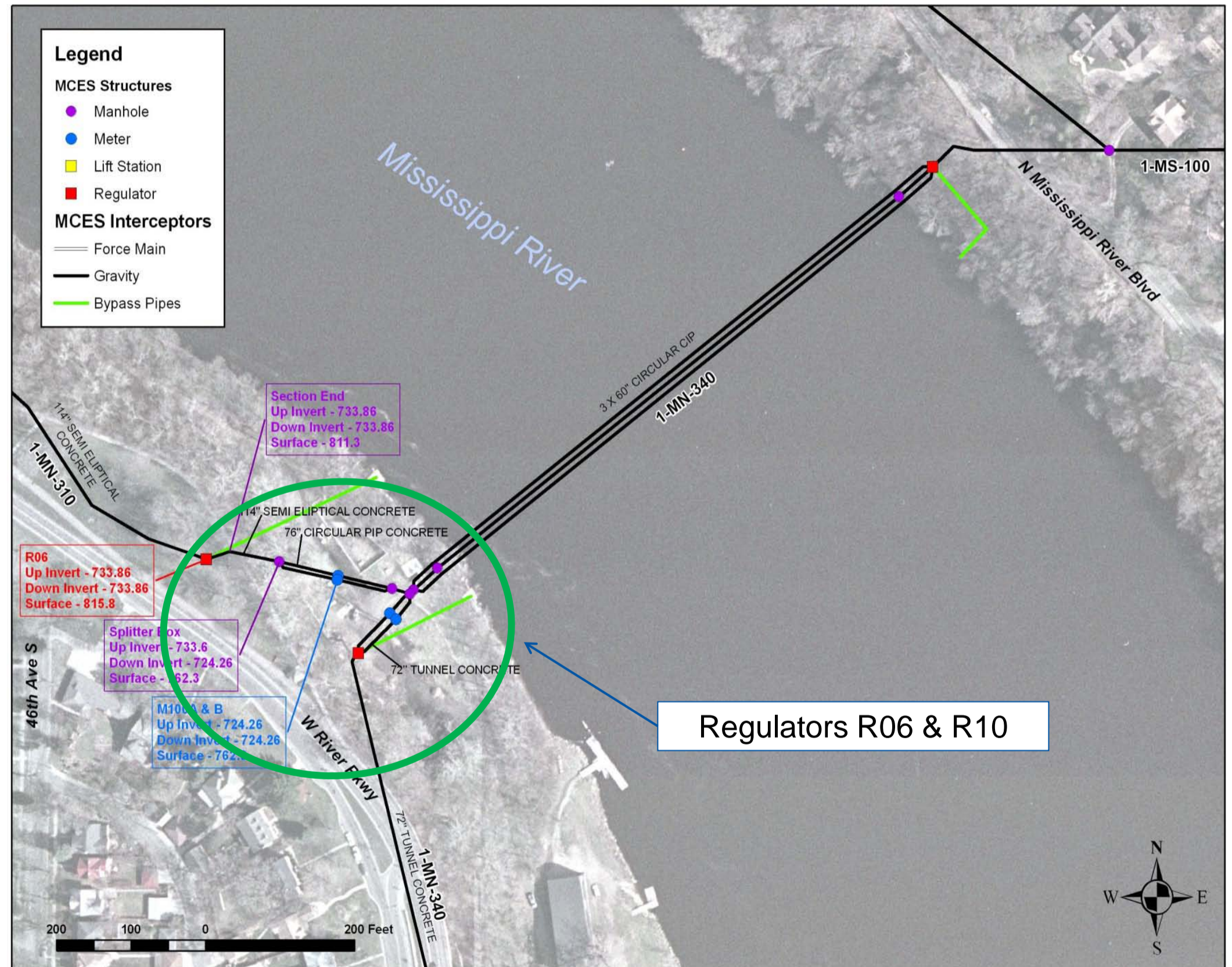


Regulators R06 and R10: Minneapolis NW and SW Meters

R06 and R10 located near West River Road north of Lake street

Recommended R06 and R10 improvements:

- SCADA modifications
- Additional odor control facilities

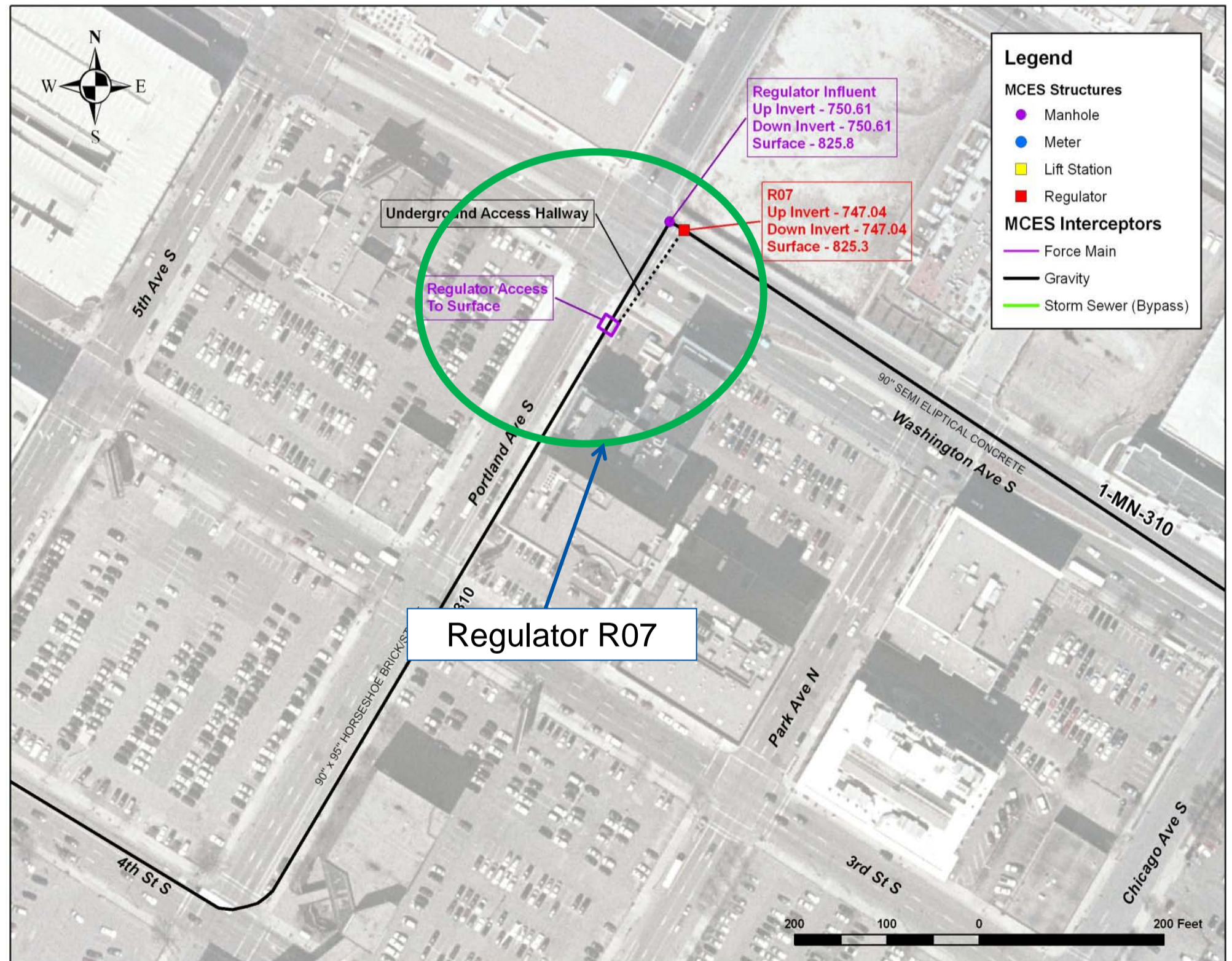


Regulator R07: Portland and Washington Avenues

Regulator R07 located at intersection of Portland and Washington Avenues in Downtown Minneapolis

Recommended R07 improvements:

- SCADA modifications
- Install fiberglass handrails
- Concrete rehabilitation
- Corrosion protection in odor control room

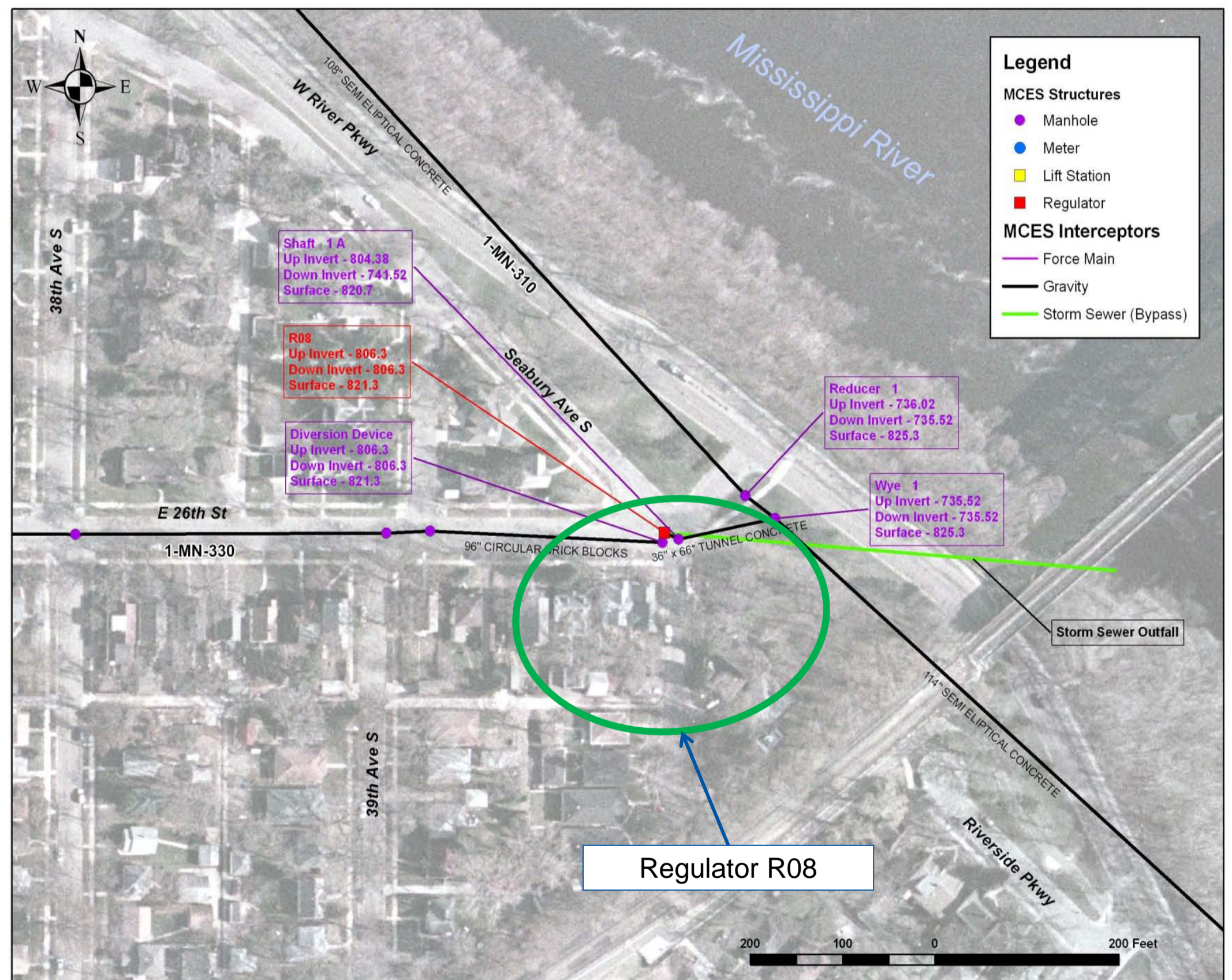


Regulator R08: 26th Ave. E. and Seabury Ave. S.

Regulator R08 is located near West River Parkway at intersection of 26th Ave. E. and Seabury Ave. S.

Recommended improvements:

- Seal existing orifice gate; partial demolition of regulator structure; remove weir
- Build new regulator structure with sluice gates for isolation
- Install odor control facilities
- SCADA modifications
- Construct new channel through old regulator to downstream pipe

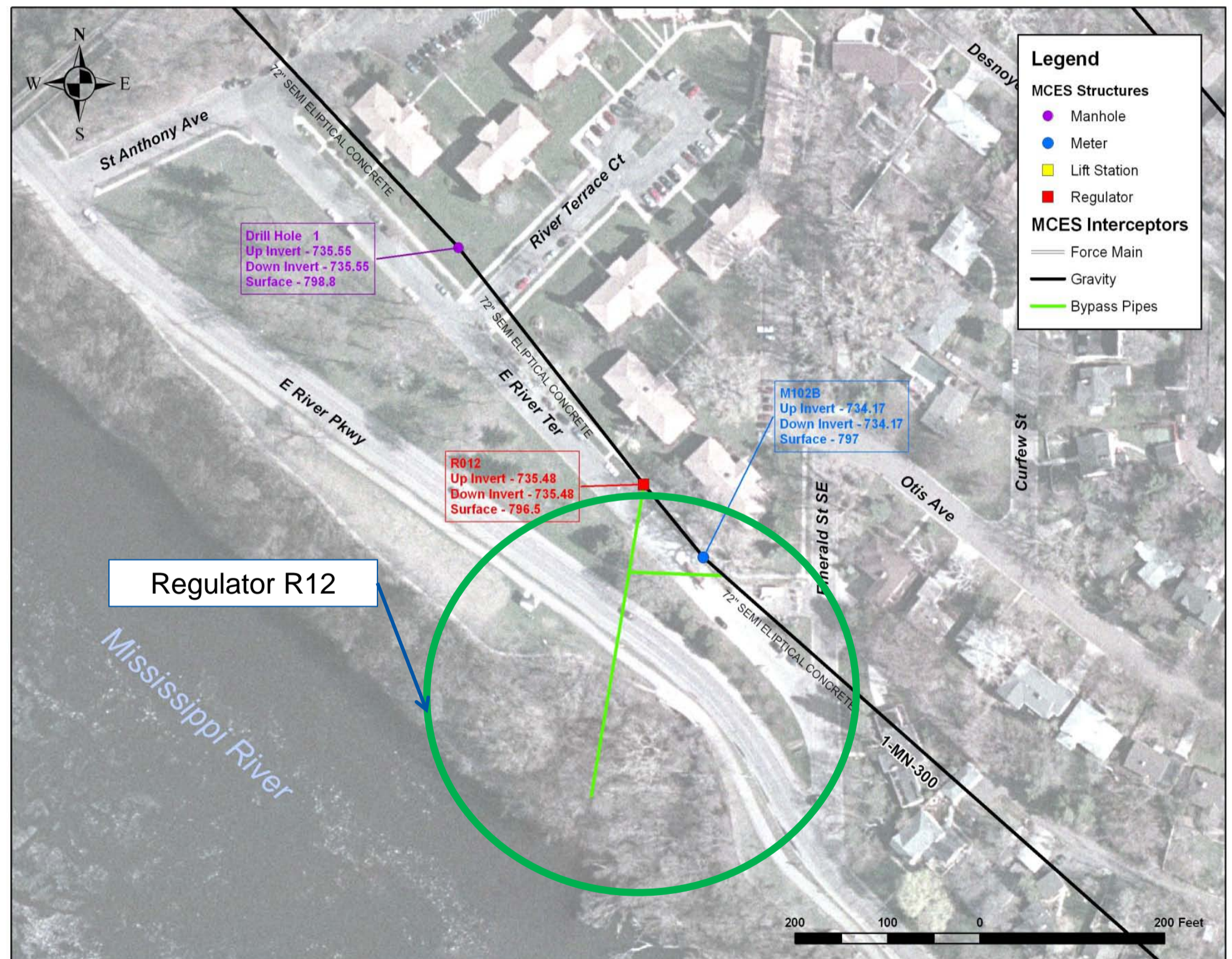


Regulator R12: Minneapolis East Meters

Regulator R12 is located on 1-MN-300 Interceptor on east side of Mississippi River near intersection of East Riverview Terrace and Emerald St. S.E.

Recommended R012 improvements:

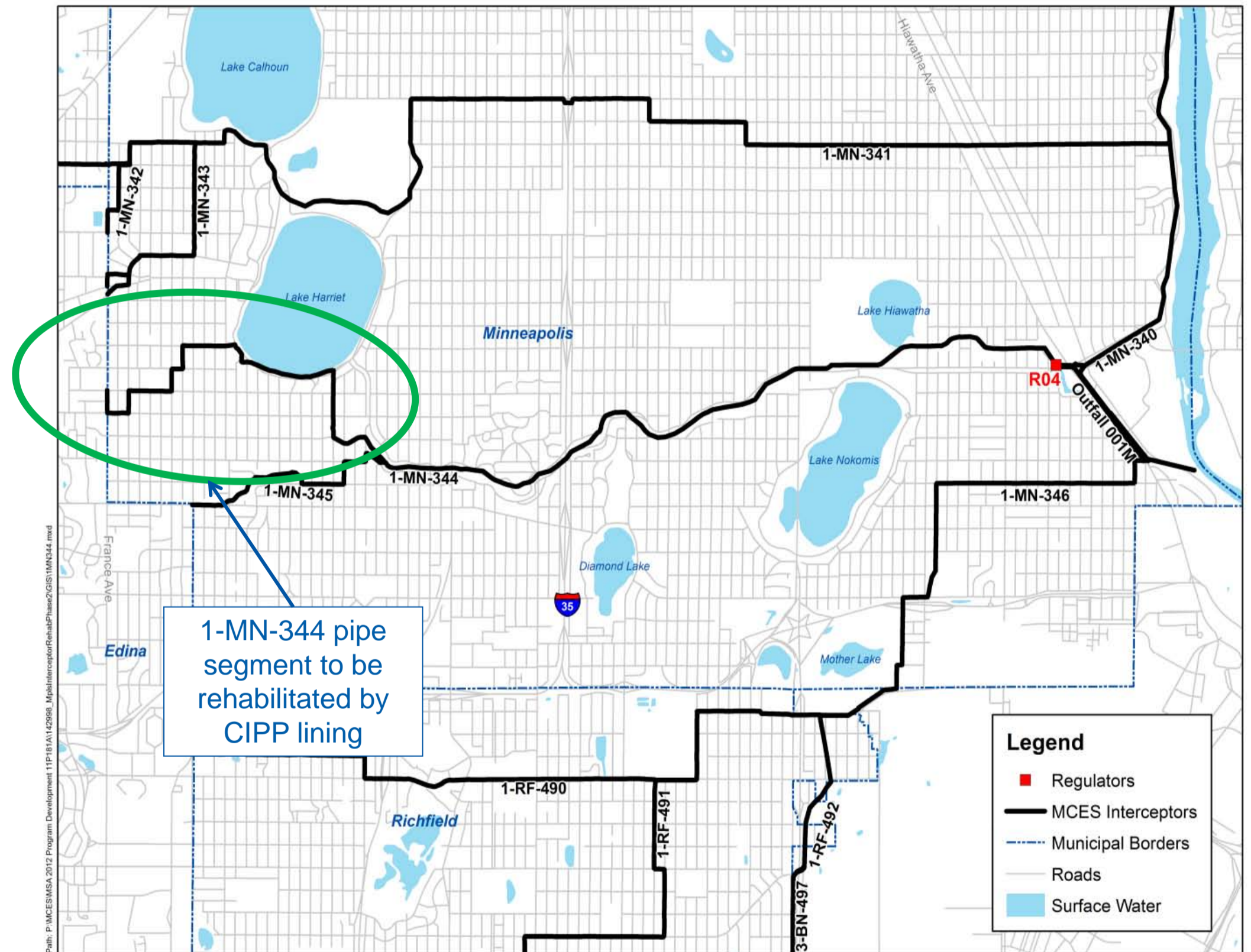
- SCADA modifications



1-MN-344 Interceptor Rehabilitation

Recommended 1-MN-344 improvements:

- CIPP liner from upper end to confluence with 1-MN-345
- Rehabilitate or replace up to 35% of maintenance hole structures
- Repair leaky pipe joints and previously abandoned maintenance holes
- Make repairs to pipe where lining is not suitable



Odor Control

- Construct odor control facilities along 1-MN-340 interceptor alignment
 - Carbon filter facilities are proposed at regulators R04, R08, R10, R06
 - Investigate and construct additional odor control facilities along 1-MN-340 between R04 and 52nd and Hiawatha

Implementation Schedule

Project	Description	Design	Construction
1	Regulators R06, R07, R10 & R12	2013	2014
2	1-MN-344 Rehabilitation	2013	2013-14
3	Regulator R04 with Tunnel	2013	2014-16
4	Regulator R08 and Demo of R05	2013	2014-15
5	SCADA Modifications	2013	2016