

Business Item 2012-347:

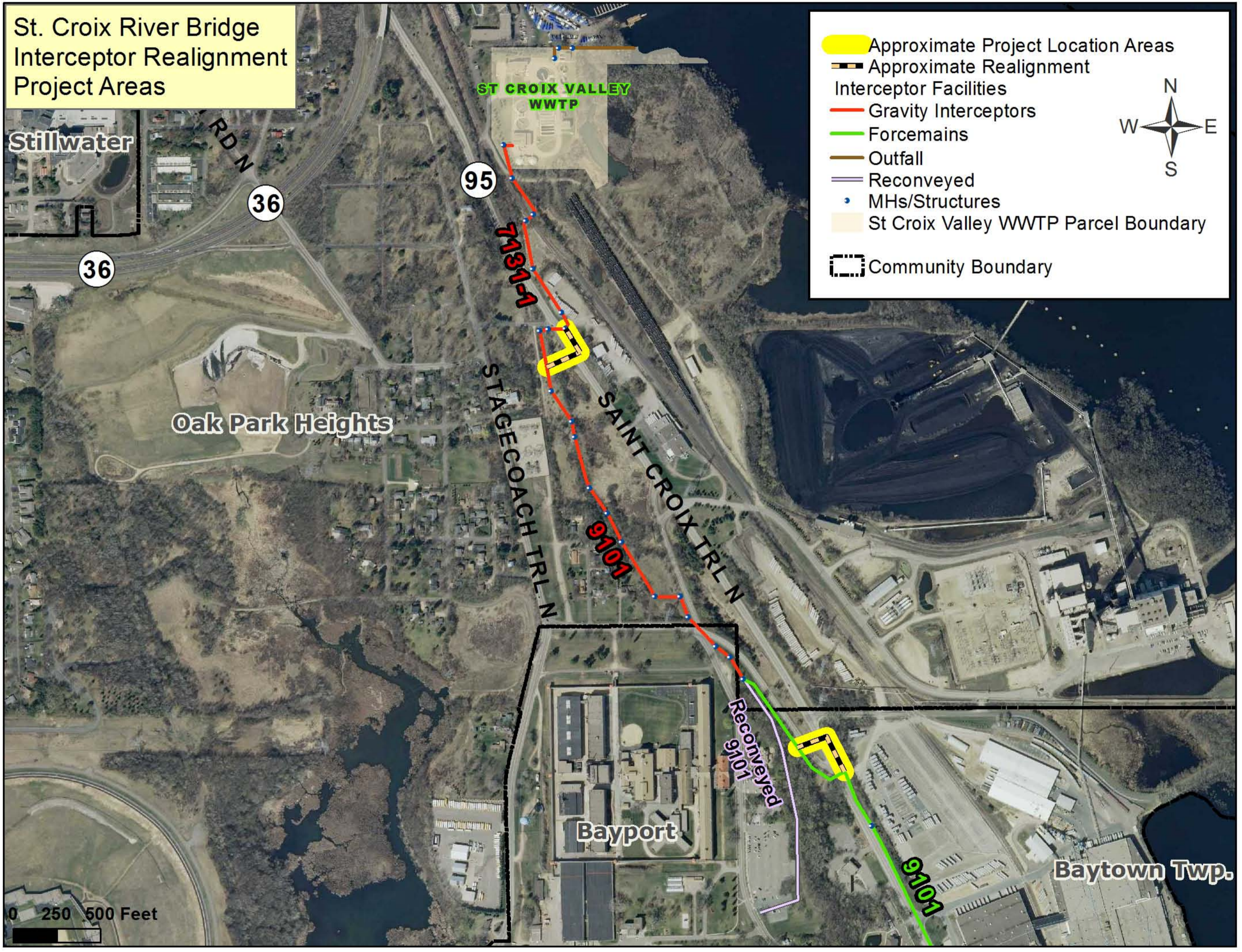
Authorization to Negotiate and Execute a Master Utility Agreement with the Minnesota Department of Transportation for the Relocation of the Bayport Interceptor 9101

**Presented to the Environment Committee
by Scott Dentz, Interceptor Engineering Manager**

November 13, 2012



**St. Croix River Bridge
Interceptor Realignment
Project Areas**



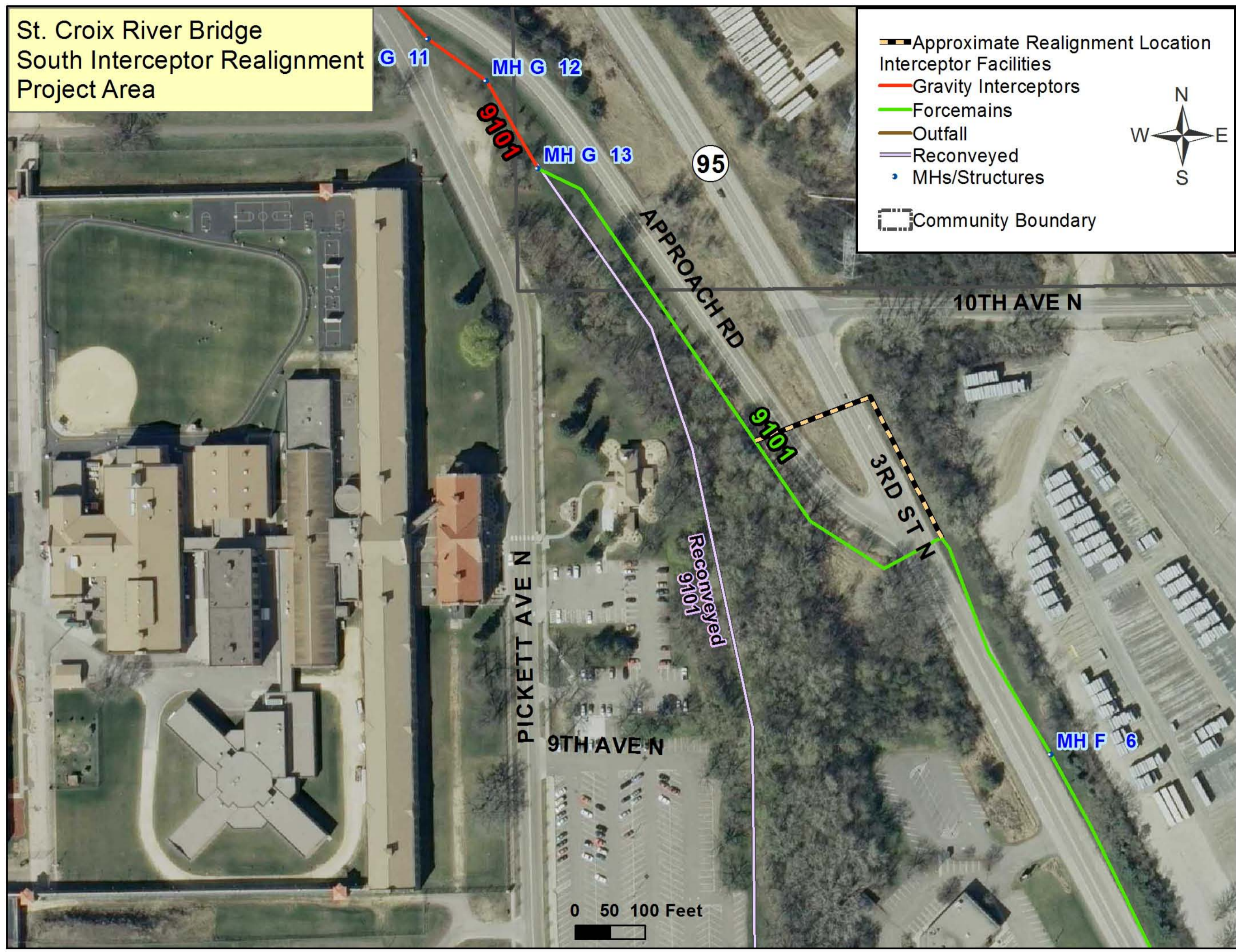
Approximate Project Location Areas

Approximate Realignment

Interceptor Facilities

- Gravity Interceptors
- Force mains
- Outfall
- Reconveyed
- MHs/Structures
- St Croix Valley WWTP Parcel Boundary
- Community Boundary

St. Croix River Bridge
South Interceptor Realignment
Project Area



G 11

MH G 12

MH G 13

95

PICKETT AVE N

9TH AVE N

APPROACH RD

Reconveyed
9101

9101

3RD ST N

10TH AVE N

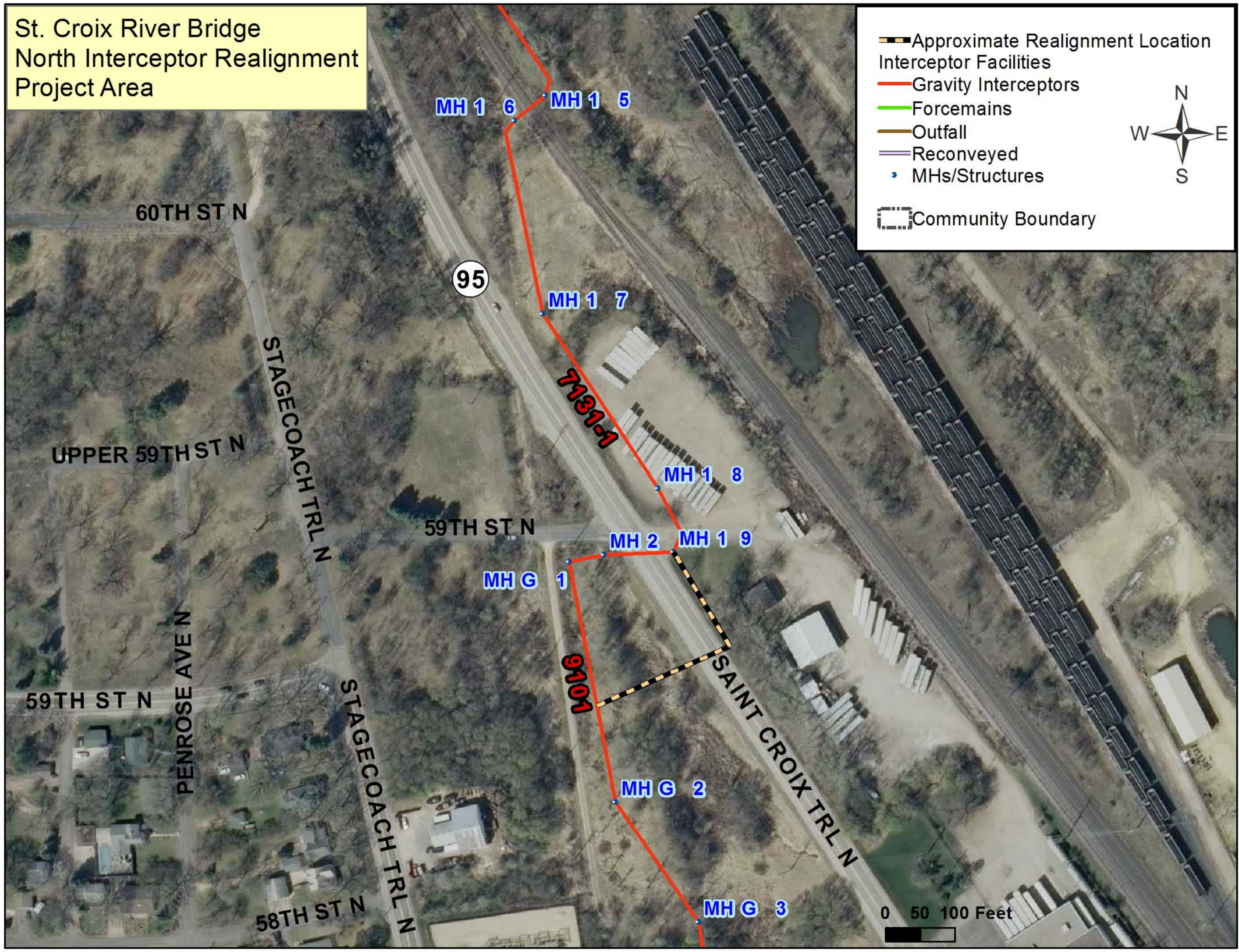
MH F 6

0 50 100 Feet

- Approximate Realignment Location
- Interceptor Facilities
 - Gravity Interceptors
 - Force mains
 - Outfall
 - Reconveyed
- MHs/Structures
- Community Boundary



St. Croix River Bridge
North Interceptor Realignment
Project Area



Legend:

- Approximate Realignment Location
- Interceptor Facilities
- Gravity Interceptors
- Forcemains
- Outfall
- Reconveyed
- MHs/Structures
- Community Boundary

North Arrow: N, S, E, W