

Business Item 2012-124:

Authorization to Increase Delegated
Change Order Authority for Golden Valley
Interceptor 1-GV-461 Improvements

Presented to the Environment Committee
April 10, 2012

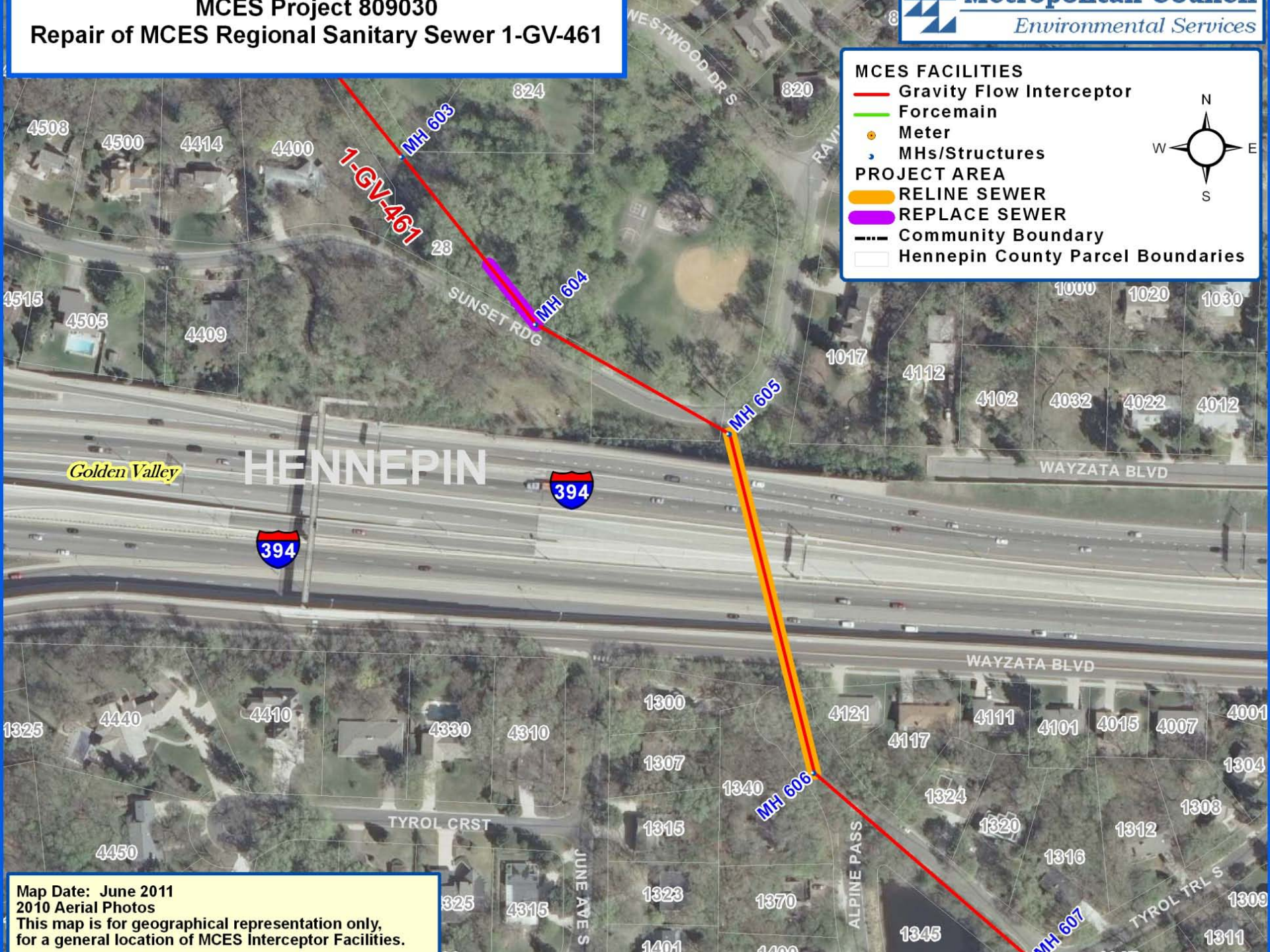
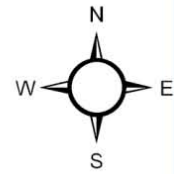
Bryce Pickart, Assistant General Manager, Technical Services

MCES FACILITIES

- Gravity Flow Interceptor
- Forcemain
- Meter
- MHS/Structures

PROJECT AREA

- RELINE SEWER
- REPLACE SEWER
- Community Boundary
- Hennepin County Parcel Boundaries



HENNEPIN

Golden Valley



Map Date: June 2011
 2010 Aerial Photos
 This map is for geographical representation only,
 for a general location of MCES Interceptor Facilities.

10-17-07
011,461
0,000.0+