

Business Item 2012-82:
Authorization to Negotiate and Execute an a
Cooperative Agreement with ISD No. 276
MCES Project 802850

Presented to the Environment Committee

February 28, 2012

William (Bill) Cook, Technical Services Engineering Manager



Excelsior Area Project





School District Site



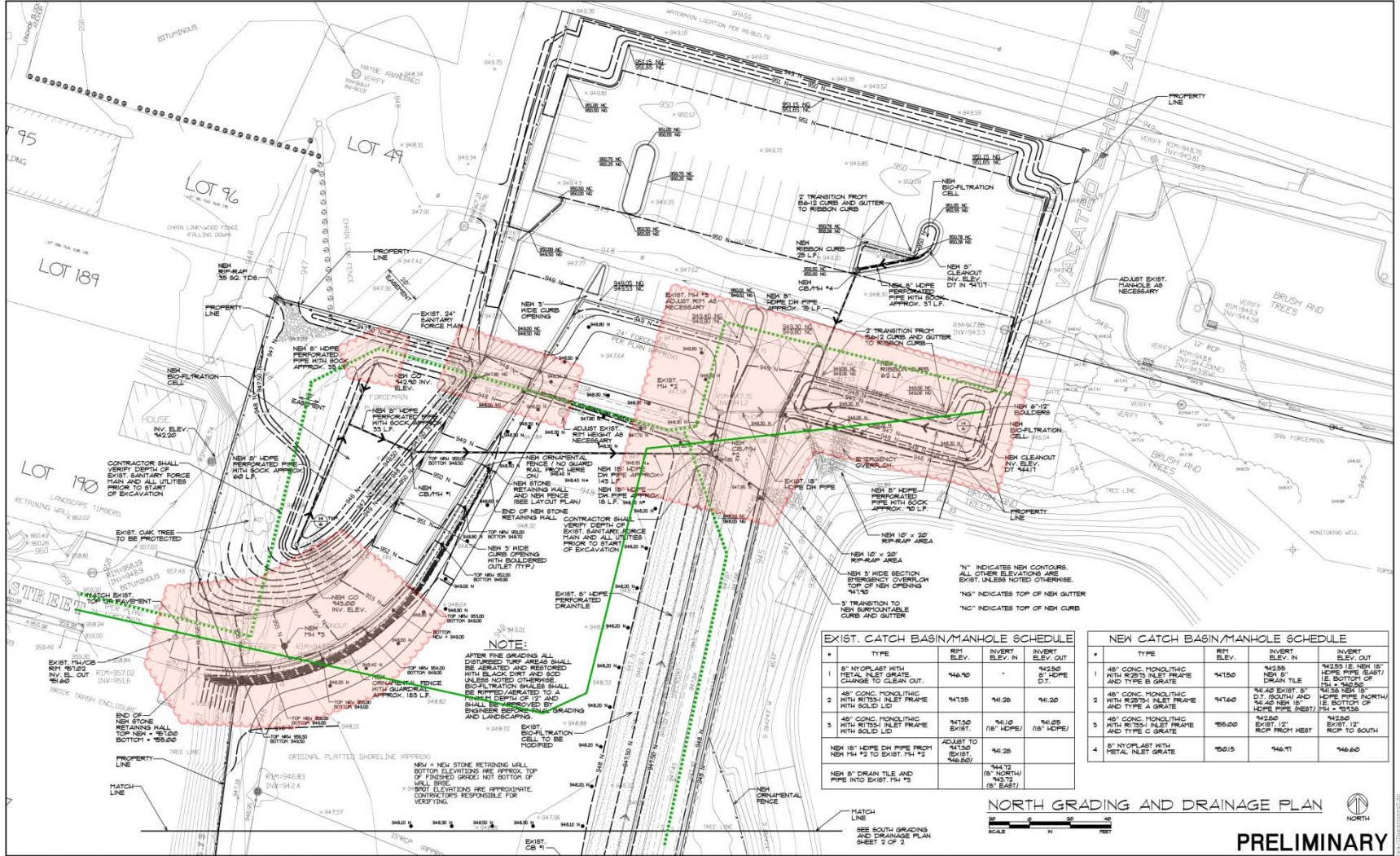


Cooperative Agreement

- **For to construction of the force main**
- **Recommendation:**
 - **Authorization to Negotiate and Execute a Cooperative Agreement with ISD No. 276**



Excelsior School Site



EXIST. CATCH BASIN/MANHOLE SCHEDULE

#	TYPE	RIM ELEV.	INVERT ELEV. IN	INVERT ELEV. OUT
1	8" NYLOPLAST WITH METAL INLET GRATE CHANGE TO CLEAN OUT.	946.70	-	946.50 8" SLOPE D/I.
2	48" CONC. MONOLITHIC WITH R2034 INLET FRAME AND TYPE B GRATE	947.35	941.25	941.25
3	48" CONC. MONOLITHIC WITH R2034 INLET FRAME AND TYPE B GRATE	947.50	941.25	941.25
4	48" CONC. MONOLITHIC WITH R2034 INLET FRAME AND TYPE B GRATE	947.50	941.25	941.25
5	18" HOPE DR PIPE FROM NEW FH #2 TO EXIST. FH #3	ADJUST TO EXIST. (946.80)	941.25	941.25

NEW CATCH BASIN/MANHOLE SCHEDULE

#	TYPE	RIM ELEV.	INVERT ELEV. IN	INVERT ELEV. OUT
1	48" CONC. MONOLITHIC WITH R2034 INLET FRAME AND TYPE B GRATE	941.50	941.50	942.55 (E. NEW 18" HOPE PIPE (EAST) IE. BOTTOM OF FH # 3)
2	48" CONC. MONOLITHIC WITH R2034 INLET FRAME AND TYPE B GRATE	941.60	941.60	941.55 (N. NEW 18" HOPE PIPE (NORTH) IE. BOTTOM OF FH # 3)
3	48" CONC. MONOLITHIC WITH R2034 INLET FRAME AND TYPE B GRATE	950.00	942.20	942.60 EXIST. 12" RCP FROM WEST EXIST. 12" RCP TO SOUTH
4	8" NYLOPLAST WITH METAL INLET GRATE	950.15	946.71	946.60

GENERAL PROJECT NOTES :

1. Verify measurements and conditions on the project.
2. Specifications include brief descriptions of existing conditions.
3. Review specifications for construction not shown on drawings.
4. Existing and new materials conditions to several details may be noted on only one.
5. Detailed portions on details represent existing conditions.
6. Review project specifications for additional details not shown on drawings.
7. Contractor shall be responsible for maintaining safe working conditions on sites for employees or other persons at the site.

GENERAL DETAIL NOTES :

1. Shaded portion on key and site plan represent existing buildings.

DETAIL SYMBOLS :

- Existing/New sod
- Existing/New concrete
- Existing/New base aggregate
- Existing/New driveway pavement

DESIGNER: CLIFFORD K. BURMAN
 TYPED OR PRINTED NAME: CLIFFORD K. BURMAN
 DATE: 08/27/2014 10:20AM

2012 NEW NORTH DRIVE AND PARKING LOT EXCELSIOR ELEMENTARY SCHOOL 495 OAK STREET EXCELSIOR, MINNESOTA

PRELIMINARY

INSPEC 0.2011

PROJ. MGR. C.B. DR. ST. PROJ. NO. 21734 CK. BB. DATE: 8/27/14 SHT. 1 OF 6