

**Agenda Item 2012-20:
Authorization for Sole Source Procurement
for Update of the Metro Model 2**

Environment Committee
January 10, 2012

Keith Buttleman
Assistant General Manager

Lanya Ross
Principal Environmental Scientist





Proposed Action

Authorize Regional Administrator to contract with Barr Engineering Company for an update of the Twin Cities Metropolitan Area Regional Groundwater Flow Model (Metro Model 2) on a sole source basis.

Contract amount not to exceed \$314,570 over a five-year period.



Project Need

- State law charges the Metropolitan Council with developing and maintaining a base of technical information needed for sound water supply decisions
- The Council's primary tool to generate this information is a regional groundwater flow model, the Metro Model 2
- Metro Model 2 needs to be updated

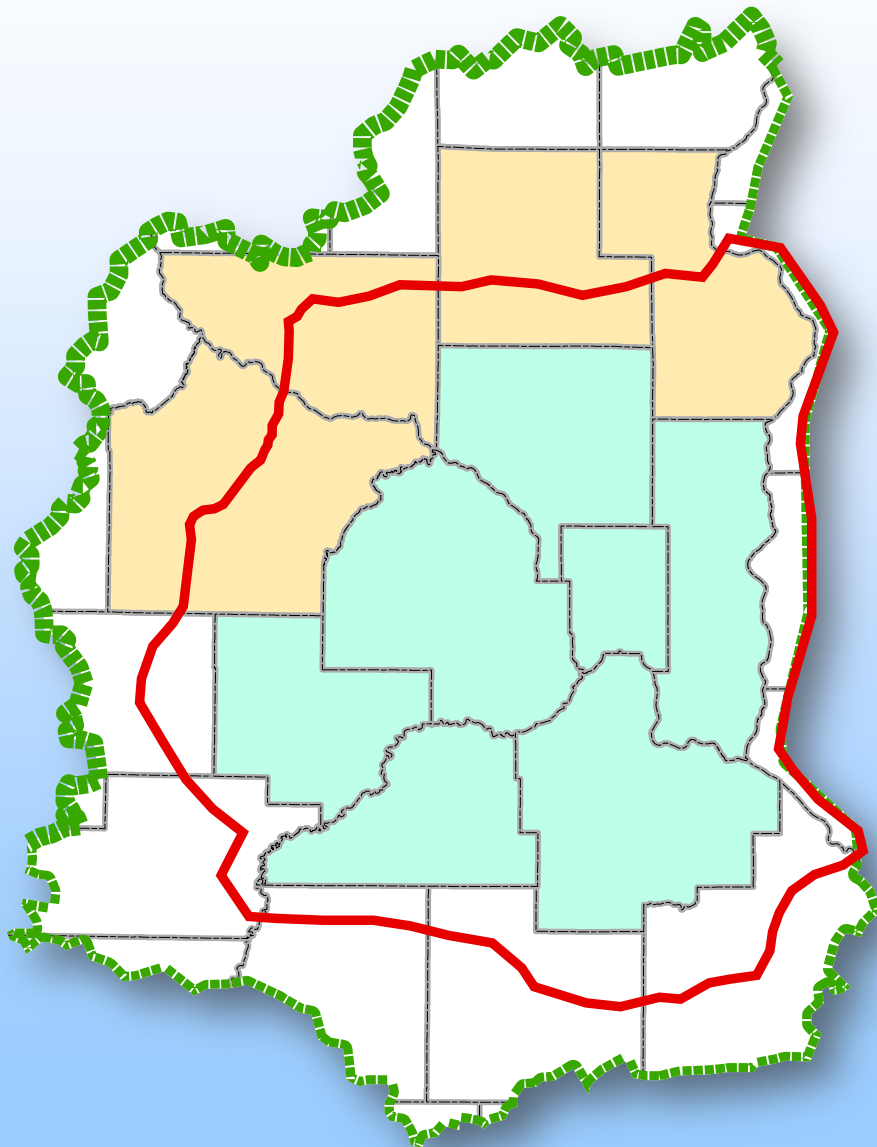


New Information

- 2007 Hydraulic Condu
- Current Hydraulic Cor



New Model Boundary



- Better representation of surrounding conditions
- Incorporates new DNR monitoring wells
- Reflects watershed boundaries for more useful mapping



Results

The updated Metro Model 2 will provide:

- Better information to inform water supply-related recommendations and policies in Council plans
- An improved base of technical information needed for sound water supply decisions
- Better usability for external stakeholders engaged in state-, local-, and watershed-level planning