

Overview of MCES' Role in Water Resources Management and Planning

Metropolitan Council Environment Committee

April 12, 2011

Judy Sventek, Manager
Water Resource Assessment

Kyle Colvin, Assistant Manager
Engineering Services



Regional Planning Process

Metropolitan Development Guide

- **2030 Framework**
- **System policy plans**
 - ✓ Transportation (Aviation)
 - ✓ Water Resources
 - ✓ Regional Parks
- **System Statements**
- **Regional services**

Local communities

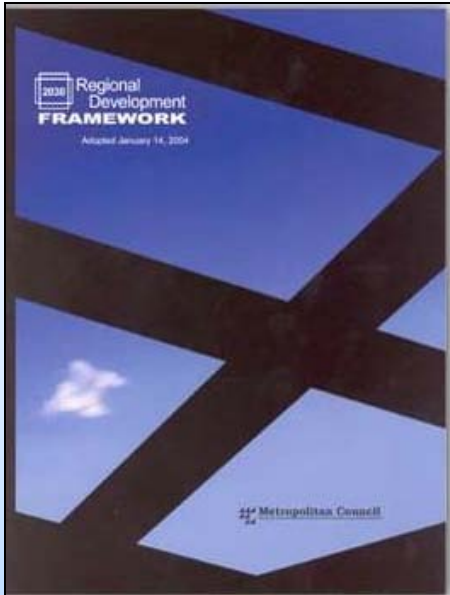
- **Comprehensive plans**
- **Services**



**Integration
of regional
perspective
with local
values
and needs**



Development Framework



Policy 1:

Work with local communities to accommodate growth in a flexible, connected and efficient manner.

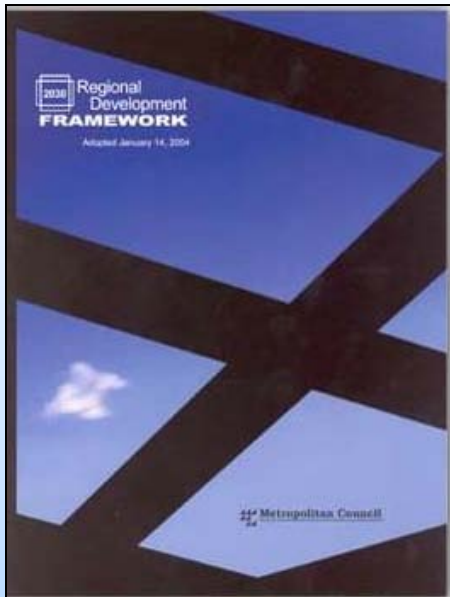
Policy 4:

Work with local and regional partners to reclaim, conserve, protect and enhance the region's vital natural resources.





Framework Direction



- **Encourage growth and reinvestment in adequately sewerred urban and rural centers**
- **Promote development strategies that help protect and sustain the region's water supply**
- **Work to preserve the quality of the region's water resources**



Water Resources Management Policy Plan

- **Water Supply**
- **Surface Water Management**
- **Wastewater**
- **Wastewater System Plan**



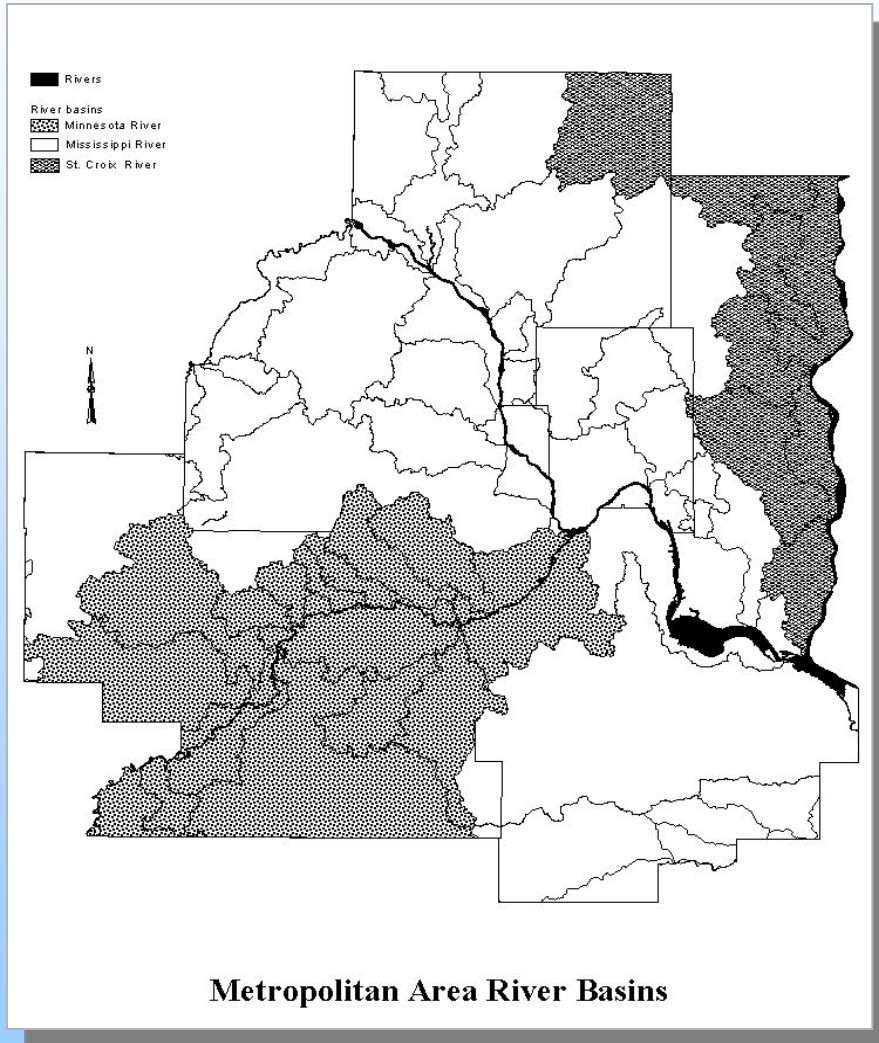


Water Resources Management Policy Plan

- **Provide guidance and policy for:**
 - **County/City/Township Comprehensive Plans**
 - **Watershed Management Plans**
 - **Local Water Management Plans**
 - **Local Water Supply Plans**
 - **Local Comprehensive Sewer Plans**
 - **County Groundwater Plans**
 - **Wellhead Protection Plans**



Surface Water Management

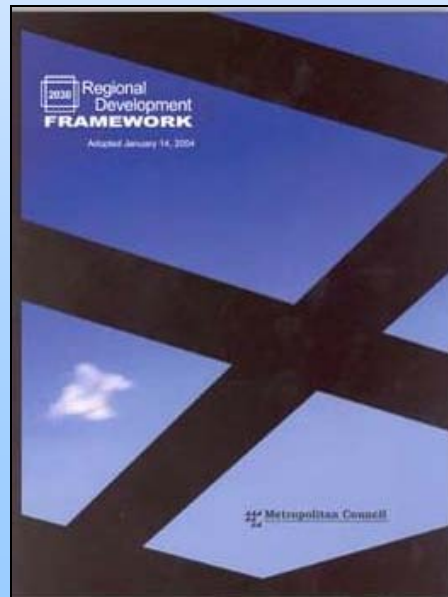


- **Mississippi, Minnesota and St. Croix Rivers**
- **More than 40 tributary sub-basins**
- **950 lakes**
- **Extensive wetlands**



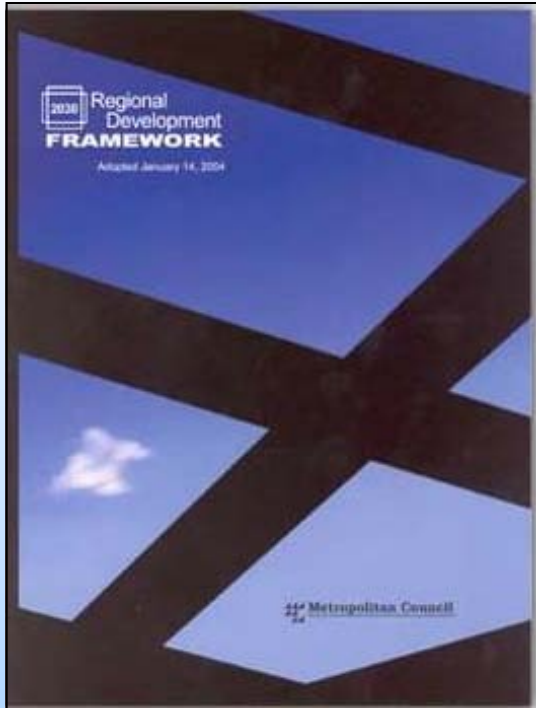
Framework Surface Water Management Plan Benchmark

The quality of water leaving the metropolitan area is as good as the quality of water entering the metropolitan area





Surface Water Management Plan Policies



- **Provide technical assistance and resource assessment information aimed at protecting wetlands, lakes, streams, rivers and natural drainage courses.**
- **Review plans and environmental documents for consistency with Council policy.**





Implementation Strategies

- **Provide technical assistance**
- **Monitor and assess lakes, rivers and streams**
- **Review local water plans for potential system impact**
- **Manage for point and nonpoint source pollution**
- **Develop target pollution loads**





Main Impact for Communities

- **Communities must have a local surface water plan as part of their comprehensive plans**
- **Communities must have erosion and sediment control ordinances in place to implement local plans**



Wastewater System

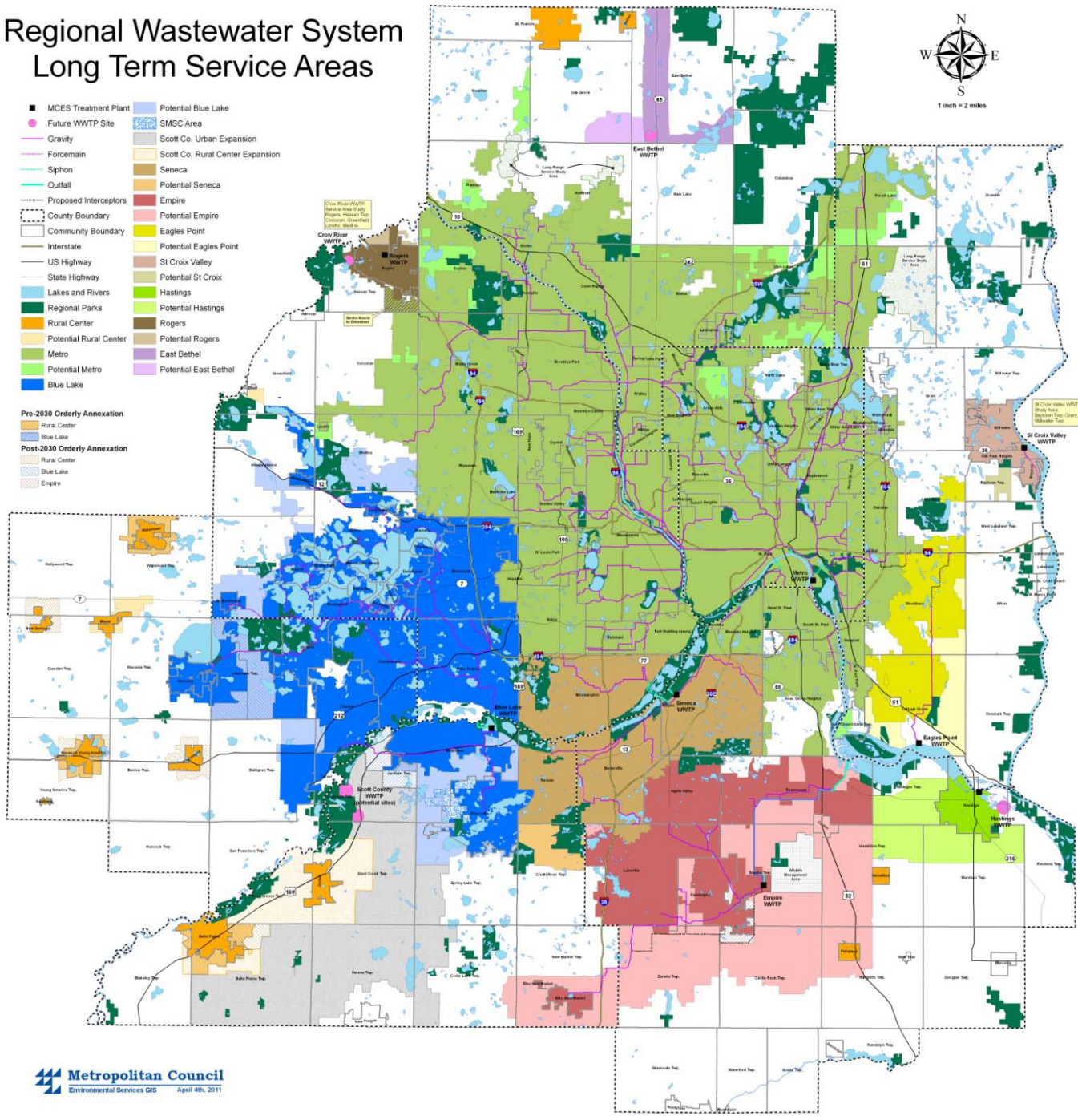
- **Seven wastewater treatment plants treating approximately 260 MGD**
- **625 miles of regional interceptors**
- **Provides service to 2.8 million people and 105 communities**



Regional Wastewater System Long Term Service Areas



- MCES Treatment Plant
 - Future WWTP Site
 - Gravity
 - Forcemain
 - Siphon
 - Outfall
 - Proposed Interceptors
 - - - County Boundary
 - ▭ Community Boundary
 - Interstate
 - US Highway
 - State Highway
 - Lakes and Rivers
 - Regional Parks
 - Rural Center
 - Potential Rural Center
 - Metro
 - Potential Metro
 - Blue Lake
 - Potential Blue Lake
 - SMSC Area
 - Scott Co. Urban Expansion
 - Scott Co. Rural Center Expansion
 - Seneca
 - Potential Seneca
 - Empire
 - Potential Empire
 - Eagles Point
 - St Croix Valley
 - Potential St Croix
 - Hastings
 - Potential Hastings
 - Rogers
 - Potential Rogers
 - East Bethel
 - Potential East Bethel
- Pre-2030 Orderly Annexation**
- Rural Center
 - Blue Lake
- Post-2030 Orderly Annexation**
- Rural Center
 - Blue Lake
 - Empire





Wastewater Policy Overview

- **Use the wastewater system plan to support orderly and economic development.**
- **Efficient use of the existing and planned regional infrastructure system.**
- **Establish I/I goals for all communities discharging wastewater to the regional wastewater system.**
- **Implement and enforce Waste Discharge Rules for the regional wastewater system.**



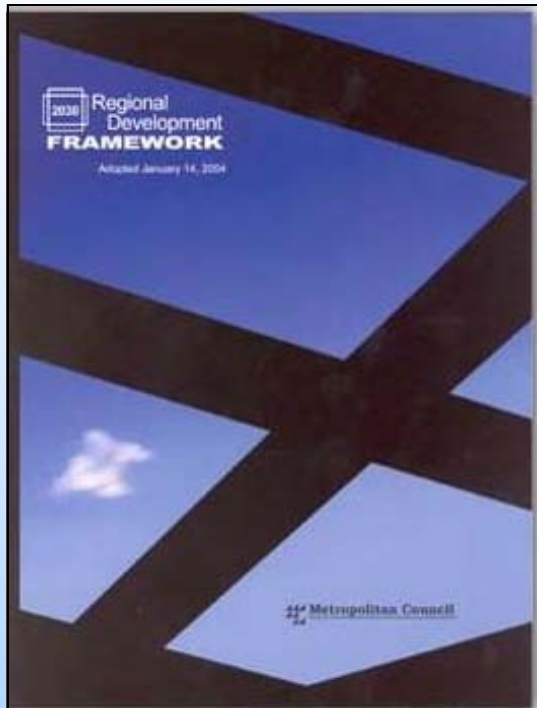
Wastewater Policy Overview

- **Comply with permits and other regulatory requirements.**
- **Accept septage, biosolids and other hauled liquid waste at designated sites.**
- **Design and adopt fees and charges using a regional cost-of-service basis.**
- **Maintain rates that enable MCES to:**
 - **Meet regulatory requirements**
 - **Preserve infrastructure**
 - **Provide capacity for growth**



Main Impact for Communities

- **Communities must submit a comprehensive sewer plan as part of their comprehensive plan updates**





Wastewater System Plan

Metropolitan Council Actions

- **Comprehensive Plan (Land Use) – Metropolitan Council action: Accept Plan**
- **Comprehensive Sewer Plans – Metropolitan Council action: Approve Plan**





Wastewater System Plan

Elements of Wastewater Plan

- **Forecasts sewerred & unsewered population, household & employment, flow projections**
- **Local wastewater collection description with planned expansions, connections and changes**
- **Inflow & Infiltration mitigation programs**
- **Subsurface sewage treatment system (SSTS)**



Wastewater System Plan

2008 Plan Update Status

Communities required to submit Wastewater Plan:

Communities served directly by MSD:	105
Community served via adjacent community:	1
Communities served via local WWTP:	12
Communities to be added to MDS by 2030:	6
	<hr/>
	124



Wastewater System Plan

2008 Comprehensive Sewer Plan Update Status

- **Outstanding plan approvals**
 - **Brooklyn Park**
 - **Crystal**
 - **Gem Lake**
 - **Greenfield**
 - **Landfall**
 - **Lexington**
 - **Vadnais Heights**
- **Plan to be resubmitted**
 - **Lino Lakes**



Wastewater System Plan

2007 Regional I/I Program:

2003 – Established Community Task Force

2004 – Task Force recommended I/I “Surcharge Program”

2004 – Community peak flow measurement begins

2007 – 2011 Community work plans



Identified Excess I/I Communities (Metro Area)

**Arden Hills
Bayport
Bloomington
Chanhassen
Chaska
Columbia Heights
Eagan
Eden Prairie
Edina
Excelsior
Farmington
Golden Valley
Greenwood
Hopkins
Lakeville
Lauderdale
Lilydale
Long Lake
Maple Plain**

**Maplewood
Medicine Lake
Medina
Mendota
Minneapolis
Minnetonka
Minnetonka Beach
Mound
New Brighton
New Hope
Newport
Oakdale
Orono
Osseo
Plymouth
Roseville
Savage
Shoreview
South St. Paul**

**St. Anthony
St. Bonifacius
St. Louis Park
St. Paul
Stillwater
Tonka Bay
Vadnais Heights
Waconia
West St. Paul**



Wastewater System Plan

2011 Remaining I/I Community Work Plans

Arden Hills
Bayport
Chanhassen*
Columbia Heights
Eagan
Eden Prairie*
Excelsior
Hopkins*
Lilydale

Long Lake
Orono
Oakdale
Newport
Minnetonka Beach
Minnetonka
Medicine Lake

Maplewood
St. Louis Park
St. Paul
Stillwater
Vadnais Heights*
Waconia
West St. Paul

Shaded communities anticipated removal after 2010 work documentation submitted.

Underlined communities granted extension under 25% cap provision

*** Four communities anticipate using 1-year extension to complete work**



Wastewater System Plan On-going I/I Program

2013 Regional On-going I/I Program:

2009 – Established community task force

2010 – Task force recommended “On-going” I/I Program”

2010 – September Council amends WRMP to:

Include on-going I/I program

Extend current program additional year (2012)

2012 – Community peak flow measurement begins

2013 – On-going: Community work plans



Questions

Informational Contacts:

Judy Sventek, Manager, Water Resources Assessment

judy.sventek@metc.state.mn.us

651-602-1156

Kyle Colvin, Assistant Manager, Engineering Services

kyle.colvin@metc.state.mn.us

651-602-1151