

Metropolitan Council

Clean Water Fund

February 9, 2011

**Keith Buttleman
Assistant General Manager,
Environmental Quality Assurance**



**CLEAN
WATER
LAND &
LEGACY
AMENDMENT**

Clean Water, Land and Legacy Amendment

0.375% increase in Sales and Use Tax

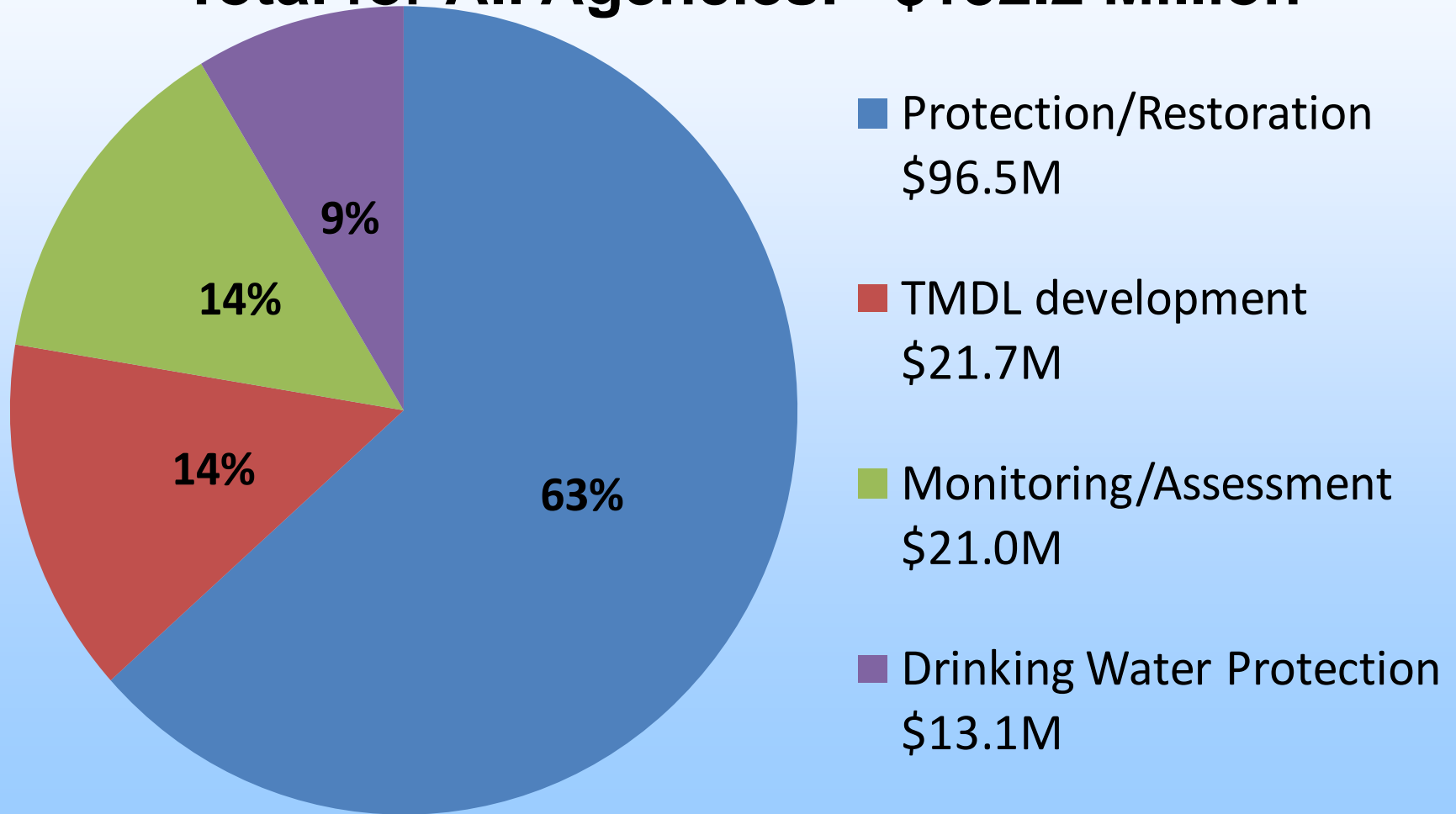
- **33% Outdoor Heritage Fund** (approximately \$91 million in FY 2011);
- **33% Clean Water Fund** (approximately \$91 million in FY 2011);
- **14.25% Parks and Trails Fund** (approximately \$39 million in FY 2011);
- **19.75% Arts and Cultural Heritage Fund** (approximately \$54.5 million in FY 2011).

Metropolitan Council Clean Water Fund Allocations

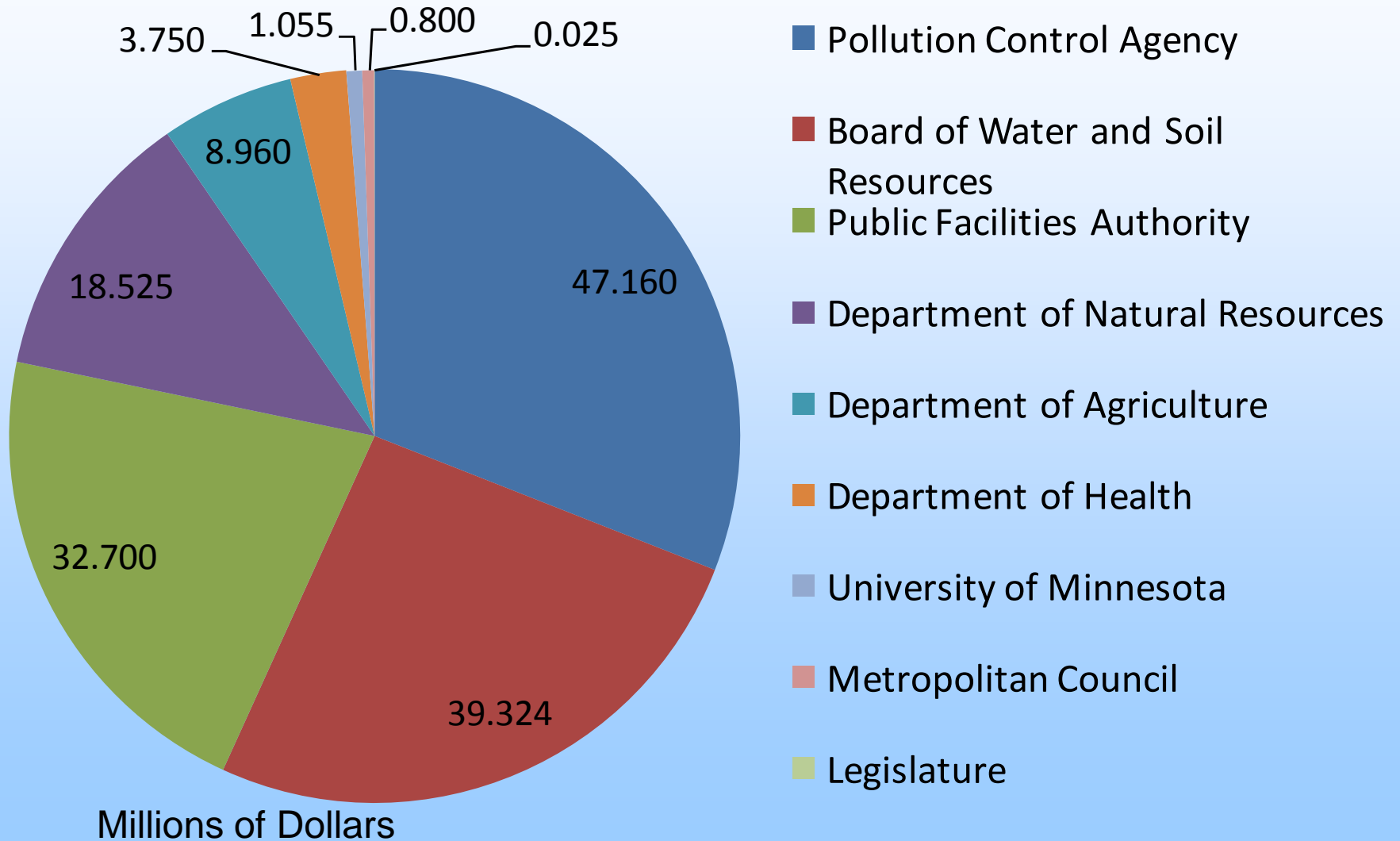
- **2009 Legislative Session**
 - Requested: \$938,000 for FY10-FY11
 - Allocated: \$400,000 for FY10
- **2010 Legislative Session**
 - Requested: \$500,000 for FY11
 - Allocated: \$400,000 for FY11
- **2011 Legislative Session**
 - Requested: \$1million for FY12-FY13

Clean Water Fund Allocations FY10-11

Total for All Agencies: \$152.2 Million



Clean Water Fund FY 10-11 Allocations by Agency



Metropolitan Council FY 2010 Activities

- **Geologic mapping and assessment**
- **Evaluation of connection of surface water and groundwater**
- **Local assessment: East Bethel**
- **Development of water conservation planning tools**

Metropolitan Council FY 2011 Activities

- **Local assessments**
 - Eastern Carver County (Seminary Fen)
 - Southern Washington County (Valley Branch Trout Stream)
- **Stormwater reuse feasibility study**
- **Map aquifer vulnerability across region**
- **Map groundwater contaminant plumes**

Clean Water Fund Request

\$1 million for FY12-13

- **Local Assessments - \$300,000**
- **Hydrogeologic Studies - \$200,000**
- **Water Use and Conservation - \$250,000**
- **Regional Groundwater Model Optimization and Application - \$250,000**

Metropolitan Council

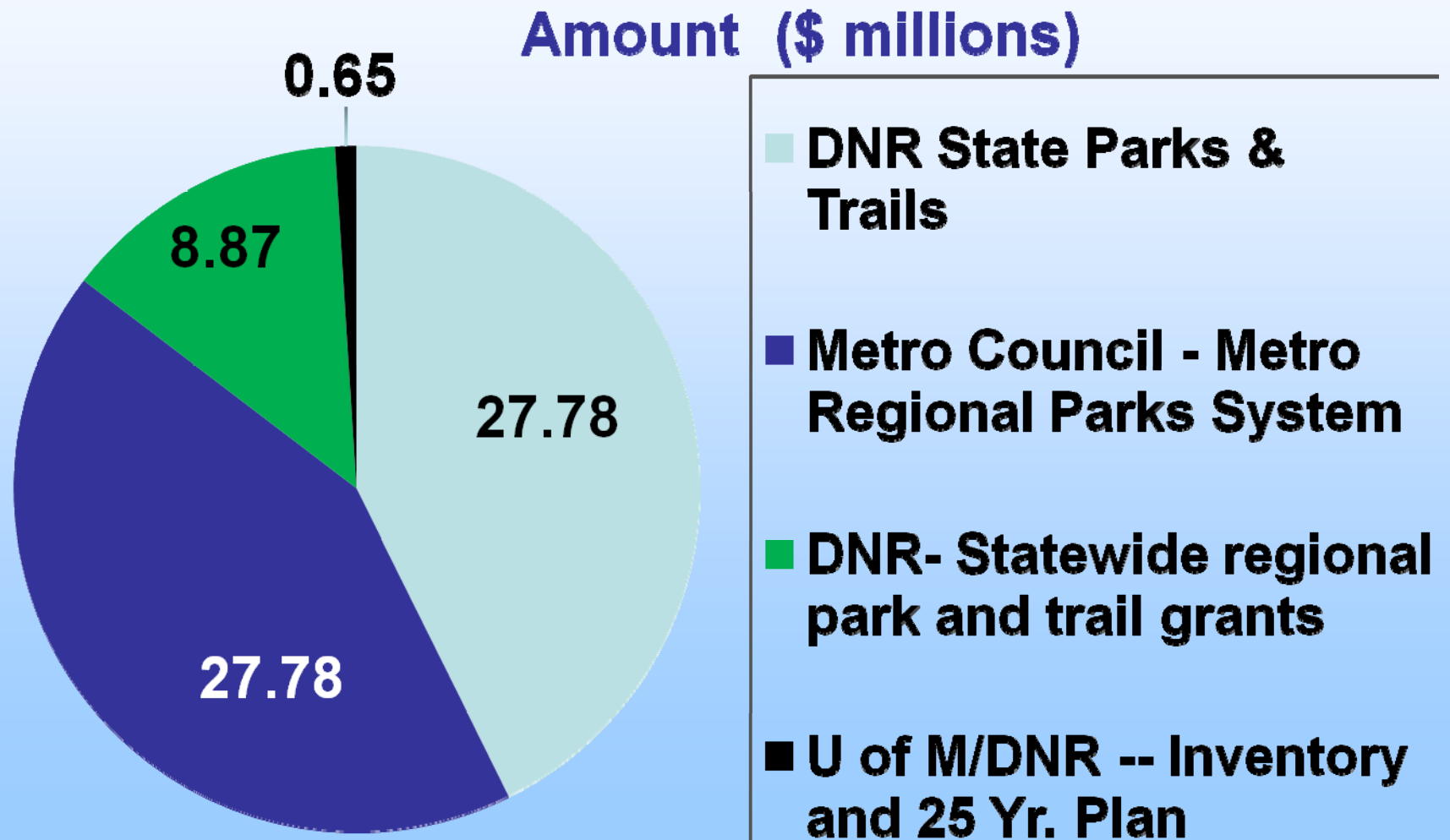
Parks & Trails Fund



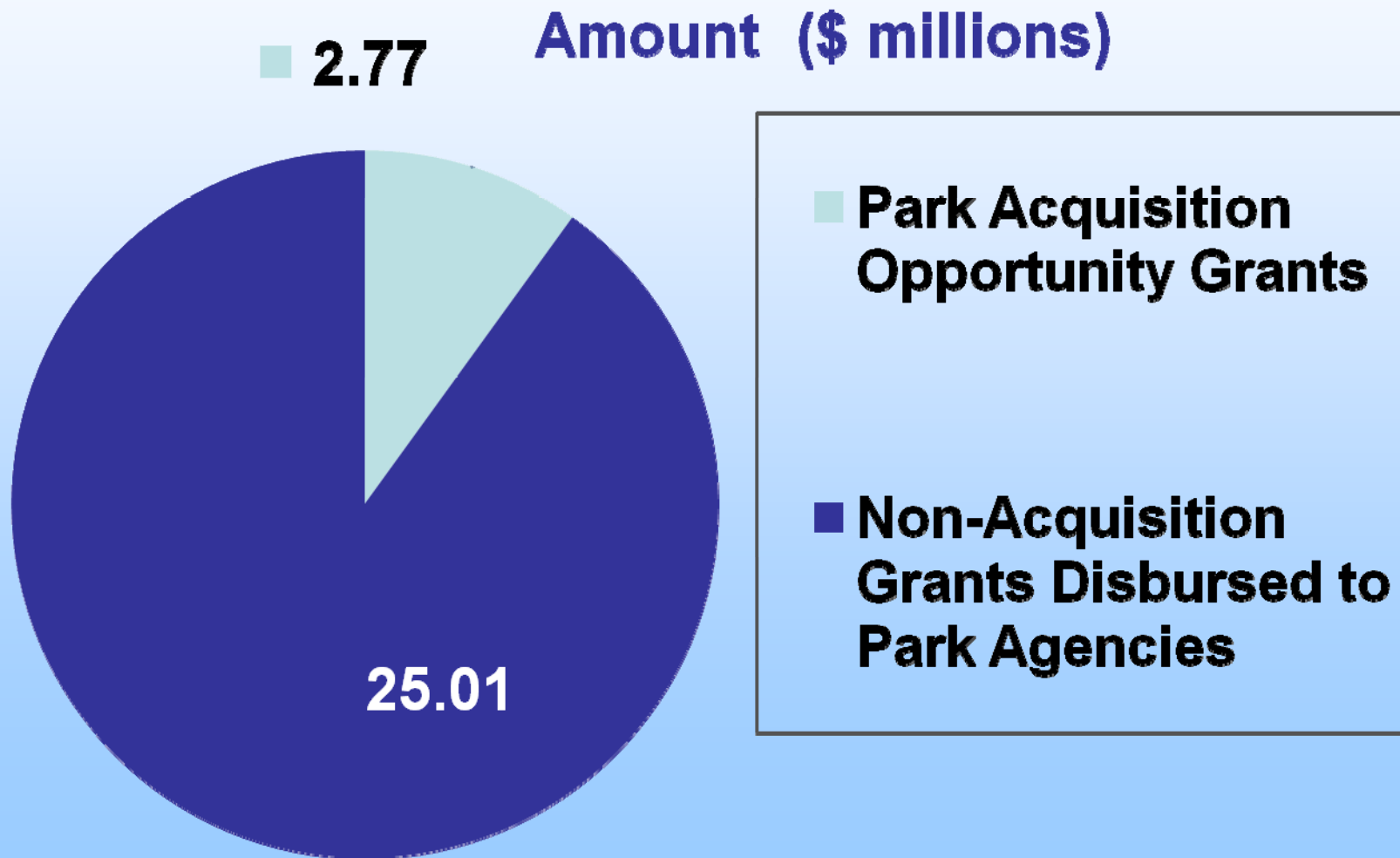
**CLEAN
WATER
LAND &
LEGACY
AMENDMENT**

**Arne Stefferud
Planning Analyst-Parks,
Community Development Division**

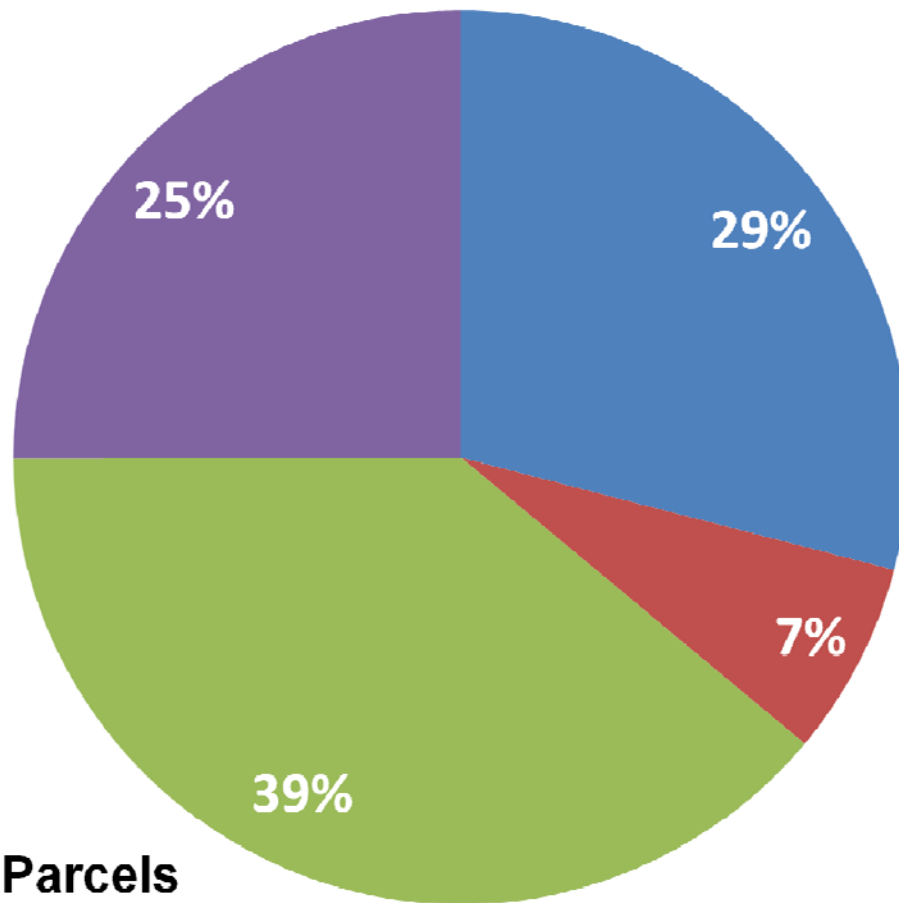
Parks & Trails Fund Appropriation



FY '10-11 Appropriation to Metro Regional Park System



Park Acquisition Grants from FY 2010-11 Parks & Trails Fund



■ FY 2010-11 Parks and Trails Legacy Fund (\$1.96 million)

■ Env. & Natural Resources Trust Fund (\$445,000)

■ Metro Council bond match to State Funds (\$2.6 million)

■ 25% Contribution by Park Agency (\$1.66 million)

7 Parcels

53 Acres \$6.67 million total cost



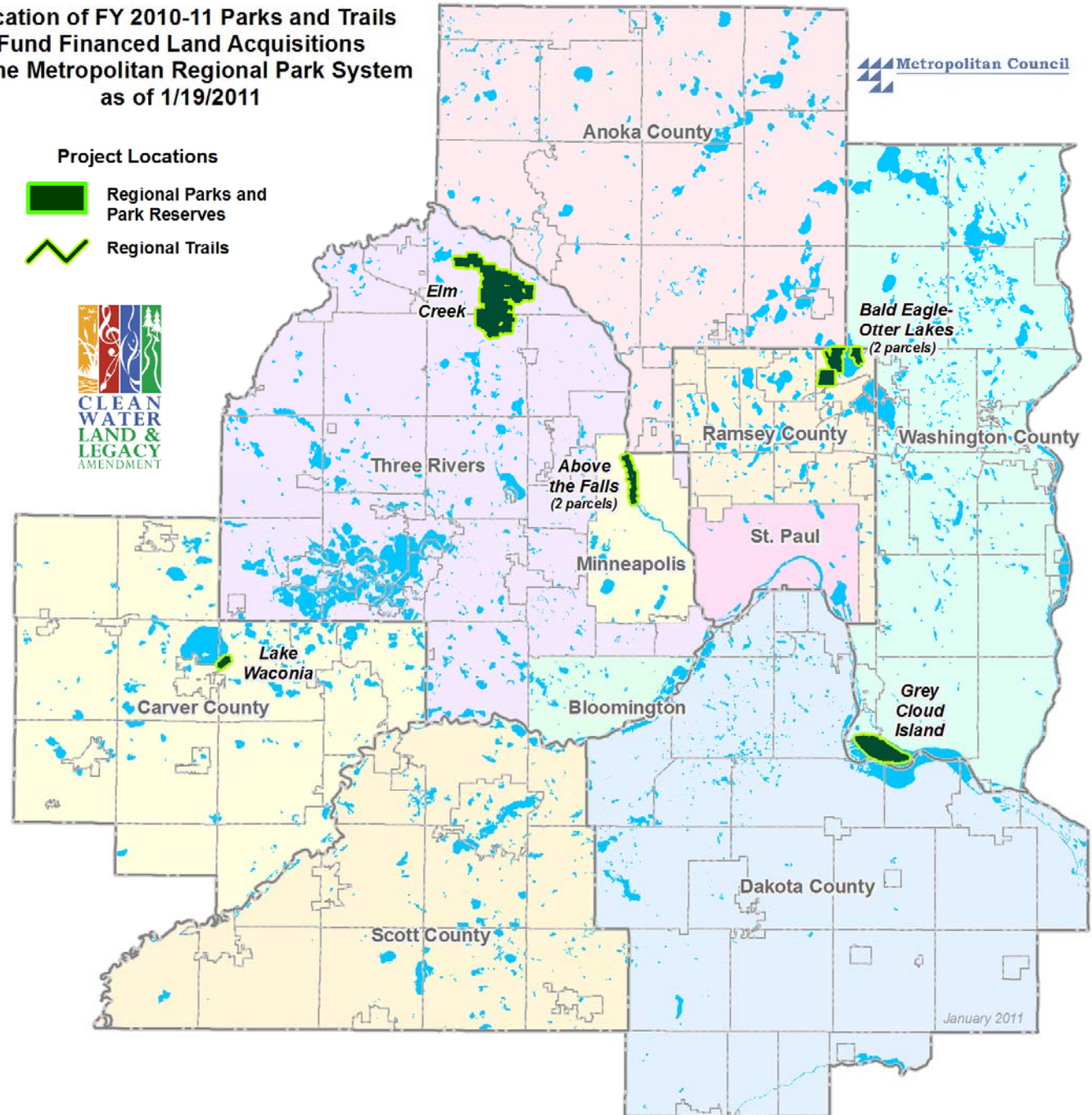
CLEAN WATER LAND & LEGACY AMENDMENT

Location of FY 2010-11 Parks and Trails Fund Financed Land Acquisitions for the Metropolitan Regional Park System as of 1/19/2011



Project Locations

-  Regional Parks and Park Reserves
-  Regional Trails



January 2011

Formula for Metro Regional Park Agency Share

- **Population of Park Agency Jurisdiction (35%)**
- **Total Visits (20%)**
- **Operations Expenses (20%)**
- **Non-local Visits (15%)**
- **Land Managed (10%)**



Metro Regional Park Agency Share

(\$ millions)

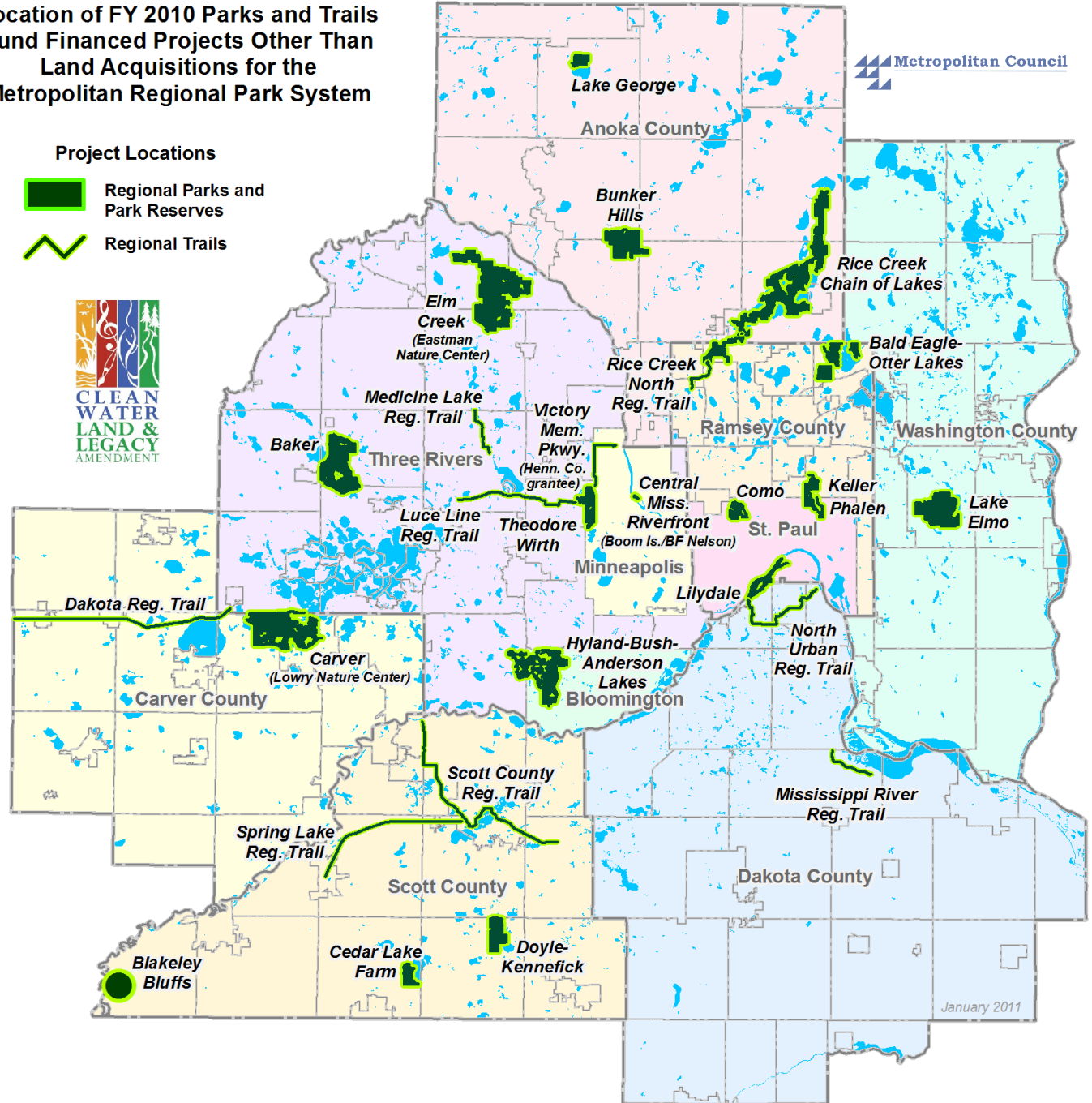
Anoka County	Bloomington	Carver County	Dakota County	3 Rivers Park District
\$ 2.43	\$ 0.43	\$ 0.45	\$ 1.99	\$ 5.86
Mpls. Park & Rec. Board	Ramsey County	St. Paul	Scott County	Washington County
\$ 5.91	\$ 2.14	\$ 3.88	\$ 0.54	\$ 1.31



CLEAN WATER LAND & LEGACY AMENDMENT

Location of FY 2010 Parks and Trails Fund Financed Projects Other Than Land Acquisitions for the Metropolitan Regional Park System



- Project Locations**
-  Regional Parks and Park Reserves
 -  Regional Trails

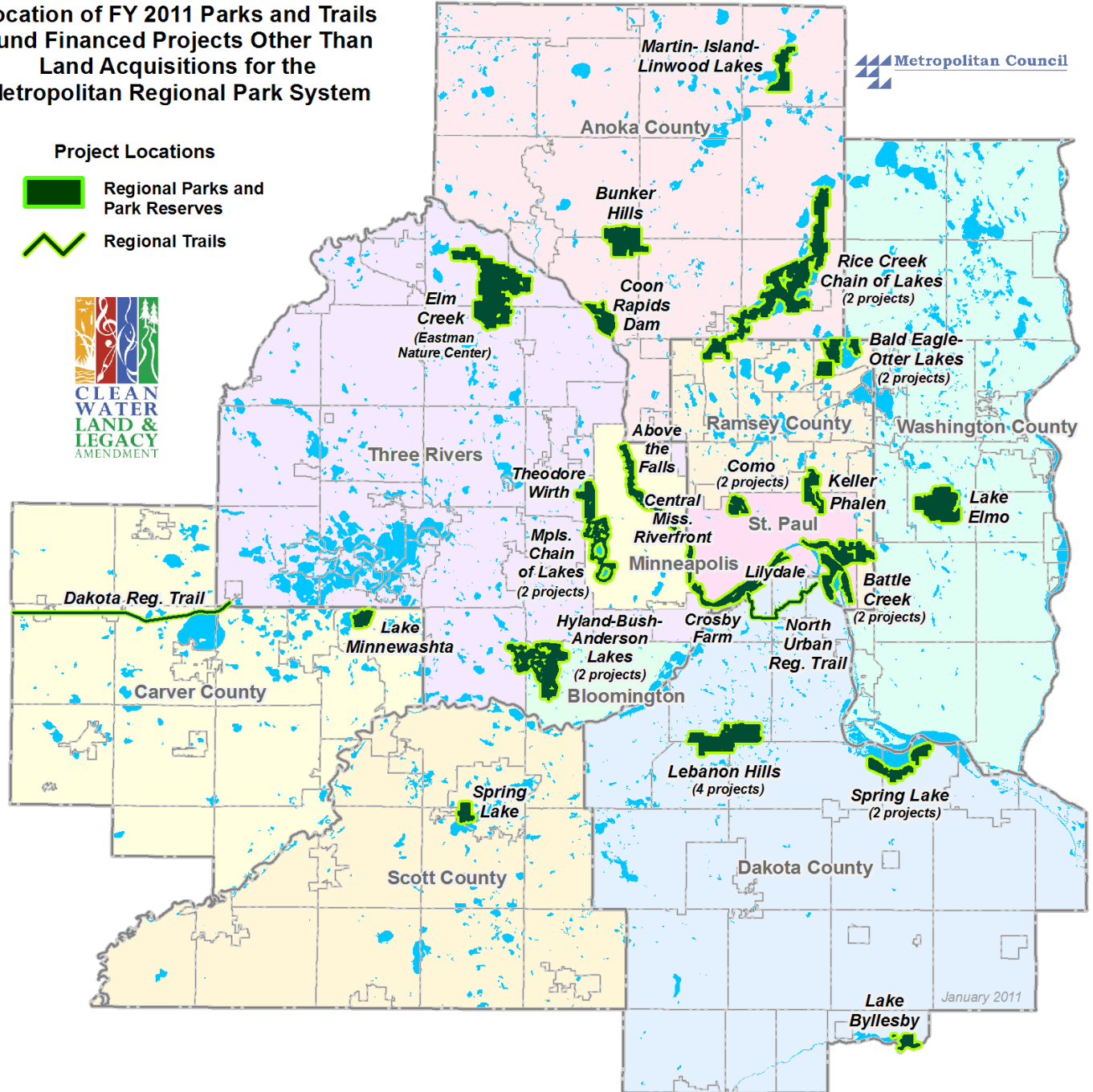




CLEAN WATER LAND & LEGACY AMENDMENT

Location of FY 2011 Parks and Trails Fund Financed Projects Other Than Land Acquisitions for the Metropolitan Regional Park System

- Project Locations**
-  Regional Parks and Park Reserves
 -  Regional Trails



Parks & Trail Fund Request

\$16.163 million for FY '12 -13 each year

