



Report on Long-Term Wastewater Service For Northern Anoka County

Presented to the Metropolitan Council

May 9, 2007

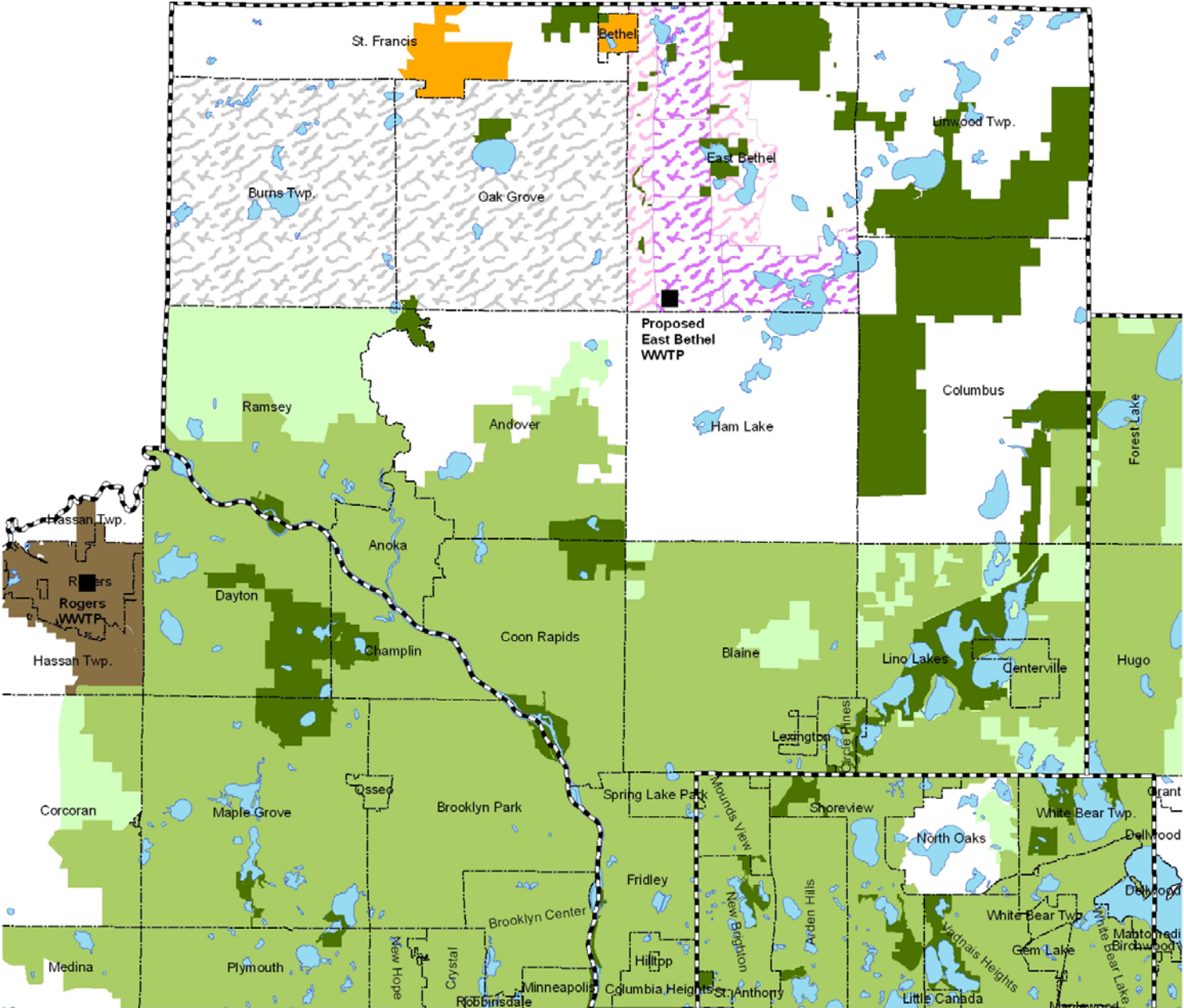
**Bryce Pickart,
Assistant General Manager, Technical Services**

A Clean Water Agency

Regional Wastewater System Long-Term Service Areas



- County Boundary
- Community Boundary
- MCES Treatment Plant
- Regional Parks
- Lakes and Rivers
- Rural Center
- Metro
- Potential Metro
- Rogers
- Potential Sewered Development by WWTP with Rapid Infiltration
- Proposed East Bethel
- Potential East Bethel



East Bethel



- **Policy (Approved December, 2006)**

- Rural Growth Center
- Revised Forecasts

- **Comp Plan Update**

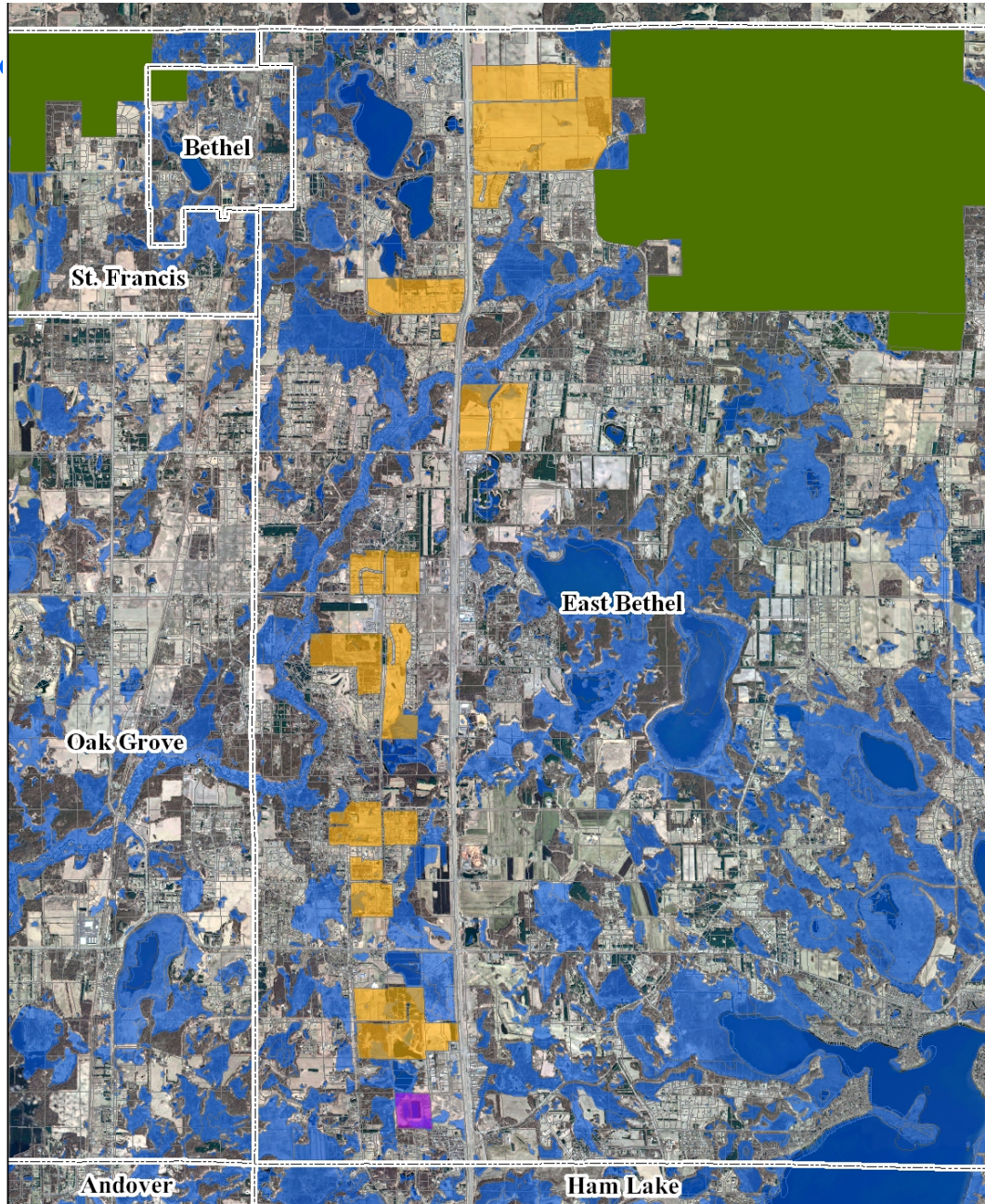
- Complete: April 26
- Council Action: June

- **Wastewater Service**

- Evaluating WWTP Site and Rapid Infiltration Sites



- Community Boundary
- National Wetlands Inventory
- Regional/Local Parks
- Proposed WWTP
- Potential RIB Sites



Map of East Bethel



Criteria for Potential Sewered Development



- **Wastewater System Plan
(Proposed East Bethel WWTP)**
 - Capacity
 - Proximity
- **Transportation System
(Hwy. 65, Viking Blvd, Hanson Blvd)**
- **Natural Resources Preservation
(Surface Waters, Wetlands, Parks)**
- **Contiguous Undeveloped Land Parcels
of \geq 10-acre size**

Ham Lake



■ Policy

- Rural Residential (DF)
- Unsewered (WRMPP)

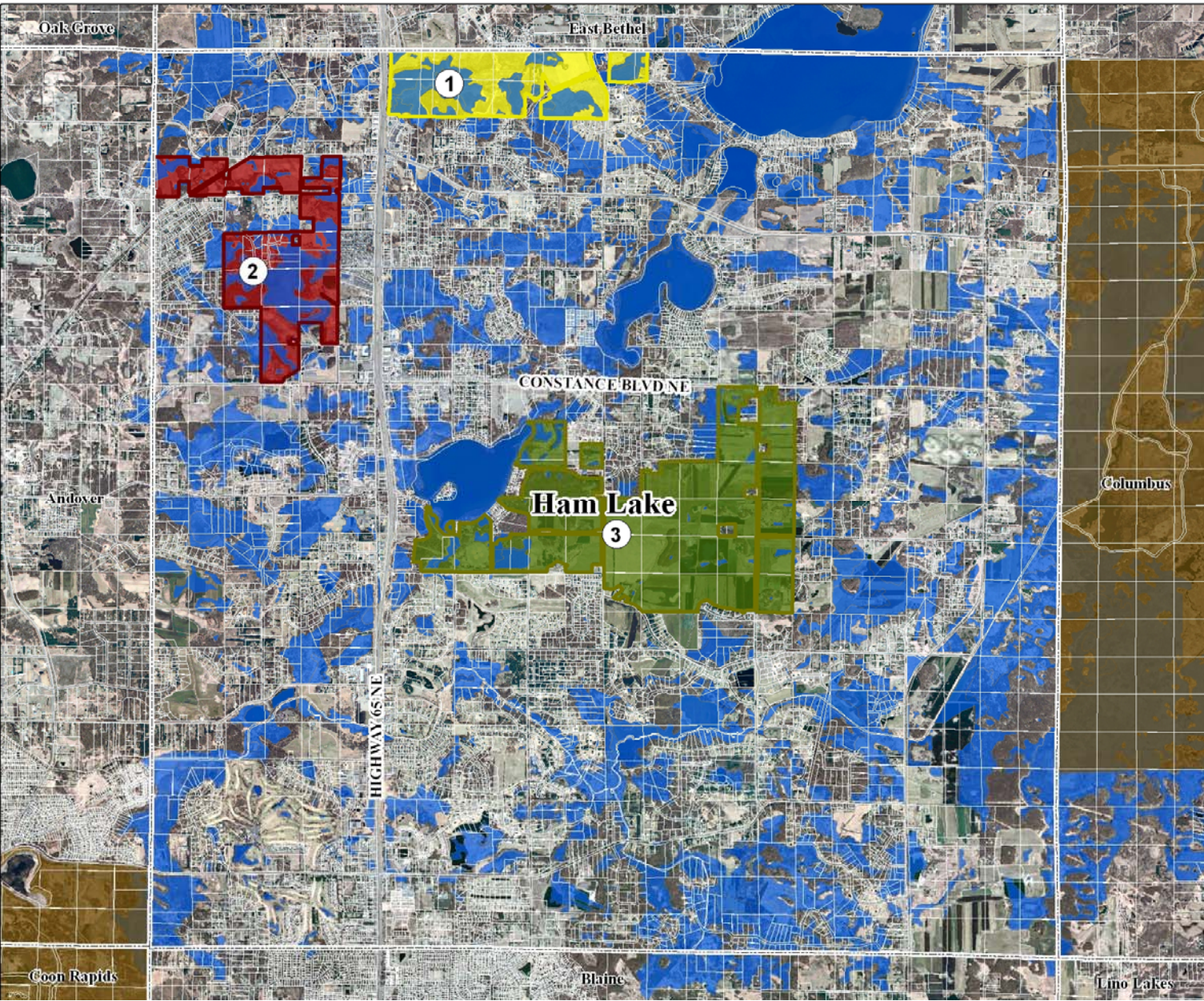
■ Wastewater Services

- Limited Potential Service Area
- Service to Proposed East Bethel WWTP
- Presentation to City 2/21/07

■ Comp Plan Update

- City has solicited proposals from Planning Firms

Ham Lake



- Community Boundary
- National Wetlands Inventory
- Regional/Local Parks
- AREA 1
- AREA 2
- AREA 3



Oak Grove



■ Policy

- Diversified Rural (DF)
- Potential Wastewater Service (WRMPP)

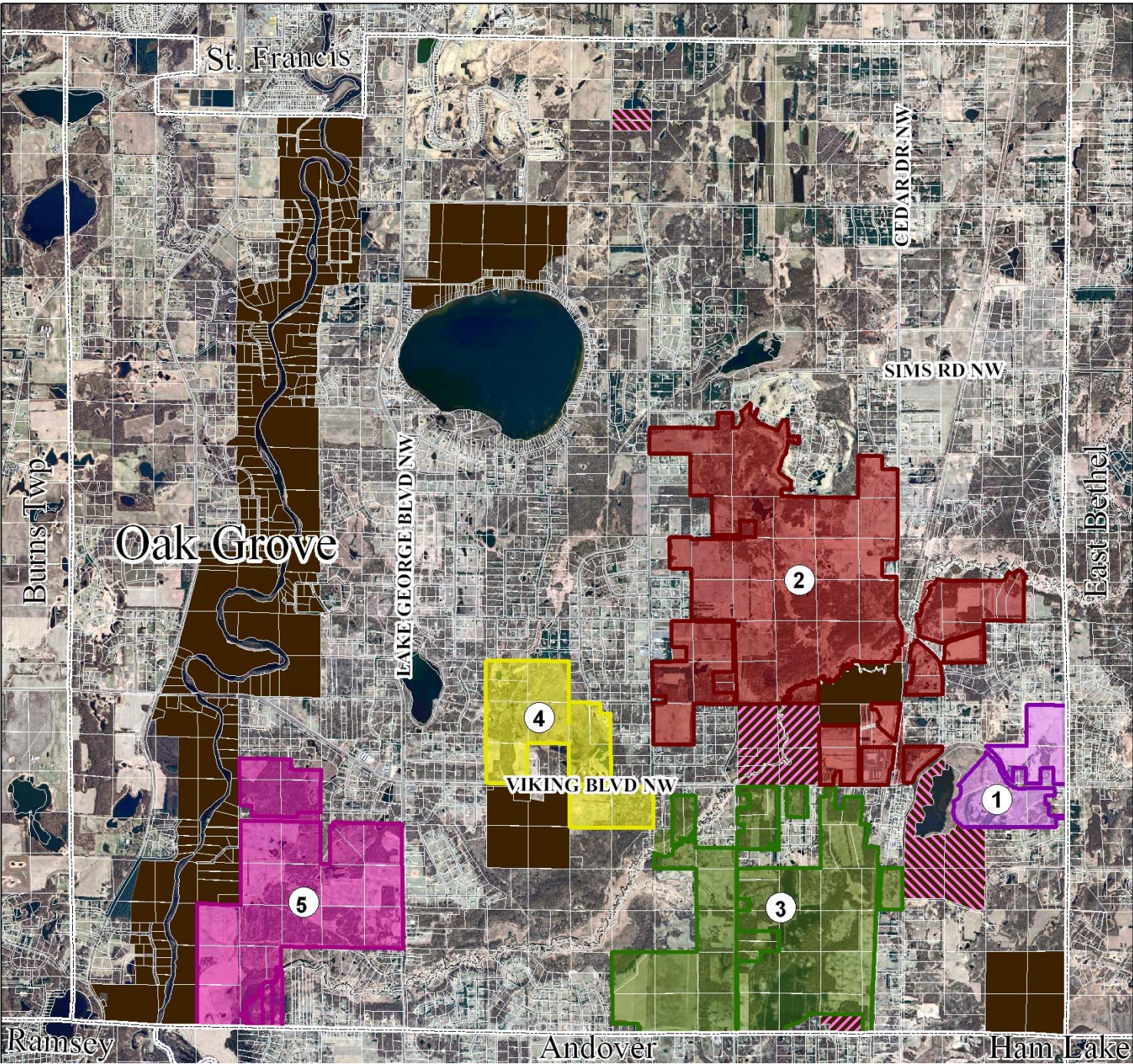
■ Wastewater Services

- Limited Potential Service Area
- Service to Proposed East Bethel WWTP
- Presentation to City 3/14/07

■ Comp Plan Update

- City has initiated CPU
- City has two Amendments pending Metro Council Action
- City Council continues to prefer Rural Residential

Map of Oak Grove



- COMMUNITY BOUNDARY
- STATE / WILDLIFE / PARK
- AREA 1
- AREA 2
- AREA 3
- AREA 4
- AREA 5



Andover



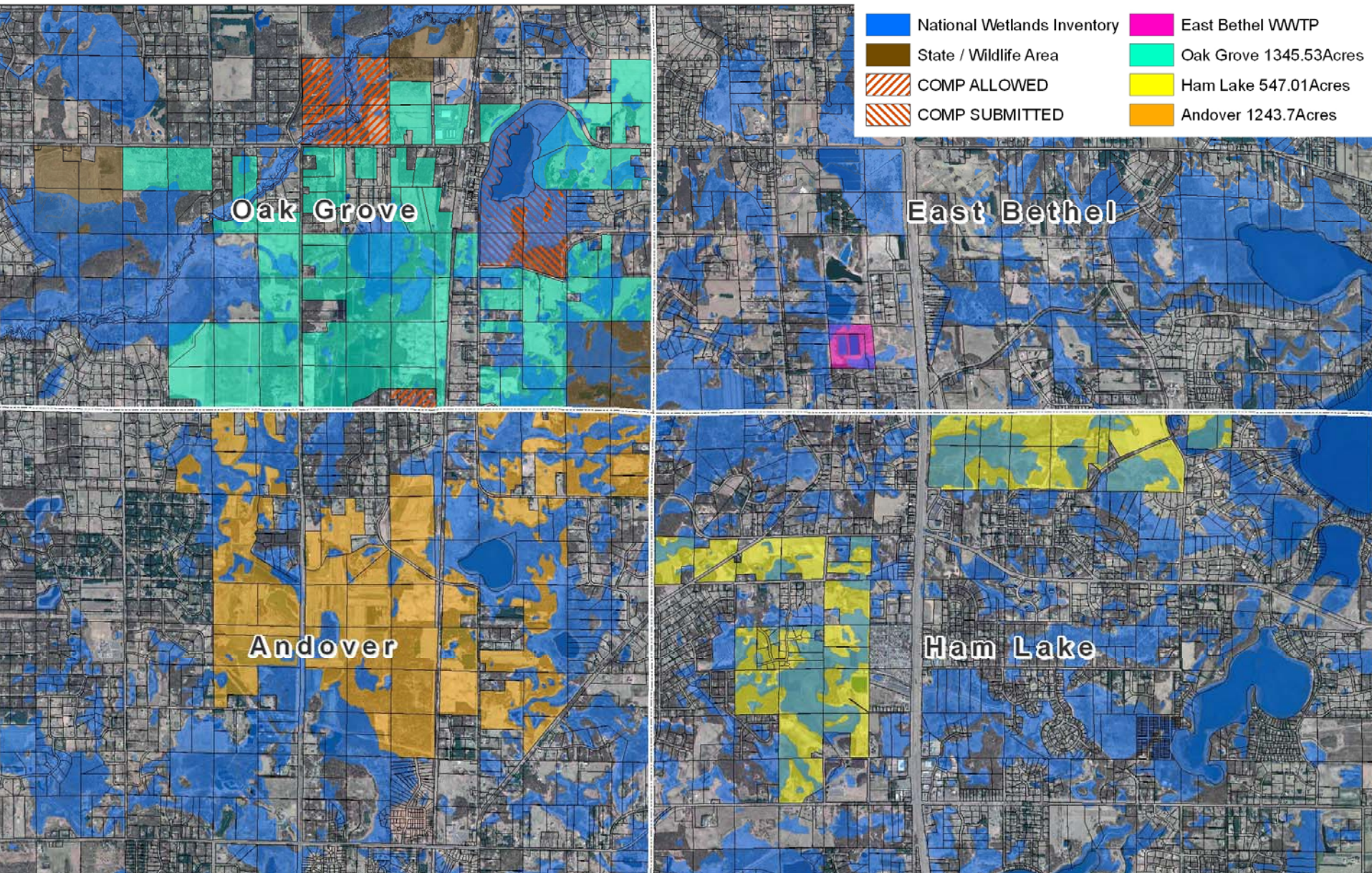
■ Policy

- Developing and Rural Residential (DF)
- Potential Wastewater Service in portion of Rural Residential (WRMPP)

■ Wastewater Services

- MDS has capacity to serve additional 1,000 acres to Metro Plant
- City resists because it lacks trunk sewer capacity to reach MCES Coon Rapids Int.
- Northeast area could be served to East Bethel WWTP

Potential Long-Term Wastewater Service Area for East Bethel



Policy: Development Framework



■ Amend Planning Area Designations?

Oak Grove: From Diversified Rural to part Rural Residential?

Ham Lake: From Rural Residential to part Diversified Rural?

■ Recommendations

No – Wait for City Request



Policy: Water Policy Plan



■ Amend Long-Term Wastewater Service Area Map?

Oak Grove: From potential of entire City to potential service area of proposed East Bethel WWTP?

Ham Lake: Add potential service area of proposed East Bethel WWTP?

■ Recommendations

Oak Grove: Yes (refines Wastewater System Plan; Comp Plan Amendments force issue)

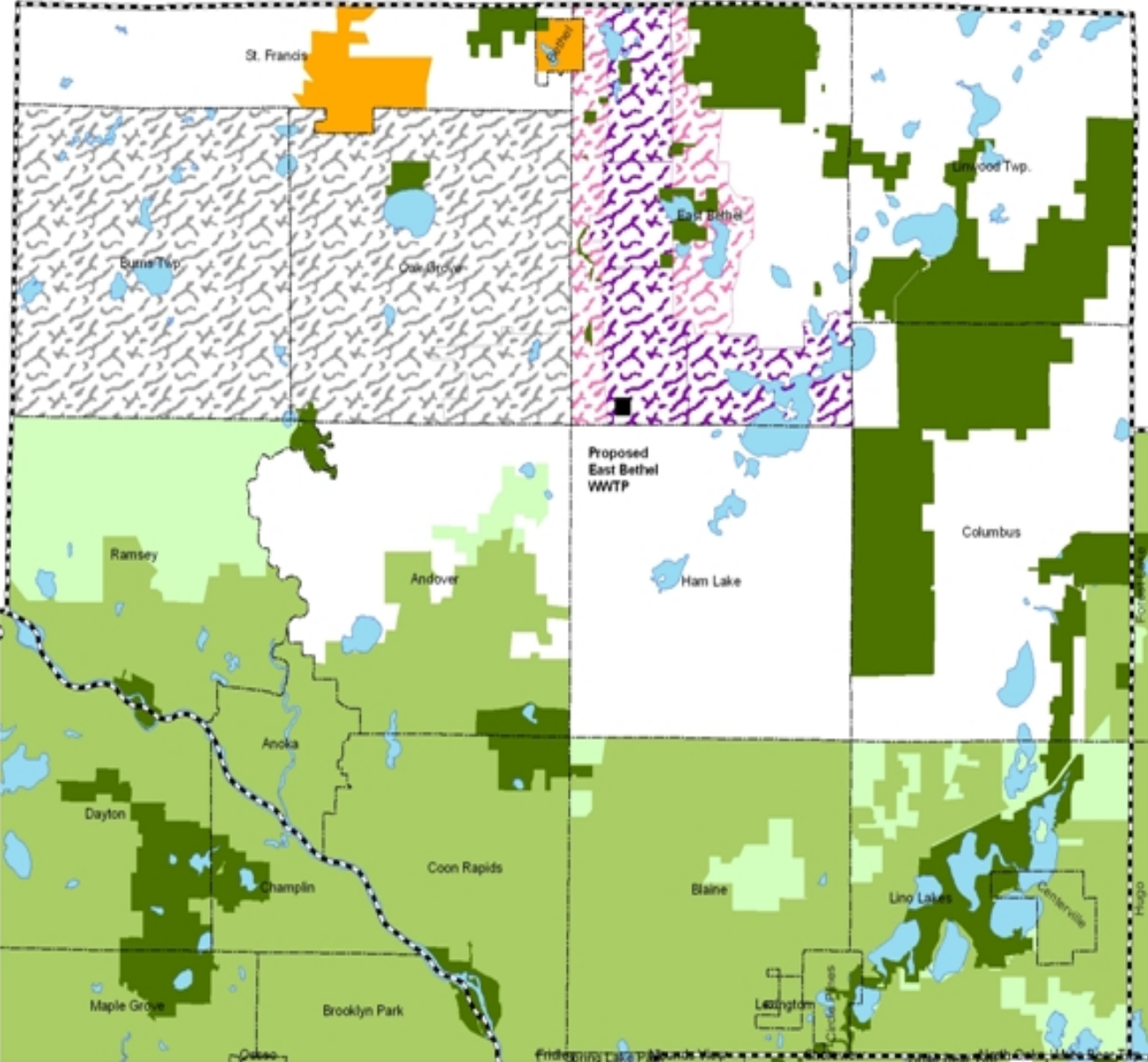
Ham Lake: No (limited potential; Hwy 65 businesses and Coon Lake needs may drive sewer service request)



North Anoka County Long-Term Service Areas



1 inch equals 2 miles

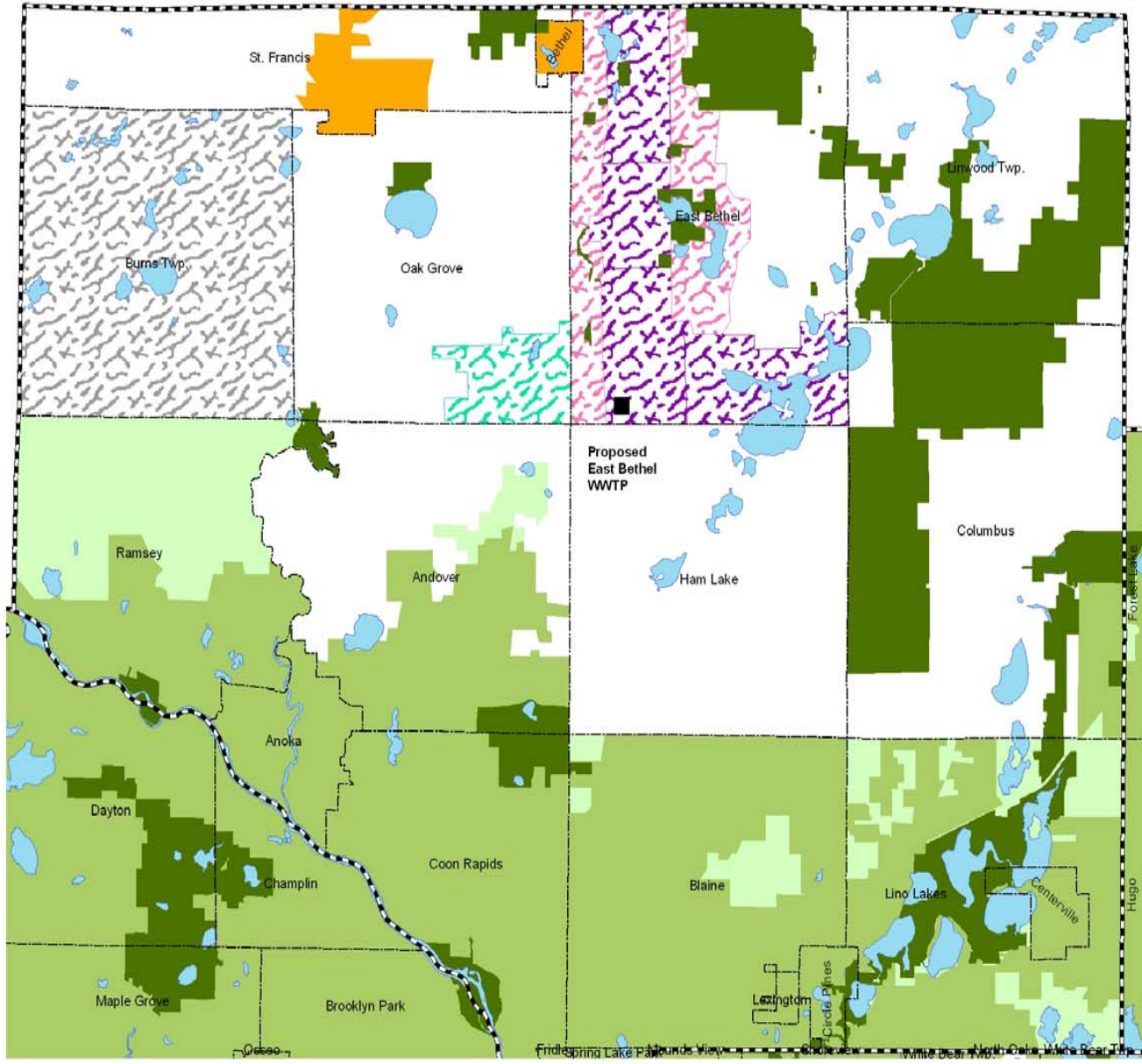


- County Boundary
- Community Boundary
- MCES Treatment Plant
- Regional Parks
- Lakes and Rivers
- Rural Center
- Metro
- Potential Metro
- Wastewater Treatment and Rapid Infiltration**
- Proposed East Bethel
- Potential East Bethel
- Potential Treatment with RIB

North Anoka County Long-Term Service Areas



1 inch equals 2 miles



- County Boundary
- Community Boundary
- MCES Treatment Plant
- Regional Parks
- Lakes and Rivers
- Rural Center
- Metro
- Potential Metro
- Wastewater Treatment and Rapid Infiltration**
- Proposed East Bethel
- Potential East Bethel
- Potential Oak Grove
- Potential Burns Twp.

Next Steps



- **Meet with Ham Lake and Oak Grove**
- **Proceed with Amendment to Water Resources Management Policy Plan**
- **Potential Schedule**
 - **Authorize Public Hearing** **June 13**
 - **Conduct Public Hearing** **July 31**
 - **Adopt Amendment** **August 22**

