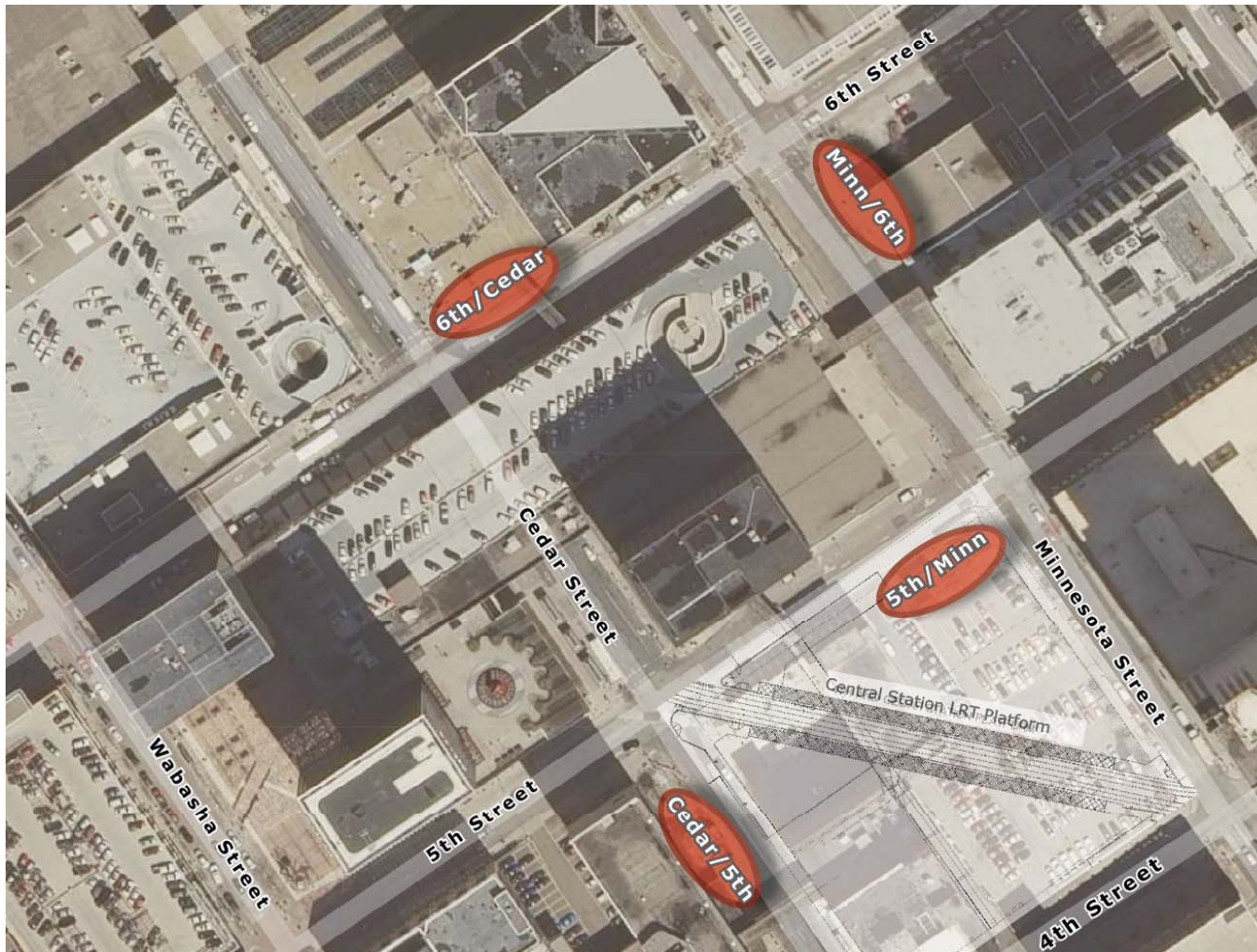


# Downtown St. Paul Facility Improvements



**Transportation Committee Information Item**

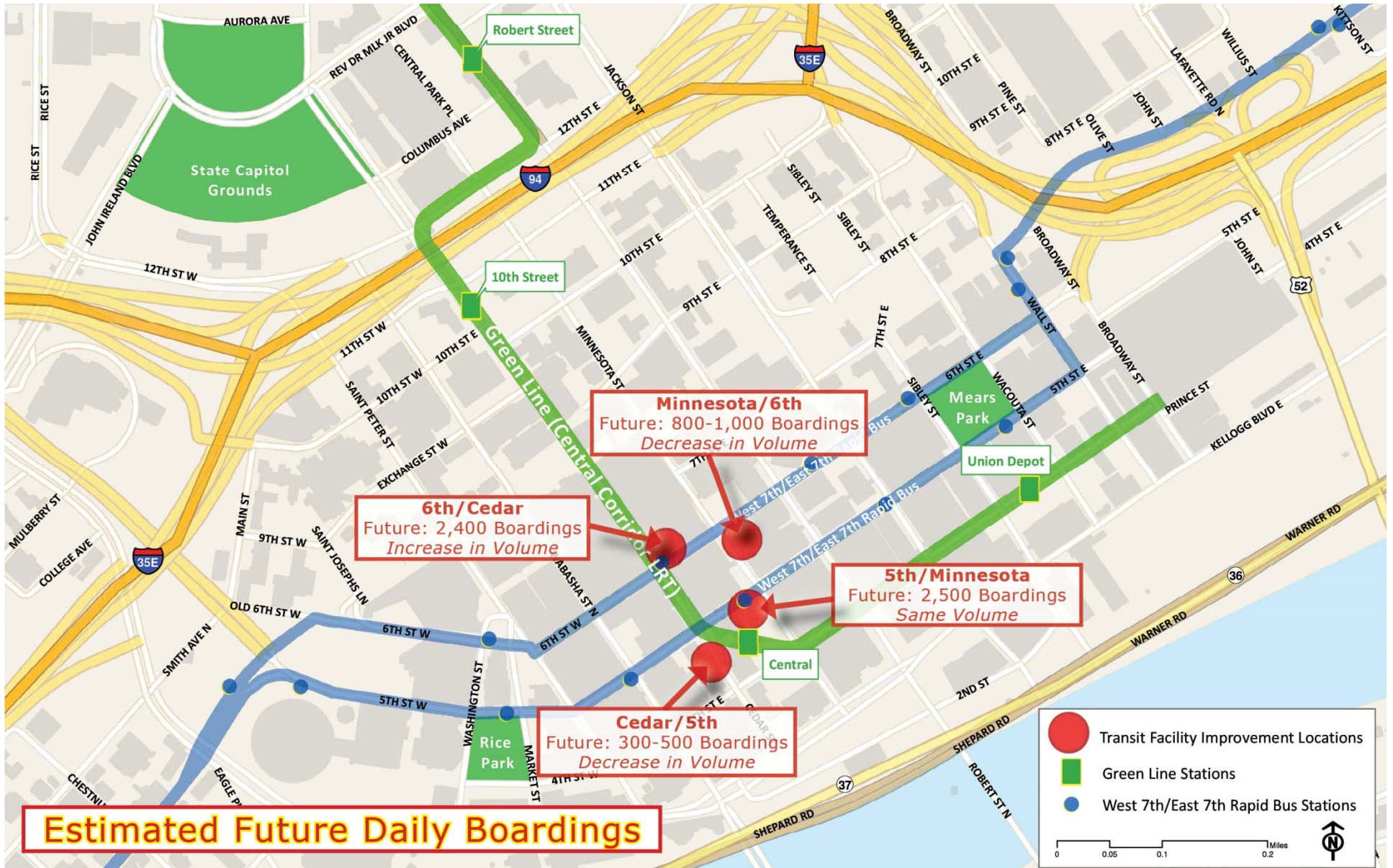
**December 10, 2012**

**Julie Quinn, Planner, Engineering & Facilities**





# Project Location/Context



# Project Purpose, Scope, & Funding



## Project Purpose:

- Upgrade the Physical Environment of the Bus Stops
- Enhance Intermodal Connections (Bus, LRT, Bike, Pedestrian)
- Improve Safety & Security

## Grant Elements/Project Scope:

- ✓ Transit Shelter/Waiting Area Improvements
- ✓ Safety & Security Upgrades
- ✓ Streetscape Elements
  - ✓ Lighting
  - ✓ Benches
  - ✓ Plantings
  - ✓ Public Art
  - ✓ Bicycle Amenities
- ✓ Signage (Real-Time, Transit & Wayfinding)
- ✓ Vertical Connection Adjacent to Central LRT Station (Partial Funding)

## Project Funding:

\$2,600,000	Federal Bus Livability Grant
+ \$650,000	Local Match
<hr/>	
<b>\$3,250,000</b>	<b>Total</b>

## Downtown St. Paul Stakeholder Task Force

*Provide input on schematic design and detailed design*

- City of St. Paul
- St. Paul Smart Trips
- BOMA Saint Paul
- CapitolRiver Council
- Alliance Bank
- Commonwealth Properties
- Saint Paul Area Chamber of Commerce
- Saint Paul Riverfront Corporation
- Metro Transit Police
- U.S. Bank Building/Cassidy Turley
- Town Square/Sentinel Real Estate Corporation
- Advocating Change Together
- Kellogg Square (Downtown St. Paul Resident)

## City of St. Paul Staff

*Advise from Project Scoping through Implementation*

- Planning & Economic Development
- Public Works
- Parks & Recreation
- Heritage Preservation
- City Artist in Residence

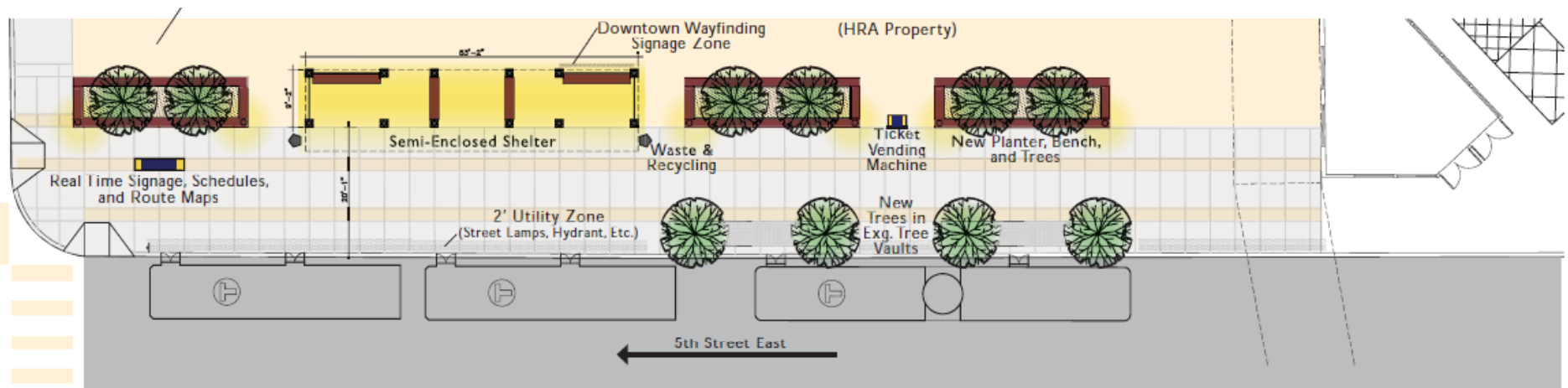
## Other Downtown Stakeholders

*Will be Engaged Individually during Detailed Design*

- Pioneer Press
- Ecolab
- St. Paul Athletic Club
- St. Paul Police



# 5<sup>th</sup> & Minnesota St. Preferred Concept

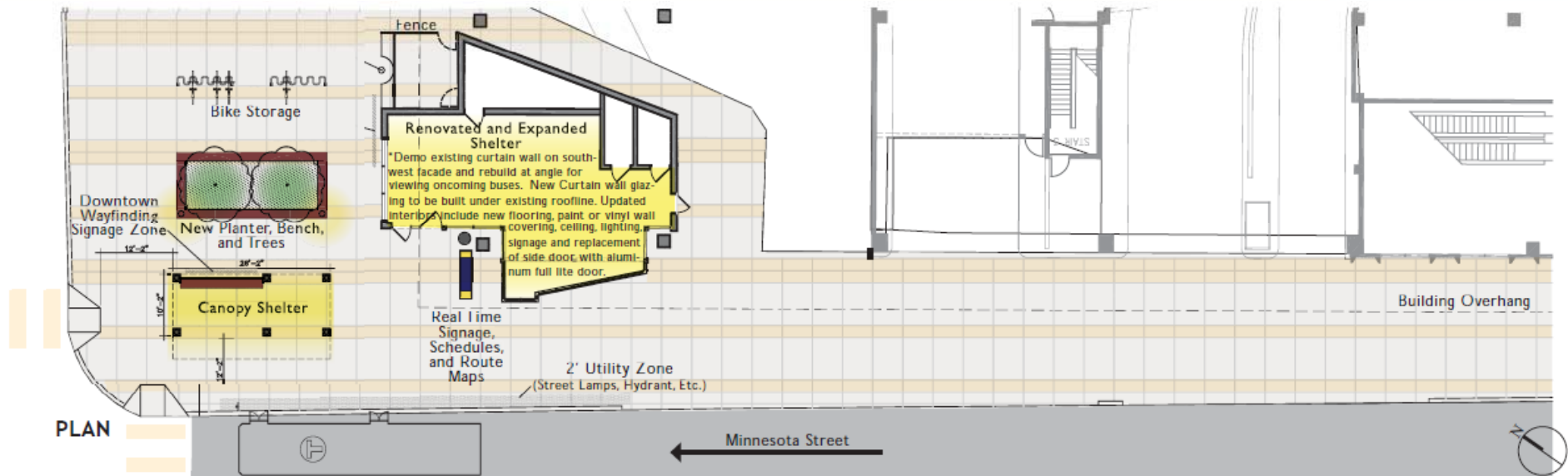


PERSPECTIVE LOOKING SOUTH TOWARDS 5TH ST. STATION

## Key Elements:

- ✓ **Semi-Enclosed, Heated Shelter**
  - ✓ Approximately 700 square feet
- ✓ **Shelter Setback on HRA Property**
  - ✓ Approximately 20 feet of clear sidewalk
- ✓ **Security Cameras & Lighting**
- ✓ **Real-Time Signs**
- ✓ **Ticket Vending Machine**

# Minnesota & 6<sup>th</sup> St. Preferred Concept



Proposed

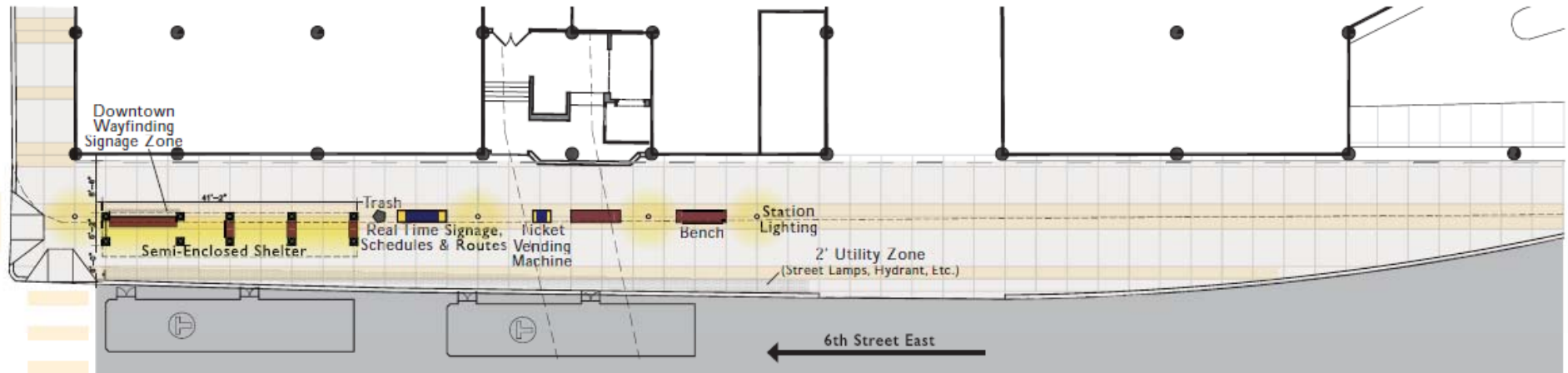


PERSPECTIVE LOOKING SOUTHEAST TOWARDS MINNESOTA ST. STATION

## Key Elements:

- ✓ Renovated Interior Waiting Area
  - ✓ Approximately 885 square feet
  - ✓ Window/Visibility Improvements
- ✓ Outdoor Plaza Improvements
  - ✓ Possible Addition of Canopy Shelter
- ✓ Security Cameras & Lighting
- ✓ Real-Time Signs

# 6<sup>th</sup> & Cedar St. Preferred Concept



PLAN



PERSPECTIVE LOOKING NORTHEAST TOWARDS 6TH STREET STATION WITH MINNESOTA STREET STATION IN DISTANCE.

PERSPECTIVE LOOKING SOUTHWEST TOWARDS THE 6TH ST. STATION.



## Key Elements:

- ✓ Semi-Enclosed, Heated Shelter on Sidewalk
  - ✓ Approximately 300 square feet
- ✓ Sidewalk/Curb Extension into Traffic Lane
  - ✓ Approximately 14½ feet of sidewalk
- ✓ Security Cameras & Lighting
- ✓ Real-Time Signs
- ✓ Ticket Vending Machine





# Vertical Connection Rendering



Design Development Rendering  
(Design Development Process Led by City of Saint Paul)



## Project Delivery:

- ✓ Designer Selection (December 2012/January 2013)
- ✓ Design (January – April 2013)
- ✓ Construction (July – October/November 2013)
- ✓ Complete (2014 - in time for Green Line Opening)
- ✓ Ongoing Stakeholder Outreach

## Anticipated Met Council Actions

- Easement/Agreement for St. Paul HRA Property
- Construction Contract Authorization

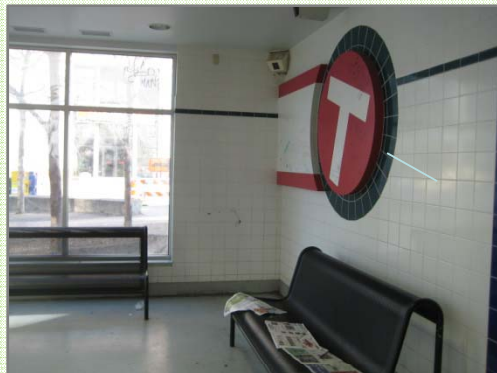


# Existing Conditions



5<sup>th</sup> & Minnesota Streets

6<sup>th</sup> & Cedar Streets



Minnesota & 6<sup>th</sup> Streets



Cedar & 5<sup>th</sup> Streets  
(Prior to June 2011)