



SOUTHWEST
Green Line LRT Extension

Transportation Committee Meeting

December 17, 2012



EDEN PRAIRIE | MINNETONKA | EDINA | HOPKINS | ST. LOUIS PARK | MINNEAPOLIS



SOUTHWEST
Green Line LRT Extension

Preliminary Engineering Consultant Contracts




EDEN PRAIRIE | MINNETONKA | EDINA | HOPKINS | ST. LOUIS PARK | MINNEAPOLIS

2


3

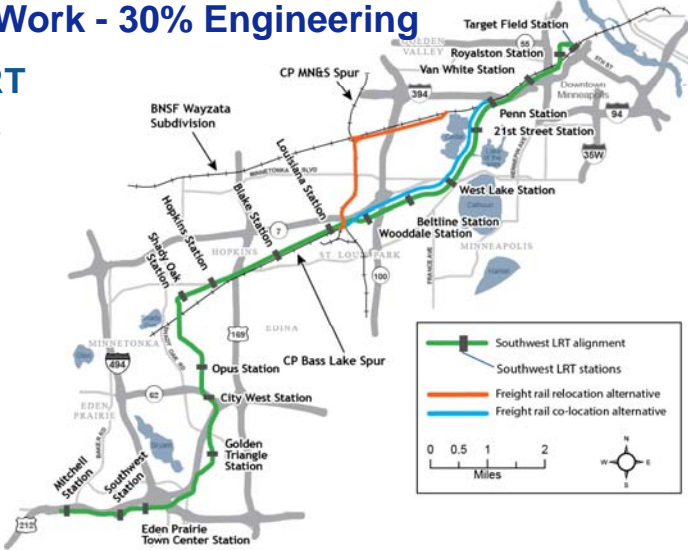
Council Actions at July 25, 2012 meeting Authorized the Regional Administrator to :

- Cancel procurement for Contract 11P173 for Engineering Services Consultant for SWLRT;
- Develop and issue new Requests for Proposals for Engineering Services Consultant(s) for developing engineering documents to 30% completion;
- Develop and issue a new Request for Proposals for an independent engineering peer review consultant tasked with review of contract deliverables generated by the Engineering Services Consultant(s).

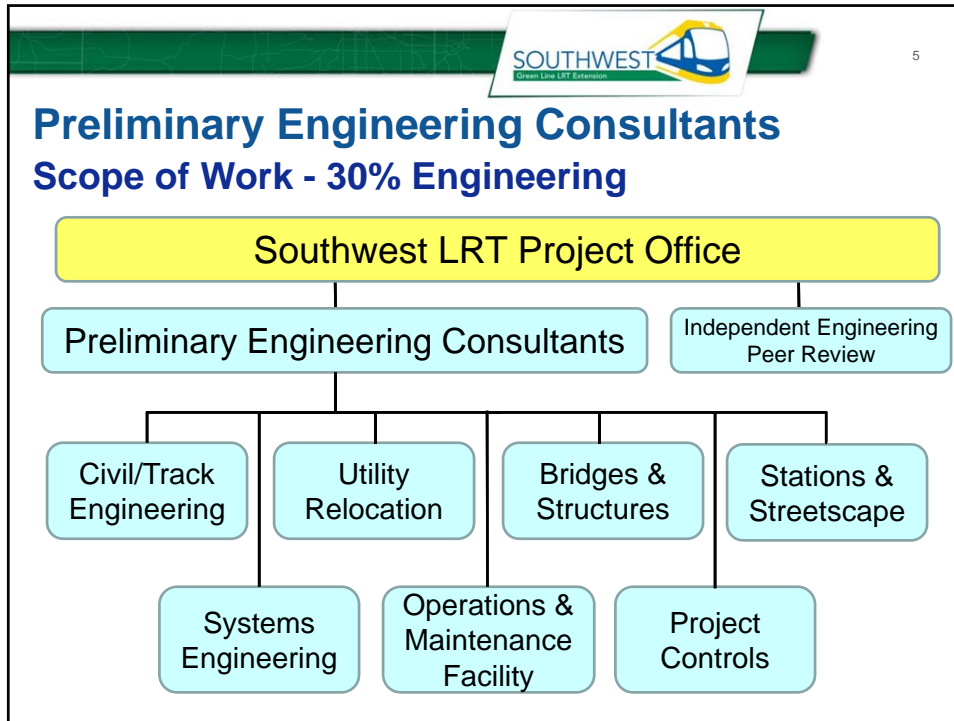

4

Preliminary Engineering Consultants Scope of Work - 30% Engineering

Full SWLRT Alignment



The map illustrates the proposed Southwest LRT alignment (green line) and freight rail alternatives (orange and blue lines) through the Minneapolis-St. Louis Park area. Key stations along the LRT alignment include Mitchell, Eden Prairie Town Center, Golden Triangle, City West, Opus, Hopkirk, Shady Oak, Blake, Louisa, Penn, 21st Street, West Lake, Wooddale, Beltline, and Target Field. The map also shows freight rail relocation alternatives (orange) and freight rail co-location alternatives (blue) near the CP MN&S Spur and CP Bass Lake Spur. Major roads like I-494, I-94, and I-35 are also indicated.



SOUTHWEST
Green Line LRT Extension

6

Preliminary Engineering Consultants Procurement Schedule

Major Milestones	Dates
Advertise RFPs	August 17, 2012
Hold pre-proposal conferences	September 6, 2012
Receive proposals	October 2, 2012
Interview proposers	Oct 30 – Nov 2, 2012
Conduct proposal evaluations/negotiations	Nov - Dec 2012
Award & sign contracts / Issue Notices-to-Proceed	Dec 2012/Jan 2013



7

Preliminary Engineering Consultants Procurement Process


- Follows Federal Brooks Act procurement procedure
 - Qualifications-based competitive process
 - Consistent with FTA & Council practices for professional engineering services procurements
 - Requires specific steps to evaluate proposals



8

Preliminary Engineering Consultants Procurement Process – Steps

- Evaluate technical proposals - 3 criteria
 - Quality of proposal
 - Qualifications of proposer
 - Experience of proposer
- Identify most qualified proposer
- Open price proposal
- Conduct negotiations



9

Preliminary Engineering Consultants Procurement Process – Evaluation Panels

- Consists of six members for each procurement
 - Southwest LRT Project Office (2)
 - Light Rail Operations
 - MnDOT
 - Hennepin County
 - Community Works
- Identifies most qualified proposer
- Provides recommendation to the Council

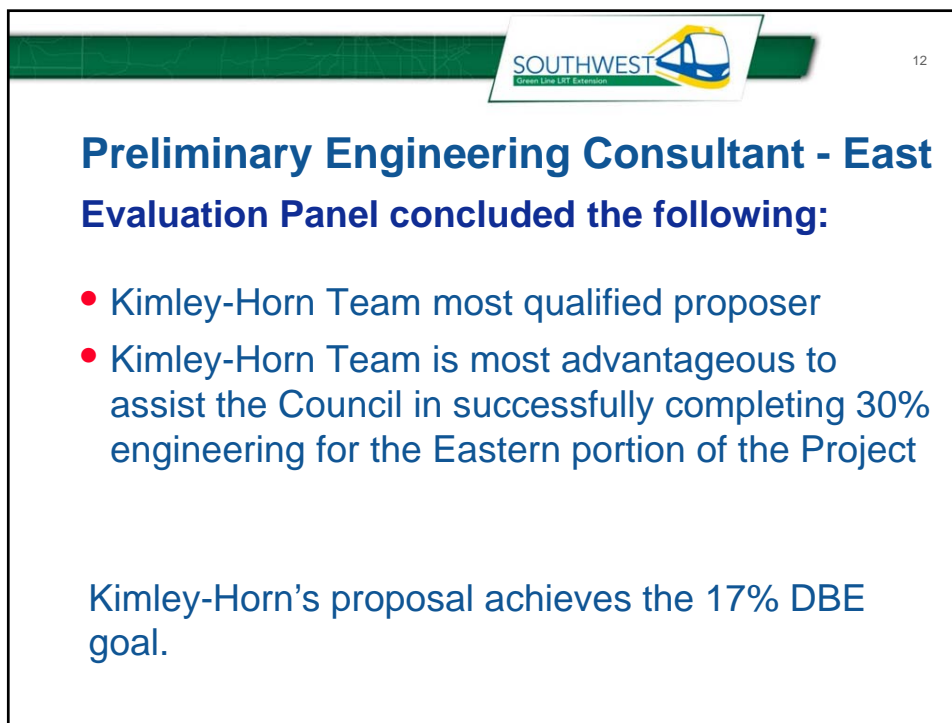
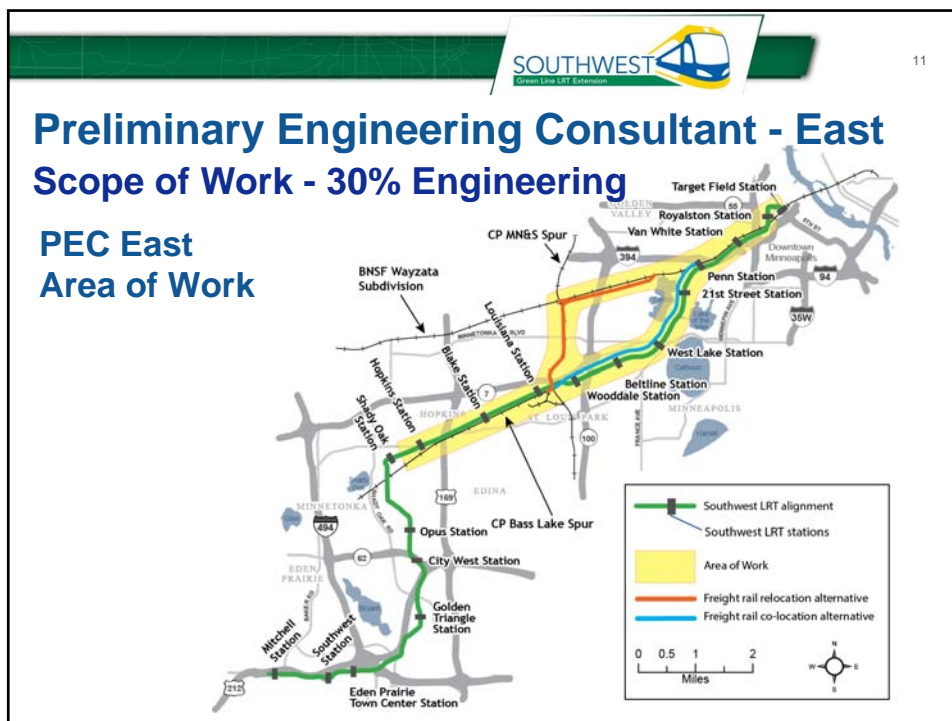



10

Preliminary Engineering Consultants Procurement Process – Technical Advisory Groups

- Consists of six members for each procurement

PEC East	PEC West
- Southwest LRT Project Office	- Southwest LRT Project Office
- MnDOT	- MnDOT
- Hopkins	- Eden Prairie
- Minneapolis	- Hopkins
- St. Louis Park	- Minnetonka
- Three Rivers Park District	- Metropolitan Transportation Services
- Provides technical review and input





13

Recommended Action

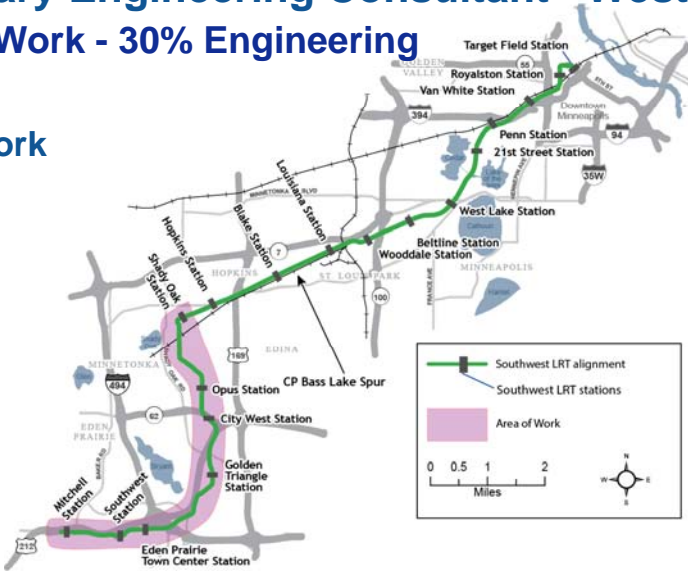
Authorize the Regional Administrator to:

- Negotiate & execute a contract (12P176) with Kimley-Horn & Associates for the Preliminary Engineering Consultant – East for SWLRT
 - Not to exceed \$16,788,349


14


Preliminary Engineering Consultant - West Scope of Work - 30% Engineering


**PEC West
Area of Work**



— Southwest LRT alignment
● Southwest LRT stations
 Area of Work

0 0.5 1 2 Miles






15

Preliminary Engineering Consultant - West Evaluation Panel concluded the following:

- AECOM Team most qualified proposer
- AECOM is most advantageous to assist the Council in successfully completing 30% engineering for the Western portion of the Project

AECOM's proposal achieves the 17% DBE goal.




16

Recommended Action

Authorize the Regional Administrator to:


- Negotiate & execute a contract (12P177) with AECOM for the Preliminary Engineering Consultant – West for SWLRT
 - Not to exceed \$16,787,963



17

Project Funding

Type	Year	Amount
CTIB	2010	\$7,000,000
	2011	\$12,200,000
	2012	\$13,562,000
HCRRA	2010	\$3,150,000
	2011	\$3,250,000
	2012	\$2,900,000
State	2009	\$5,000,000
	2012	\$2,000,000
Total		\$49,062,000




18

Funding for Preliminary Engineering Consultants

- Funding for PE \$49,062,000
- Amount expended to date* \$3,617,513
- Balance available for PE \$45,444,487
- Planned expenditures
 - Complete 30% engineering \$33,600,000

* As of October 31, 2012


19

Next Steps

Major Milestones	Anticipated Dates
Advertised Peer Review Consultant RFP	December 14, 2012
Advertise FEIS Consultant RFP	December 2012
Conclude DEIS public comment period	December 31, 2012
Seek Municipal Consent approvals	Q4 2013
Complete 30% PE plans and specifications	Q1 2014


20

More Information

Online:
www.SWLRT.org

Email:
SWLRT@metrotransit.org

