



Improving mobility

Easing congestion

Strengthening our communities

Central Corridor **Light Rail Transit**



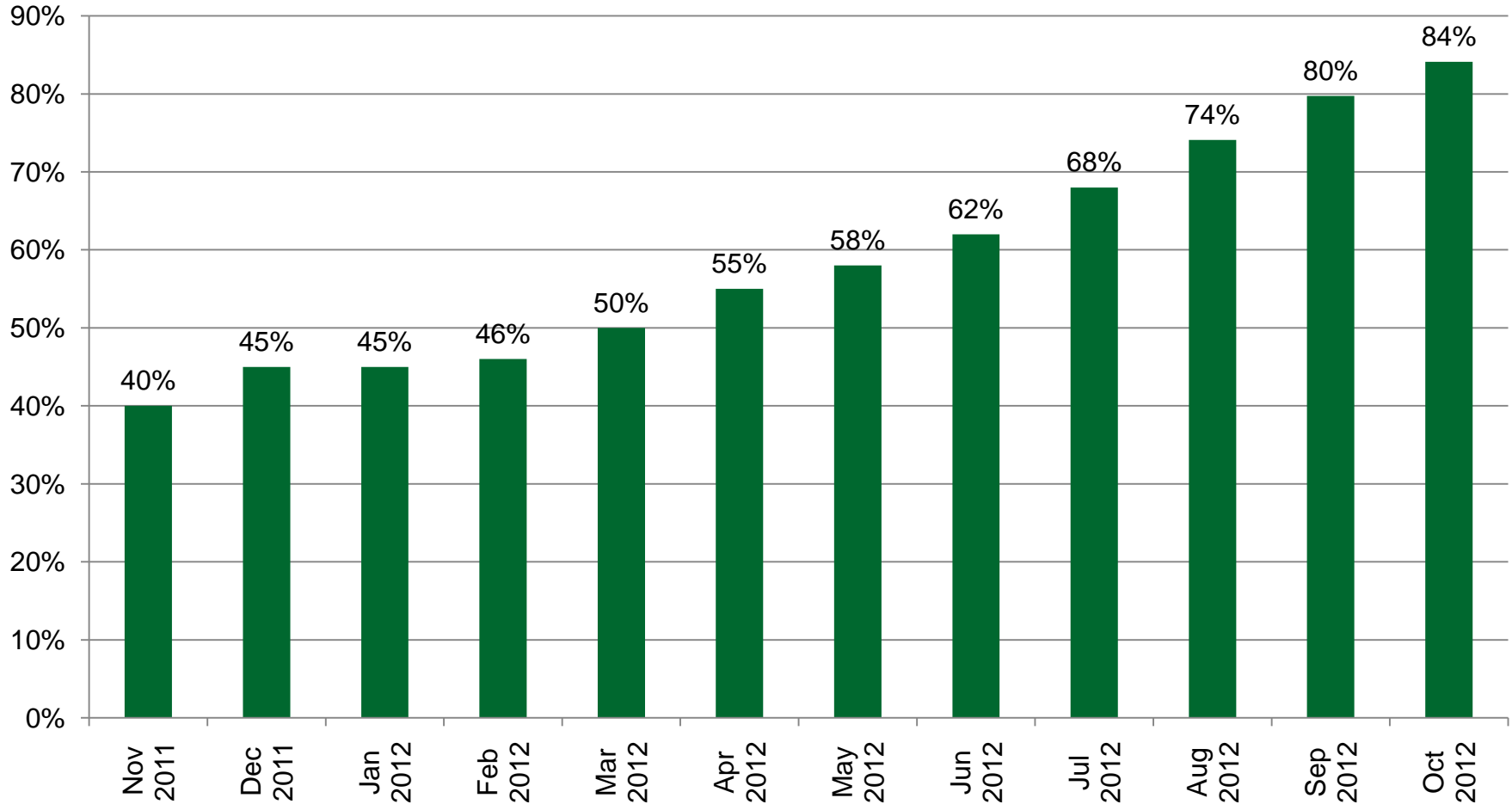
Transportation Committee Construction Update December 10, 2012

Today's Topics



- 2012 Construction Recap
 - OMF
 - Civil East
 - Civil West
 - Systems
 - Stations
- 2013 Look Ahead
- DBE

Construction Complete through October 2012



OMF: Track Installation



OMF: Maintenance Pits



OMF: Train Storage



OMF: Façade Improvements



11/30/2012

Civil East: Track to OMF

October



November



Civil East: 4th and Minnesota

Nov. 2011



Nov. 2012



Civil East: Cedar North of 7th



Civil East: Cedar Street Bridge



Civil East: Robert Street



Civil East: Track and Paving



December

August



Civil East: Tunnel Work



August

December



Civil East: University Ave. Rice to Marion



July



December

Civil East: University Ave. and Hamline



December

June



Civil East: University Avenue



November

March



Civil East: Pavers Installation Complete



Civil West: University Avenue and 29th



December

June



Civil West: Transitway



November



June

Civil West: Huron and University Ave.



November



September



Civil West: Washington Ave. Transit Mall



Civil West: Washington Avenue Looking East from Pedestrian Bridge

March



December



Civil West: Washington Avenue Looking West from Pedestrian Bridge



December



October



Civil West: Washington Avenue Bridge



August



March

08.30.2012 08:59

Civil West: Bridge Girders and Piers



2010

Nov. 2012



Systems: Hiawatha/Central Corridor Tie-In

April



August



November



Systems: TPSS Buildings On-Site



TPSS-CC01 (HLRT Tie-in)

TPSS-CC03 (Stadium Village)

TPSS-CC05 (Raymond)

TPSS-CC00 (Mall of America)

4,455 Construction Workers (As of October 31, 2012)

2010
(583 workers)



2011
(1,831 workers)



2012
(2,041 workers)



 = 100 workers



Improving mobility

Easing congestion

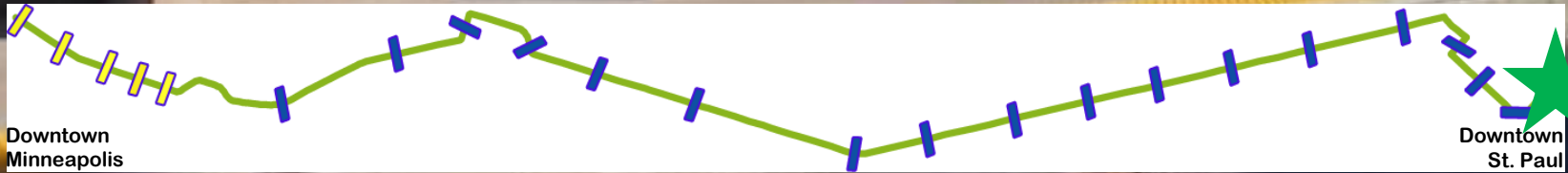
Strengthening our communities

Central Corridor **Light Rail Transit**

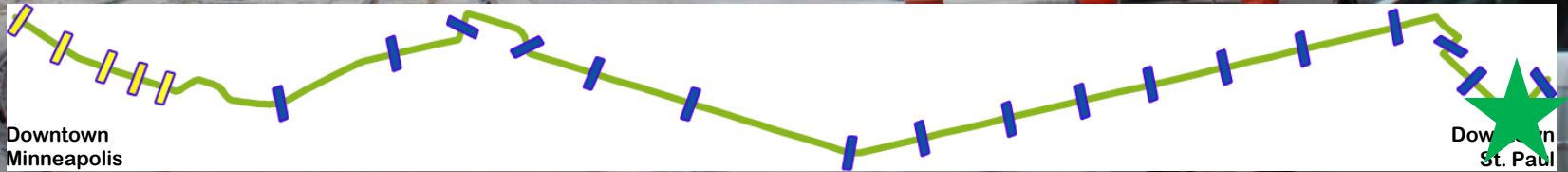


**All 18 Stations
Structurally Complete**

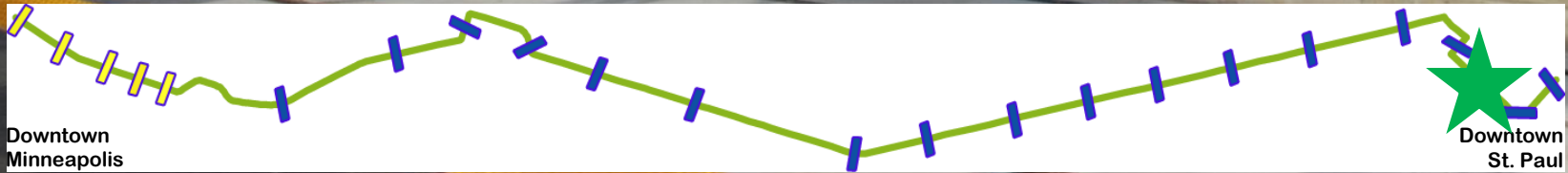
Union Depot Station



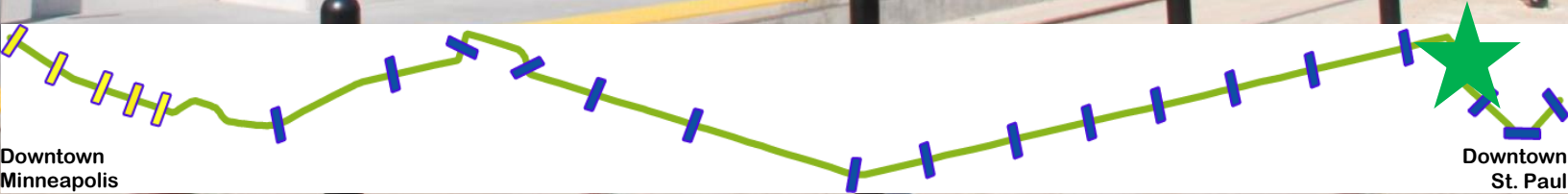
Central Station



10th Street Station



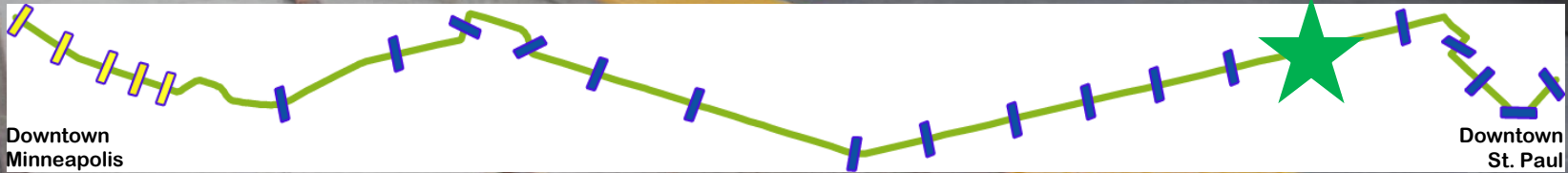
Robert Street Station



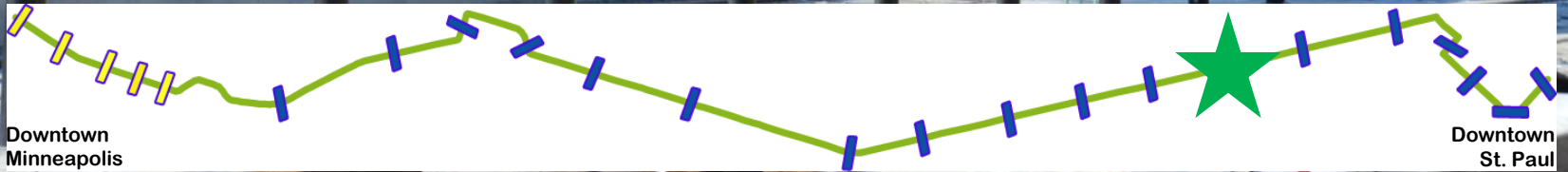
Capitol/Rice Street Station



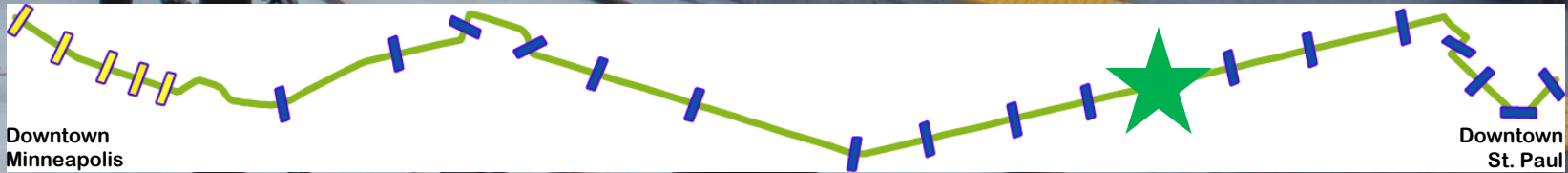
Western Station



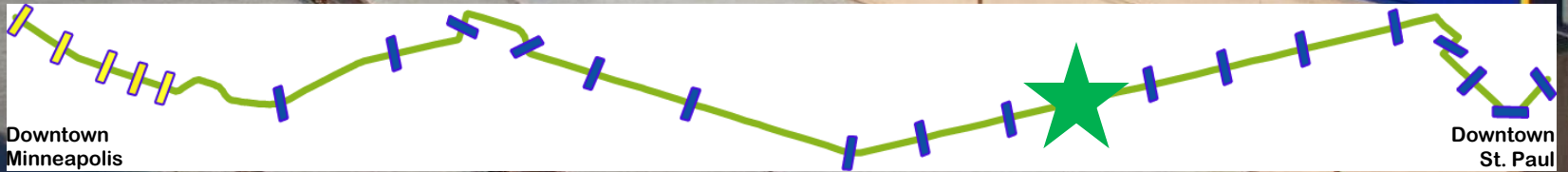
Dale Street Station



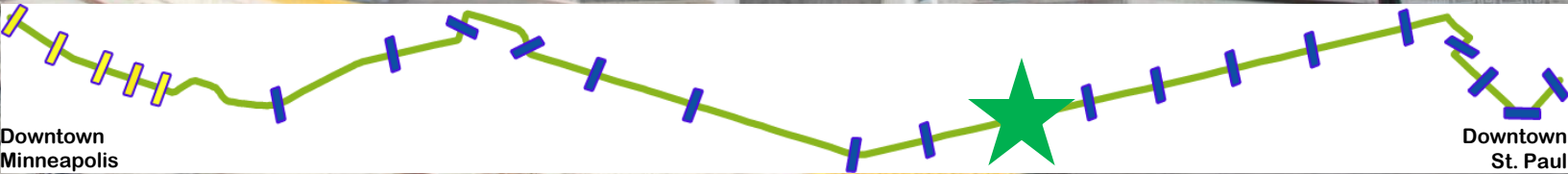
Victoria Street Station



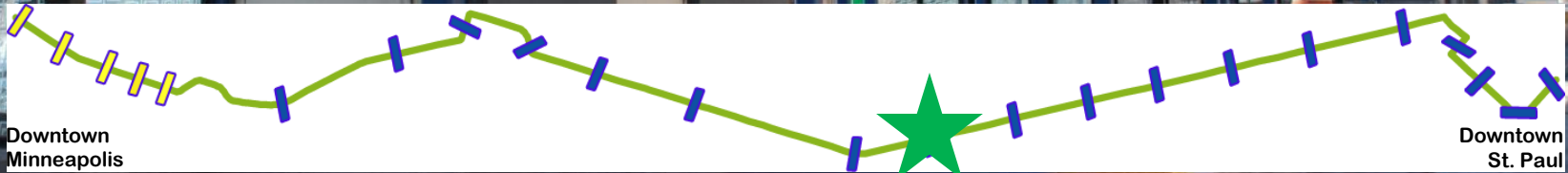
Lexington Parkway Station



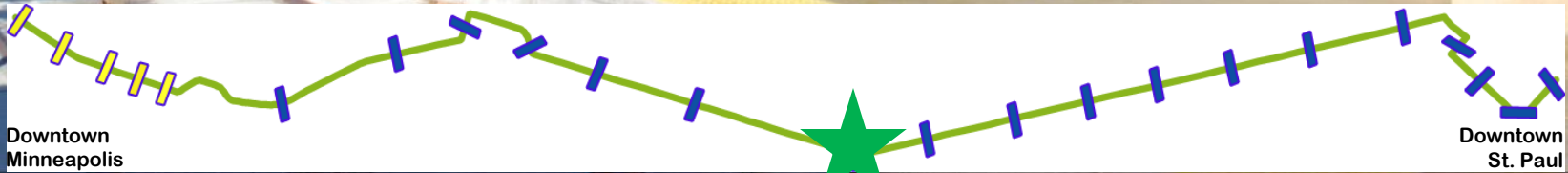
Hamline Avenue Station



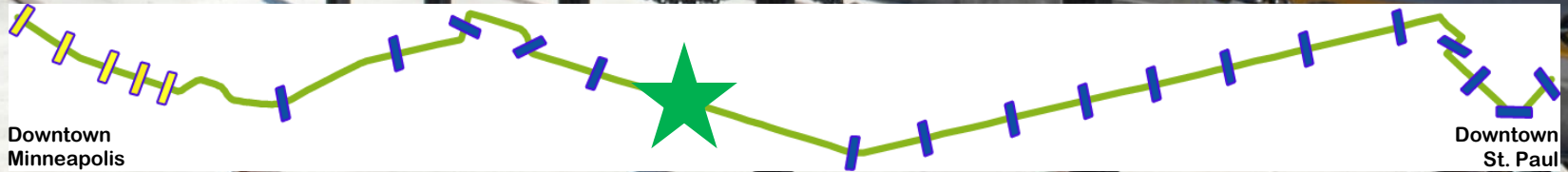
Snelling Avenue Station



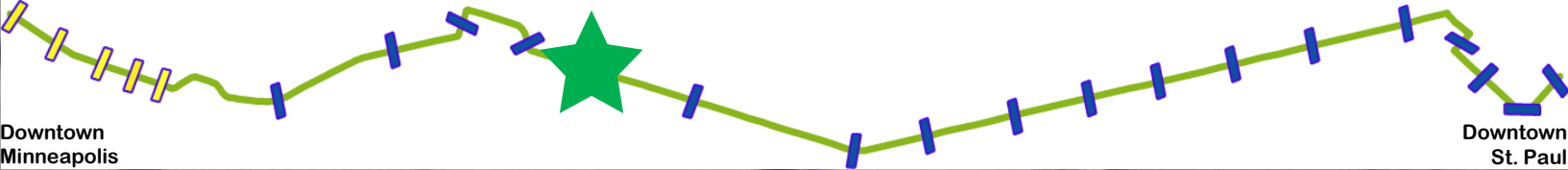
Fairview Avenue Station



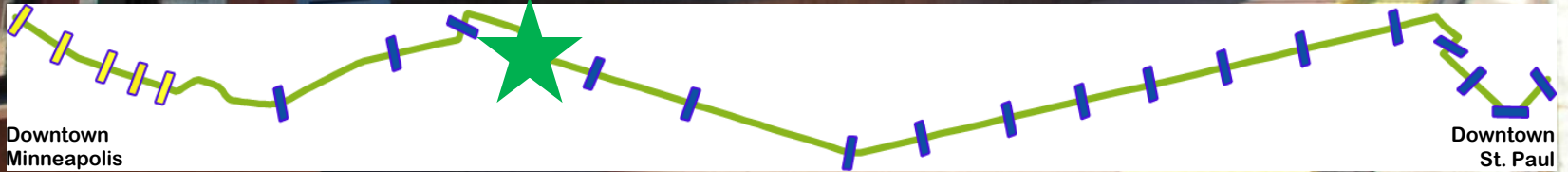
Raymond Avenue Station



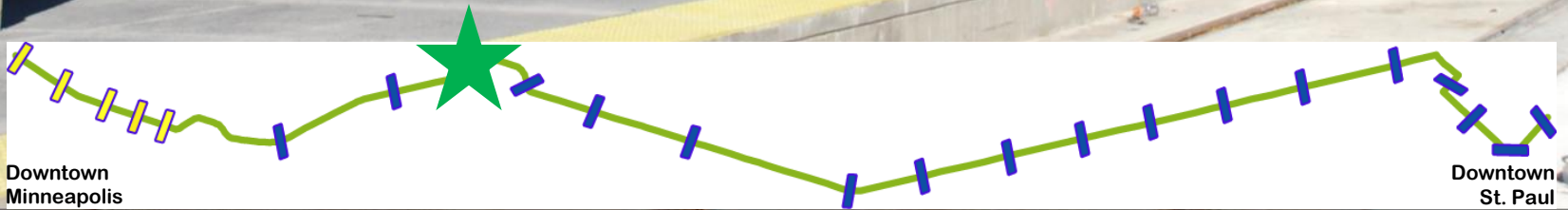
Westgate Station



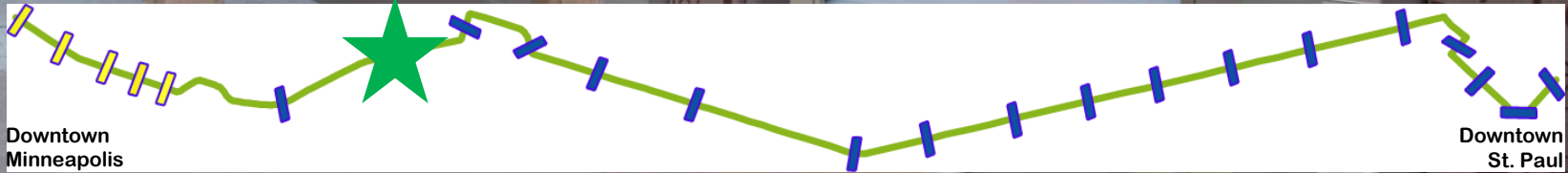
Prospect Park Station



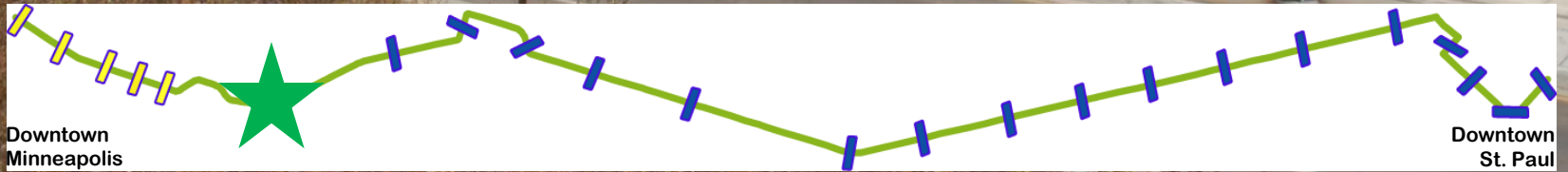
Stadium Village Station



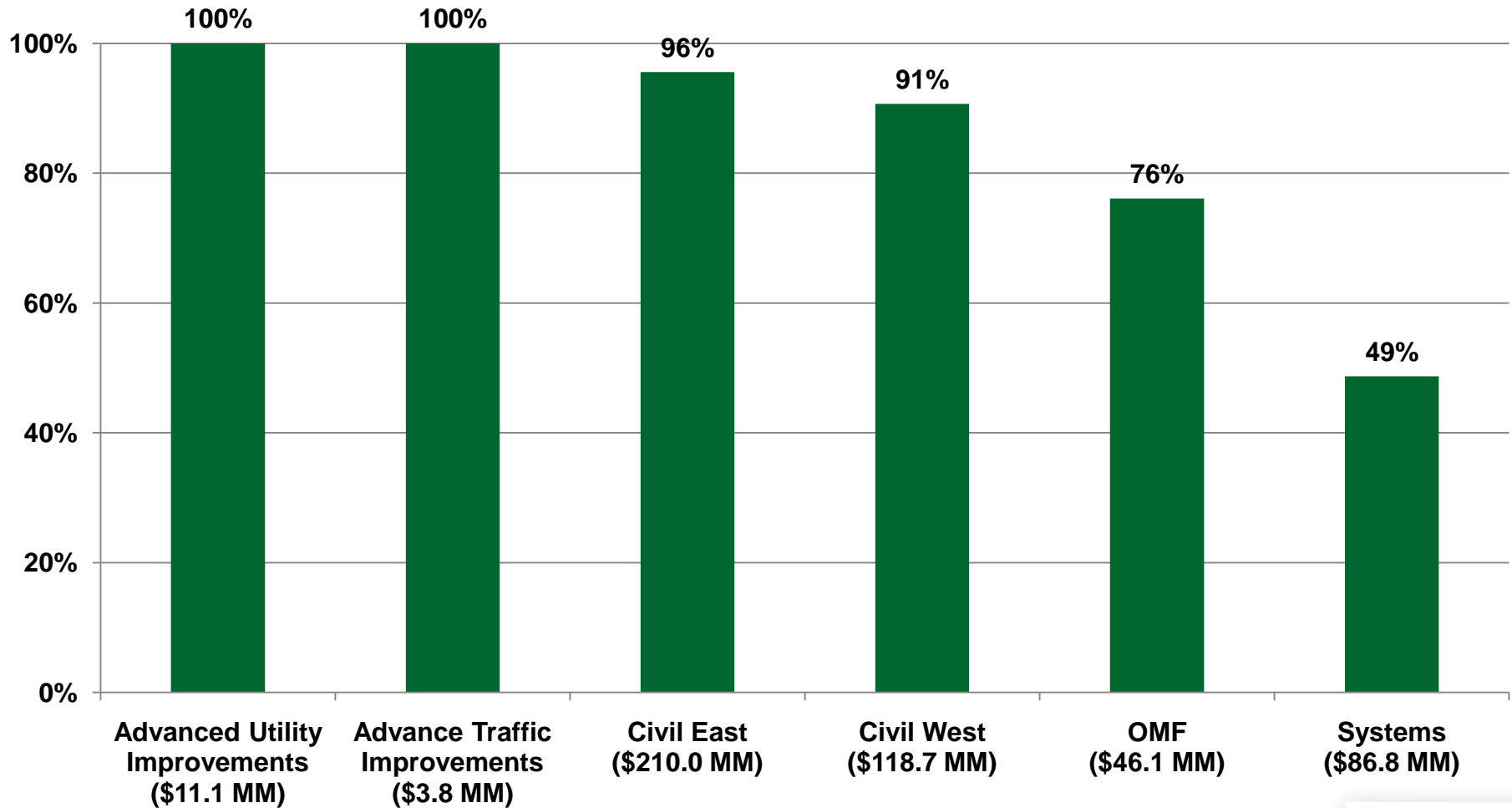
East Bank Station



West Bank Station



Construction Complete by Contract through Oct 2012





Improving mobility

Easing congestion

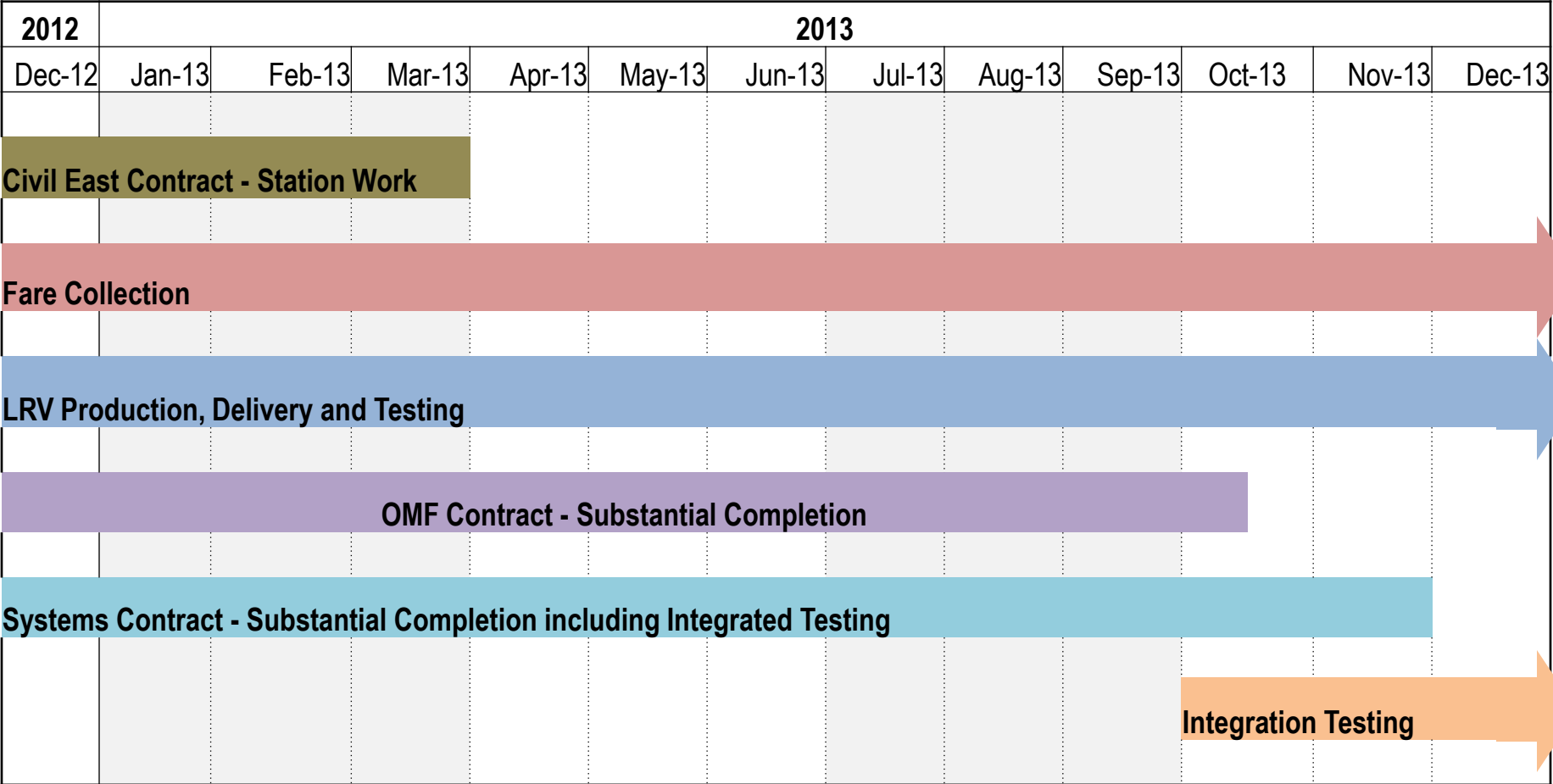
Strengthening our communities

Central Corridor **Light Rail Transit**



2013 Look Ahead

2013 Schedule



Operations and Maintenance Facility

- Substantial completion of the building by Q2 2013
- Systems work to begin inside the building in February-March 2013
- Substantial completion of the OMF yard, October 2013
- Substantial completion of all of the work, October 2013



Lafayette Bridge/OMF Location



Systems: Install Catenary Poles



Systems: Install Catenary Wire



Systems: Pull Cable



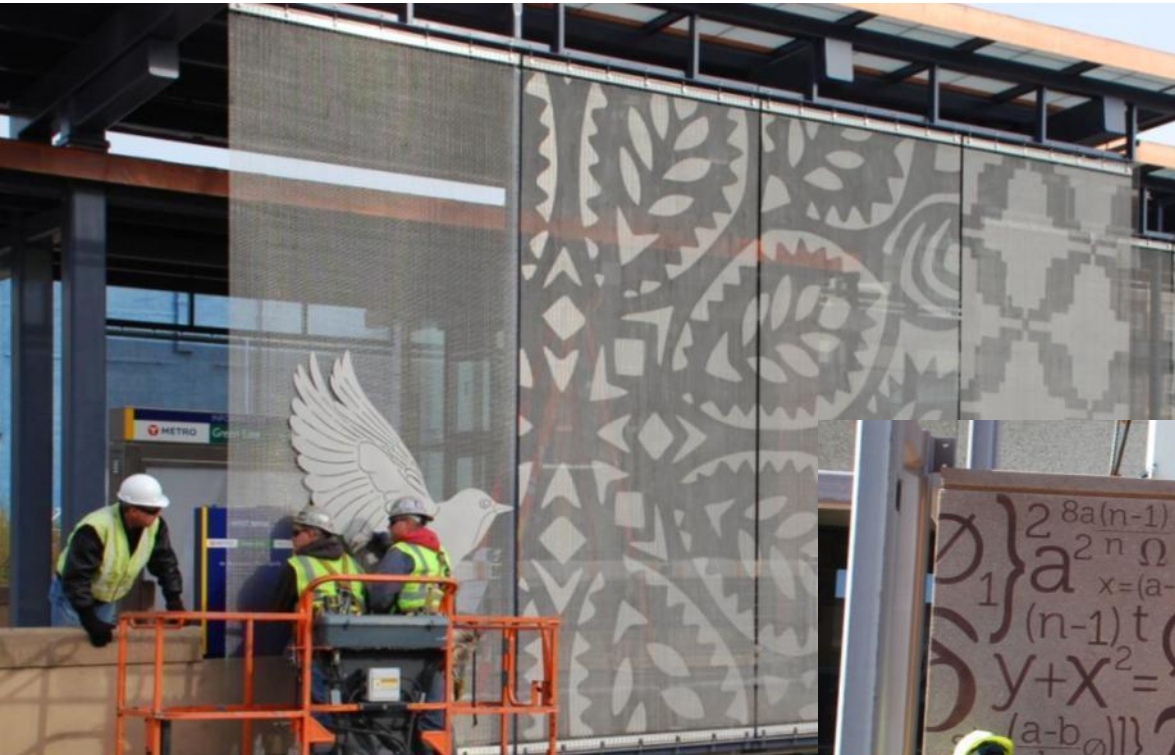
Systems: Install Signal Bungalows



Systems: Install Remaining TPSS



Install Public Art



Delivery of 38 Light Rail Vehicles



Vehicle Commissioning



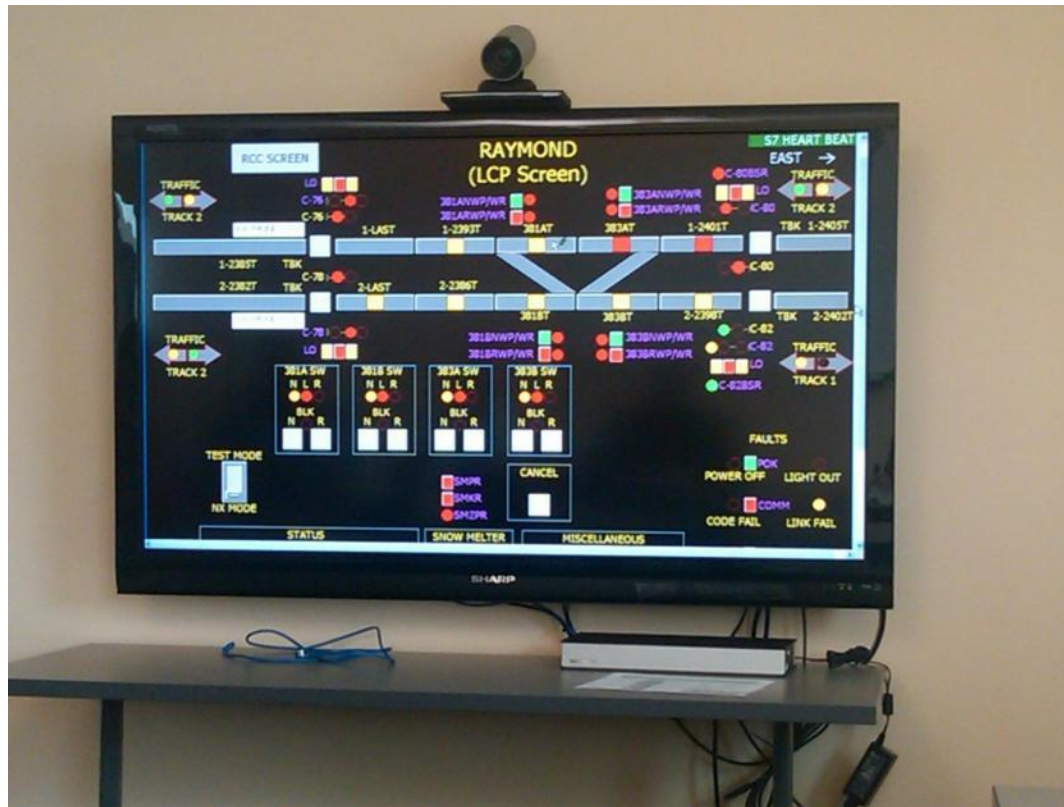
Vehicle Testing



LRV Delivery Schedule



Integration Testing: Rail Control Center



Integration Testing: Signals



Integration Testing

TWC Loop



5H Switch Machine



Fare Collection



Ticket Vending Machine

Milestone	Date
Completion of Final Design Review	Q2 2013
Completion of Factory Integration Tests	Q4 2013
Delivery of Equipment	2014
Installation of Equipment*	2014

*Installed by Metro Transit forces

On The Green Line Marketing Program Continues in 2013





Improving mobility

Easing congestion

Strengthening our communities

Central Corridor **Light Rail Transit**



DBE Report

DBE Achievement Professional Services

Contractor	Contract Description	Amended Contract	\$ DBE Goal	Contract Payments to Date	\$ DBE to Date	% DBE of Contract Payments to Date	As of Date for each Contract
AECOM	PE, APE and FD (17% goal)	\$105,175,175	\$17,879,780	\$102,185,520	\$18,253,155	17.86%	10/26/12
MnDOT	Property Services (15% goal)	\$1,314,592	\$197,189	\$694,239	\$81,278	11.71%	05/08/12
Total		\$106,489,767	\$18,076,969	\$102,879,759	\$18,334,433	17.82%	

DBE Achievement Construction (15% goal)

Contractor	Bid Pack	Amended Contract	\$ DBE Goal	Contract Payments to Date	\$ DBE Payments to Date	% DBE of Contract Payments to Date	As of Date for each Contract
Ames/ McCrossan	Civil West	\$120,015,569	\$18,002,335	\$110,001,818	\$17,394,072	15.81%	10/15/12
Walsh	Civil East	\$220,578,660	\$33,086,799	\$204,914,867	\$35,131,517	17.14%	10/25/12
Aldridge/ Collisys	Systems	\$89,165,420	\$13,374,813	\$41,979,494	\$4,538,633	10.81%	09/30/12
PCL	OMF	\$47,325,390	\$7,098,809	\$33,649,644	\$2,549,353	7.58%	09/25/12
Carl Bolander	AUR	\$13,768,232	\$2,065,235	\$13,768,202	\$1,631,238	11.85%	10/21/2011 Final
Graham	ATI**	\$4,246,305	\$636,946	\$4,246,312	\$686,532	16.17%	11/3/2011 Final
Weighted Average		\$495,099,577	\$74,264,937	\$408,560,336	\$61,931,344	15.16%	

PCL's approved DBE participation at time of bid was 5.9%. PCL currently projects reaching 10.9% DBE participation and continues to make efforts to reach the 15% contract goal.
 ** These represent the Final DBE figures for the ATI contract.

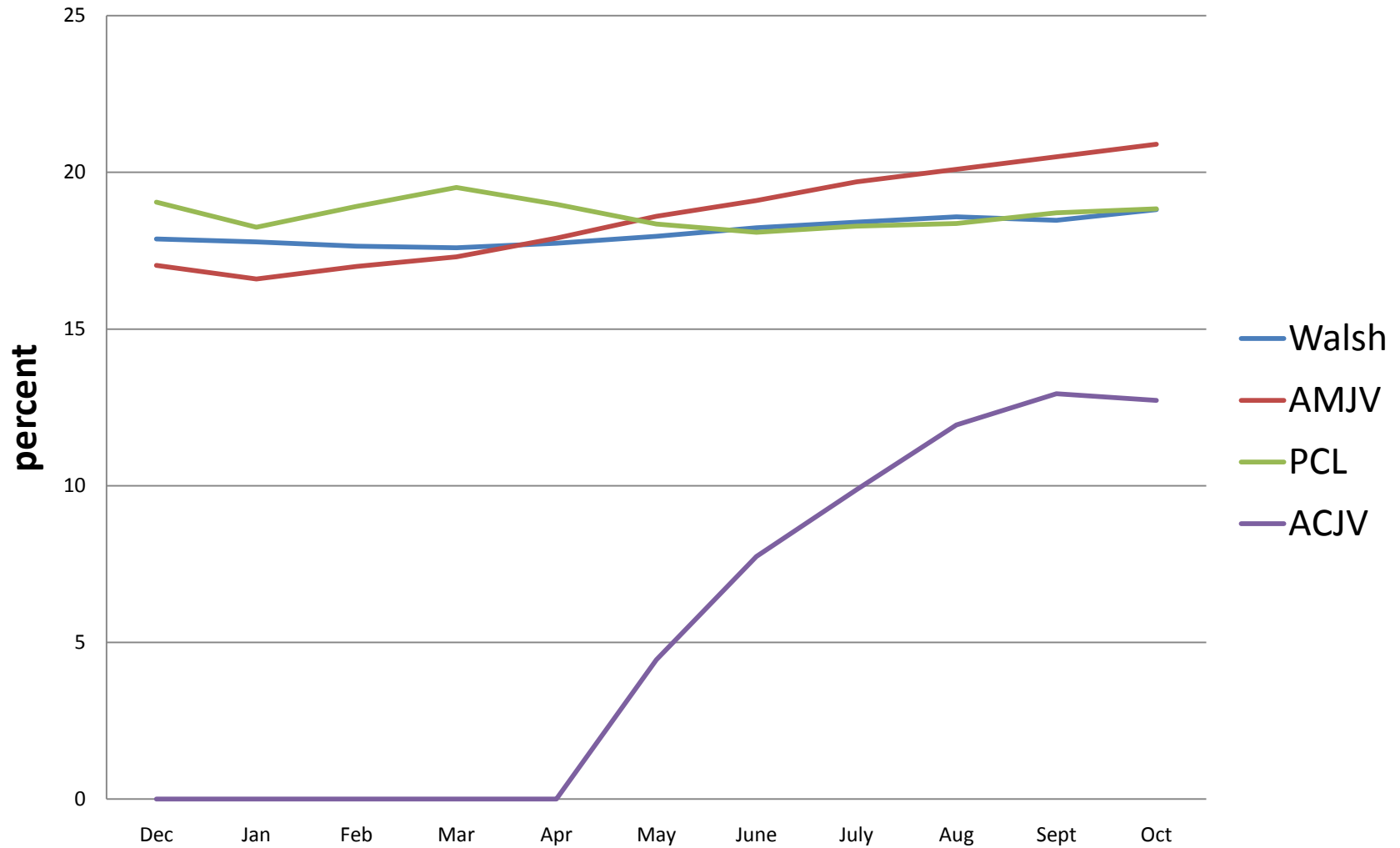
TOTAL HOURS TO DATE 10/31/2012

Goals: 18% Minority 6% Women

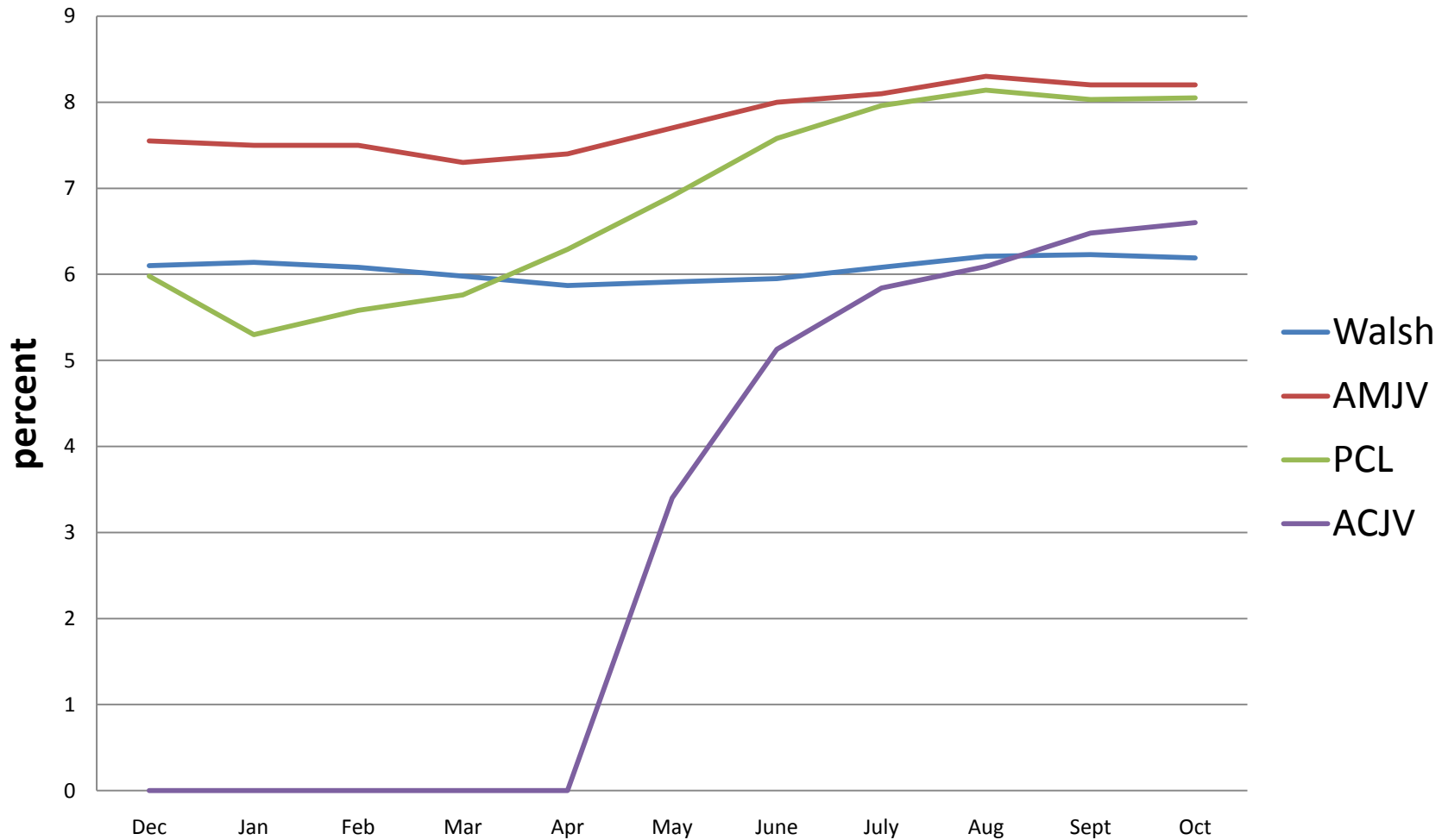
Contractor	Total hours	Minority hours	Minority %	Women hours	Women %
Walsh	1,014,373	190,819	18.81(+.07)	62,77.25	6.19 (-.04)
AMJV	436,446	91,122	20.9% (+.04)	35980.75	8.2% (0.0)
PCL	156,382	29,464	18.84%(+.13)	12584.15	8.05% (+.02)
ACJV	46,437	5,909	12.72%(+.23)	3,066.75	6.60% (+.12)

(-/+) indicates change from previous month

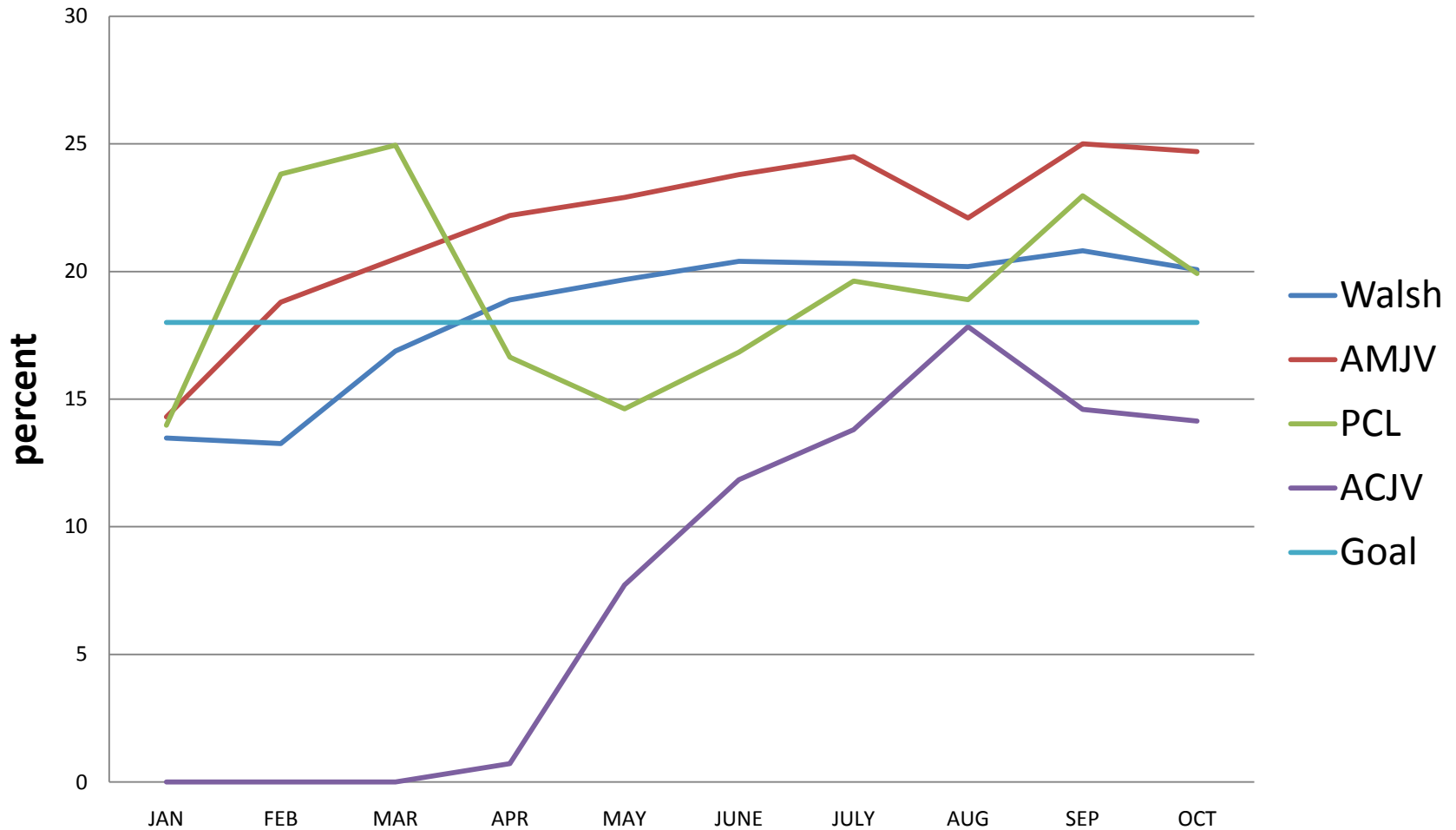
To Date Minority Inclusion 2012



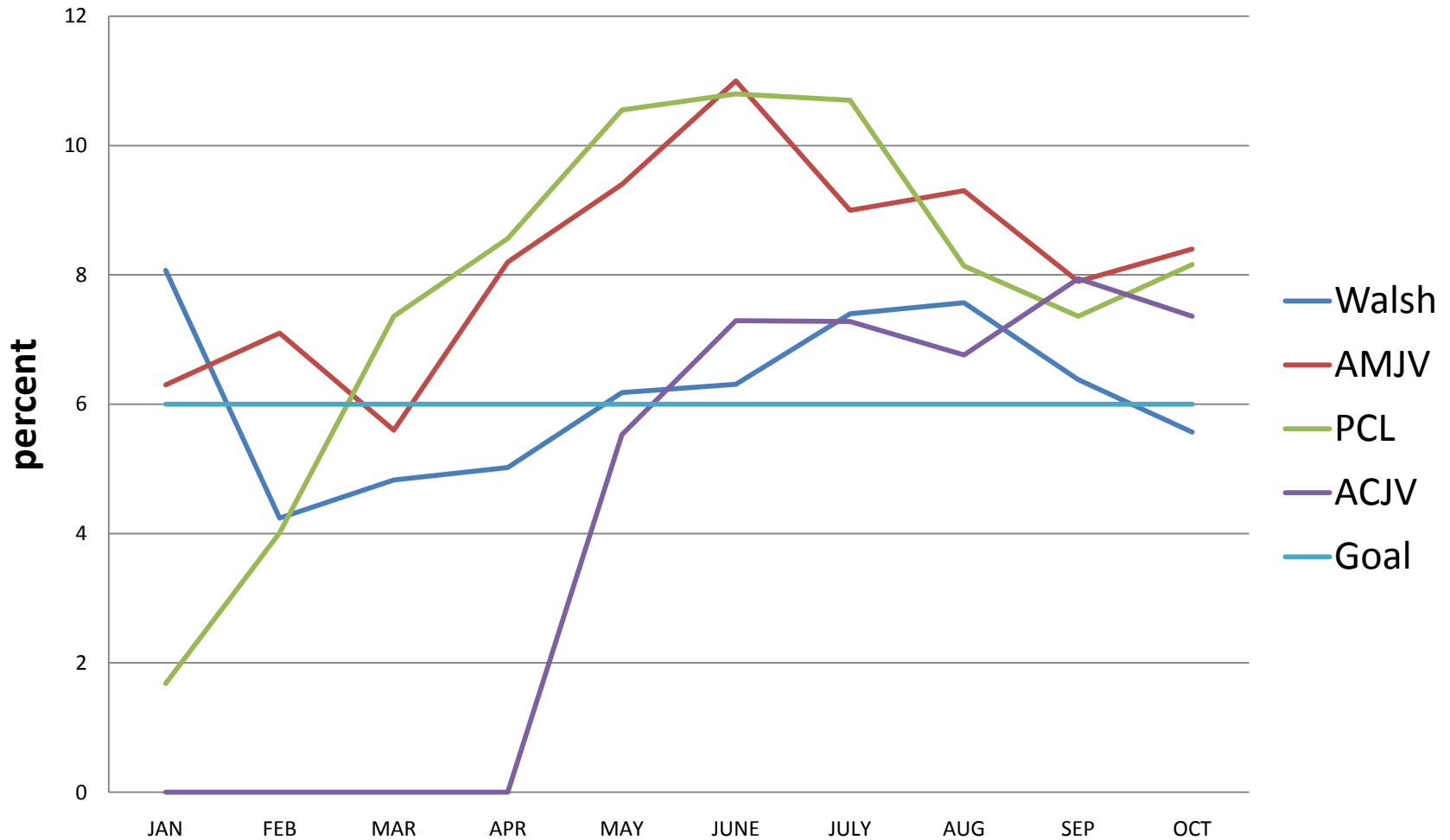
To Date Female Inclusion 2012



Monthly Miority Inclusion 2012



Monthly Female Inclusion 2012





LRTWorks is name for the construction database and community outreach services operated by Workforce Solutions and The Metropolitan Council. The database is adaptable for the construction industry and can be used to determine labor availability within the industry and provide quantifiable, transparent evidence of recruitment efforts that is easily verifiable.

LRTWORKS/CCLRT Project

- Jobs postings **761**
- CCLRT Job postings **214**
- Workers registered **1,527*** (Peak of Project in 2011)

Contractor query launched February 2012

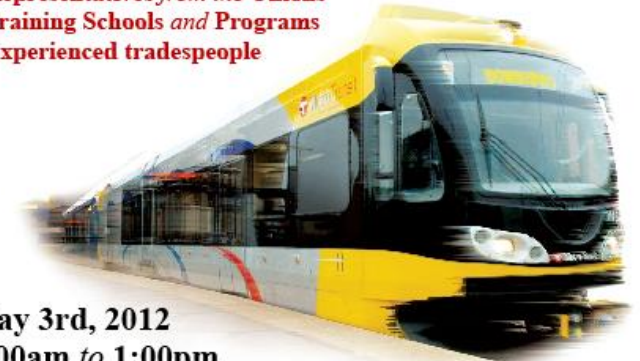
- LRT Registered Contractors **40**
- Companies who hired **5**
- Total interviews **14**
- Total hires **9**
- Minorities hired **8**
- Females hired **3**

- Ramsey County, Minneapolis, and Hmong Outreach events.
- Nearly 300 people in attendance
- 15 onsite job interviews
- 2 onsite hires
- 7 total hires

Ramsey County Lets Build!

Network with:

- 1. Contractors working on the Central Corridor**
- 2. Representatives from the Unions**
- 3. Training Schools and Programs**
- 4. Experienced tradespeople**



May 3rd, 2012

9:00am to 1:00pm

**Oxford Community Center/ Jimmy Lee Recreation Center
270 North Lexington, St. Paul, MN 55104 (bus route 21)**

 **Metropolitan Council**

For additional information

*Leo Jackson
Leo.jackson@metc.state.mn.us
with any questions*

More Information



Check out our website:

- www.centralcorridor.org

Contact Central Corridor
Project Office:

- 540 Fairview Avenue North
St. Paul, MN 55104
- Construction Hotline: 651-
602-1404
- Comment Line: 651-602-
1645
- Email:
centralcorridor@metc.state.mn.us