



Improving mobility

Easing congestion

Strengthening our communities

Central Corridor **Light Rail Transit**



Transportation Committee

September 24, 2012



Improving mobility

Easing congestion

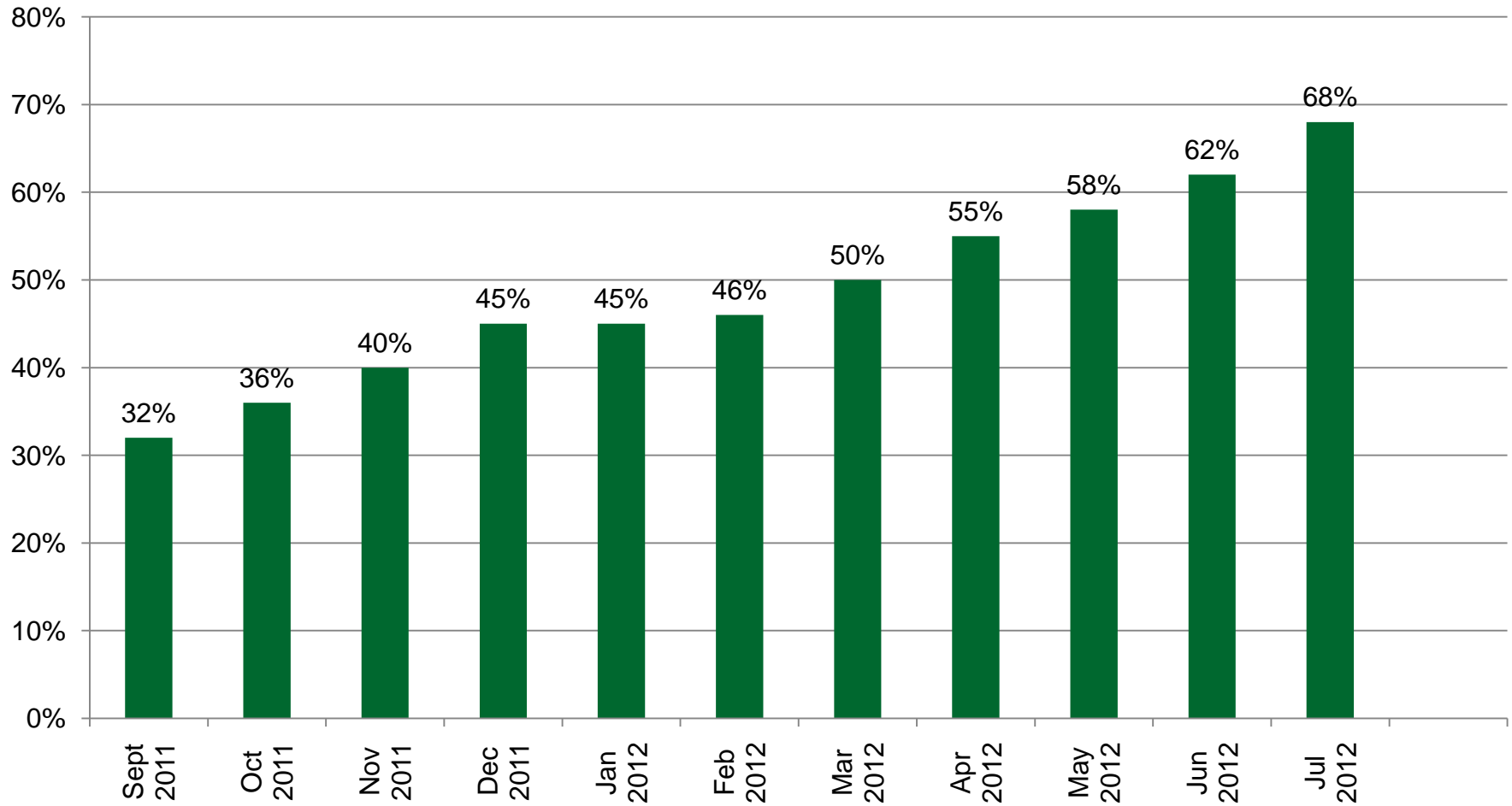
Strengthening our communities

Central Corridor **Light Rail Transit**

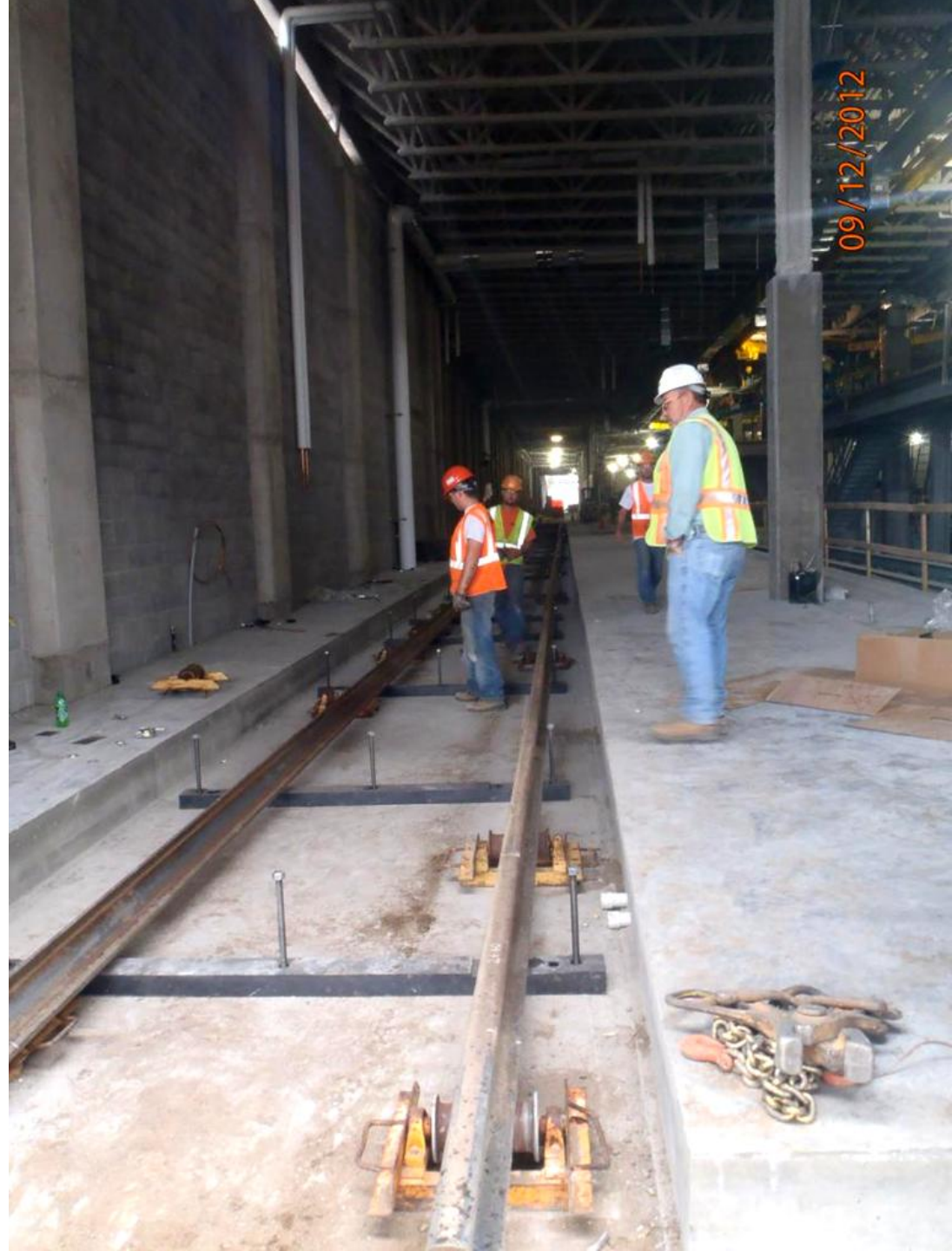


Construction Update

Construction Complete through July 2012



OMF: First Track Installed



Union Depot Station



Central Station



Civil East: Track Pour Cedar Between 6th & 7th



10th Street Station



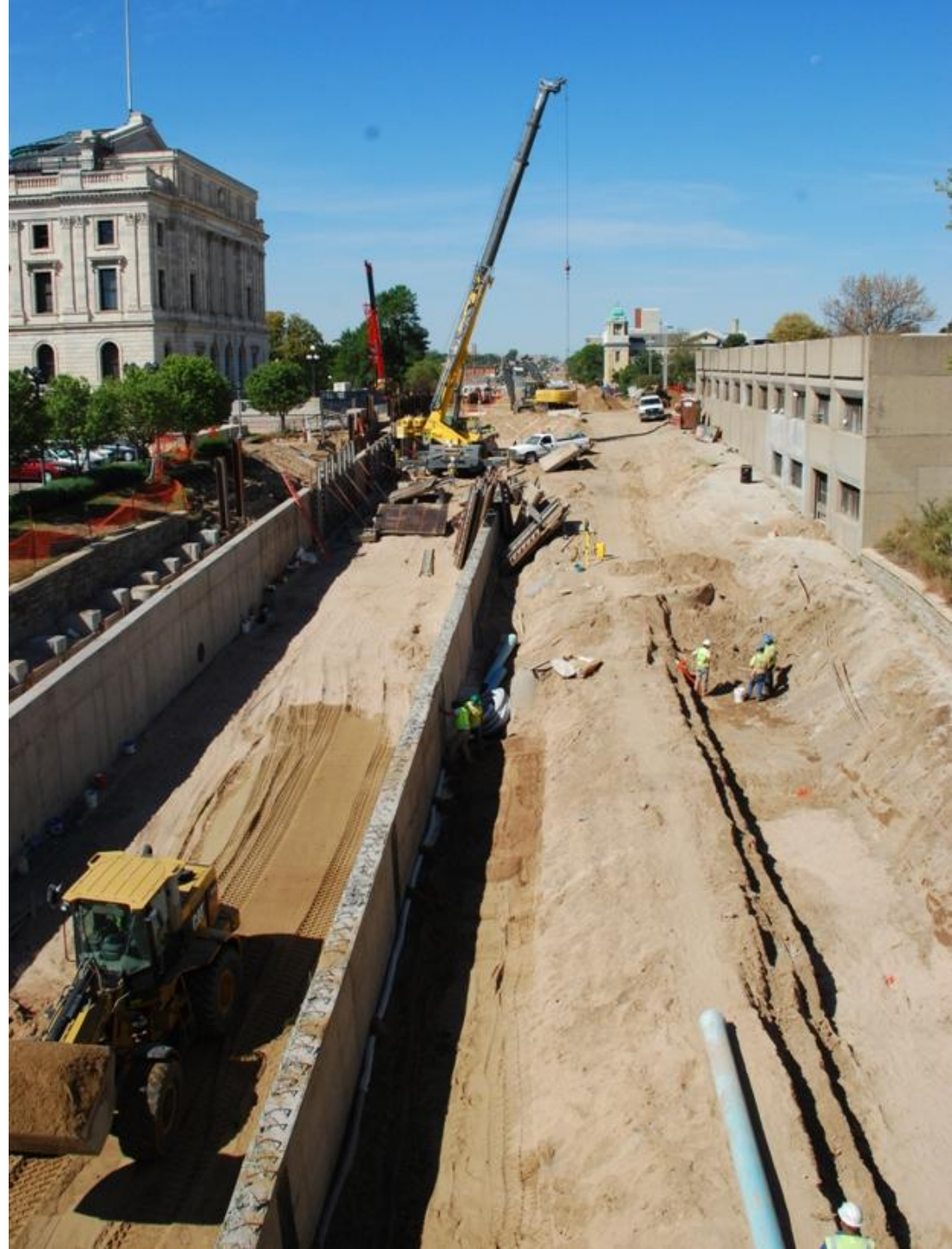
Civil East: Cedar St. Bridge Deck Poured



Robert Street Station



Civil East: Construction Behind Capitol



Capitol/Rice Street Station



Western Station



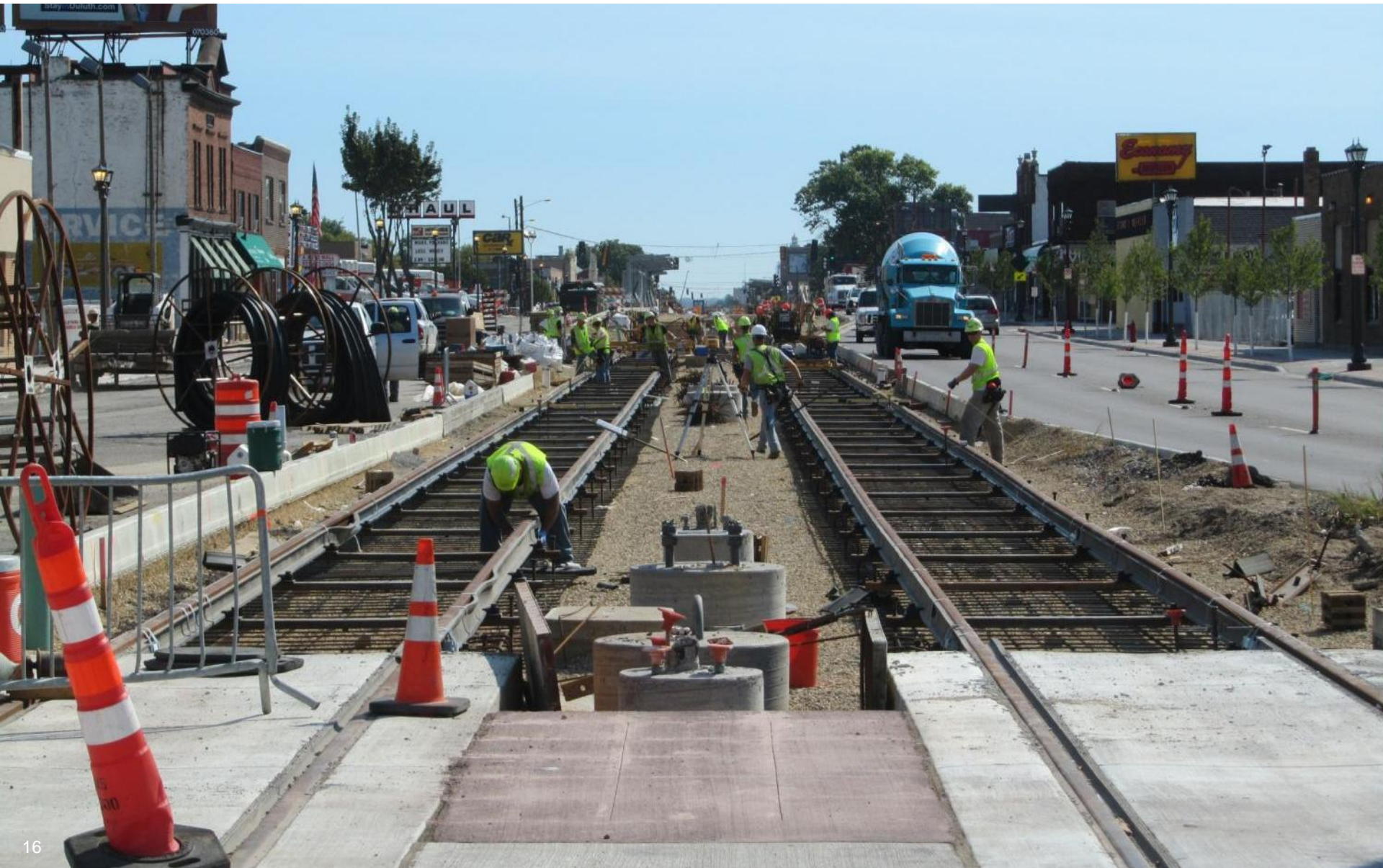
Dale Street Station



Victoria Station



Civil East: Track Construction Near Milton



Lexington Parkway Station



Hamline Station



Snelling Station



Fairview Station



Raymond Avenue Station



Westgate Station



Prospect Park Station



Civil West: Embedded to Ballast Track



Stadium Village Station



Civil West: Huron Traffic Lanes Open



Civil West: Washington and Harvard Intersection



East Bank Station



Civil West: DF Track Installed on Washington Avenue Bridge



Civil West: Washington Avenue Bridge



West Bank Station



Systems: TPSS #5 Placement



Systems: Weld to Tie-In Central Corridor with Hiawatha LRT Line



Civil East: 48 Workers in 650 Ft. (Pascal to Hamline)



4,067 Construction Workers (As of August 31, 2012)

2010

(583 workers)



2011

(1,831 workers)



2012

(1,653 workers)



 = 100 workers

More Information



Check out our website:

- www.centralcorridor.org

Contact Central Corridor Project
Office:

- 540 Fairview Avenue North
St. Paul, MN 55104
- Construction Hotline: 651-602-1404
- Comment Line: 651-602-1645
- Email:
centralcorridor@metc.state.mn.us