

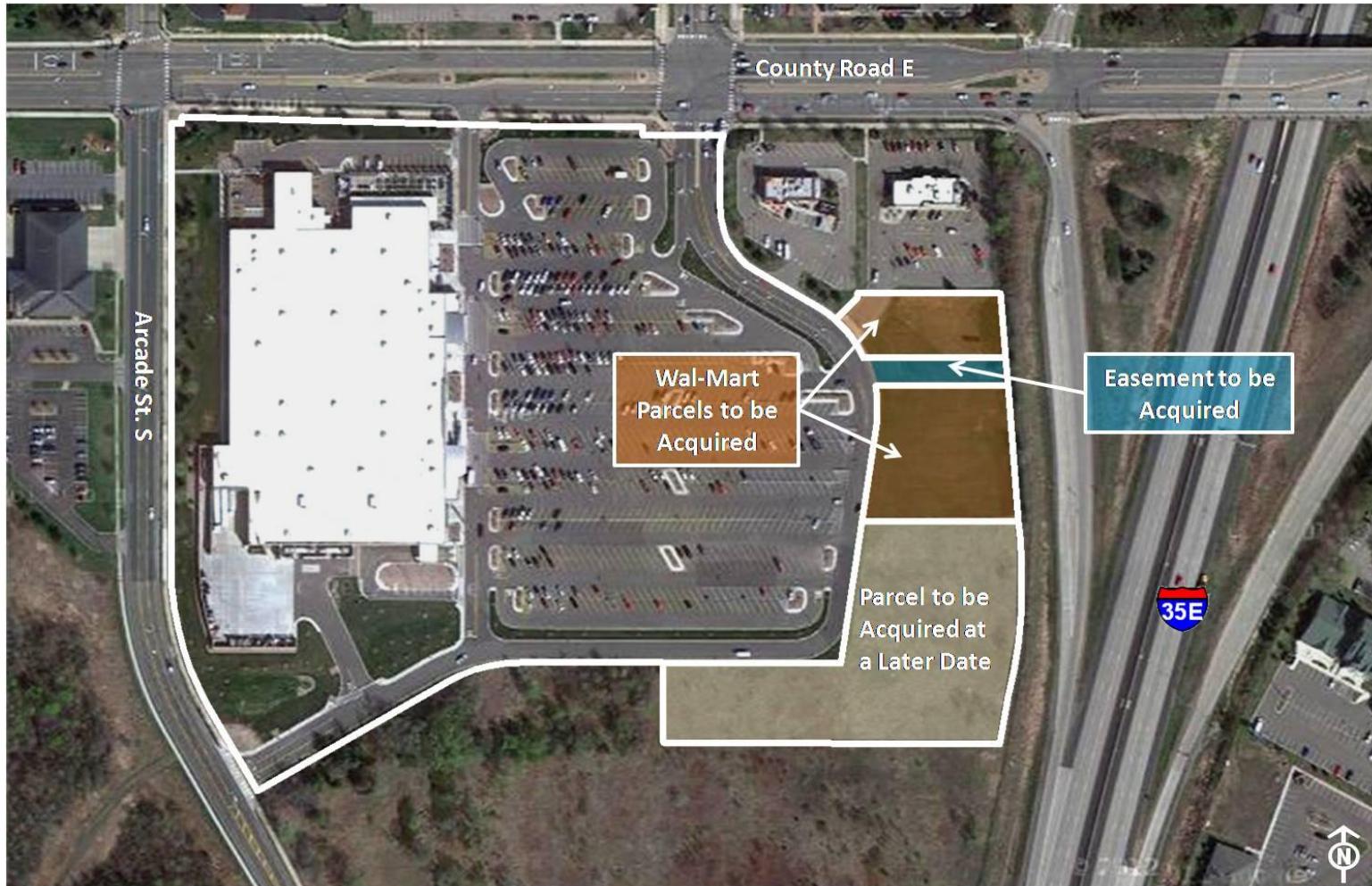


I-35E & Co Rd E (Vadnais Heights) Park-and-Ride

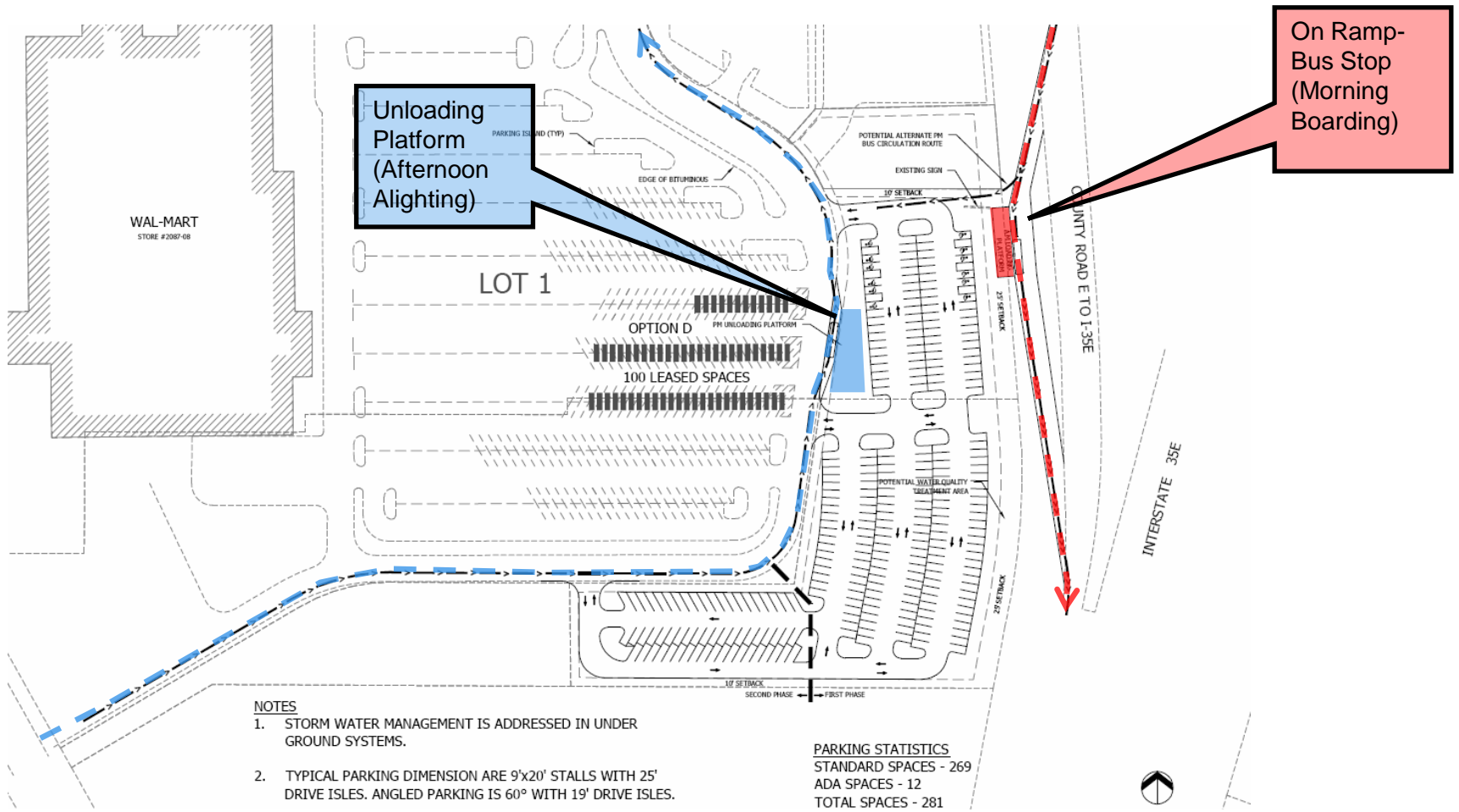
Metropolitan Council Transportation Committee
July 9, 2012

Julie Quinn
Metro Transit Engineering & Facilities
612-349-7333

I-35E & Co Rd E (Vadnais Heights) Park-and-Ride



I-35E & Co Rd E (Vadnais Heights) Park-and-Ride



- NOTES**
1. STORM WATER MANAGEMENT IS ADDRESSED IN UNDER GROUND SYSTEMS.
 2. TYPICAL PARKING DIMENSION ARE 9'x20' STALLS WITH 25' DRIVE ISLES. ANGLED PARKING IS 60° WITH 19' DRIVE ISLES.

PARKING STATISTICS

STANDARD SPACES	- 269
ADA SPACES	- 12
TOTAL SPACES	- 281

I-35E & Co Rd E (Vadnais Heights) Park-and-Ride

Proposed Action

- Authorization to negotiate and purchase two properties and an easement from Wal-Mart Realty Company at the appraised value