


Minnesota **GO**
A Collaborative Vision
for Transportation

Statewide
Multimodal
Transportation Plan



Draft Plan Update
Metropolitan Council
Transportation Committee
June 25, 2012

Challenges/Opportunities



- Aging populations
- Increased urbanization
- Energy shift
- Automation
- Budgetary challenges
- Health impacts
- Increased global competition
- Changing work environments
- Floods / water quality

Minnesota **GO**
Crafting a Transportation Vision for Generations

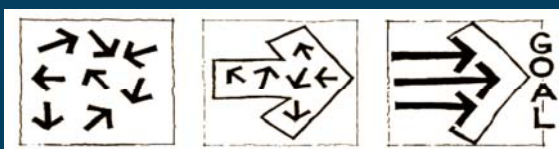
Minnesota GO Vision



- Better align the transportation system with what Minnesotans expect for their quality of life, economy and natural environment.
- Develop a vision for all forms of transportation.
- Ownership of the vision is a shared responsibility.



What is a Vision?



- A description of a desired future
- Answers the question:
"what are we trying to achieve?"
- Does NOT answer the question "how will we do it?"





A Transportation Vision for Generations

Minnesota's multimodal transportation system maximizes the health of people, the environment and our economy.



The system:



- Connects Minnesota's primary assets—the people, natural resources and businesses within the state—to each other and to markets and resources outside the state and country
- Provides safe, convenient and effective movement of goods and people
- Is flexible and nimble enough to adapt to changes in society, technology, the environment and the economy

The System:

Quality of Life:

- Recognizes and respects the importance and significance of place – not just as destinations, but also where people live, work, learn, play and access services
- Is accessible regardless of socio-economic status or physical ability

Environmental Health:

- Is designed in such a way that it enhances the community around it and is compatible with natural systems
- Minimizes resource use and pollution

Economic Competitiveness:

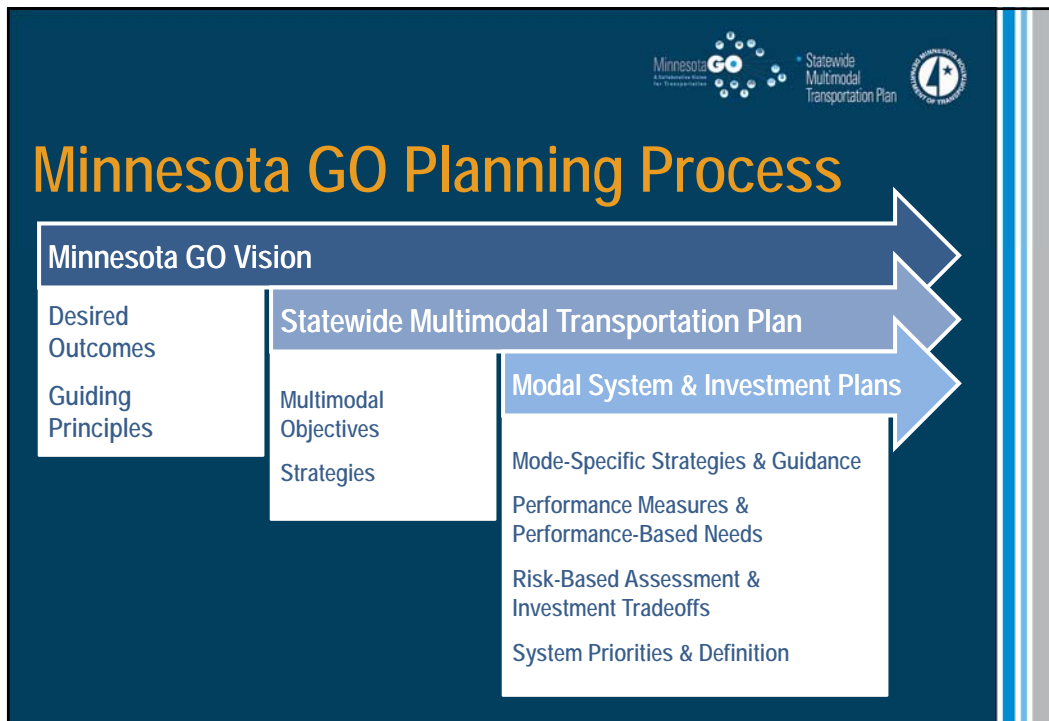
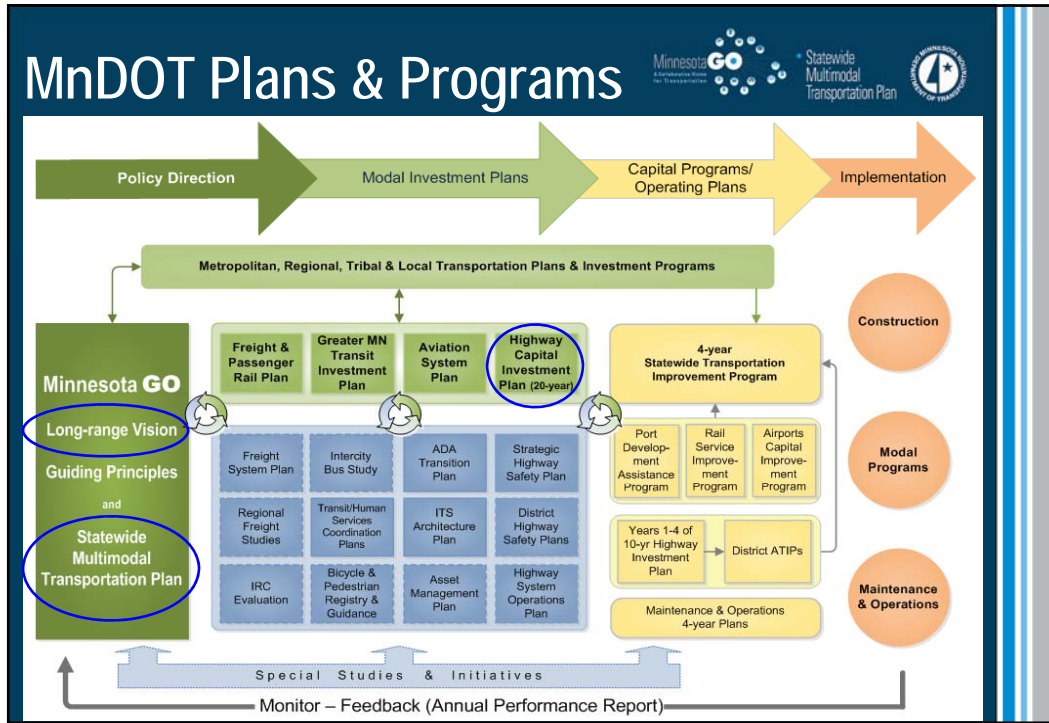
- Enhances and supports Minnesota's role in a globally competitive economy and the international significance and connections of Minnesota's trade centers
- Attracts human and financial capital to the state




Guiding Principles

- Leverage public investments to achieve multiple purposes
- Ensure accessibility
- Build to a maintainable scale
- Ensure regional connections
- Integrate safety
- Emphasize reliable and predictable options
- Strategically fix the system
- Use partnerships









Policy Objectives

- **Accountability, Transparency, and Communication**
Make transportation system decisions through processes that are open and supported by data and analysis; provide for and support coordination, collaboration, and innovation; and ensure efficient and effective use of resources
- **Traveler Safety**
Safeguard travelers, transportation facilities, and services. Apply proven strategies to reduce fatalities and serious injuries for all travel modes.





Policy Objectives

- **Transportation in Context**
Make fiscally responsible decisions that respect and complement the natural, cultural, and social context, and integrate land uses and transportation systems to leverage public and private investments
- **Critical Connections**
Identify global, national, statewide, regional, and local transportation connections essential for Minnesotans' prosperity and quality of life; develop and invest in lower cost, high benefit strategies as a first course of action to maintain and improve these connections; and consider new connections

Policy Objectives

- **Asset Management**
Strategically maintain and operate transportation assets; rely on system data, partners' needs, and public expectations to inform decisions; put technology and innovation to work to improve efficiency and performance; and recognize that the system should change over time
- **System Security**
Reduce system vulnerability and ensure system redundancy to meet essential travel needs during emergencies

Significant Changes From Last Plan

- Lower Cost/High Benefit Strategies as First Course of Action
- Strategically Fix the System
- Build to a Maintainable Scale for Future Sustainability
- Multimodal Strategies



How to comment on the plan?

- Public Hearing (July 12) – In-person or online
 - Details at www.MinnesotaGOplan.org
- Comment Submittal
 - MnDOT Office of Statewide Multimodal Planning
 - 395 John Ireland Blvd, MS 440
 - Saint Paul, MN 55155
 - Email: Kirby.Becker@state.mn.us

Logos: Minnesota GO, Statewide Multimodal Transportation Plan, Minnesota Department of Transportation