

# Bottineau Transitway

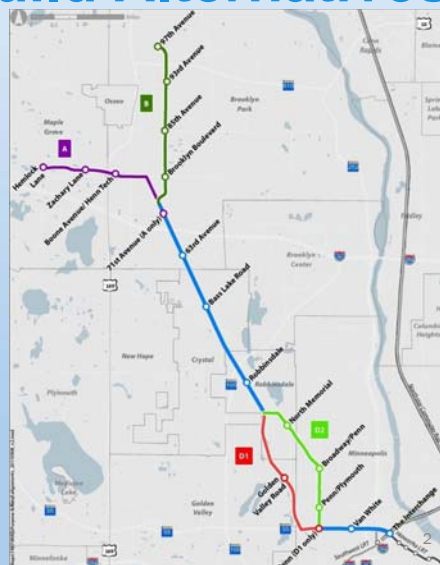
DRAFT ENVIRONMENTAL IMPACT STATEMENT

Metropolitan Council  
 Transportation Committee  
 APRIL 9, 2012  
 Joe Gladke, P.E. – Hennepin County  
 Housing, Community Works and Transit

## Transitway Build Alternatives

- Transit Mode
  - BRT or LRT
- Alignment
  - Alignment A vs. B
  - Alignment D1 vs. D2

\*BRT: B-C-D1 with service to Maple Grove



## Scoping Meetings

Open House Location	Date	Attendees
Theodore Wirth Chalet	January 23, 2012	127
Brooklyn Park City Hall	January 24, 2012	44
Urban Research and Outreach/Engagement Center	January 25, 2012	47
Robbinsdale City Hall	January 31, 2012	165
<b>Total</b>		<b>383</b>



3

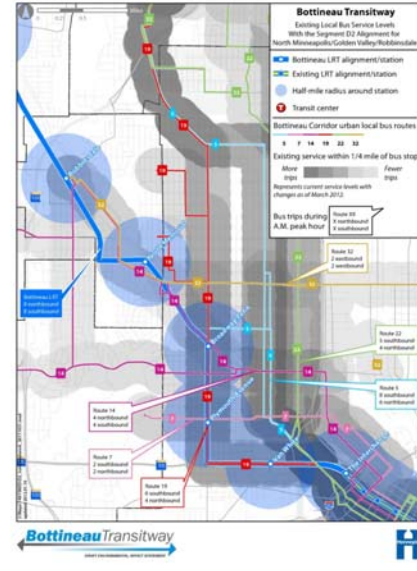
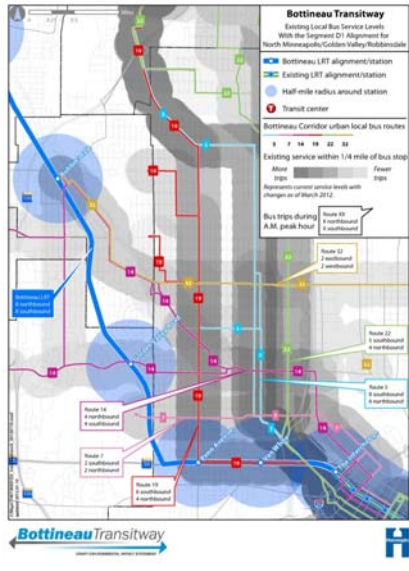
## Public Input/Comments

- 295 comments received
- Common comments
  - Social and economic Issues/relocation
  - Property values
  - Noise and vibration
  - Traffic and parking
  - Parks and trails
  - Environmental
  - Transit system elements – stations, alignment, mode

4

# Input from Other Stakeholders

- Cities
- Government Agencies
- Businesses
- Organizations



## Ridership Forecasts

Alignment	Mode	Ridership Forecast*	User Benefits**
A-C-D1	LRT	27,600	9,460
A-C-D2	LRT	27,200	9,000
B-C-D1	LRT	27,000	8,520
B-C-D2	LRT	26,000	7,940
B-C-D1	BRT	19,900	5,880

\* 2030

\*\* 2030 daily (weekday) hours

7

## Scoping Decision vs. LPA

### Scoping Decision

- Why study transit improvements?
- Which alternatives?
- Evaluation methods
- LPA will be one of, but not the only alternative identified and studied in the Draft EIS

### LPA

- Defines transit mode and alignment
- Needed to pursue New Starts funding
- PAC, HCRRA, corridor cities must pass resolutions of support
- Met Council adopts into TPP

8

## Next Steps and Schedule

### Scoping Decision Process (blueprint for EIS)

- ARCC and CAC – discussion of scoping decision: 04/17, 04/19
- PAC – recommendation on scoping decision: 04/23
- HCRRA – resolution on scoping decision: 05/08

9

## Next Steps and Schedule

### Locally Preferred Alternative (LPA) Process

- ARCC and CAC input on LPA recommendation: 05/01, 05/03
- PAC public hearing and LPA resolution: 05/10, 05/30
- HCRRA public hearing and LPA recommendation: 06/12, 06/26
- Met Council briefing on LPA: July
- Met Council public hearing on TPP amendment: October
- Met Council action on TPP amendment: Late 2012

10

## Other Related Work

### Corridors of Opportunity

- African Career, Education, and Resource, Inc. (ACER)
- Asian Economic Development Association
- Asian Media Access
- Harrison Neighborhood Association

### Northside Transportation Network

11

## Bottineau Transitway

More Information/Contact:

[www.bottineautransitway.org](http://www.bottineautransitway.org)



12