



**METROPOLITAN COUNCIL
TRANSIT-ORIENTED
DEVELOPMENT (TOD)
STRATEGIC ACTION PLAN**

Allison Bell

March 26, 2012

TODAY'S AGENDA

- What are the objectives of the TOD Strategic Action Plan?
- Why is the Council undertaking it?
- What is the process?
- Who will be involved and how?
- What will we have to show for it in 2013?



THE PLAN WILL HELP THE COUNCIL
REORGANIZE AND WORK WITH PARTNERS TO
REACH AN OVER-ARCHING GOAL

More transit-oriented development in the region

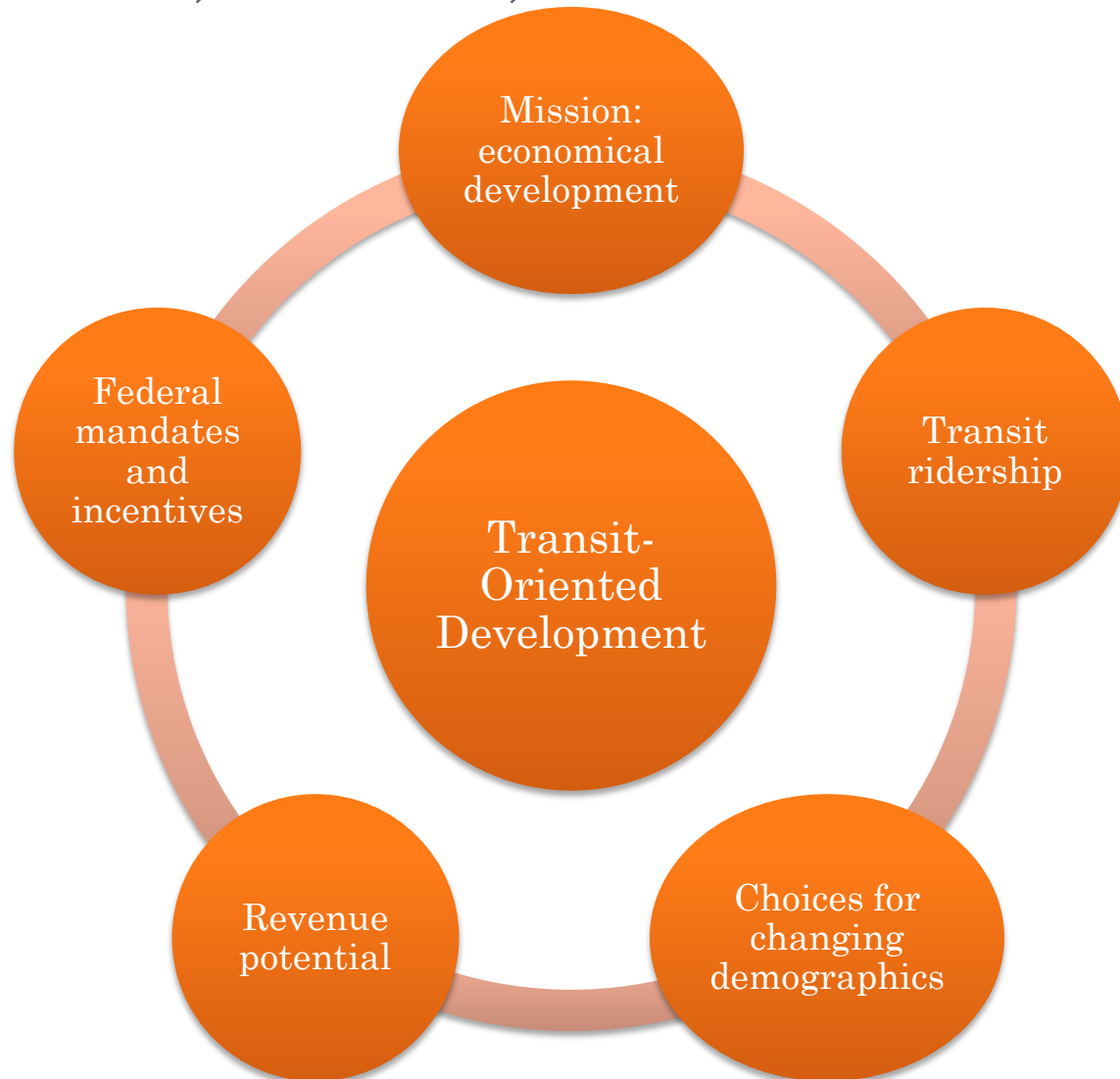
Coordinate and
align existing
Council
functions

New roles for
the Council

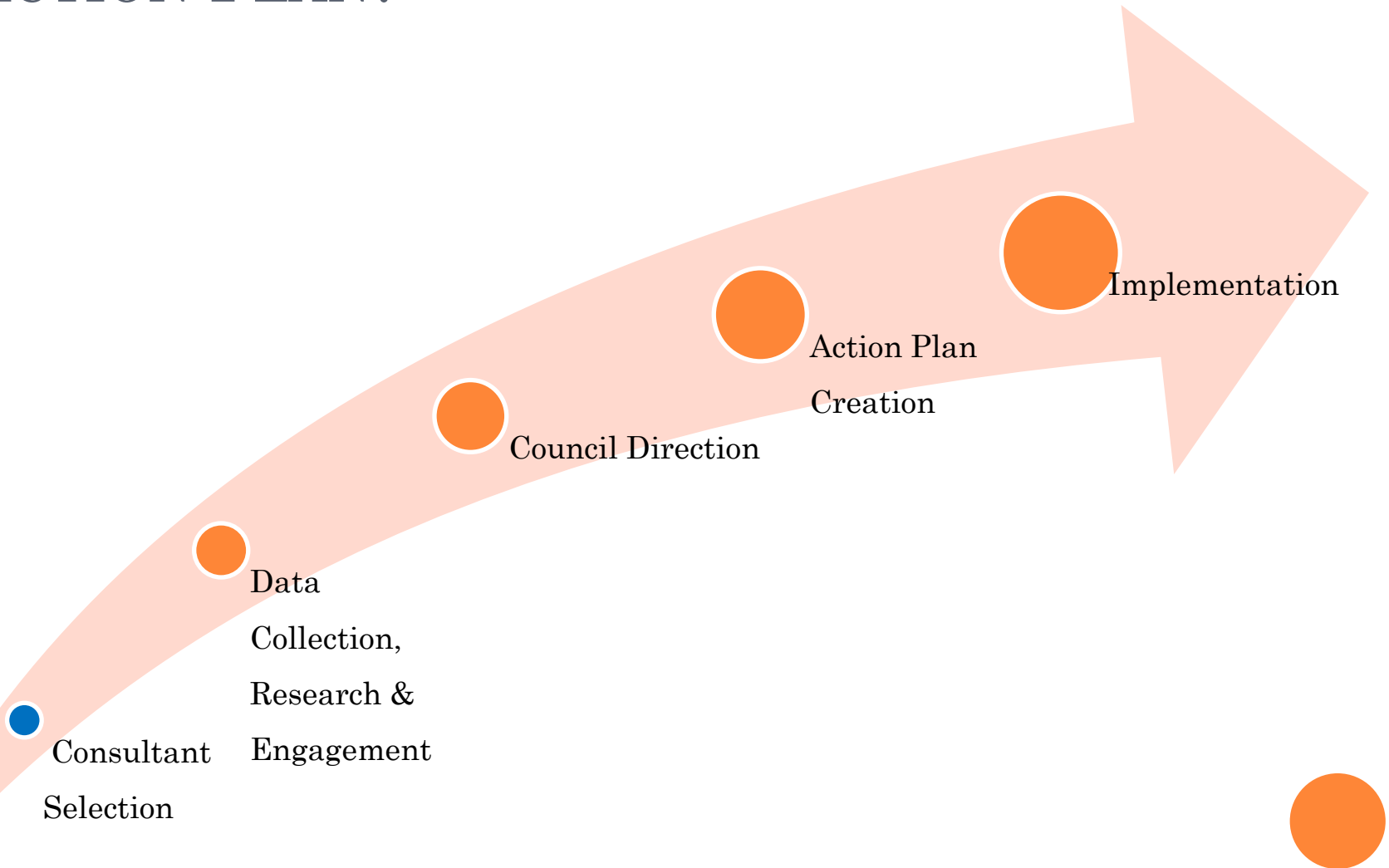
Detailed
implementation
plan



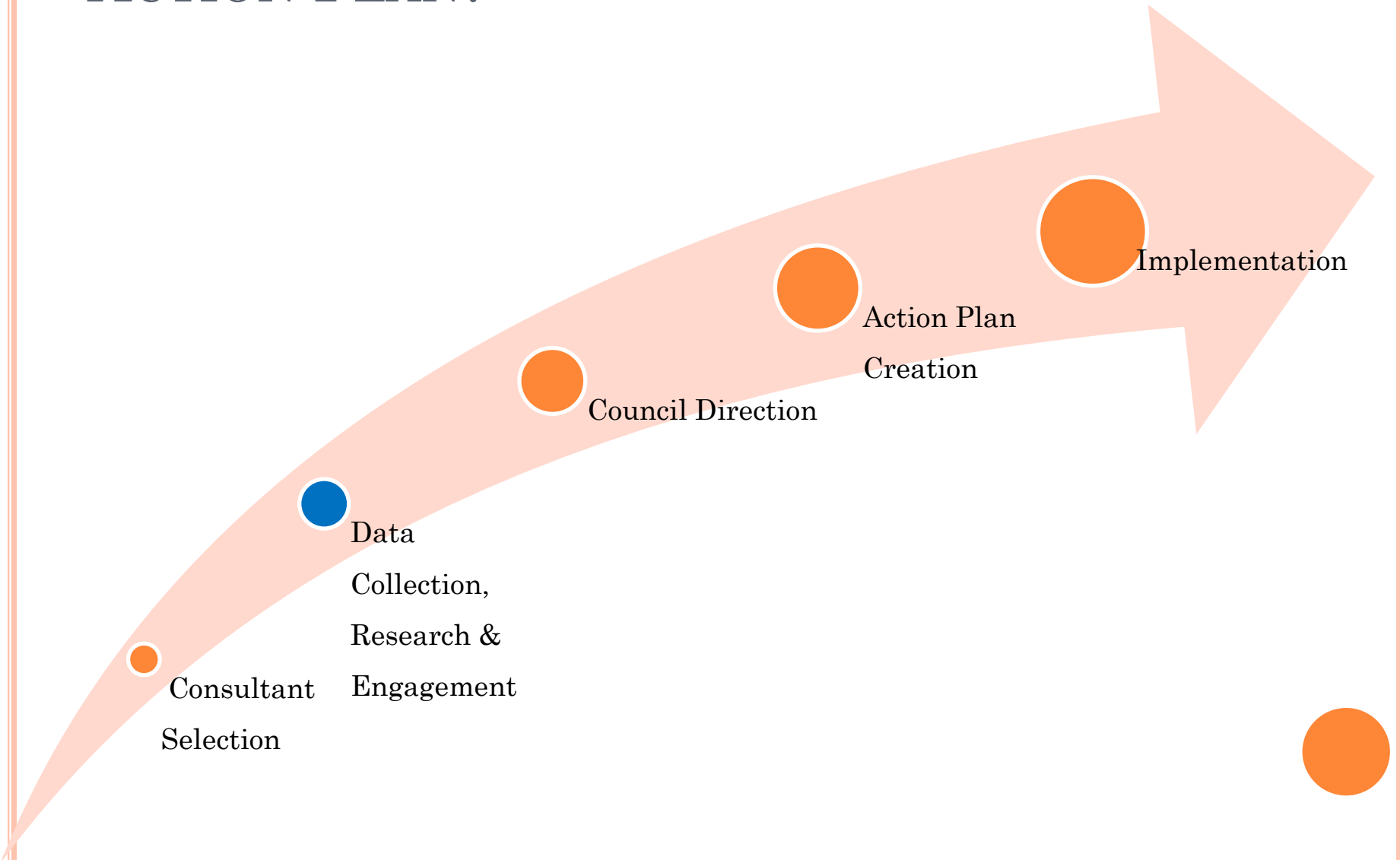
WHY TOD, WHY US, AND WHY NOW?



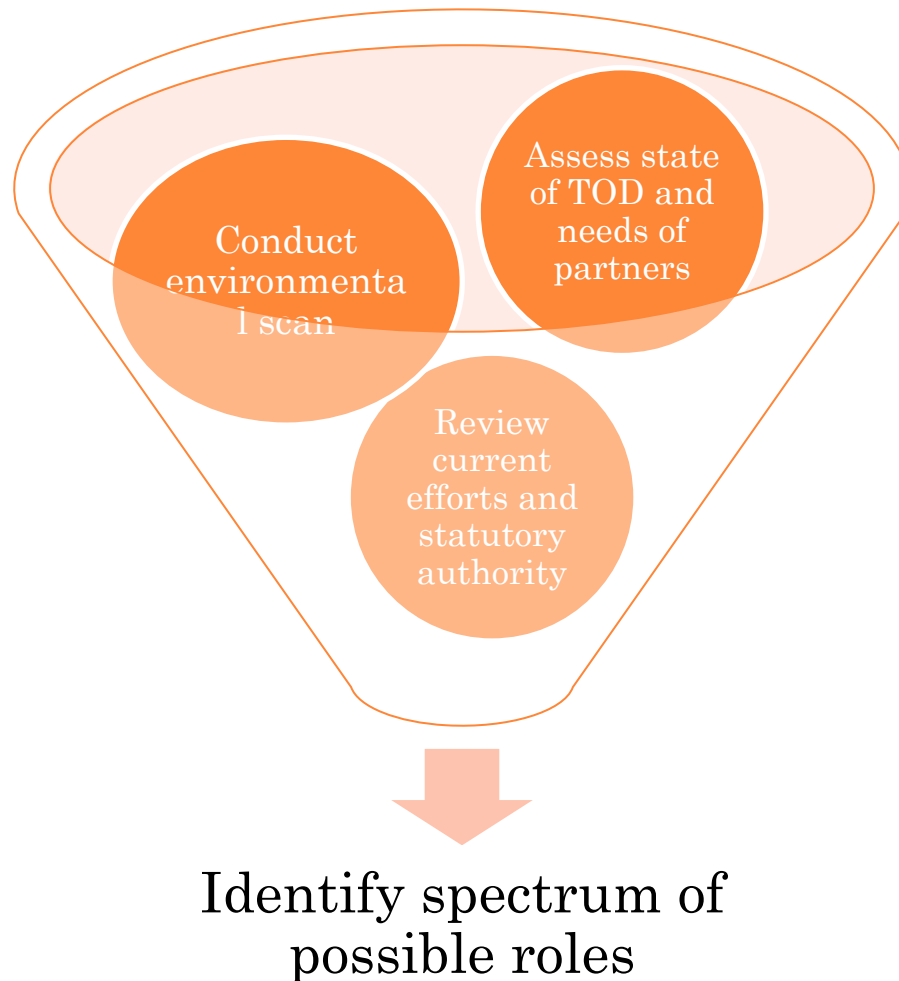
WHAT IS THE PROCESS FOR IMPLEMENTING THE TOD STRATEGIC ACTION PLAN?



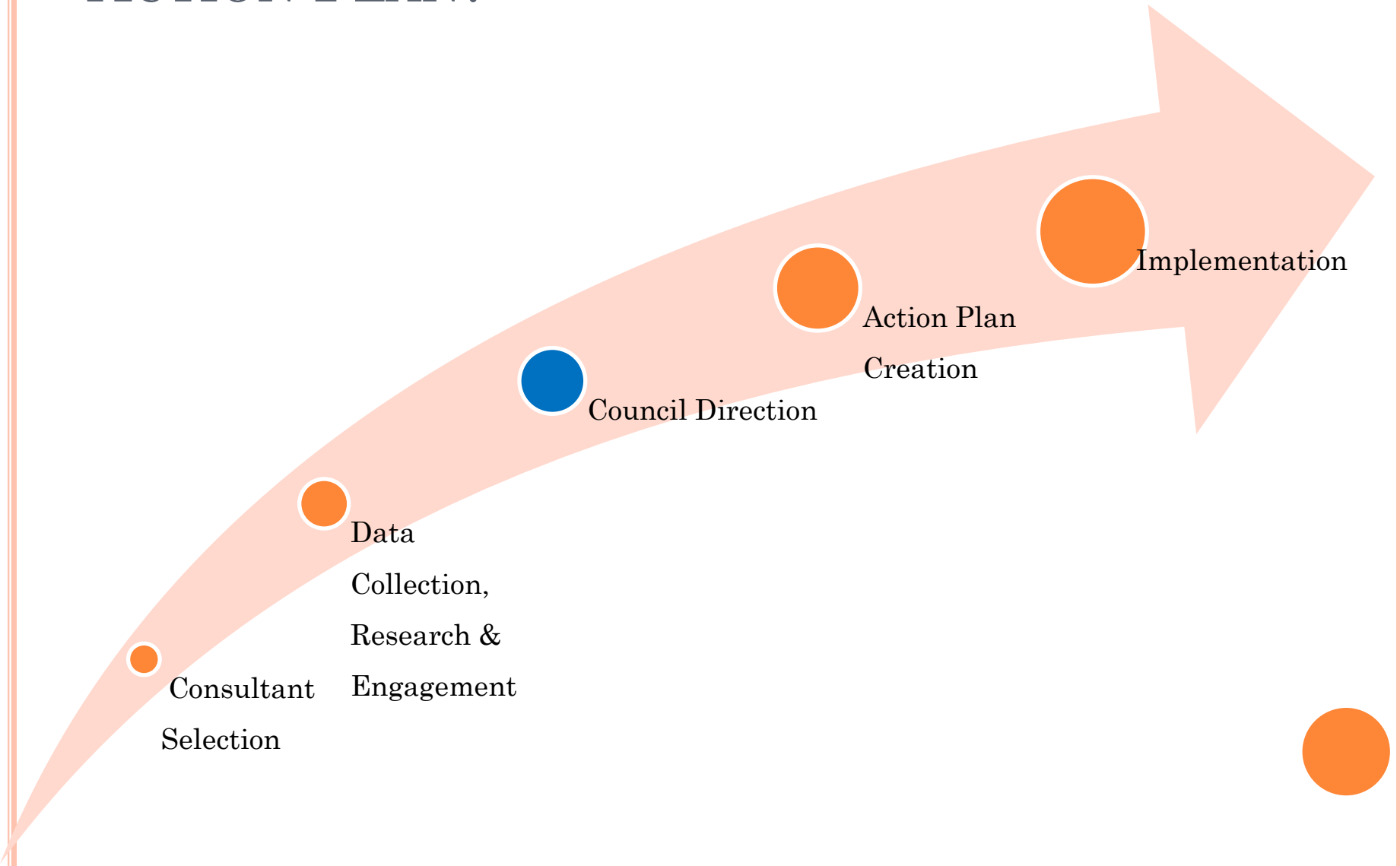
WHAT IS THE PROCESS FOR IMPLEMENTING THE TOD STRATEGIC ACTION PLAN?



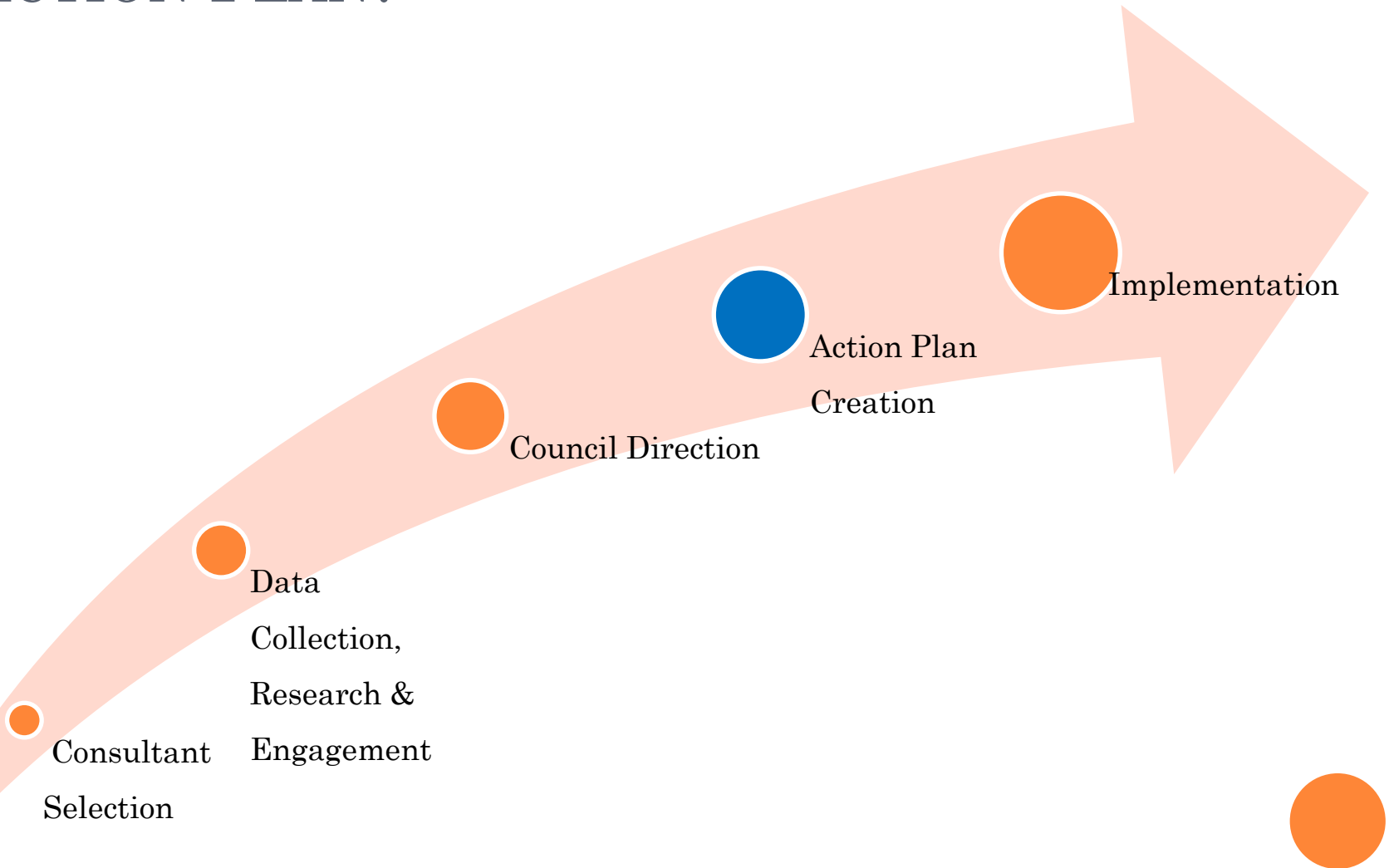
THE CONSULTANT WILL WORK WITH STAFF AND ADVISORS TO COLLECT INFORMATION AND GATHER INPUT



WHAT IS THE PROCESS FOR IMPLEMENTING THE TOD STRATEGIC ACTION PLAN?



WHAT IS THE PROCESS FOR IMPLEMENTING THE TOD STRATEGIC ACTION PLAN?



THE STRATEGIC ACTION PLAN WILL OPERATIONALIZE THE COUNCIL'S DIRECTION

Objective

Policy basis or
recommendation

Council roles &
activities

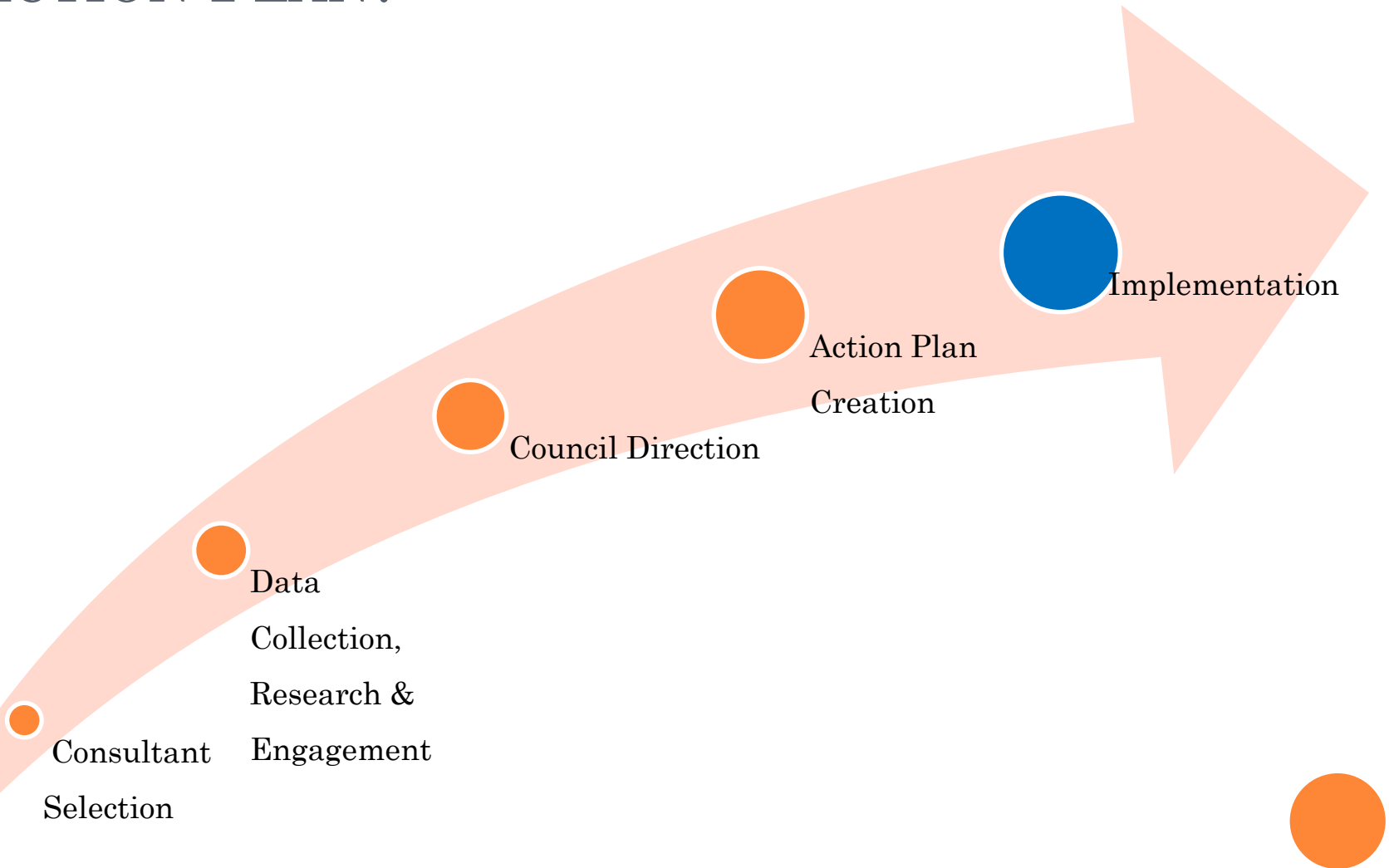
Required
resources

Organizational
structure

Timeline for
implementation



WHAT IS THE PROCESS FOR IMPLEMENTING THE TOD STRATEGIC ACTION PLAN?



WHO WILL BE INVOLVED PRIOR TO COUNCIL DIRECTION?

Advisors

Important external perspectives

Interviews and small group discussions

Creates “buy-in”

Project Management Team

Appointed by Executive Team

TOD experts and implementers

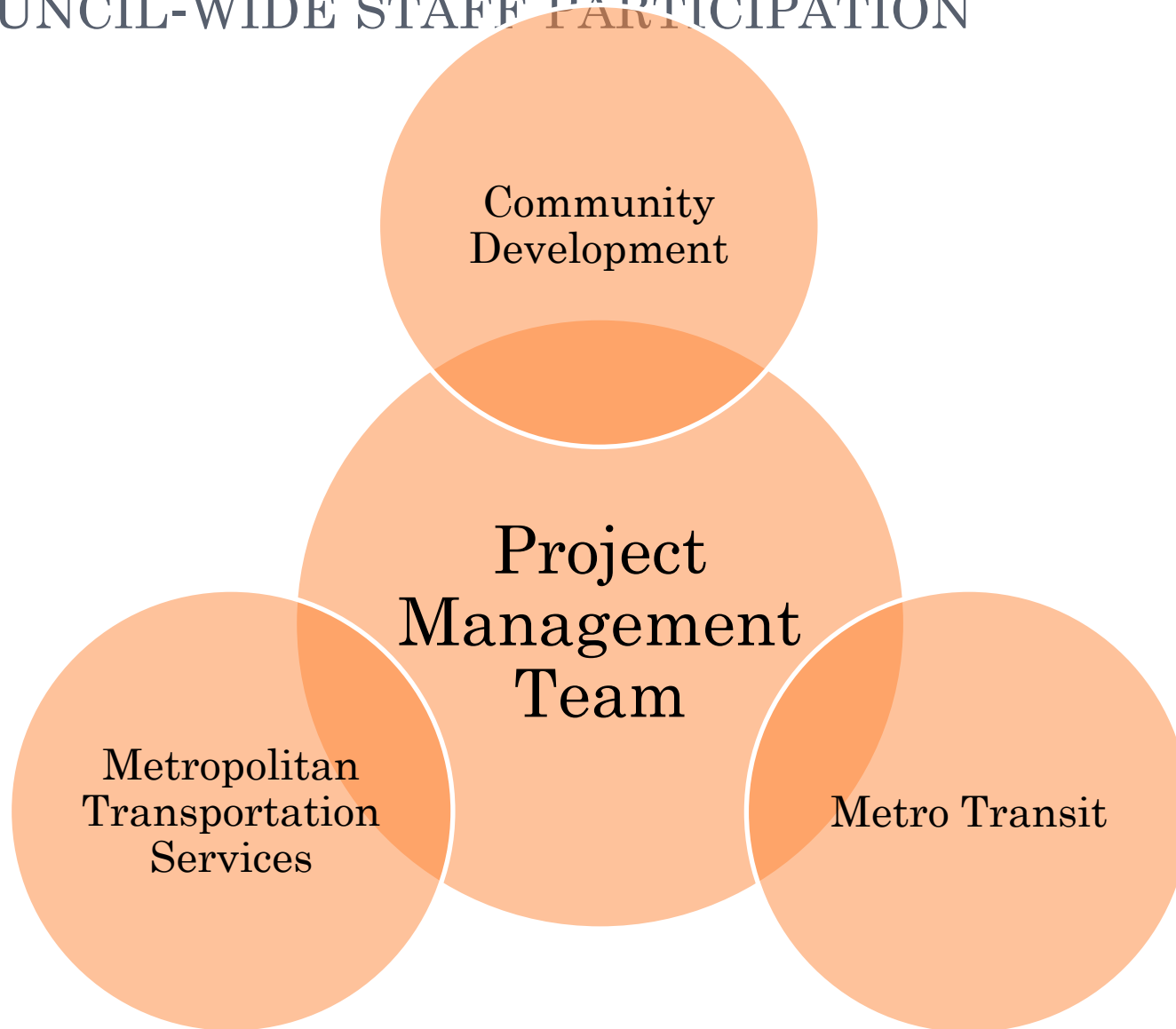
Plans for change across divisions

Executive Team

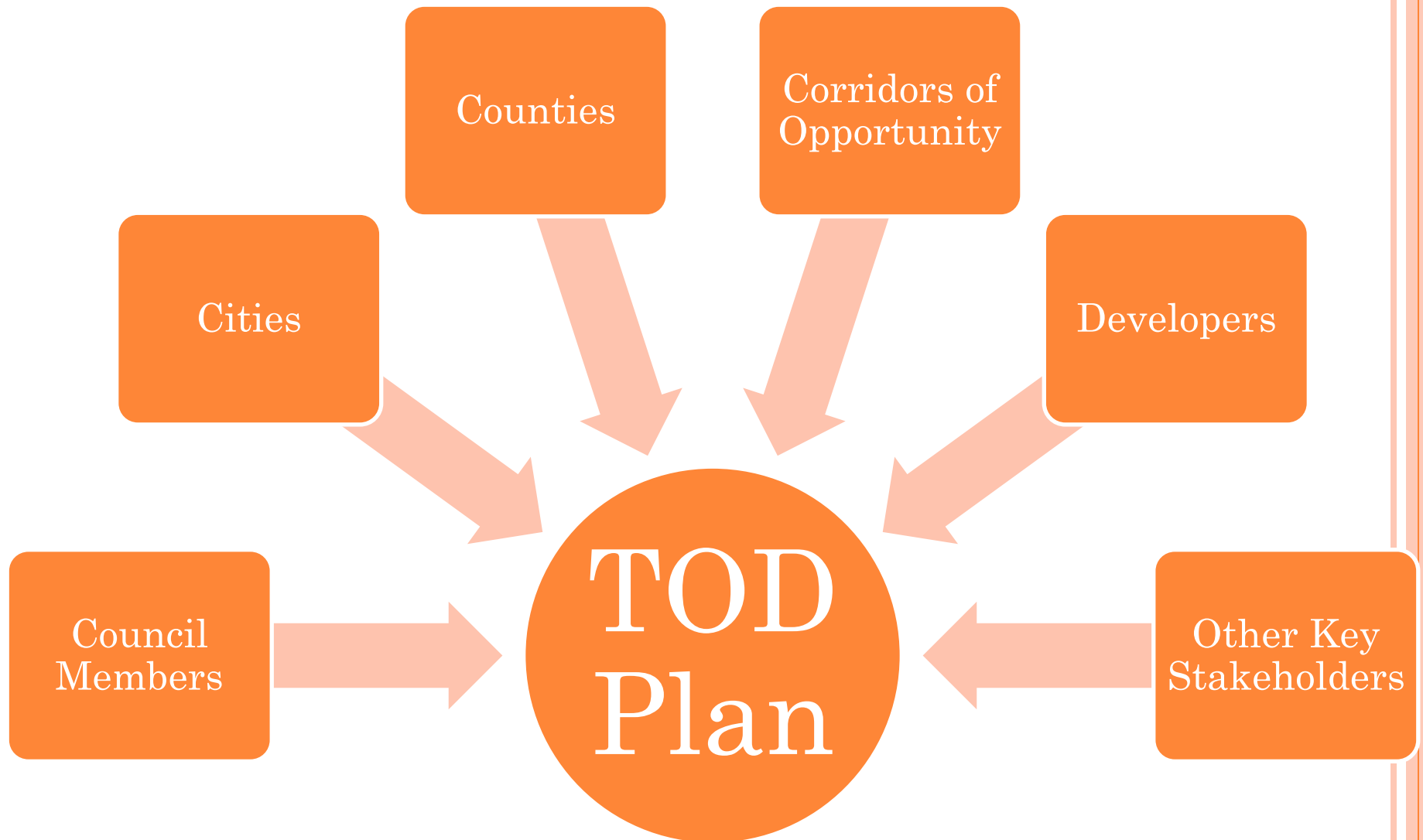
Meets monthly

Provides overall guidance

THE PROJECT MANAGEMENT TEAM WILL INTEGRATE PERSPECTIVES AND ENSURE COUNCIL-WIDE STAFF PARTICIPATION



KEY STAKEHOLDERS WILL ADVISE THE DEVELOPMENT OF THE PLAN



WHAT WILL RESULT FROM THIS EFFORT BY 2013?

The Council works with its partners to create more transit-oriented development in the region

Better-aligned and coordinated functions related to TOD

New roles for existing and newly-hired staff

TOD vision and direction from leadership

Enhanced partnerships



ALLISON.BELL@METC.STATE.MN.US

651-602-1363

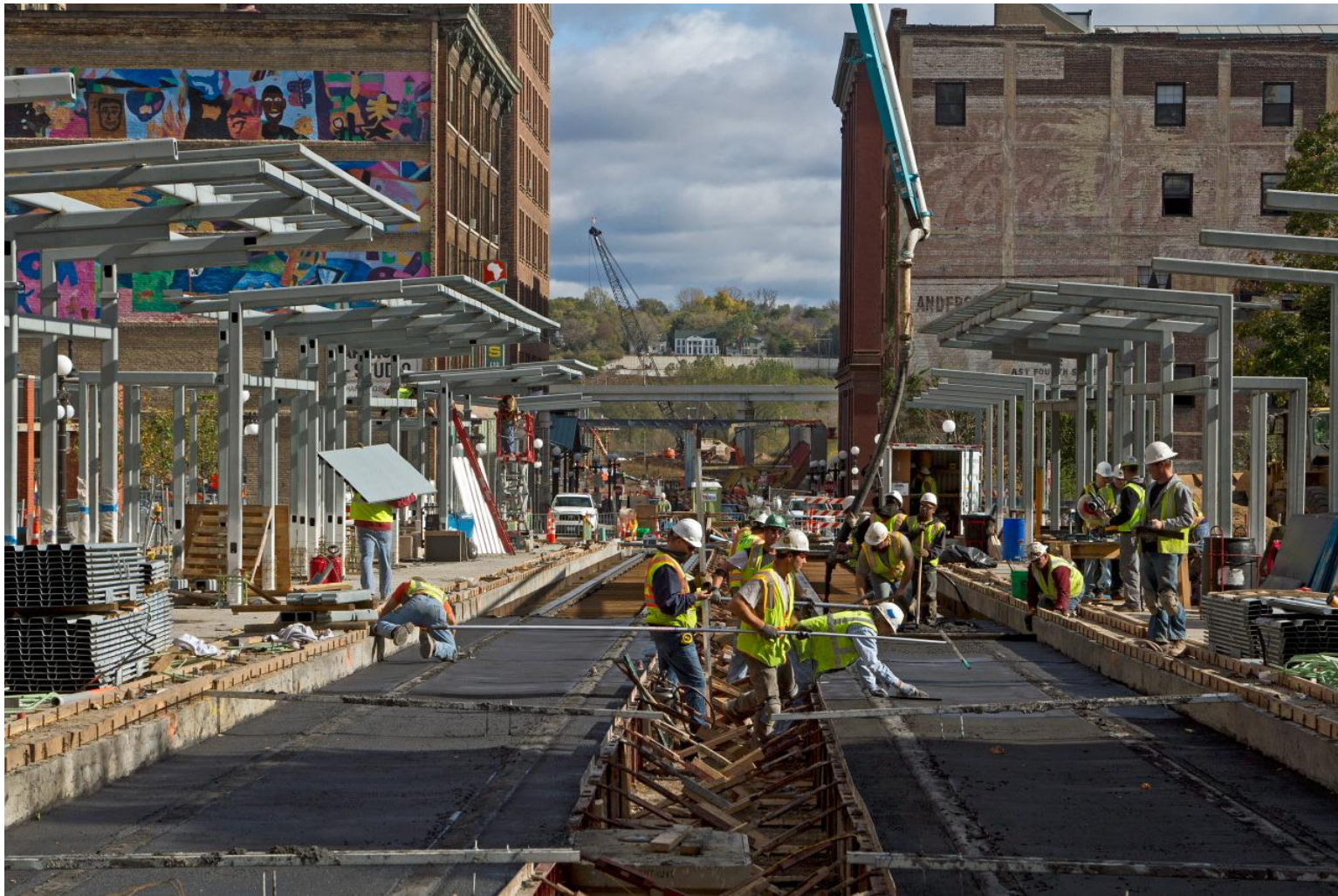


Photo: Steve Glischinski, TRAINS magazine

