

Central Corridor Light Rail Transit

Transportation Committee
Lessons Learned
February 13, 2012



*Improving
mobility*

*Easing
congestion*

*Strengthening
our communities*

Today's Topics



- Recap “Lessons Learned” process
- Review lessons learned
 - Vehicle traffic and access
 - Pedestrian access
 - Outreach
- Discussion



- Internal meetings in January
 - CCPO staff
 - CCPO staff with contractors
- External
 - 1/23 Business roundtable
 - 1/27 Business Resources Collaborative
 - 1/27 University of Minnesota
 - 2/1 PAC
 - 2/8 CCMC
 - 2/13 Transportation Cmte
 - 2/15 project partners elected officials

Central Corridor Light Rail Transit



Vehicle Traffic and Access

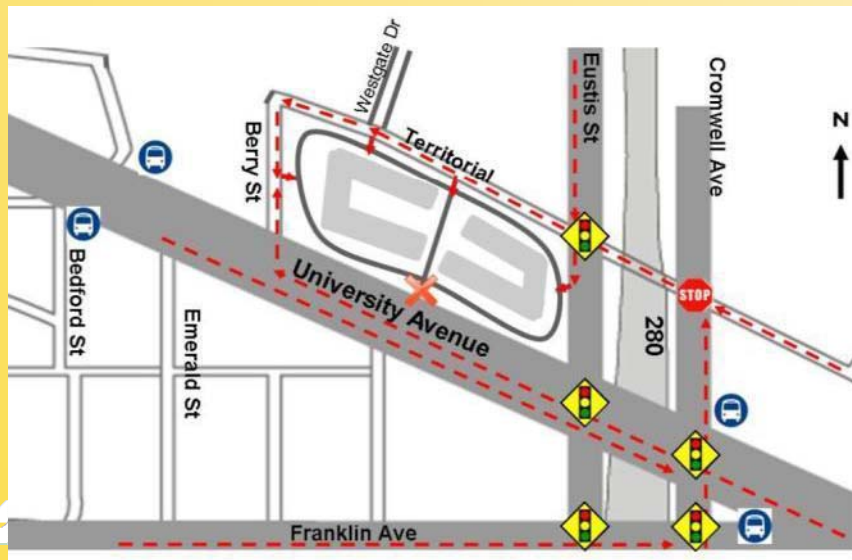
Issue: North/South Lane Restrictions

- Phased intersection construction to maintain thru traffic
- 2-3 month impact to intersection

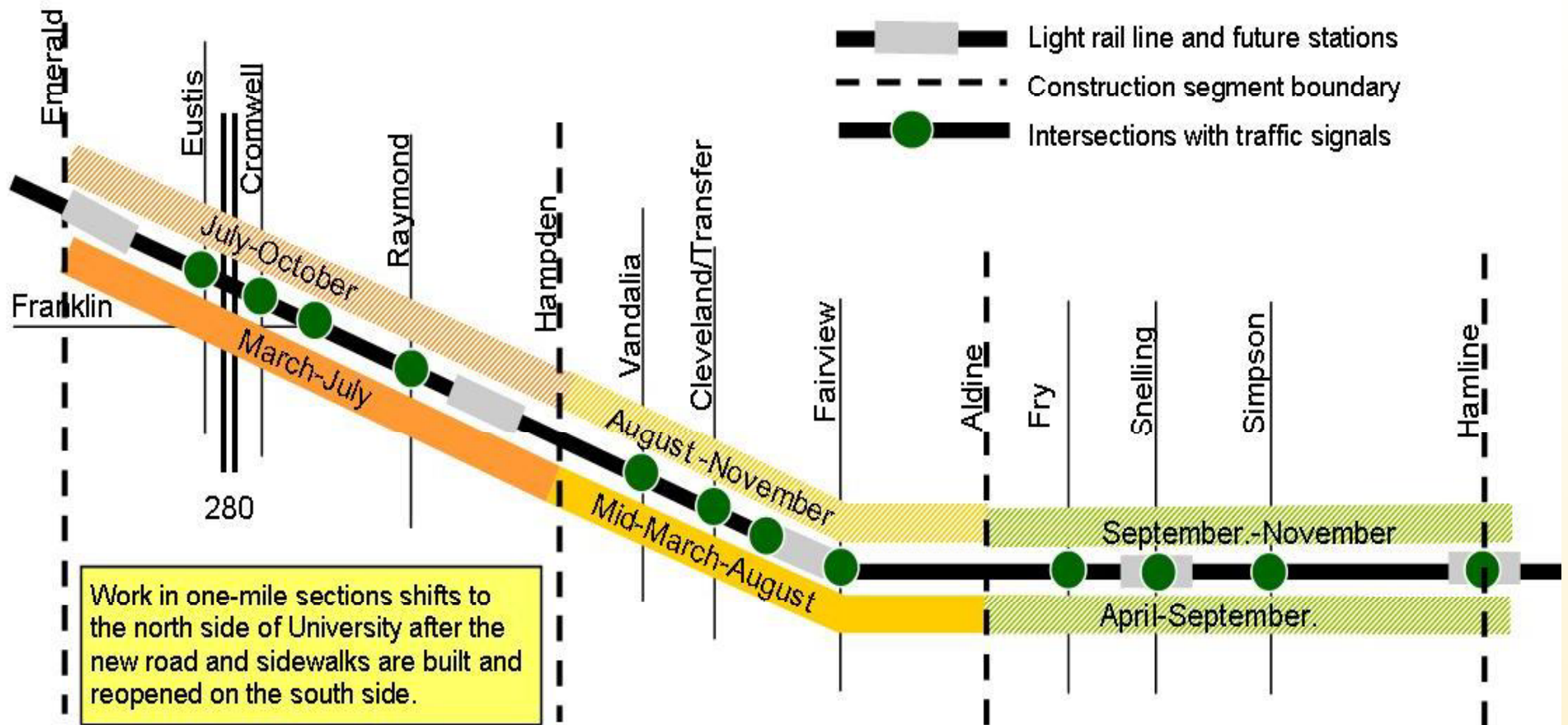


Action: Full Closure of Select Intersections

- Expedite work over 2-4 weeks
- Use variable message signs to provide detour directions
- Provide maps showing detours



Issue: Length of Work Zones

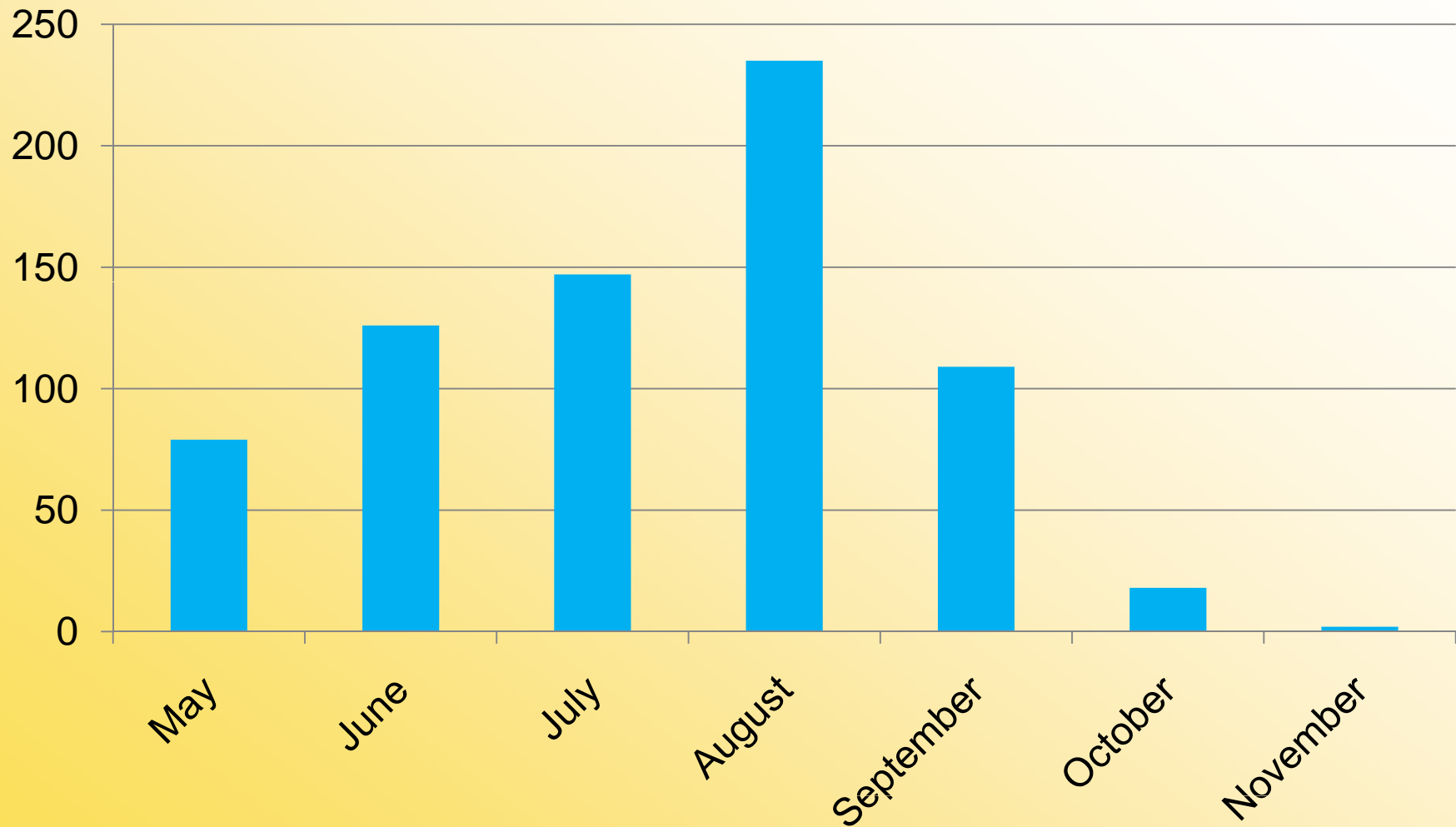


Issue: Idle work zones (CE)



Action: New Workers Added By Month

2011



Action: Link construction zone size with crew resources (CE)



Issue: Construction vehicles parked on private property, blocked access



Action: Continue to have inspectors track issues;
add CCPO staff



Issue: Signage



Action: Use proper signage



Central Corridor Light Rail Transit



Pedestrian Access

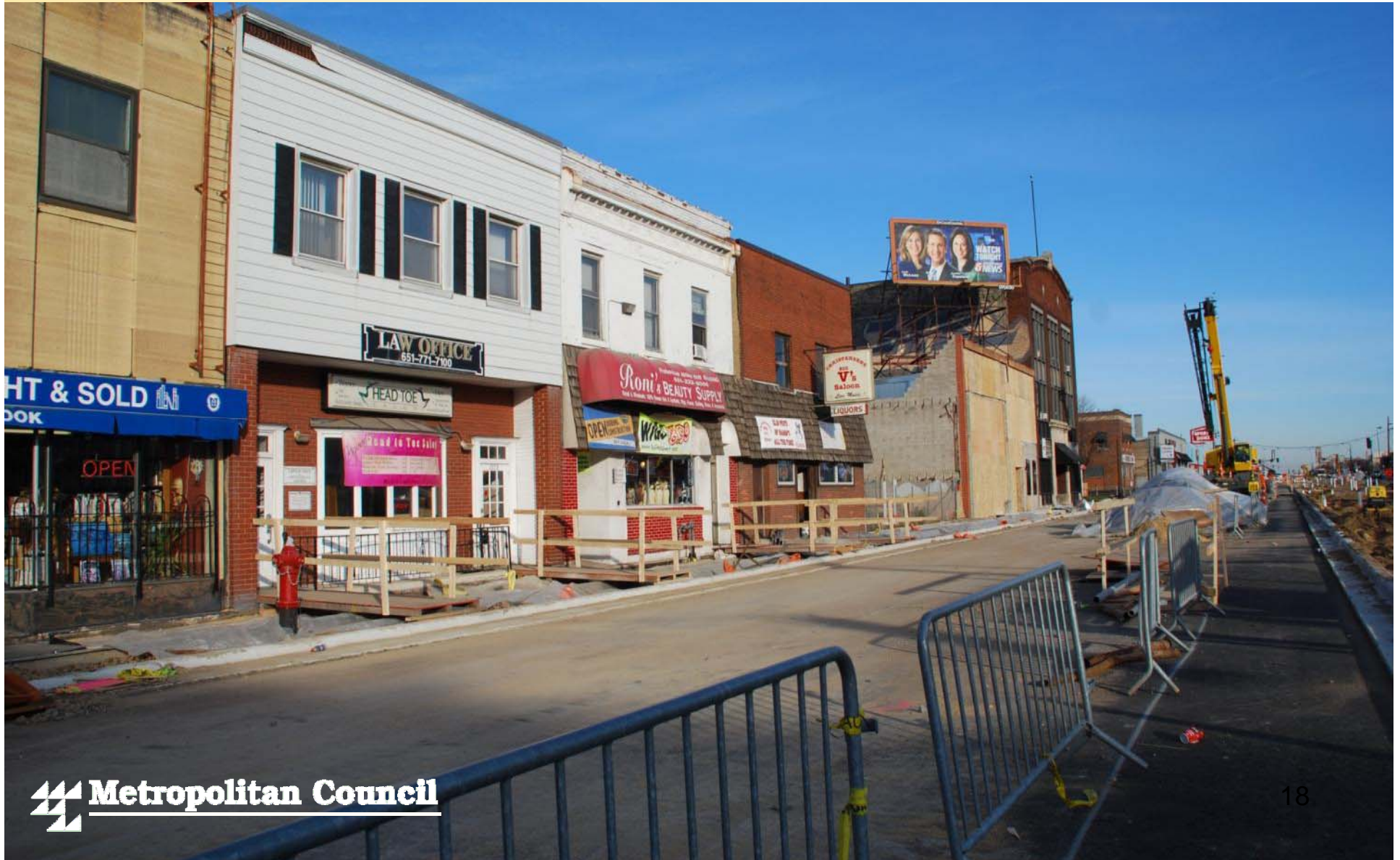
Issue: No Accessible Ramp to Bus Stop



Action: Temp bus stop with ramp and protective railings, barriers and trash cans



Issue: Utility installation and sidewalk replacement affected ped access



Action: Use ADA temp bridges to provide ped access during sidewalk construction

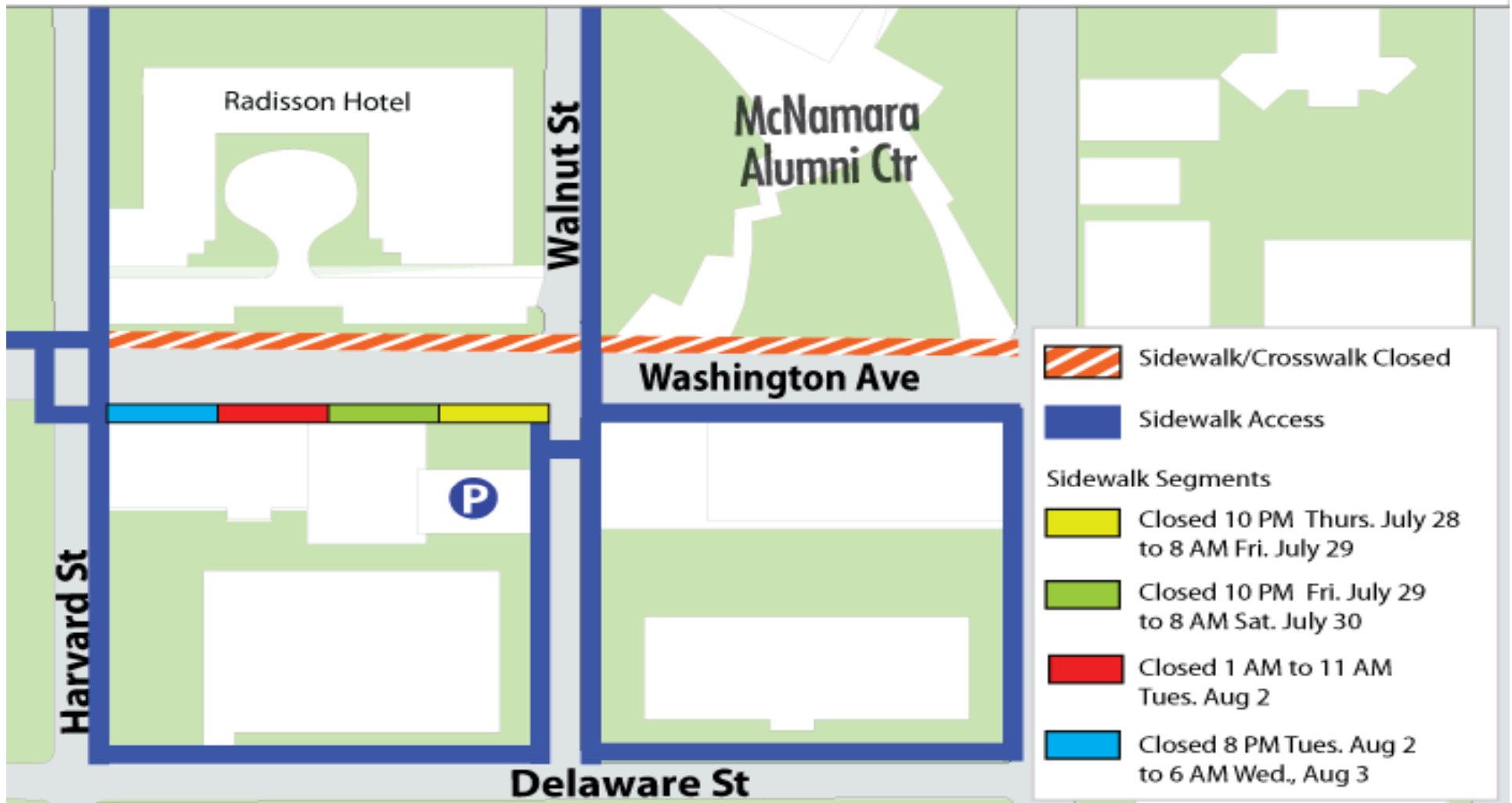


Action: Stage utility relocations and schedules to minimize business interruptions

Minneapolis East Bank - Harvard Street to Walnut Street

Pedestrian Detour for Overnight Utility Work

July 28 - August 2, 2011



Action: Stage utility relocations and schedules to minimize business interruptions



Issue: Confusing signage



Action: Use proper signage



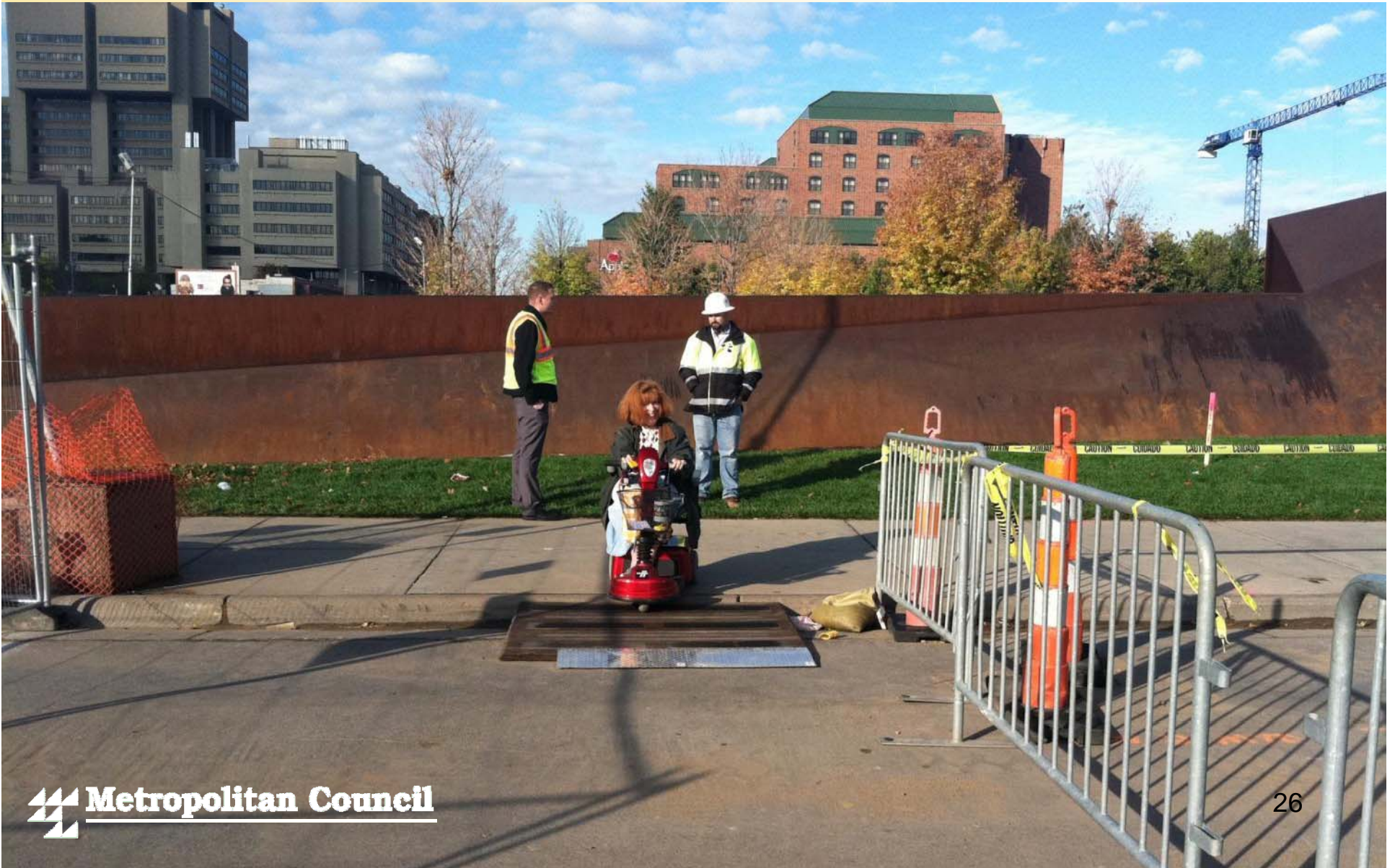
Issue: Maintaining Temporary Sidewalks and Access (CE)



Issue: Challenging Pedestrian Crossings



Action: Conduct ADA Field Checks



Central Corridor Light Rail Transit



Outreach

24-hour Hotline

- Over 100 signs posted throughout the corridor



Weekly Construction Updates

Central Corridor Light Rail Transit

St. Paul - University Avenue West Construction Update

April 16-22, 2011



Support corridor businesses: Dine out and catch a show



Dan Simonson (left) and James Thissen of Caffè Biaggio want passers-by to know that they can still dine at the Italian restaurant at 2356 University Ave. W. in St. Paul despite LRT construction on the street in front of them

For more ideas, go to: www.discovercentralcorridor.com or www.twitter.com/discoverclrt

Highlights and Upcoming Work

- Snelling is reduced to one lane in each direction between Spruce Tree and Sherburne; lanes shifted to west side of Snelling
- University at Snelling reduced to one lane in each direction on the south side of the road.
- Construction preparation along University between Aldine and Syndicate will start the week of April 18 and construction is anticipated to begin starting the week of April 25.
- Highway 280 will be closed April 29-May 2 for bridge work.
- Crews start work on retaining wall on south side of University between Prior and Cleveland; sidewalk on south side of University closed. Use sidewalk on the north side of University as alternate route.

University Avenue St. Paul West June 4-June 10

University Avenue: Fry to Hamline
150 day clock started on south side: April 21
Remaining: 108 days on south side



Traffic details

- Crews continue paving and working on the intersections of University with Berry, Eustis, Cromwell, and Franklin; watch for delays.
- Snelling between Spruce Tree and Sherburne reduced to one lane each way.
- Utility work begins on the east side of Hamline at the intersection with University; watch for lane shifts.
- Construction crews continue to work on east side of Raymond between University and Wabash; impacts include lane shifts and removal of on-street parking.
- University between Emerald and Hamline traffic shifted to north side of University onto three lanes: one eastbound, one westbound lane and a shared center lane for left turns.
- Twelve cross streets in the construction zone are signalized for full traffic movements: Eustis, Cromwell, Franklin, Raymond, Vandalia, Cleveland, Prior, Fairview, Fry, Snelling, Simpson and Hamline. These streets will be reduced to one lane each way at the intersection with University and some on-street parking will be removed to allow for lane shifts. All other cross streets south of University closed; signage directs vehicles to alternative access to businesses.
- Access to the Midway Shopping Center maintained from St. Anthony via Pascal, from University via Simpson and driveways off of Snelling and Hamline.



Working with businesses on access plans



“Open For Business” Signs

- Placement
- Durability



Central Corridor Light Rail Transit

More Information



Check out our website:

- www.centralcorridor.org

Contact the Central Corridor Project Office:

- 540 Fairview Avenue North
St. Paul, MN 55104
- Construction Hotline: 651-602-1404
- Comment Line: 651-602-1645
- Email: centralcorridor@metc.state.mn.us