

Central Corridor Light Rail Transit

Transportation Committee
January 9, 2012



*Improving
mobility*

*Easing
congestion*

*Strengthening
our communities*



Metropolitan Council

Today's Topics

- 2011 Construction Review
- DBE and Workforce Update



Central Corridor Light Rail Transit

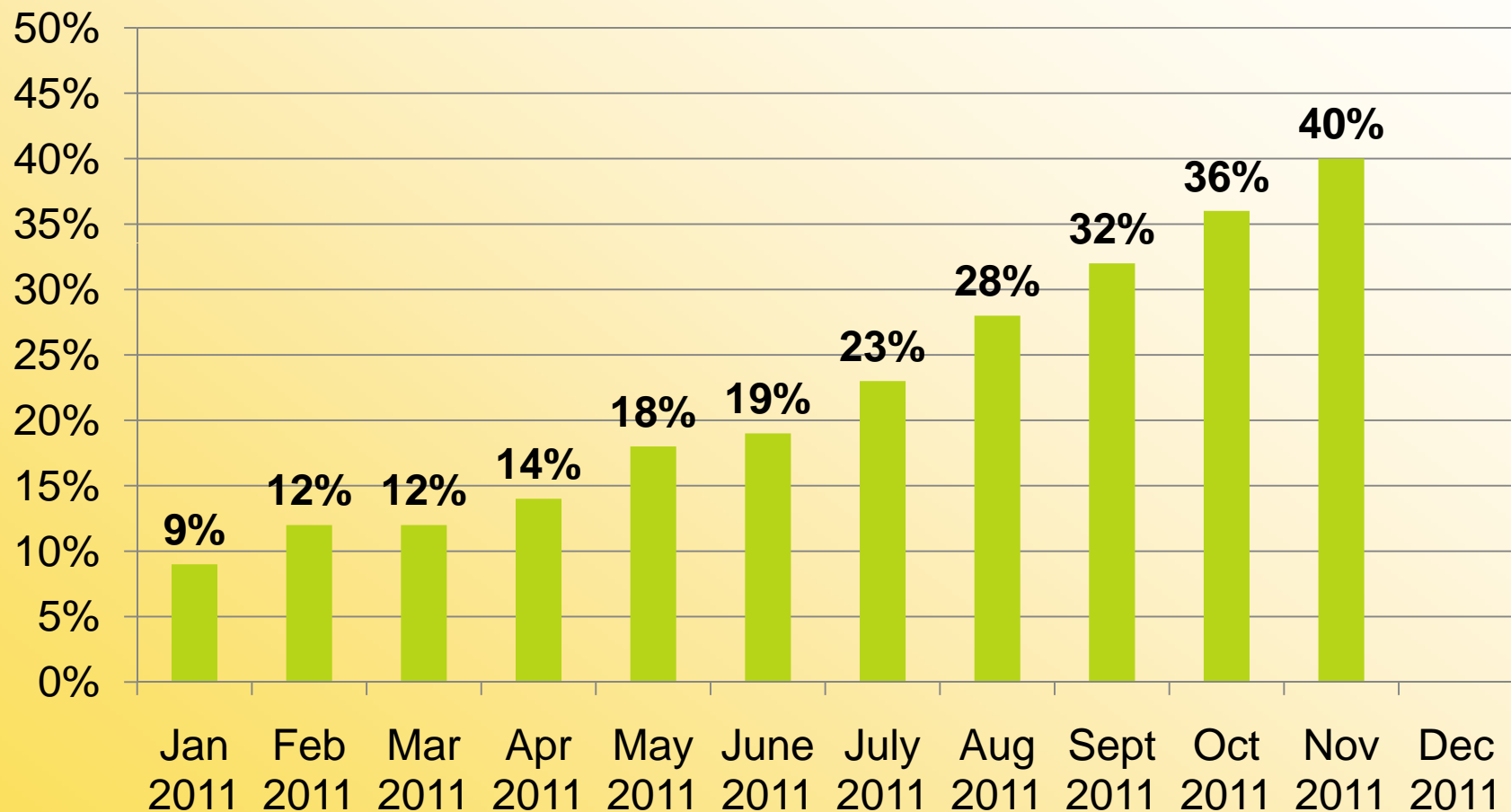


Construction Update

Work completed in 2011

Central Corridor Light Rail Transit

Construction Complete (through 11/30)



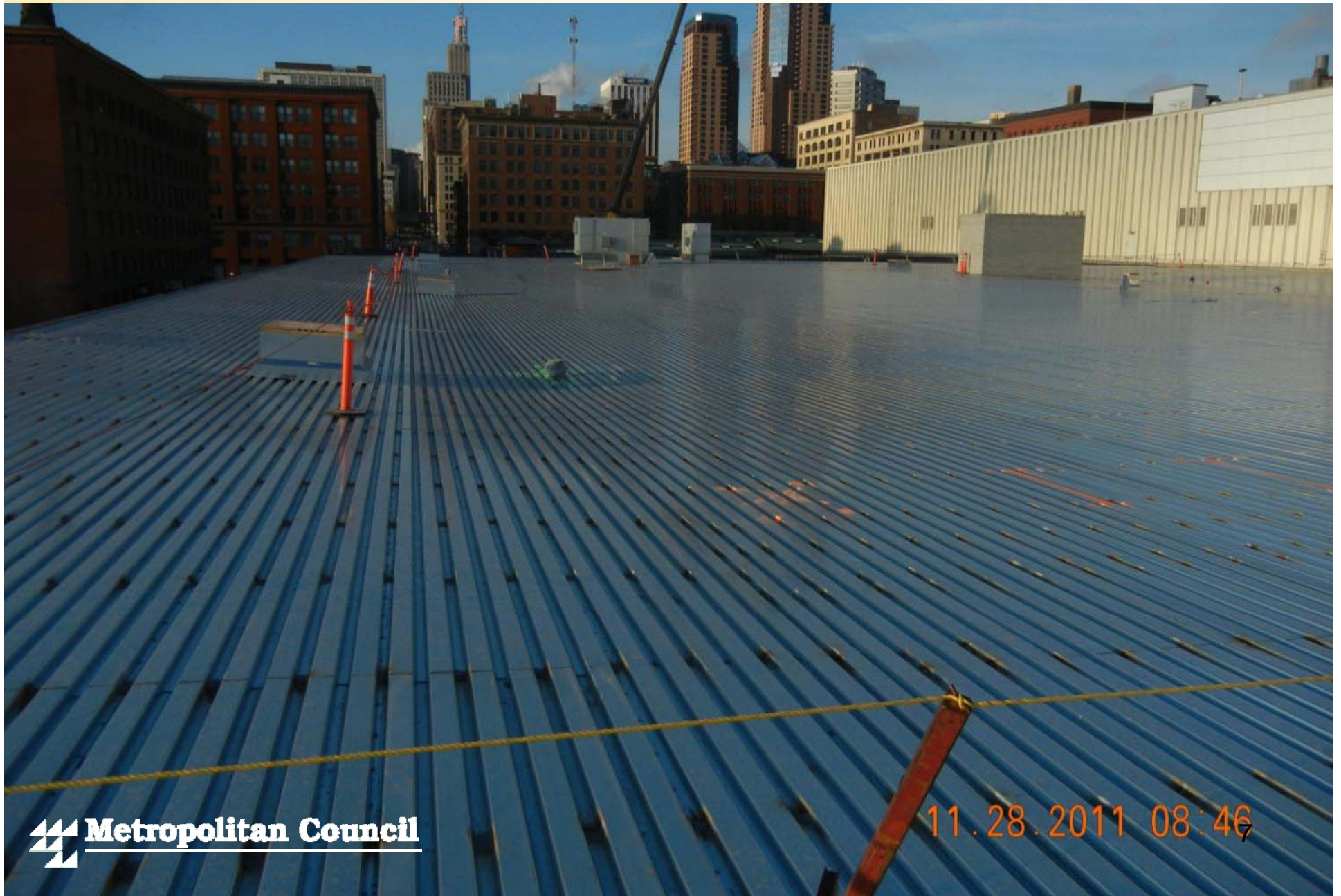
Operations and Maintenance Facility - September



Operations and Maintenance Facility- October



OMF: Roof Reconstruction – Nov 28



OMF –Poly Wall Being Installed in Bldg. C



Civil East: Union Depot Station



Civil East: Union Depot



Civil East: 4th Street Opened Nov. 14



Civil East: Skyway Opened Nov. 1



Civil East: Utility Work on Cedar Street



Civil East: Private Utility Work on 7th & Cedar Street



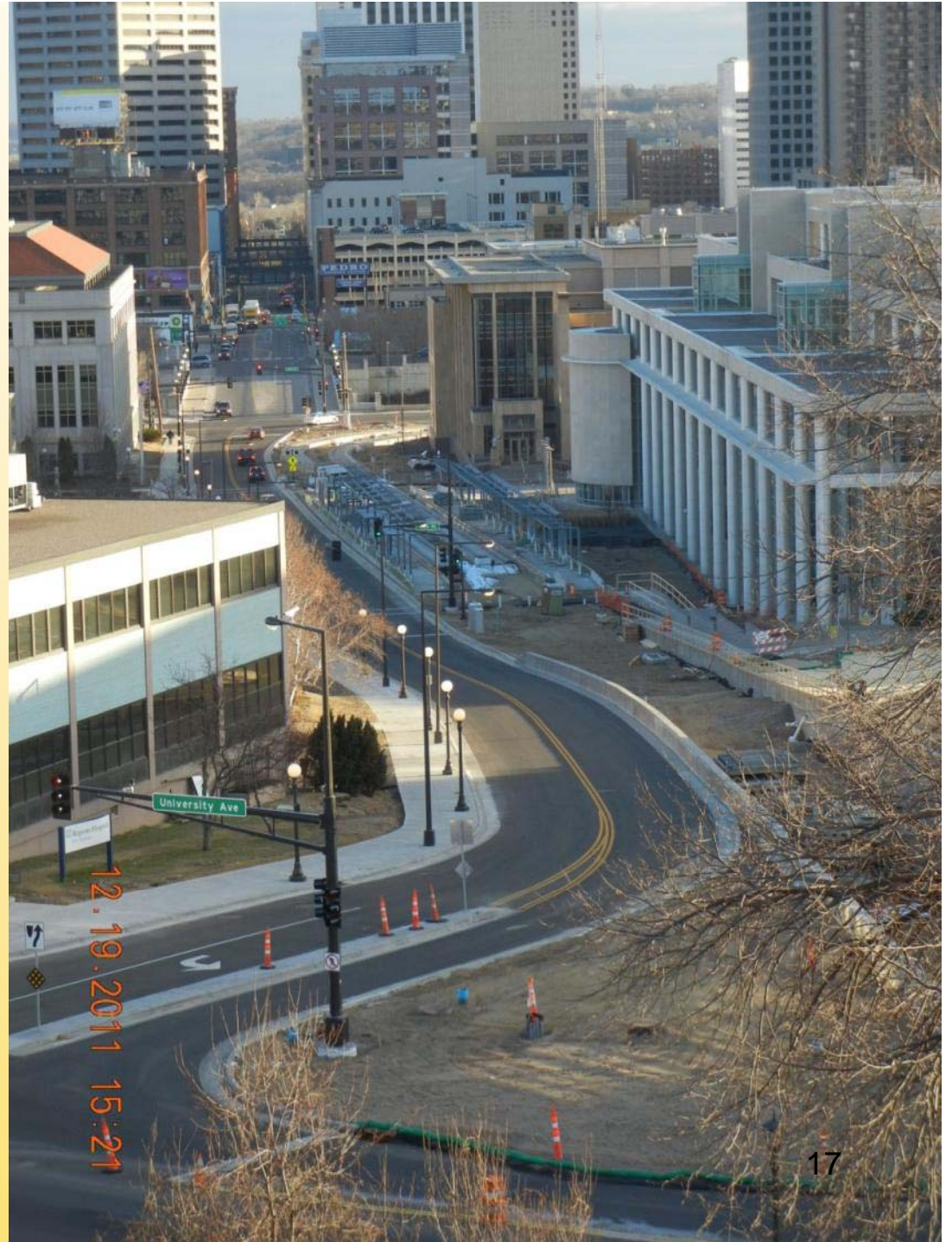
Civil East: Track at 12th and Robert



Civil East: Robert Street Station



Civil East: Robert Street



Civil East: University & Vandalia Opened Nov. 14



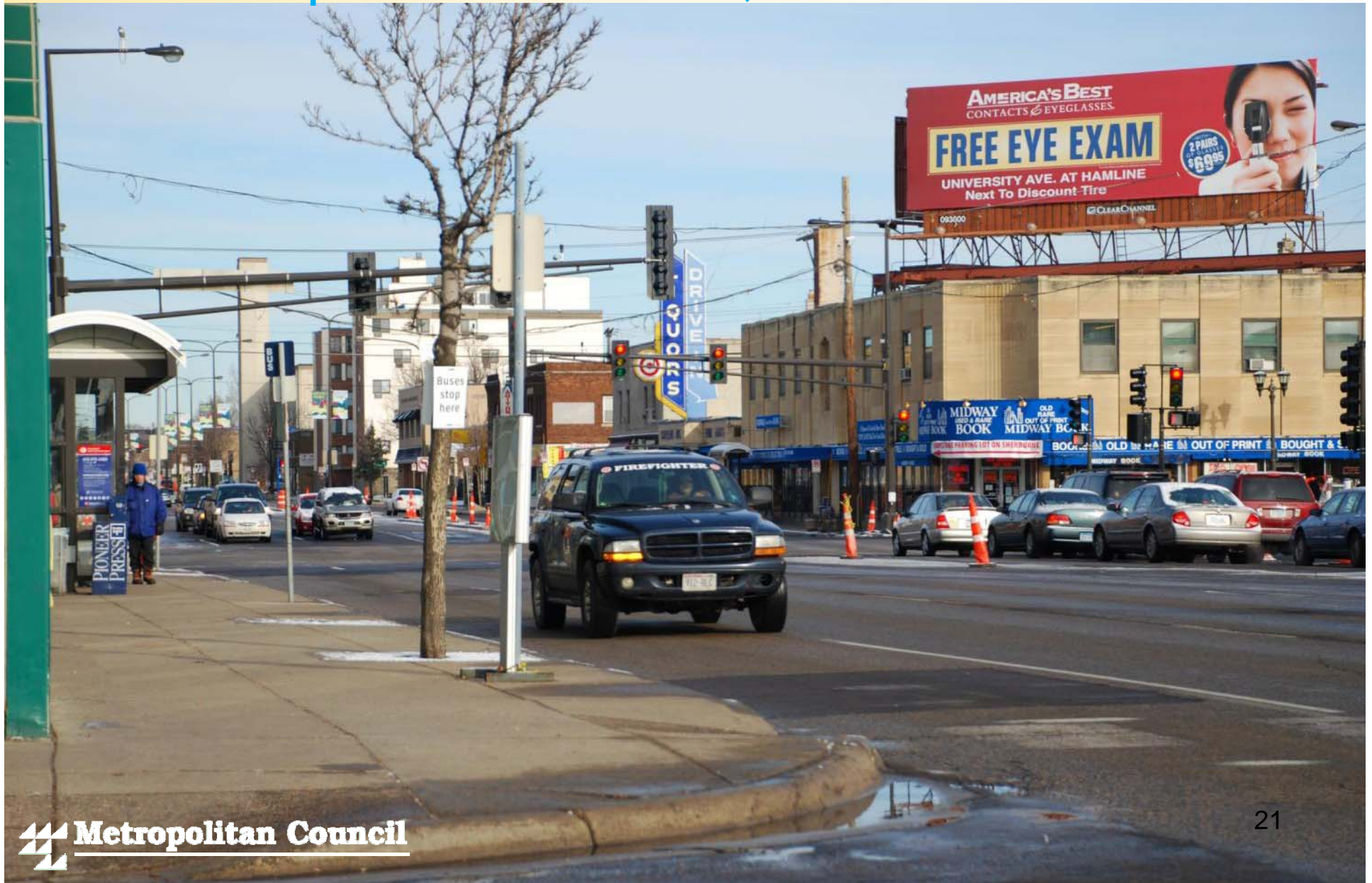
Civil East: Fairview & University New Sidewalk



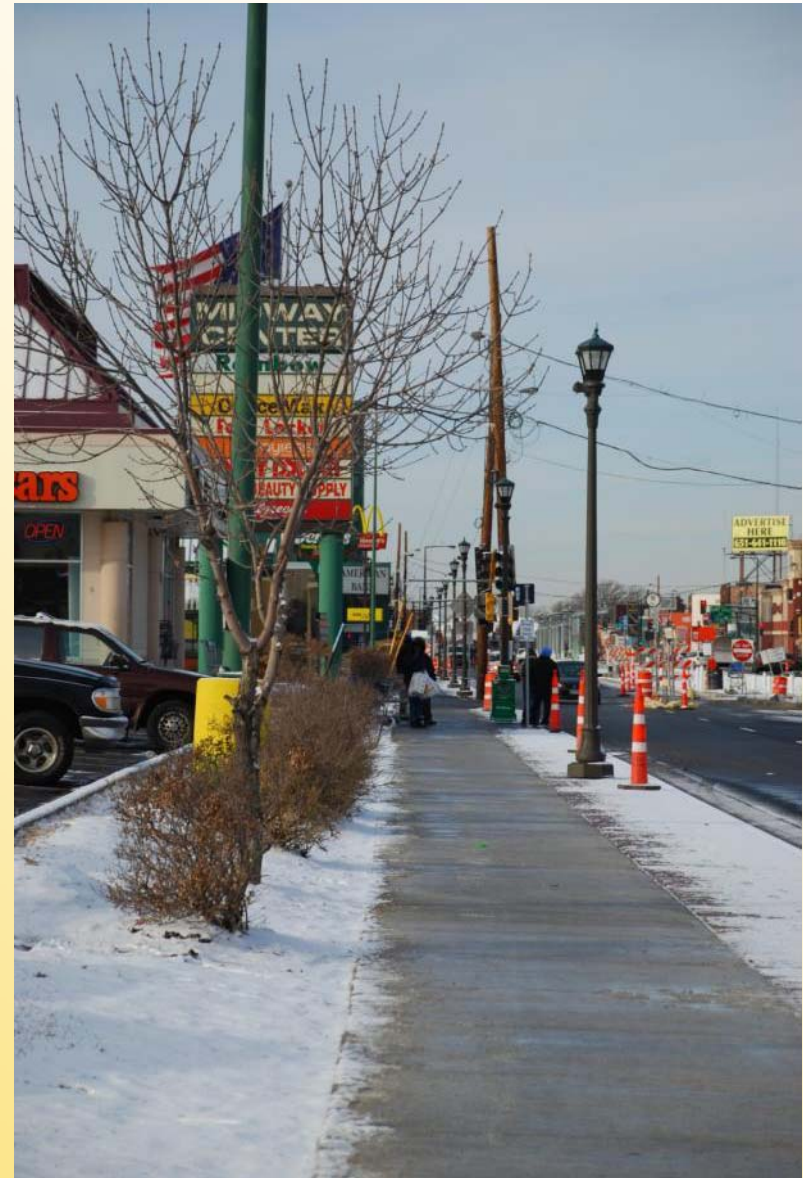
Civil East: Pedestrian Activated Signal Crossing



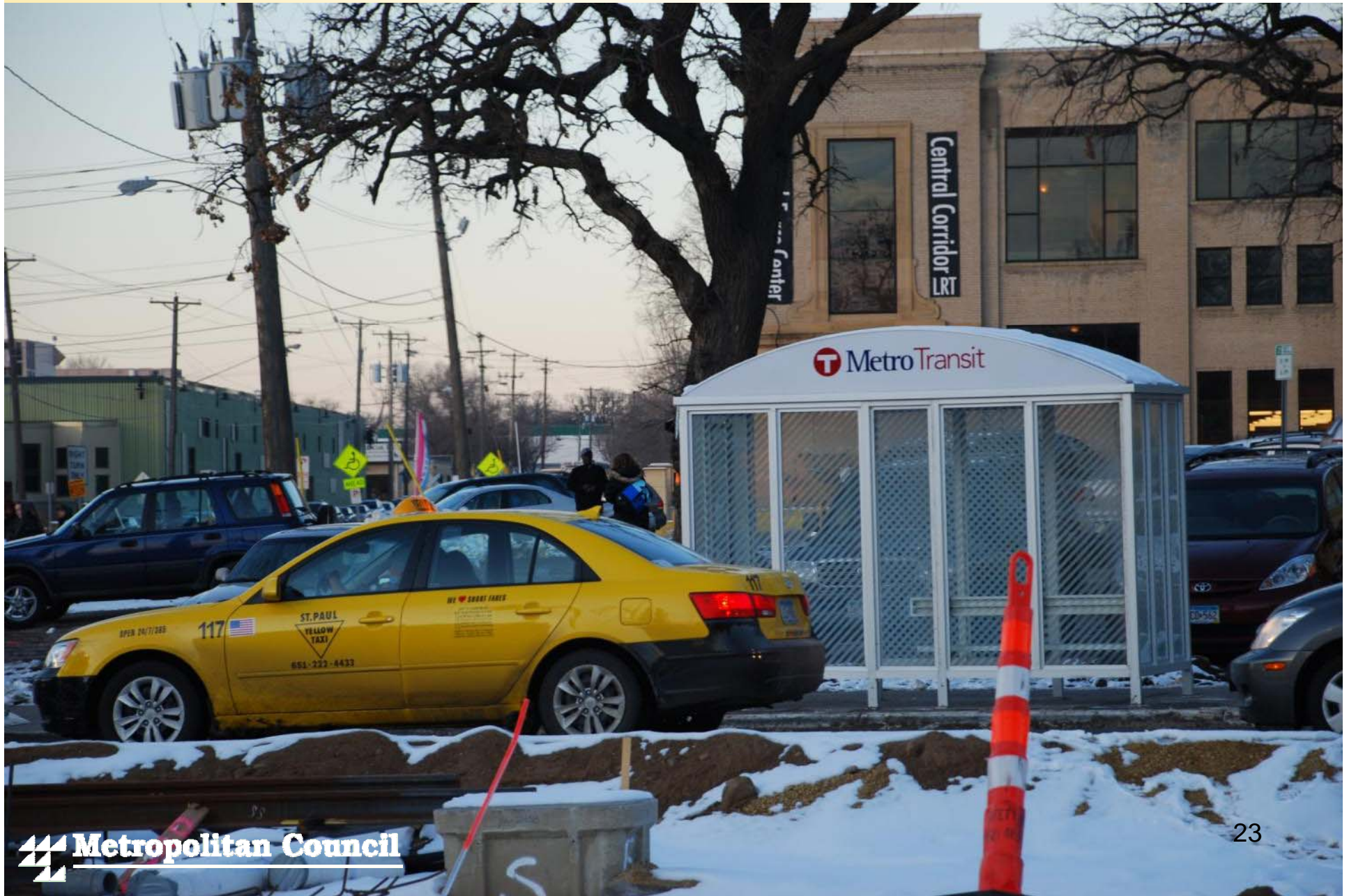
Civil East: Snelling & University Opened All Lanes, All Directions



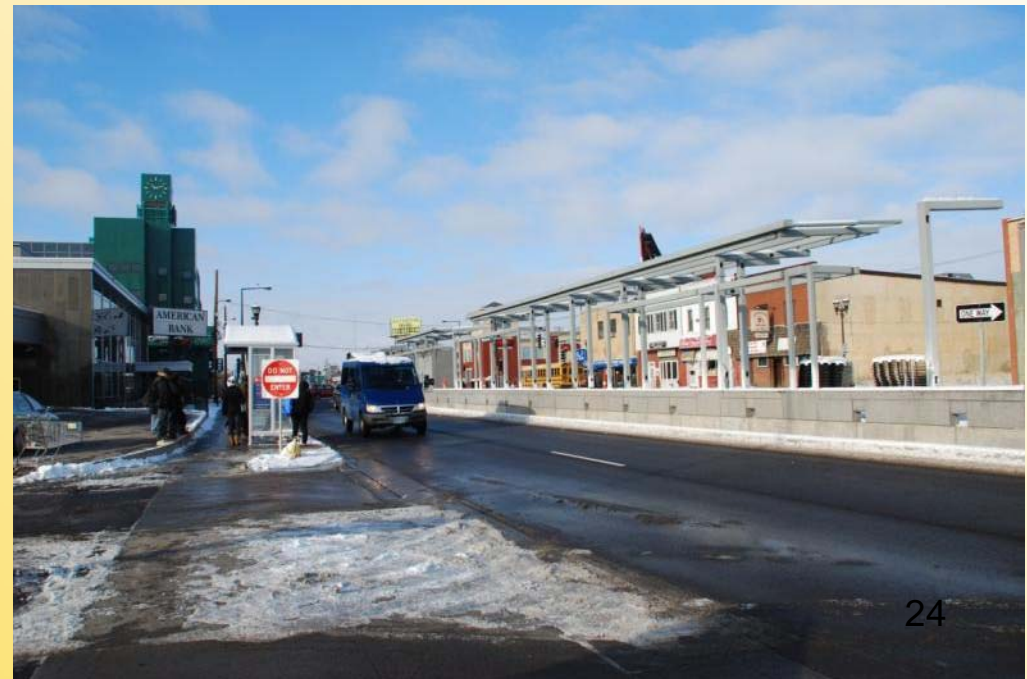
Civil East: New sidewalk Midway Shopping Center



Civil East: New Metro Transit Passenger Shelters



Civil East: Snelling Station



Civil East: Fairview Avenue Station



Civil East: Raymond Avenue Station



Civil East: Westgate Station



Civil West: University Ave. Track



Civil West: UofM Transitway Reopened 8/24/11



Civil West: Oak & Washington Opened All Lanes, All Directions



Civil West: Oak & Walnut Opened Nov 30



Civil West: Washington Ave. Opened East of Walnut Nov 30



Civil West: East Bank Station Foundation



Civil West: Washington Ave Retaining Walls



Civil West: Washington Ave. Bridge Traffic Switch



Civil West: Washington Avenue Bridge South Deck Opened Nov 18



Civil West: Work Started on North Deck



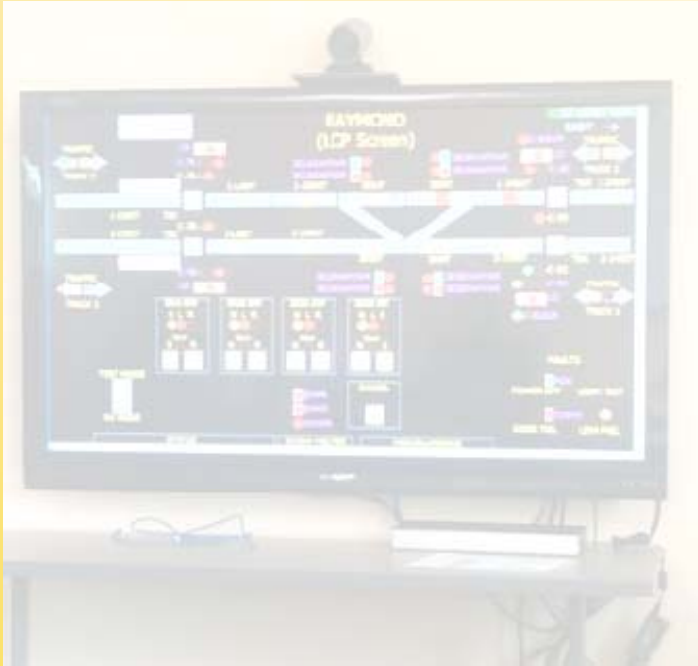
Civil West: West Bank Station



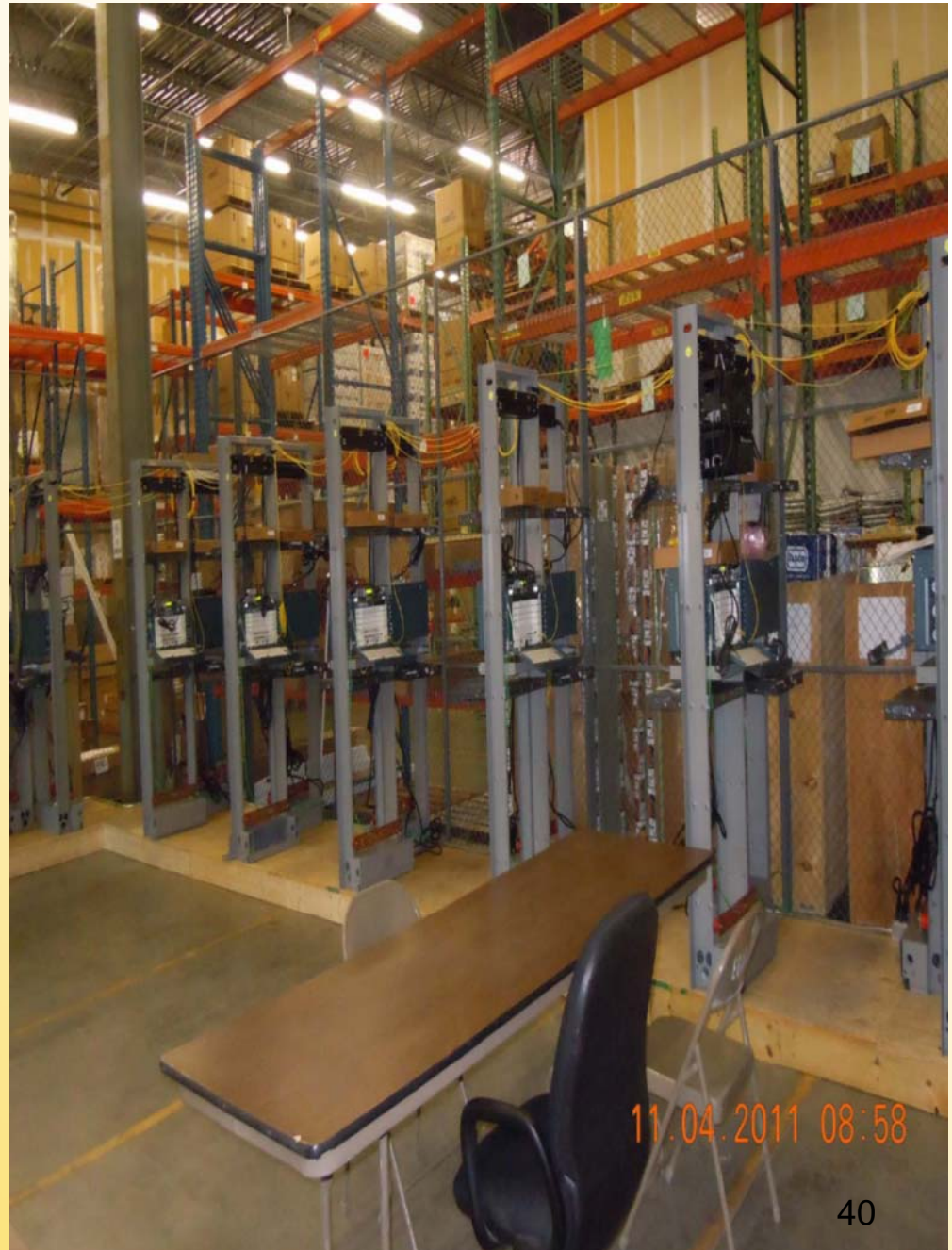
Civil West: I-35W LRT Flyover Bridge



Systems: Testing Site



RCC Monitor



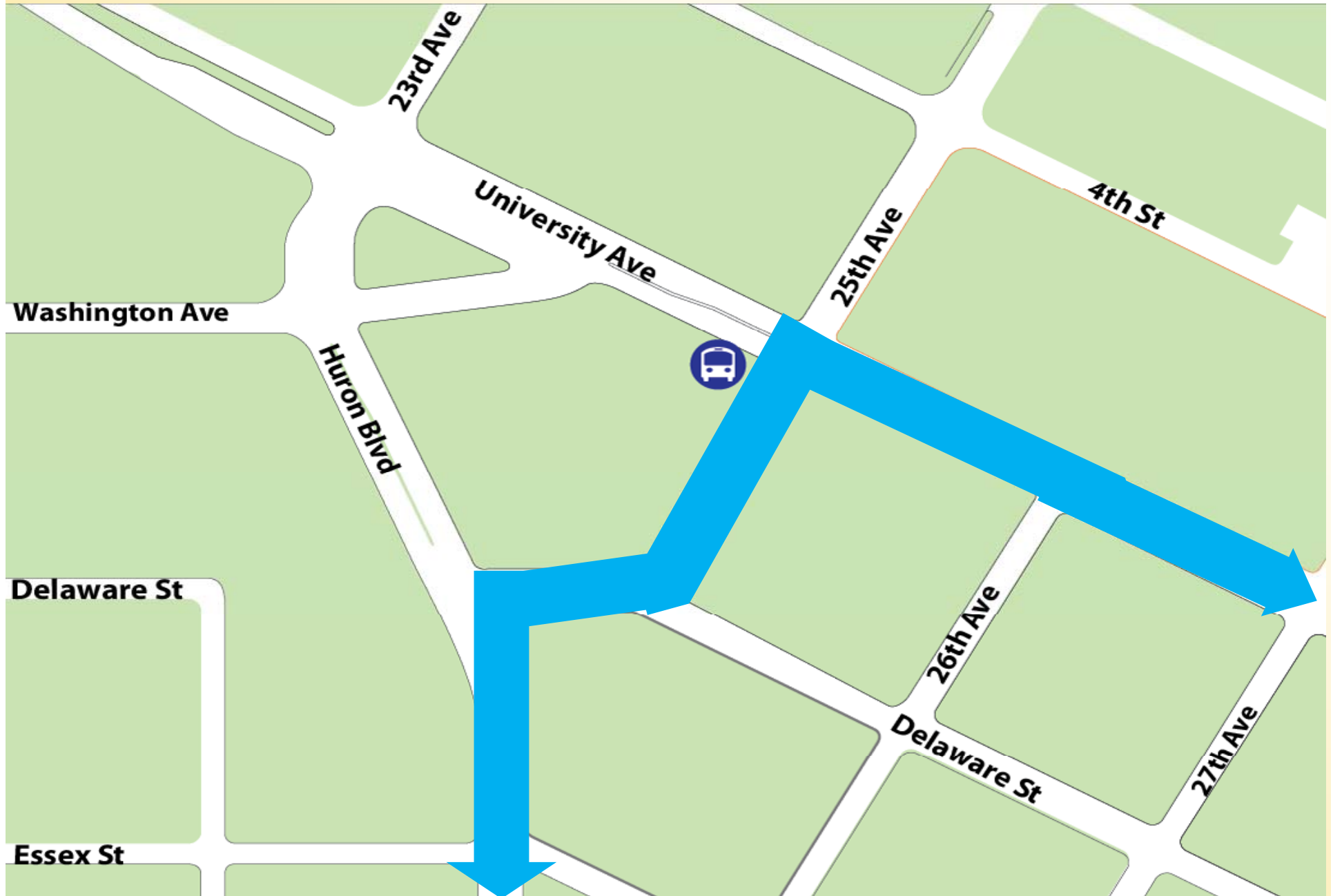
Central Corridor Light Rail Transit



Construction Update

Work Scheduled for 2012
Completed in 2011

Civil West: Huron Bypass Route



Civil West: Huron Bypass Completed



Systems: TPSS #3



Civil West: Washington Ave. East Bound Lanes Paved up to West Bank Station



Central Corridor Light Rail Transit



Construction Update

Work Scheduled for 2011 to be
Completed in 2012

Civil East: University Ave. Cleveland -Prior North Retaining Walls, Utilities, Road & Track



Central Corridor
Light Rail Transit

2,409 Construction Workers

(As of Dec. 31, 2011)

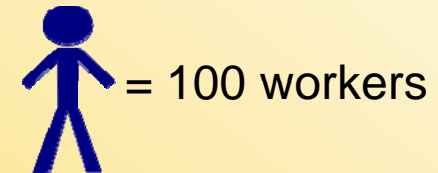
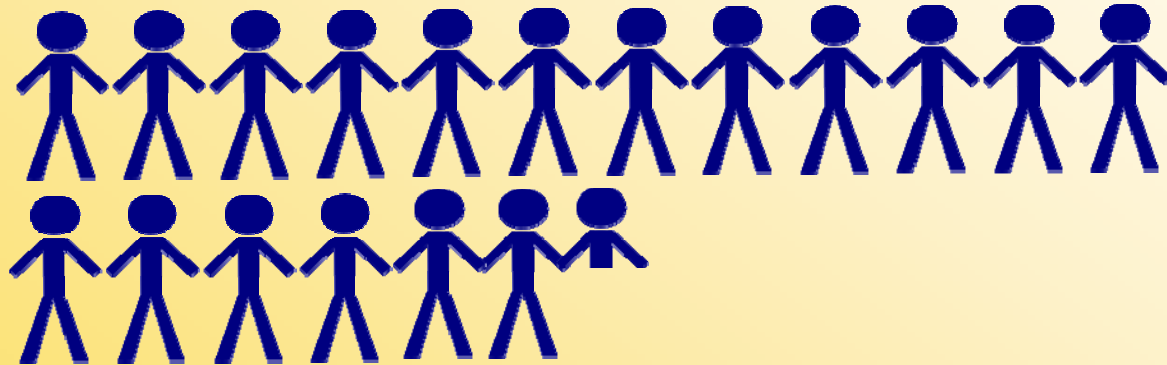
2010

(571 workers)



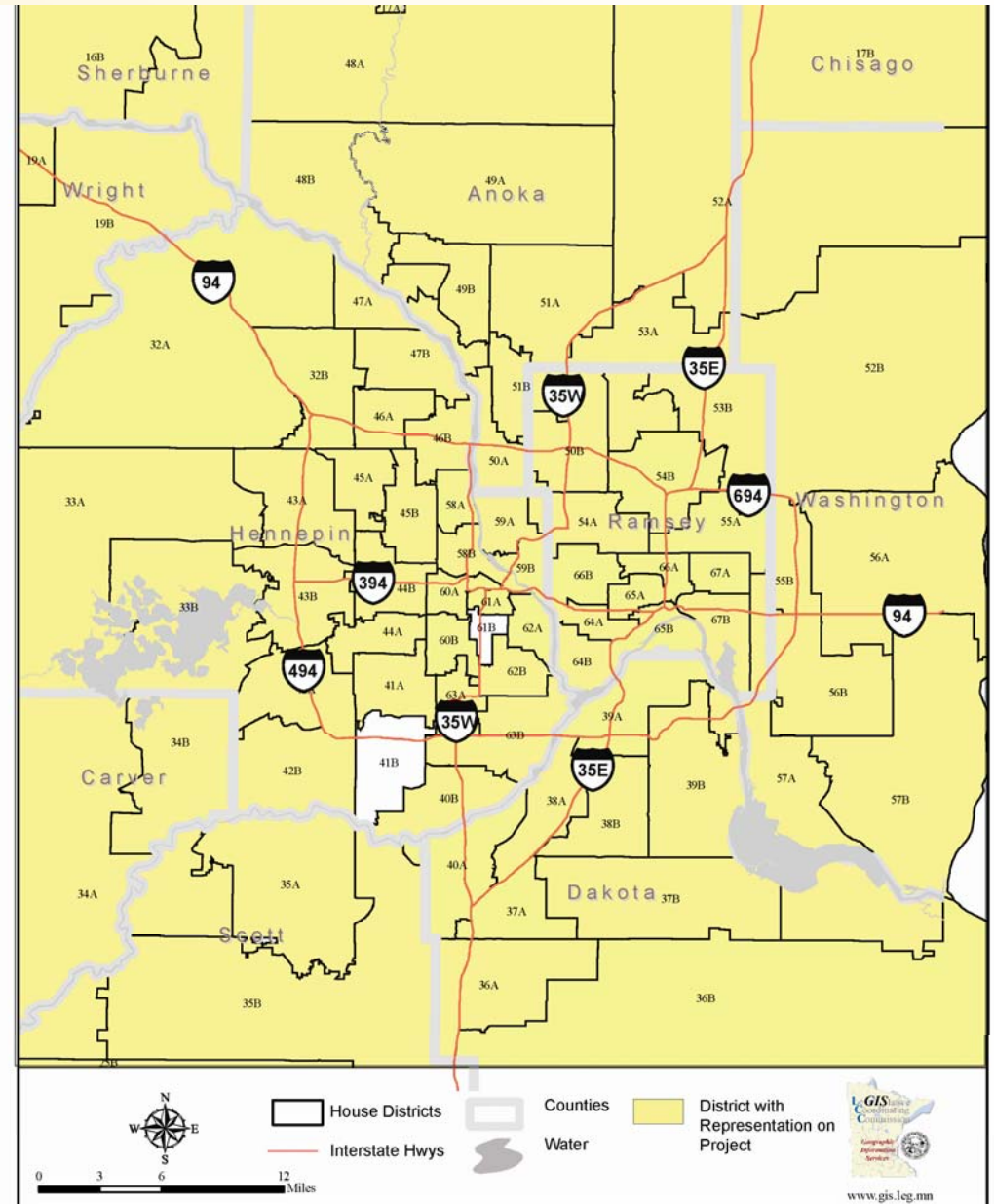
2011

(1,838 workers
through Nov)



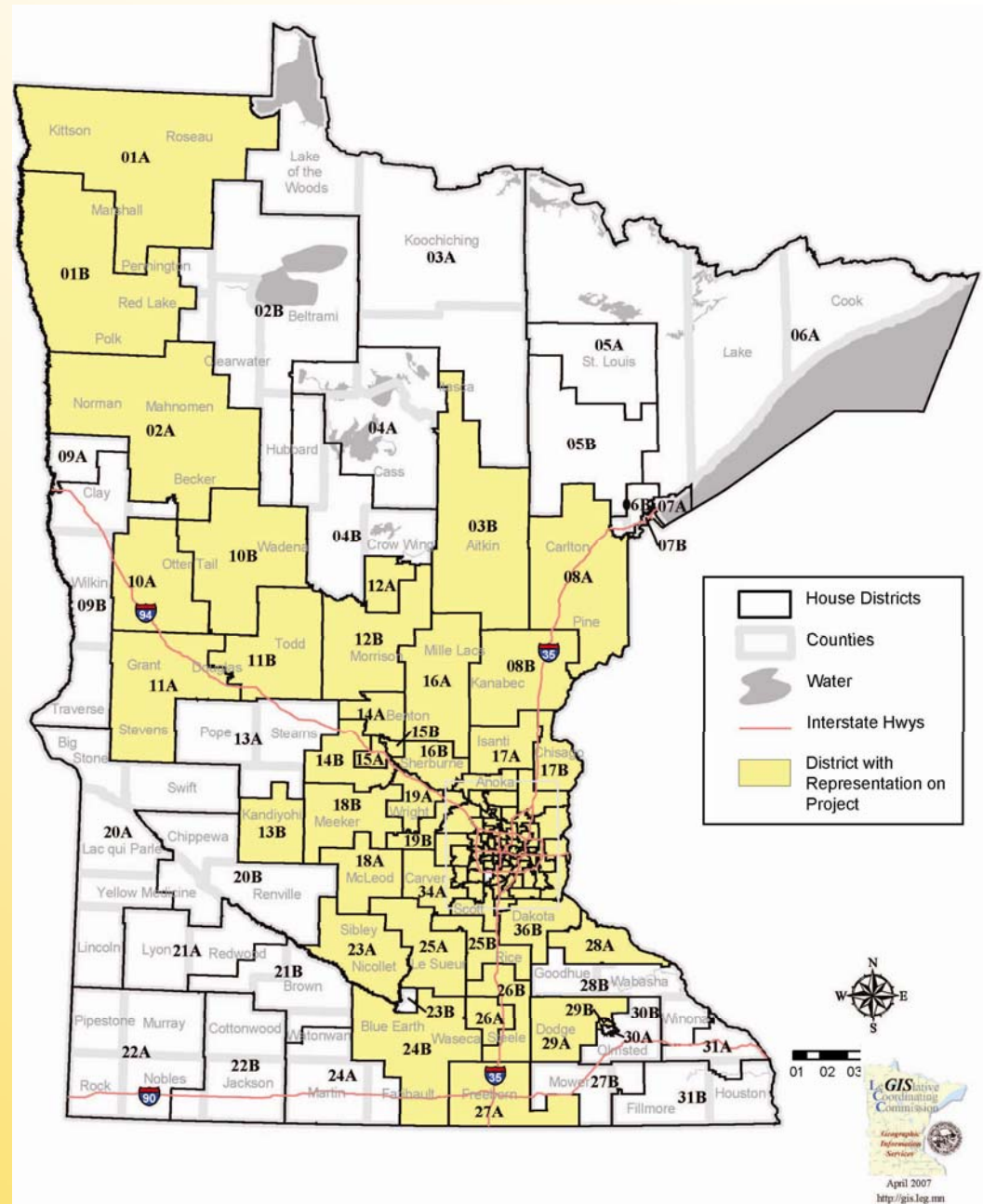
CCLRT Construction Workers Home

By MN House District
Metro Area



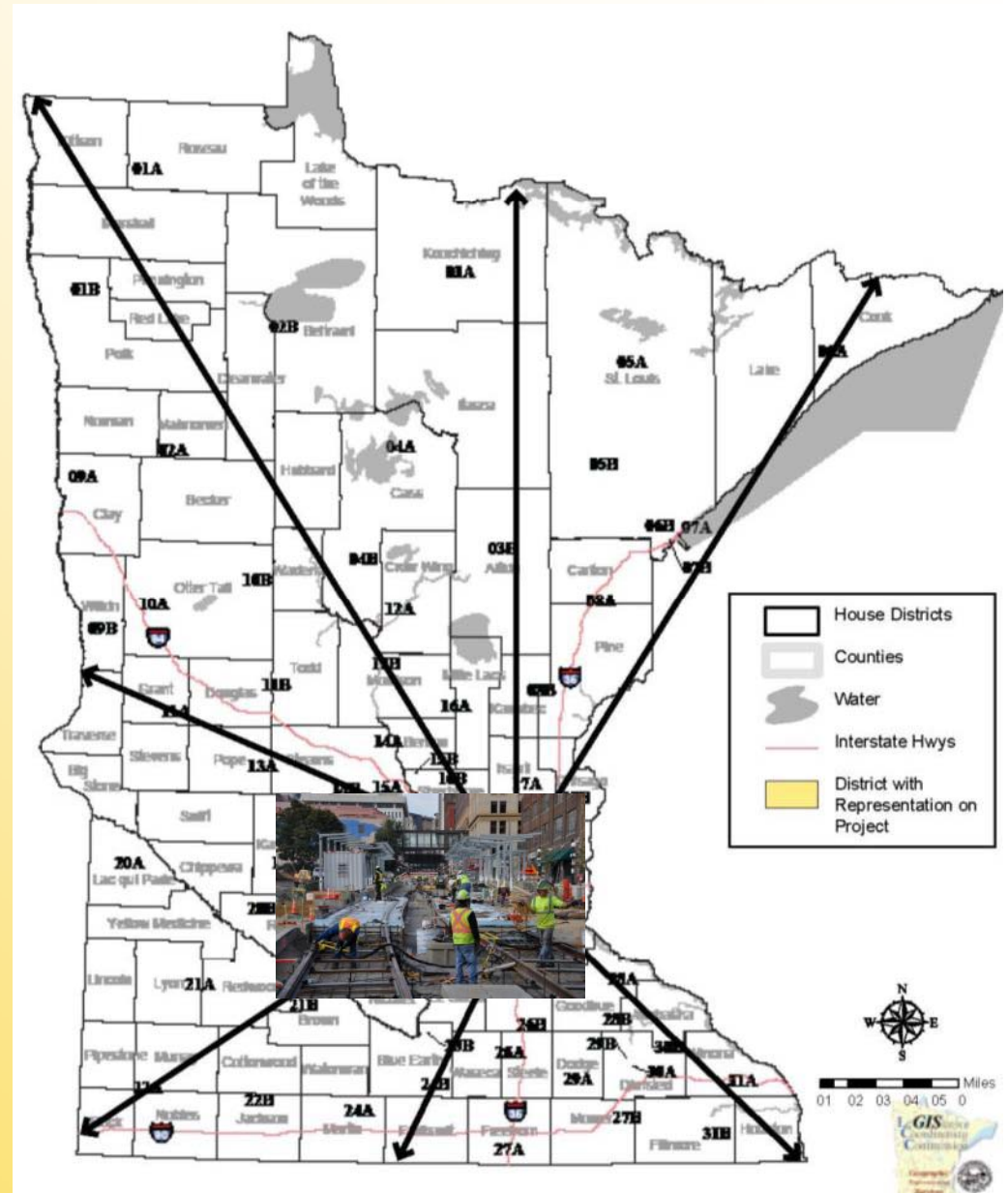
CCLRT Construction Workers Home

By MN House District
State



CCLRT Project Payroll

\$252 million CCLRT payroll will benefit communities statewide



Central Corridor Light Rail Transit



DBE and Workforce Report

DBE Achievement

Professional Services

Contractor	Contract Description	Amended Contract	\$ DBE Goal	Contract Payments to Date	\$ DBE to Date	% DBE of Contract Payments to Date	As of Date for each Contract
AECOM	PE, APE and FD (17% goal)	\$98,175,175	\$16,689,780	\$89,948,244	\$16,154,541	17.96%	11/25/11
MnDOT	Property Services (15% goal)	\$1,214,592	\$182,189	\$645,498	\$58,828	9.11%	8/31/11

DBE Achievement

Construction (15% goal)

Contractor	Bid Pack	Amended Contract	\$ DBE Goal	Contract Payments to Date	\$ DBE Payments to Date	% DBE of Contract Payments to Date	As of Date for each Contract
Ames/ McCrossan	Civil West	\$115,478,7338	\$17,321,810	\$47,673,679	\$7,536,852	15.81%	11/15/11
Walsh	Civil East	\$212,538,256	\$31,880,738	\$98,813,690	\$16,034,826	16.23%	11/25/11
Aldridge/ Collisys	Systems	\$88,023,836	\$13,203,575	\$11,451,725	\$55,896	0.49%	11/30/11
PCL	OMF	\$44,649,993	\$6,697,499	\$9,565,487	\$212,061	2.22%	10/25/11
Carl Bolander	AUR	\$13,768,232	\$2,065,235	\$13,768,202	\$1,631,238	11.85%	10/21/11
Graham	ATI	\$4,246,305	\$636,946	\$4,246,305	\$574,284	13.52%	11/3/11

Workforce Achievement

Total hours as of 11/30/11

Contractor	Total hours	Minority hours	Minority %	Women hours	Women %
Walsh	424,790	76,625	18.04 (+.17)	26,013	6.13 (-.10)
AMJV	154,608	26,000	16.81 (+.82)	11,692	7.56 (+.09)
PCL	29,558	5,208	17.62 (-.11)	1,813	6.13 (+.55)
ACJV	1,279	8	0.59 (+.59)	33	2.58 (+2.58)

Central Corridor Light Rail Transit

More Information



Check out our website:

- www.centralcorridor.org

Contact the Central Corridor Project Office:

- 540 Fairview Avenue North
St. Paul, MN 55104
- Construction Hotline: 651-602-1404
- Comment Line: 651-602-1645
- Email: centralcorridor@metc.state.mn.us