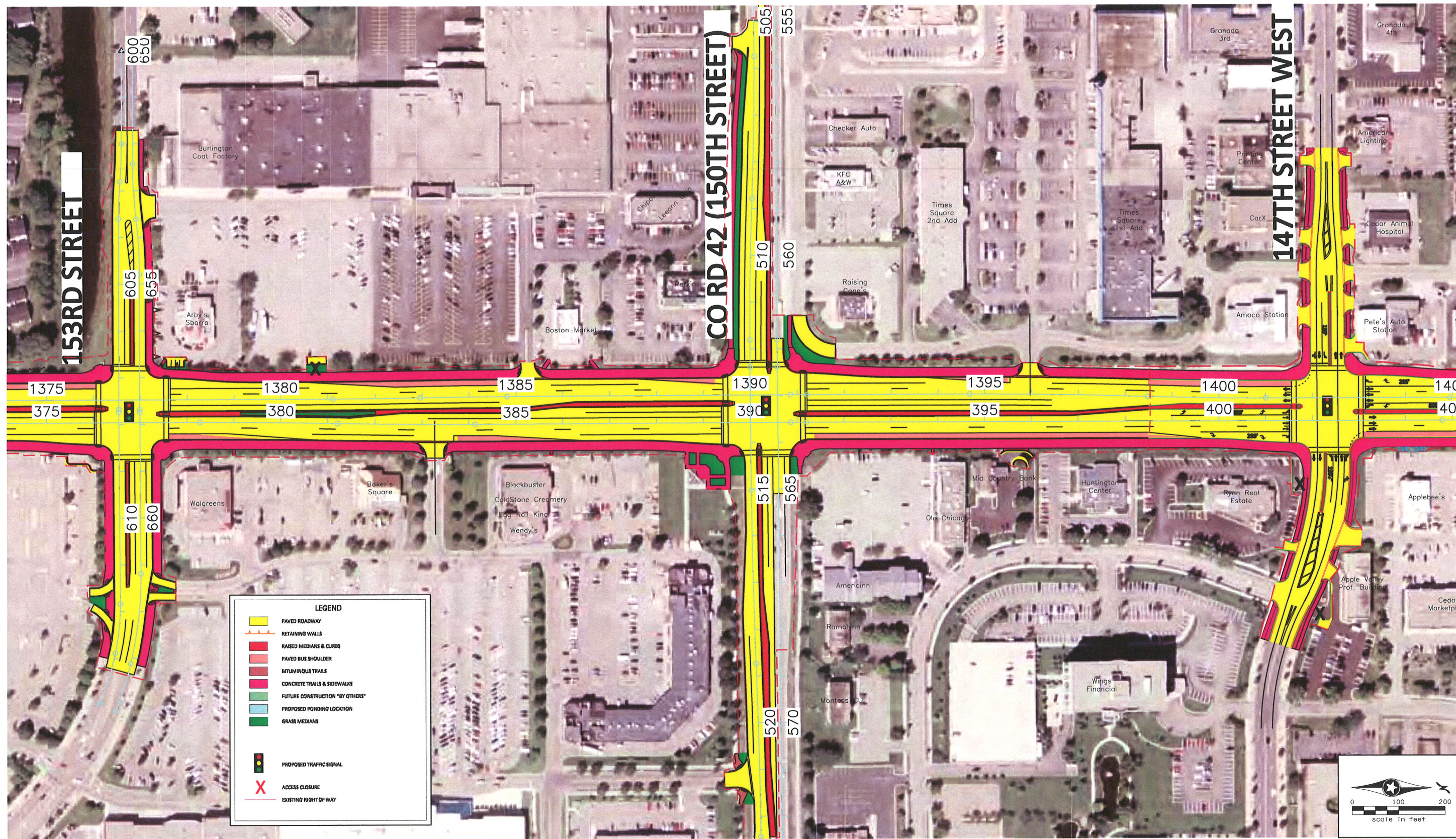


H:\Projects\6726\HI-MU\LAYOUT\Apple Valley_200 scale_DM.dwg

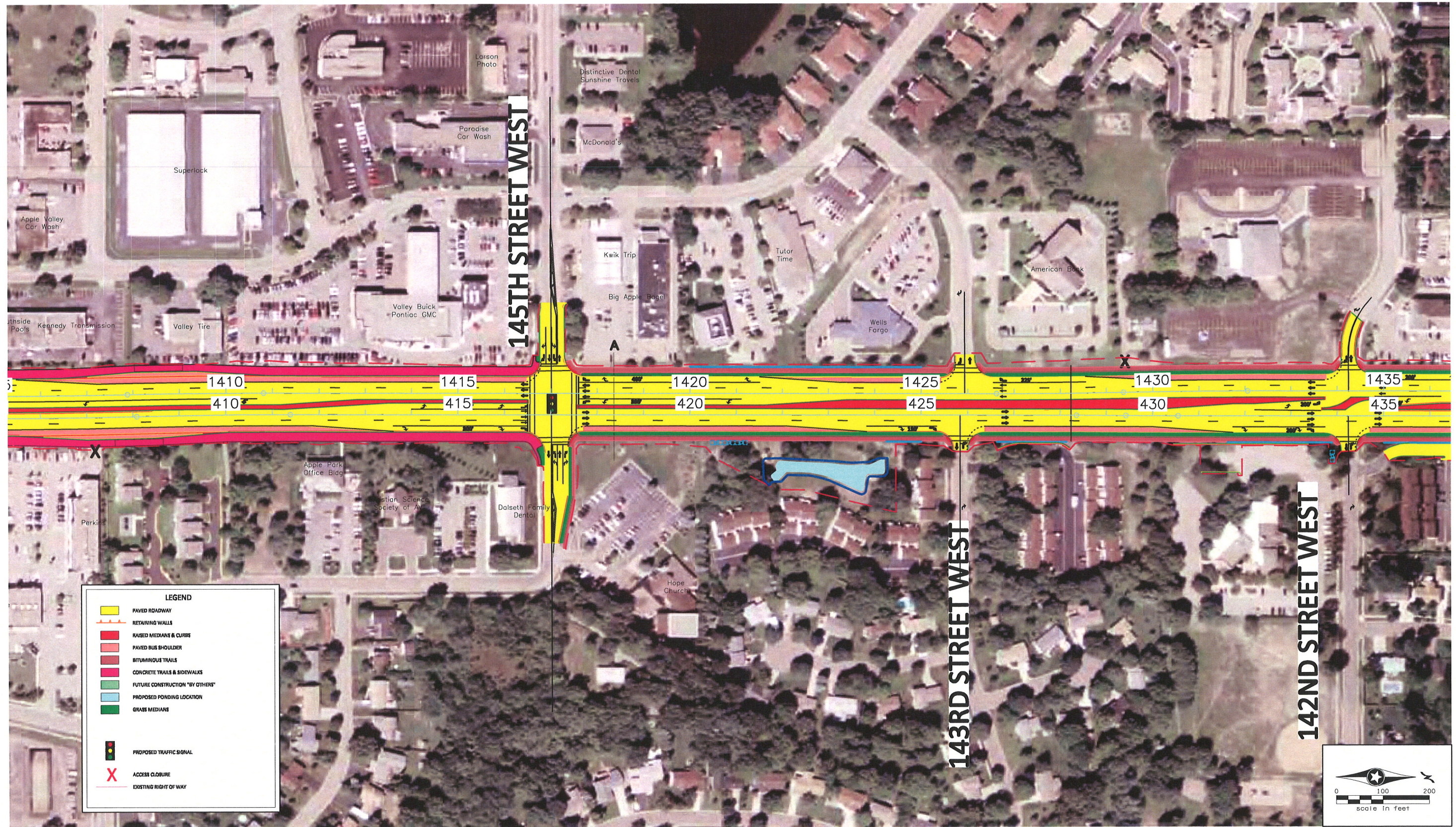


Geometric Layout ~ County State Aid Highway 23 (Cedar Avenue BRT) Roadway Reconstruction

S.P. 19-623-23, 19-623-24, 19-623-25
Dakota County
Job #6726
February 25, 2010

Figure 3-6

H:\Projects\6726\HI-MULAYOUT\Apple Valley 200 scale_DIM.dwg

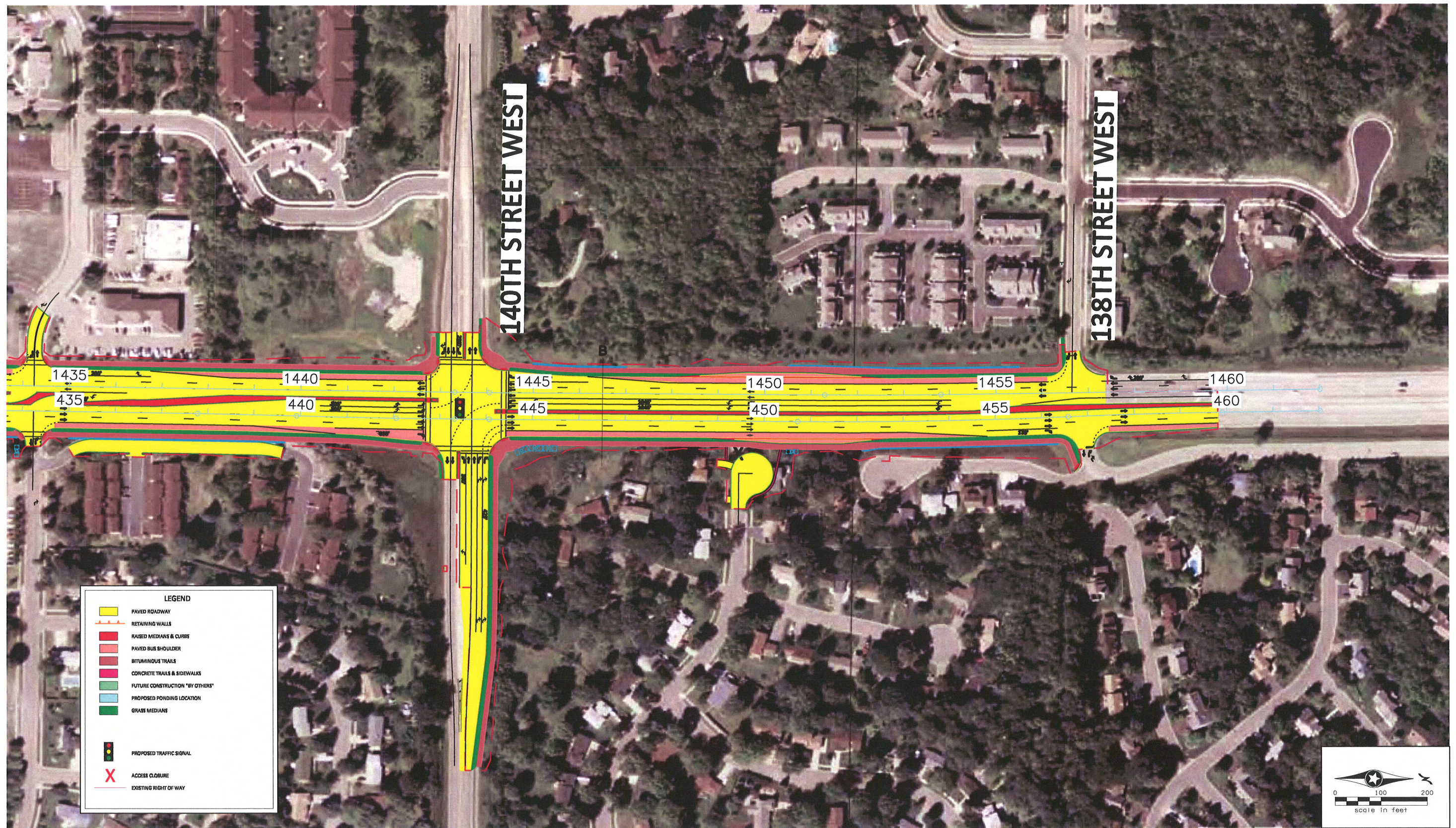


Geometric Layout ~ County State Aid Highway 23 (Cedar Avenue BRT) Roadway Reconstruction

S.P. 19-623-23, 19-623-24, 19-623-25
Dakota County
Job #8726
February 25, 2010

Figure 3-7

H:\Projects\16726\HI-MULAYOUT\Apple Valley 200 scale_DM.dwg



Geometric Layout ~ County State Aid Highway 23 (Cedar Avenue BRT) Roadway Reconstruction

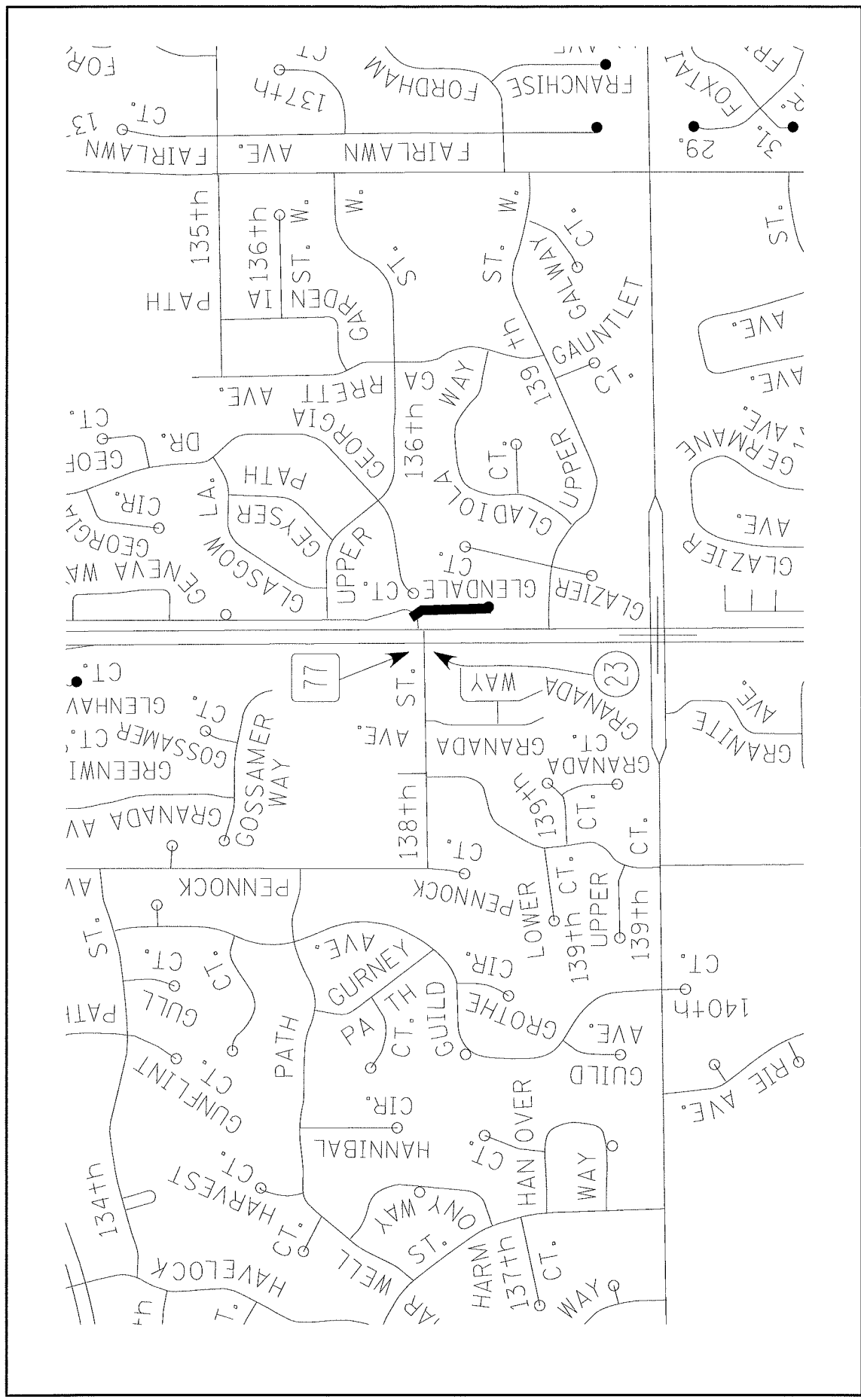
S.P. 19-623-23, 19-623-24, 19-623-25

Dakota County

Job #6726

February 25, 2010

Figure 3-8



PROJECT LOCATION - GLENDALE COURT UTILITY RELOCATIONS

COUNTY STATE AID HIGHWAY 23 (CEDAR AVENUE BRT) ROADWAY RECONSTRUCTION

S.P. 19-623-23, 19-623-24, 19-623-25

Dakota County

Figure 5

Figure 6
3-LV-610 Interceptor Rehabilitation - Trenchless

