



Committee of the Whole, August 15, 2012

Overview of Today's Presentation

- Foundations of *Thrive MSP 2040*
- Review of the *2030 Regional Development Framework* Goals and Policies
- Decision points for *Thrive MSP 2040*
- Policy tools for *Thrive MSP 2040*
- Challenges for *Thrive MSP 2040*
- Timeline for developing *Thrive MSP 2040*
- Discussion

WHAT ARE THE FOUNDATIONS OF *THRIVE MSP 2040*?

1967 Rationale for the Metropolitan Council

- Backyard septic systems were failing in many suburban communities, and inadequately treated wastewater was being discharged into many of the region's lakes, rivers and streams.
- The Twin Cities' privately owned bus company was rapidly disintegrating, a victim of rising fares, declining ridership and an aging bus fleet.



1967 Rationale for the Metropolitan Council

- Rapid growth was threatening vital natural areas better suited for preservation as parks and open space.
- Growing fiscal disparities were making it difficult for communities with inadequate tax capacity to fund essential services and were providing unhealthy development incentives.



What is *Thrive MSP 2040?*

“The Metropolitan Council shall prepare and adopt, after appropriate study and such public hearings as may be necessary, a **comprehensive development guide** for the metropolitan area...”

(M.S. 473.145)

What is *Thrive MSP 2040*?

- The long-range plan that creates a **vision for the seven-county region for the next 30 years**
- The update to the 2030 Regional Development Framework that provides the **policy direction for the next round of the Council's systems and policy plans**
- A plan to help our region **maximize opportunities for growth and prosperity for the coming decades.**

Looking back onto the Framework





2030 Framework: Four Goals



- Working collaboratively with regional partners to accommodate growth within the metropolitan area
- Maximizing the effectiveness of regional services, infrastructure investments and incentives
- Enhancing transportation choices and improving the ability of Minnesotans to travel safely and efficiently throughout the region
- Preserving vital natural areas and resource for future generations

2030 Framework: Four Policies



- **Policy 1:** Work with local communities to **accommodate growth** in a flexible, connected and efficient manner

2030 Framework: Four Policies



- **Policy 2:** Plan and invest in **multi-modal transportation choices**, based on the full range of costs and benefits, to slow the growth of congestion and serve the region's economic needs

2030 Framework: Four Policies



- **Policy 3:** Encourage expanded **choices in housing location and types**, and improved access to jobs and opportunities

2030 Framework: Four Policies











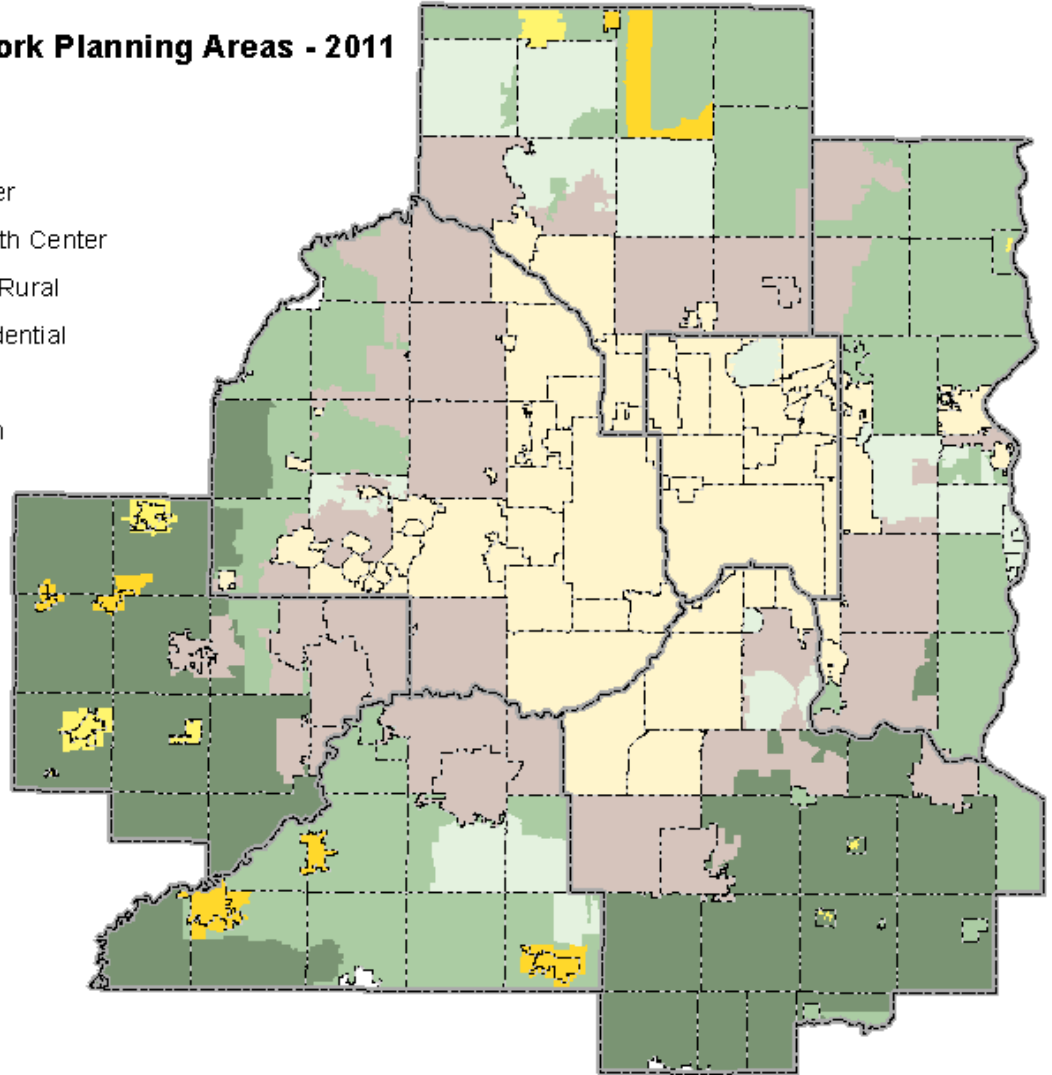
- **Policy 4:** Work with local and regional partners to reclaim, conserve, protect and enhance the region's **vital natural resources**

Framework Policies Vary by Planning Area



2030 Framework Planning Areas - 2011

-  Developed
-  Developing
-  Rural Center
-  Rural Growth Center
-  Diversified Rural
-  Rural Residential
-  Agricultural
-  Non Region



2030 Framework: Developing Communities

- **Policy 1:** Work with local communities to accommodate growth in a flexible, connected and efficient manner
- **Sample Council Roles:**
 - Provide regional system infrastructure to support staged development
 - Work with communities to identify and protect an adequate supply of land to accommodate post-2030 development



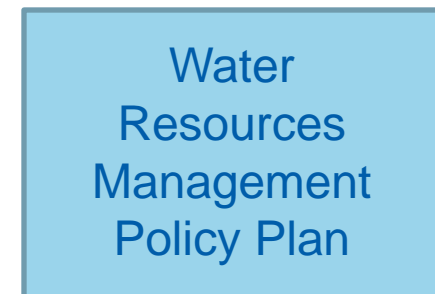
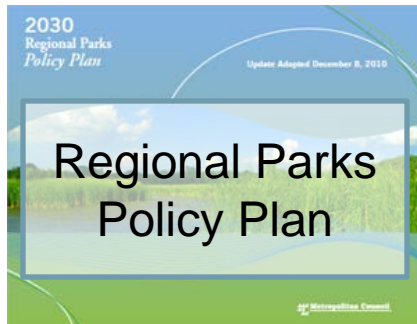
2030 Framework: Developing Communities

- **Policy 1:** Work with local communities to accommodate growth in a flexible, connected and efficient manner
- **Sample Community Roles:**
 - Plan and stage development to accommodate forecasted growth at appropriate densities (3-5+ units per acre and target higher density in locations with convenient access to transportation corridors and with adequate sewer capacity)
 - Plan land use patterns that will facilitate groundwater recharge





Systems Plans



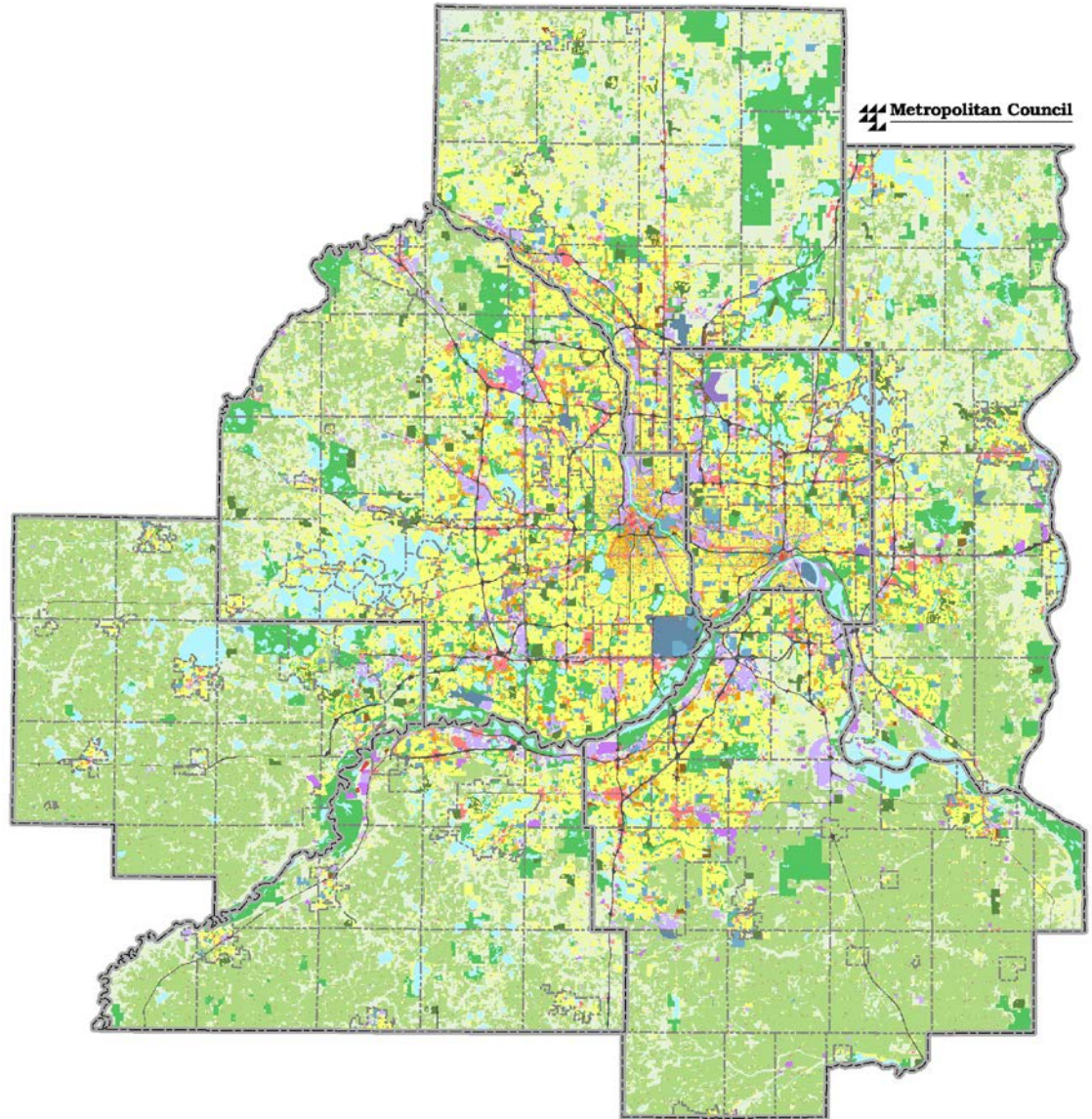
**LOOKING AHEAD:
DECISION POINTS FOR
*THRIVE MSP 2040***

or

**WHAT DOES OUR REGION NEED
TO CONTINUE TO THRIVE?**

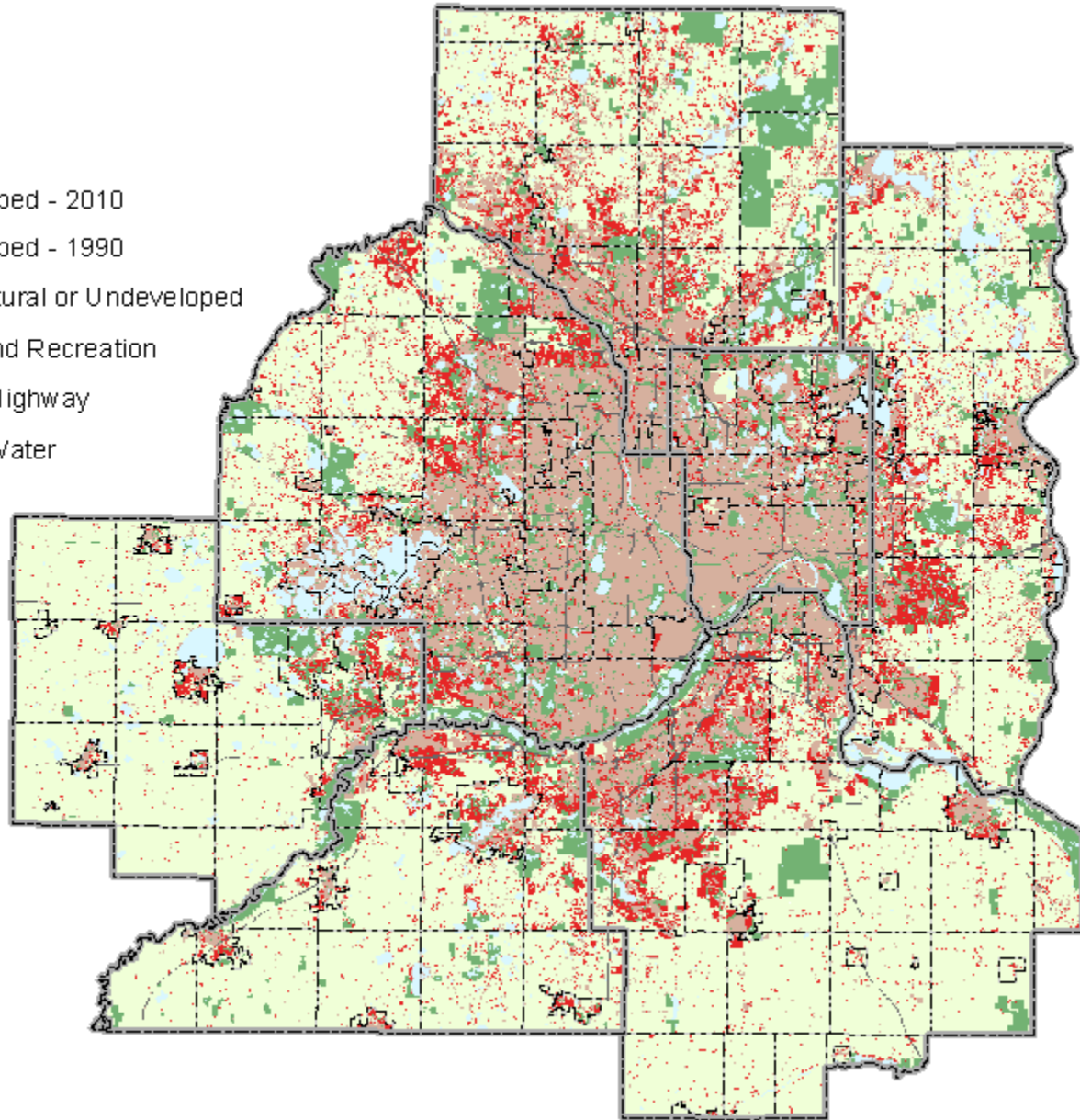
Decision Points:

- Where will the 458,000 additional households by 2040 be?
- Where will the 570,000 additional jobs by 2040 be?



Decision Points:

- Where will **development** occur by 2040?



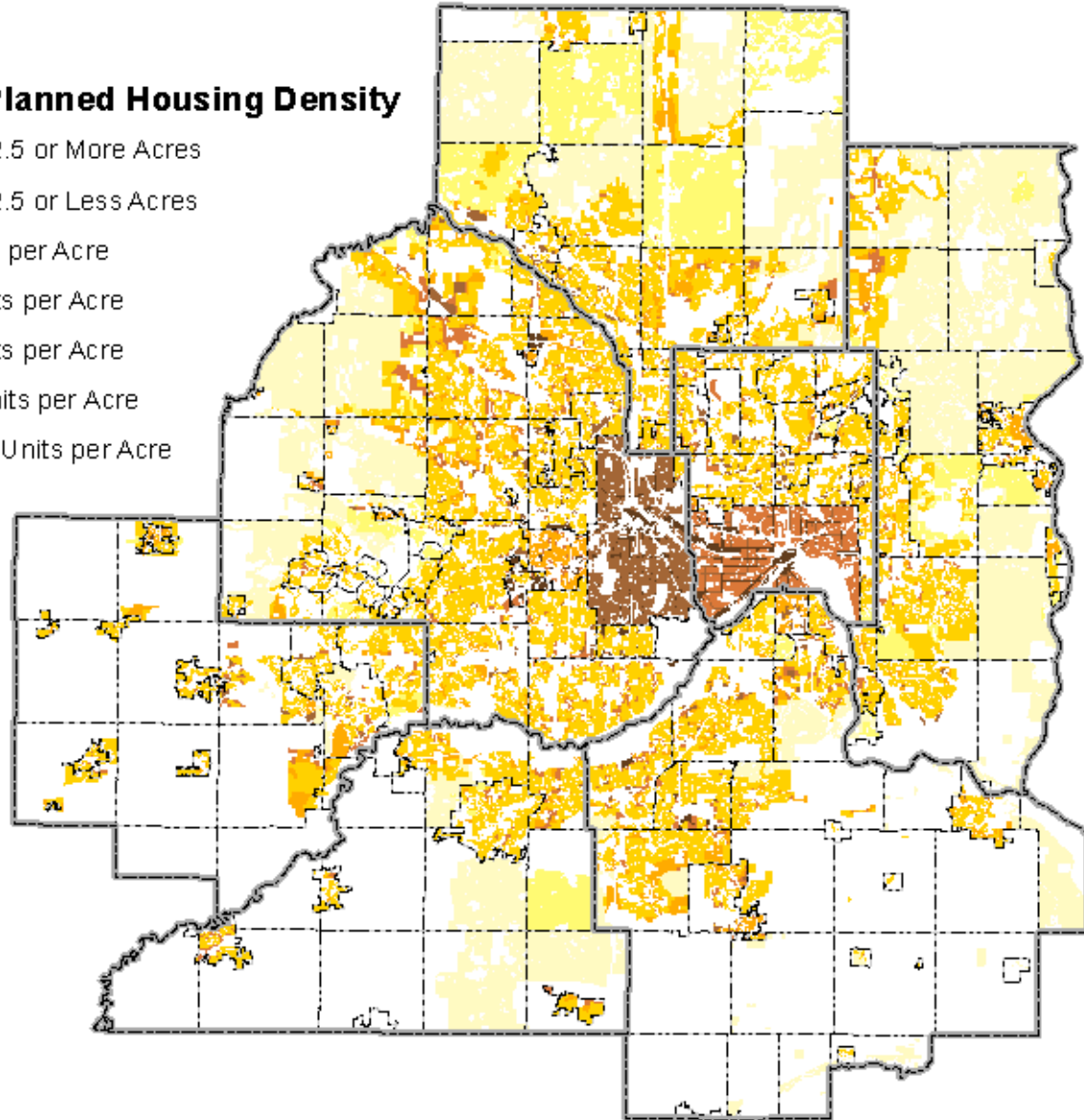
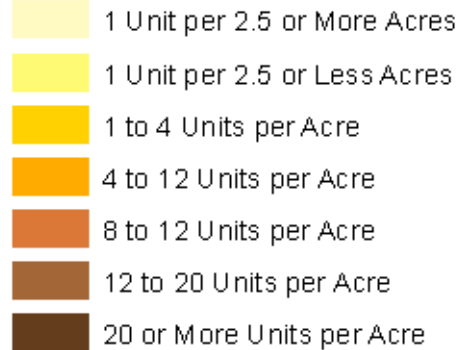
Decision Points: What density of development?

1990s	2000s	2010s	2020s
146,000 households added	96,000 households added		
68,000 residential acres added	42,000 residential acres added		???
2.16 households per residential acre	2.27 households per residential acre		???

Decision Points:

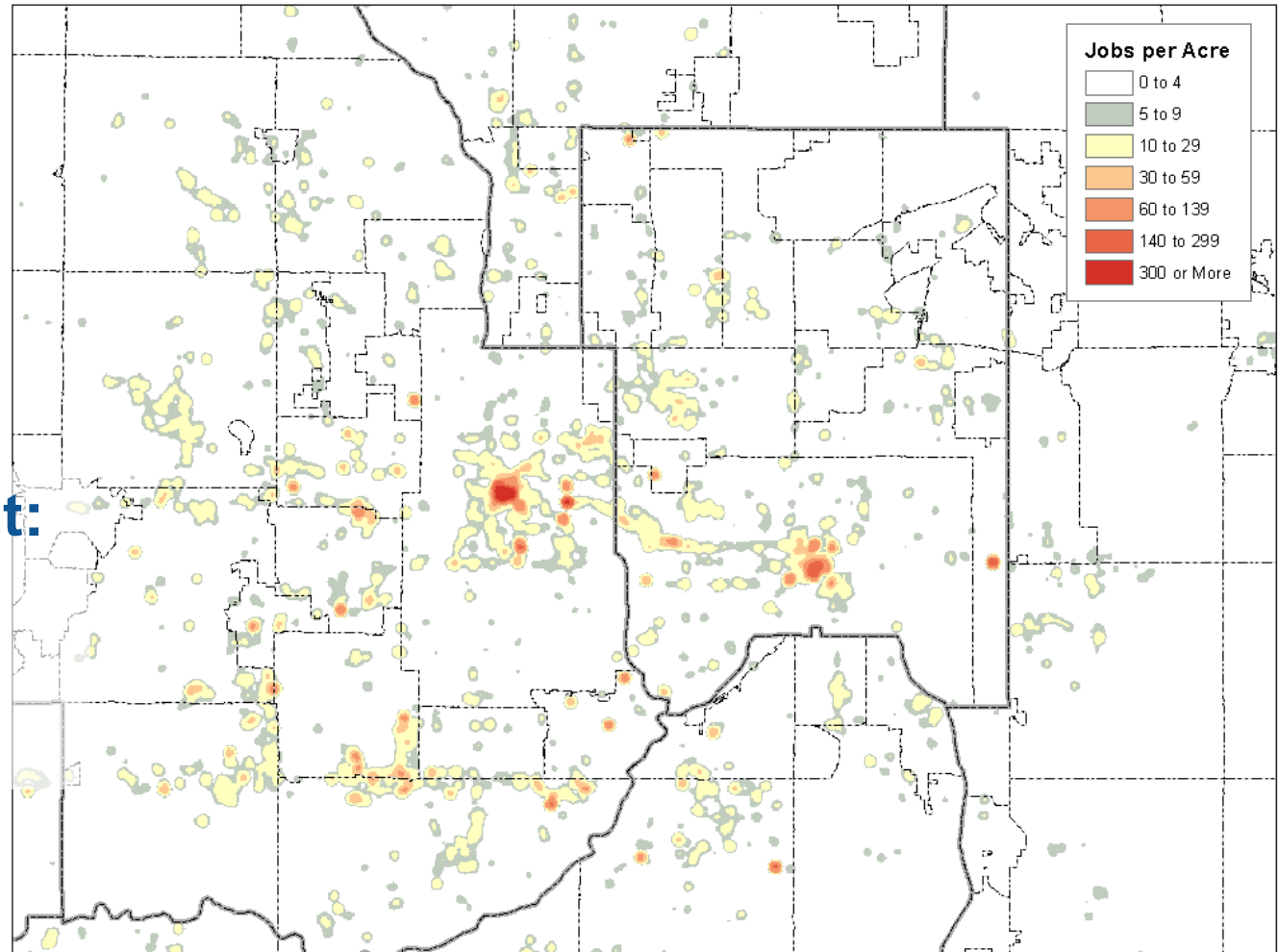
- Where will residential **density** be in 2040?

Generalized Planned Housing Density



Decision Points:

- **Employment:**
Where will future job density be?

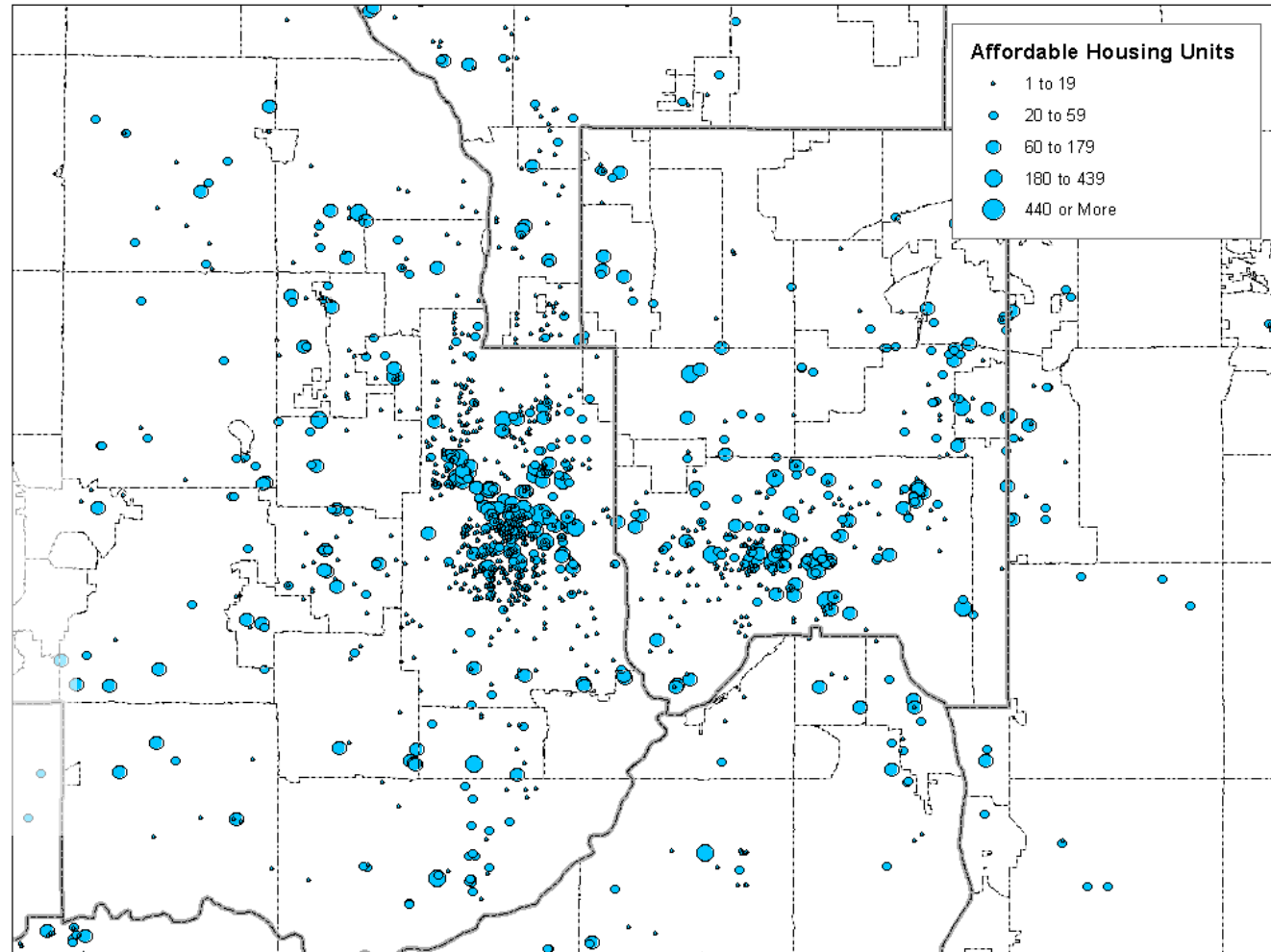


Decision Points:

- Where will **Metropolitan Urban Services** be available by 2040?
-

Decision Points:

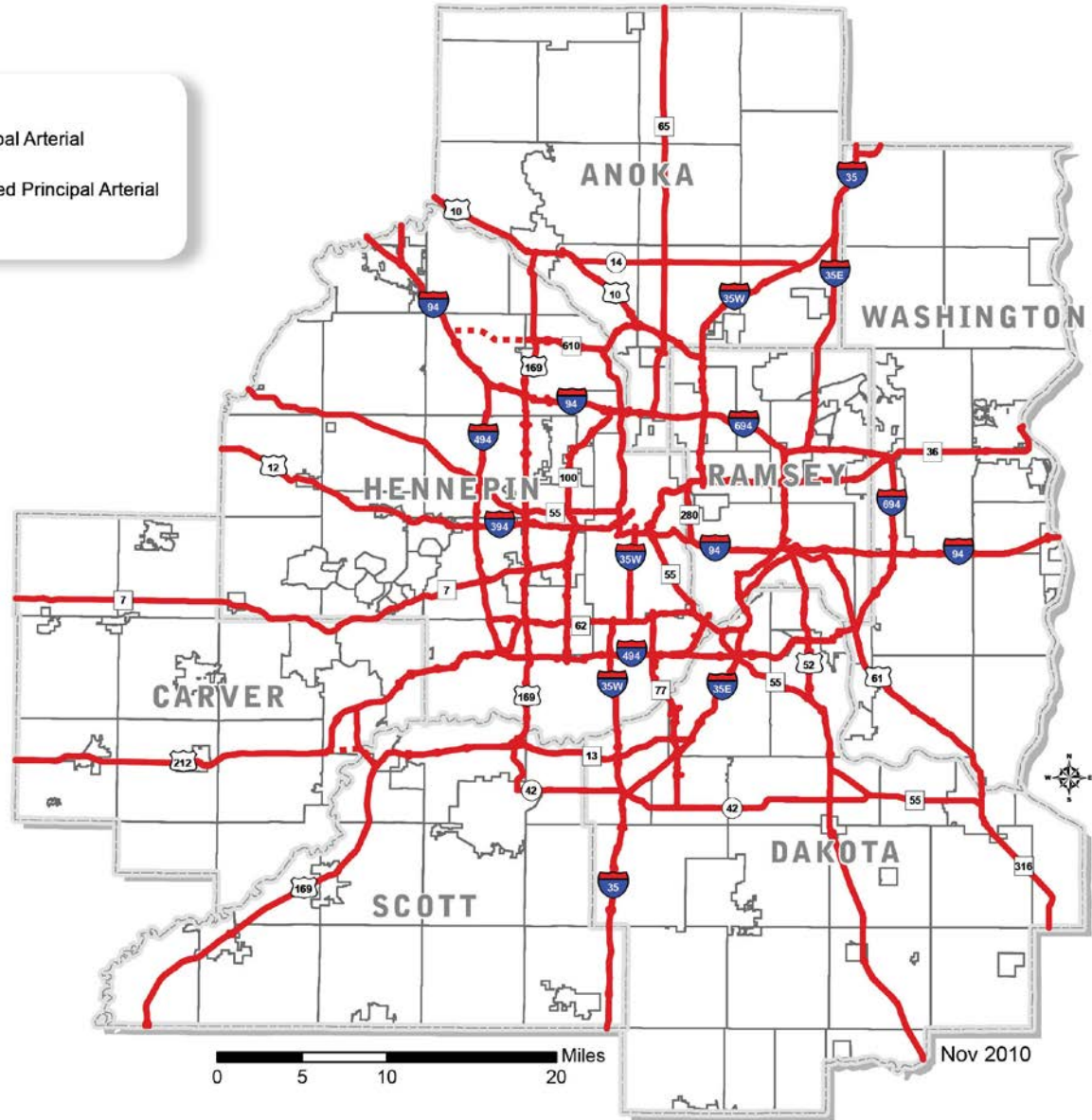
- Where will **affordable housing** be built?



— Principal Arterial
- - - Planned Principal Arterial

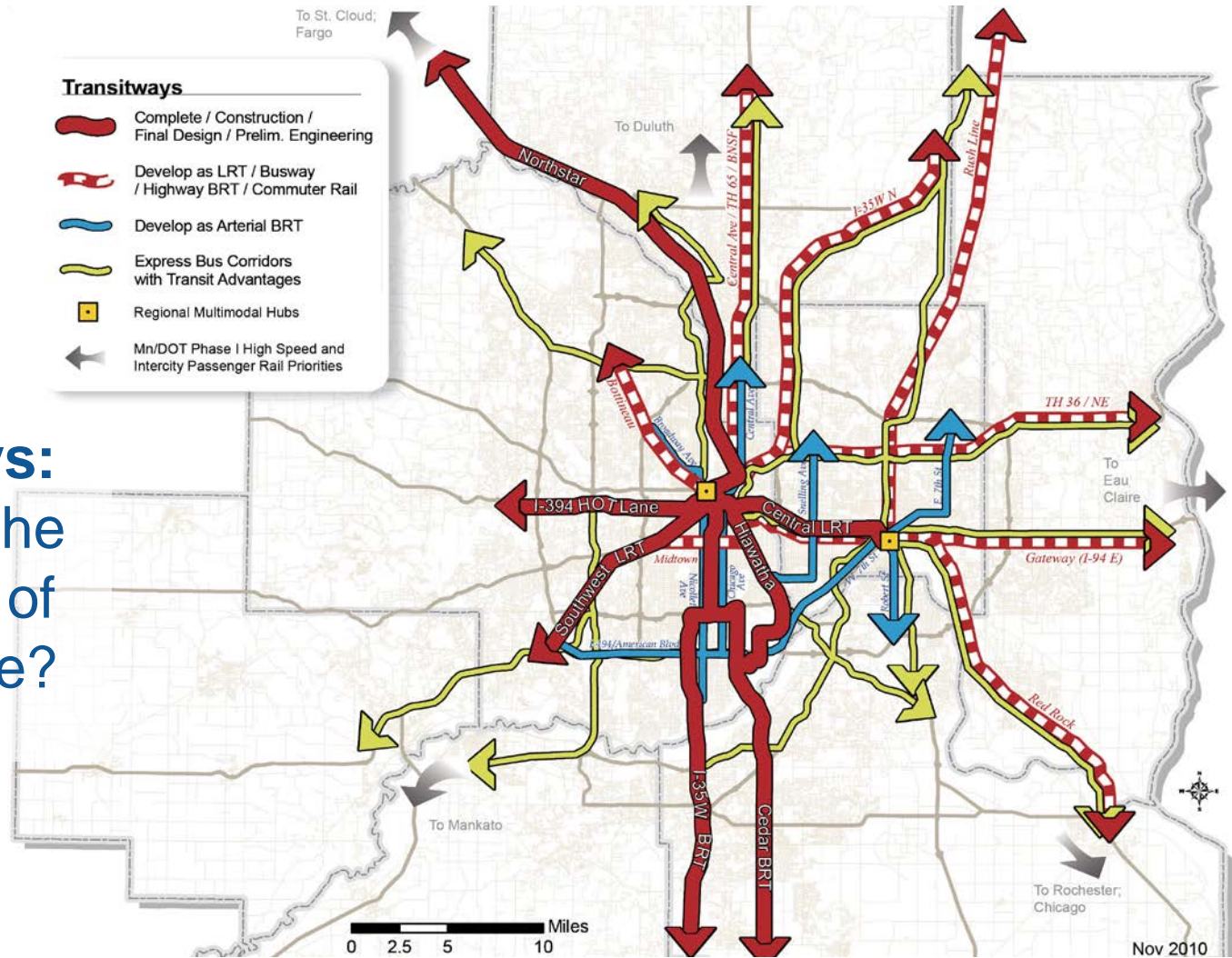
Decision Points:

- **Highways:**
Where will the highways of the future be?
What will their capacity be?



Decision Points:

- **Transitways:** Where will the transitways of the future be?



WHAT ARE THE POLICY TOOLS OF *THRIVE MSP 2040*?

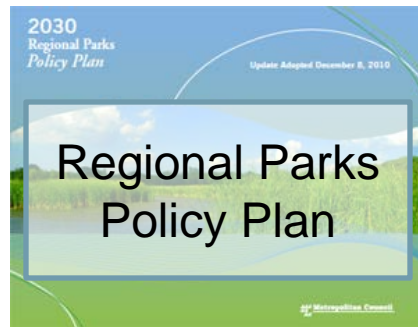


Water Supply
Master Plan

Housing
Policy Plan



Systems and Policy Plans





Transit Highways

Air Quality

Land Use

Bike and Pedestrian

Water Supply

Transitways

Aviation

Agricultural Land Preservation

Groundwater Recharge



Natural Resource Conservation

Rural Policy

Housing Preservation

Residential Density

Distribution of Affordable Housing

Lifecycle Housing

Wastewater Service and System Plan

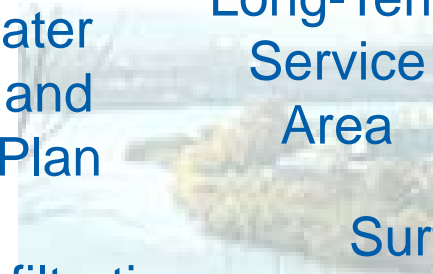
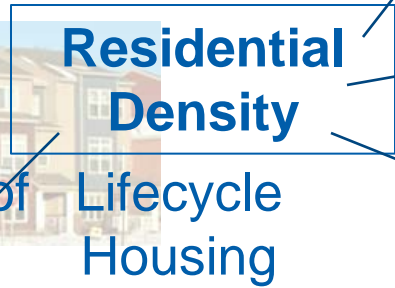
Long-Term Service Area

Priorities for Regional Park Acquisition

Regional Park Financing

Infiltration and Inflow

Surface Water Management



Housing Preservation
Distribution of Affordable Housing

Residential Density
Lifecycle Housing

Regional Park Financing

Priorities for Regional Park Acquisition

Transit Highways
Air Quality
Transitways
Land Use
Bike and Pedestrian

Aviation

Agricultural Land Preservation

Natural Resource Conservation
Rural Policy

Wastewater Service and System Plan

Infiltration and Inflow

Long-Term Service Area

Surface Water Management



We're hearing potential interest in addressing:

- Climate change / Greenhouse gas reduction
- Disaster planning
- Economic development
- Energy
- Fair housing
- Local food
- Public health associated with the built environment



Housing
Affordability /
Preservation

Funding for
Infrastructure
Maintenance

Scarce Public
Resources

Water Quality

Sluggish
Job Growth

WHAT ARE THE KEY CHALLENGES OF THE NEXT 30 YEARS?

Aging
Population

Transit
Funding

Highway
Congestion

Air Quality
Non-Attainment

Place- and Race-
based Disparities in
Access to Opportunity

Land Preservation

HOW DOES THIS COUNCIL WANT TO ADDRESS THESE ISSUES?



TIMELINE

High-level Timeline

Fall 2012

Outreach and Engagement

- Listen and Learn (through October)

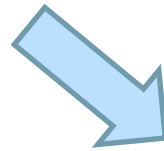
Policy Development

- Analysis of Regional Development Framework
- Analysis of current conditions and baseline policy scenario (through October)
- Principles and Goals (November)
- Alternative policy scenarios (December)
- Planning Area Forecasts (January)

High-level Timeline Spring 2013

Outreach and Engagement

- Reactions to:
 - Principles and Goals
 - Alternative Policy Scenarios
 - Planning Area Forecasts(through February 2013)



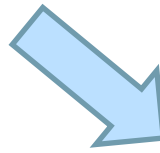
Policy Development

- Revise Principles and Goals
 - Develop Preferred Policy Scenario
- (through May 2013)

High-level Timeline Summer 2013

Outreach and Engagement

- Reactions to:
 - Preferred Policy Scenario
 - Local Area Forecasts (through August 2013)



Policy Development

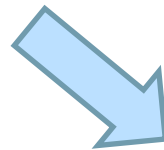
- Final Draft of Thrive MSP 2040 (September 2013)

High-level Timeline

Fall 2013

Outreach and Engagement

- Public Meetings
(October 2013)
- Public Hearing
(November 2013)



Policy Development

- Finalize Thrive MSP 2040
(December 2013)

Upcoming Committee of the Whole agendas

- **September 5:** Fair Housing and Equity Assessment
- **September 19:** Analysis of 2030 Regional Development Framework
- **October 3:** Summary of Phase I Outreach and Engagement
- **October 17:** Analysis of current conditions and baseline policy scenario



Upcoming Committee of the Whole agendas

- **November 7:** Discuss Principles and Goals
- **November 21 (9:00 a.m.):** Endorse Principles and Goals
- **December 5:** Discuss Alternative Policy Scenarios
- **December 19:** Endorse Alternative Policy Scenarios

Key Decisions: Committee of the Whole

- Principles and Goals (November)
- Alternative Policy Scenarios (December)
- Preferred Policy Scenario (May 2013)
- Final Draft (September 2013)

Summary of Today's Presentation

- Foundations of *Thrive MSP 2040*
- Review of the *2030 Regional Development Framework* Goals and Policies
- Decision points for *Thrive MSP 2040*
- Policy tools for *Thrive MSP 2040*
- Challenges for *Thrive MSP 2040*
- Timeline for developing *Thrive MSP 2040*
- Discussion