



School and Housing Demographics In the Twin Cities

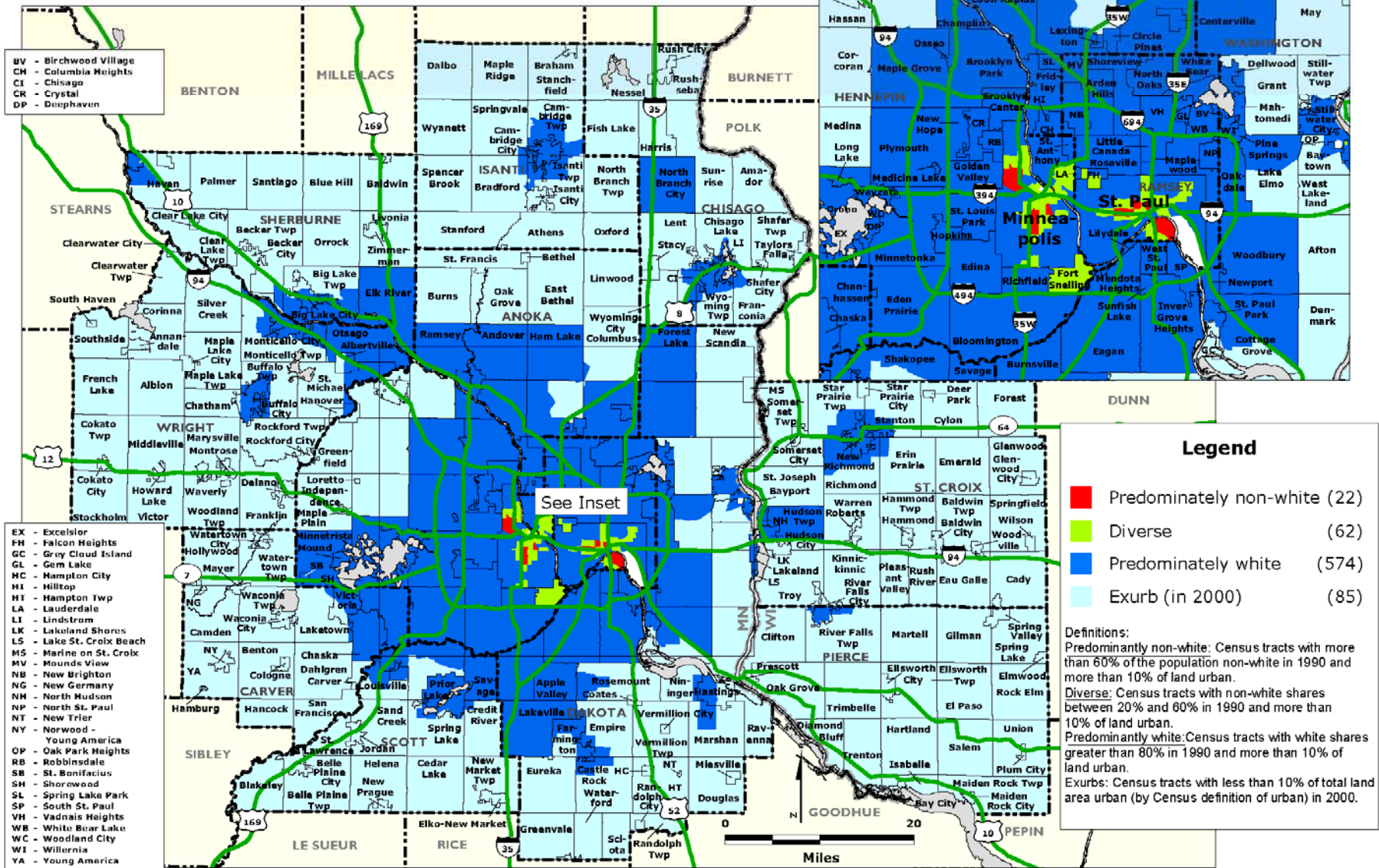
Department of Housing and Urban Development
March 22, 2012



institute on race & poverty

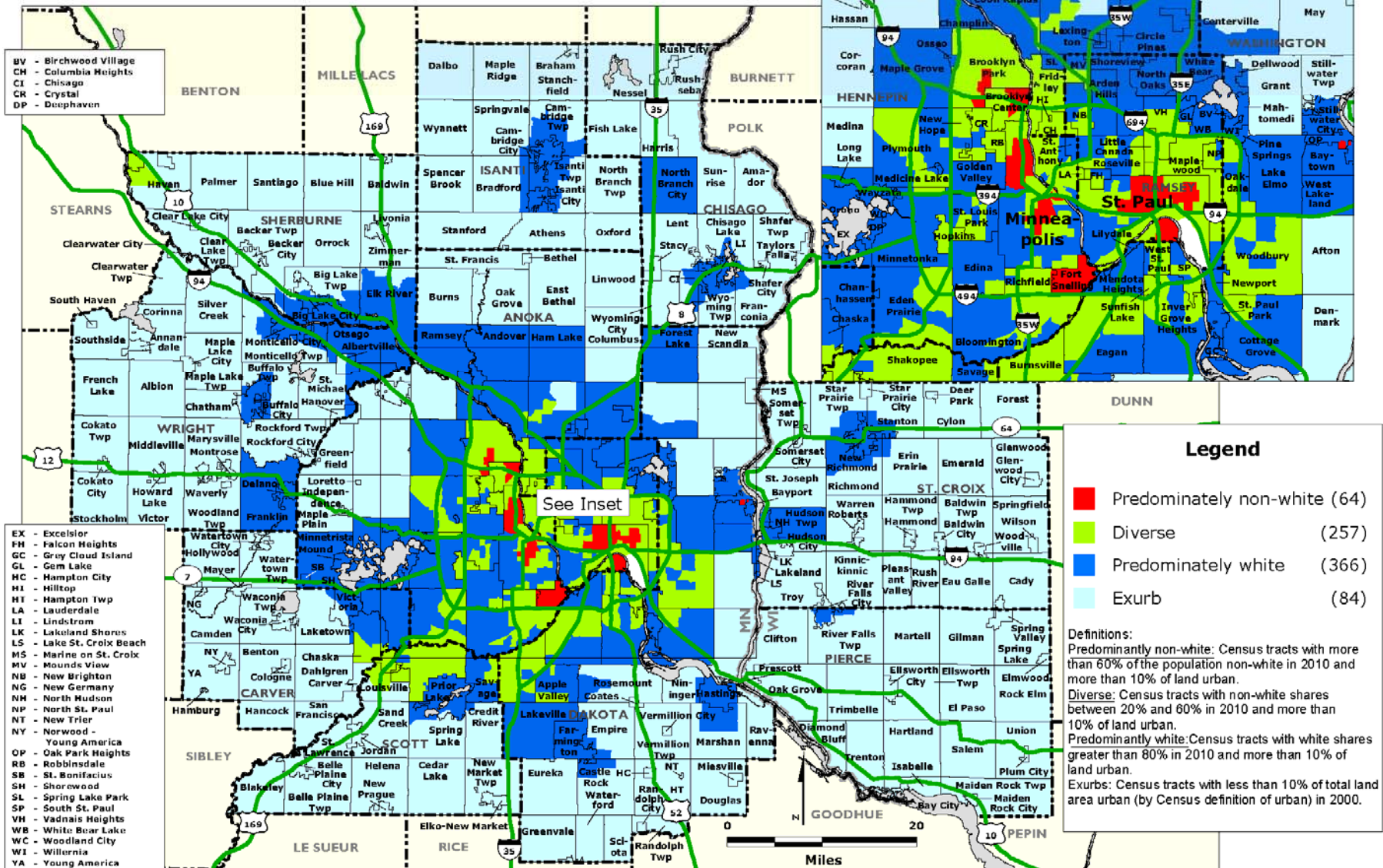
Research, Education and Advocacy

MINNEAPOLIS-SAINT PAUL REGION: Neighborhood Type by Census Tract, 1990



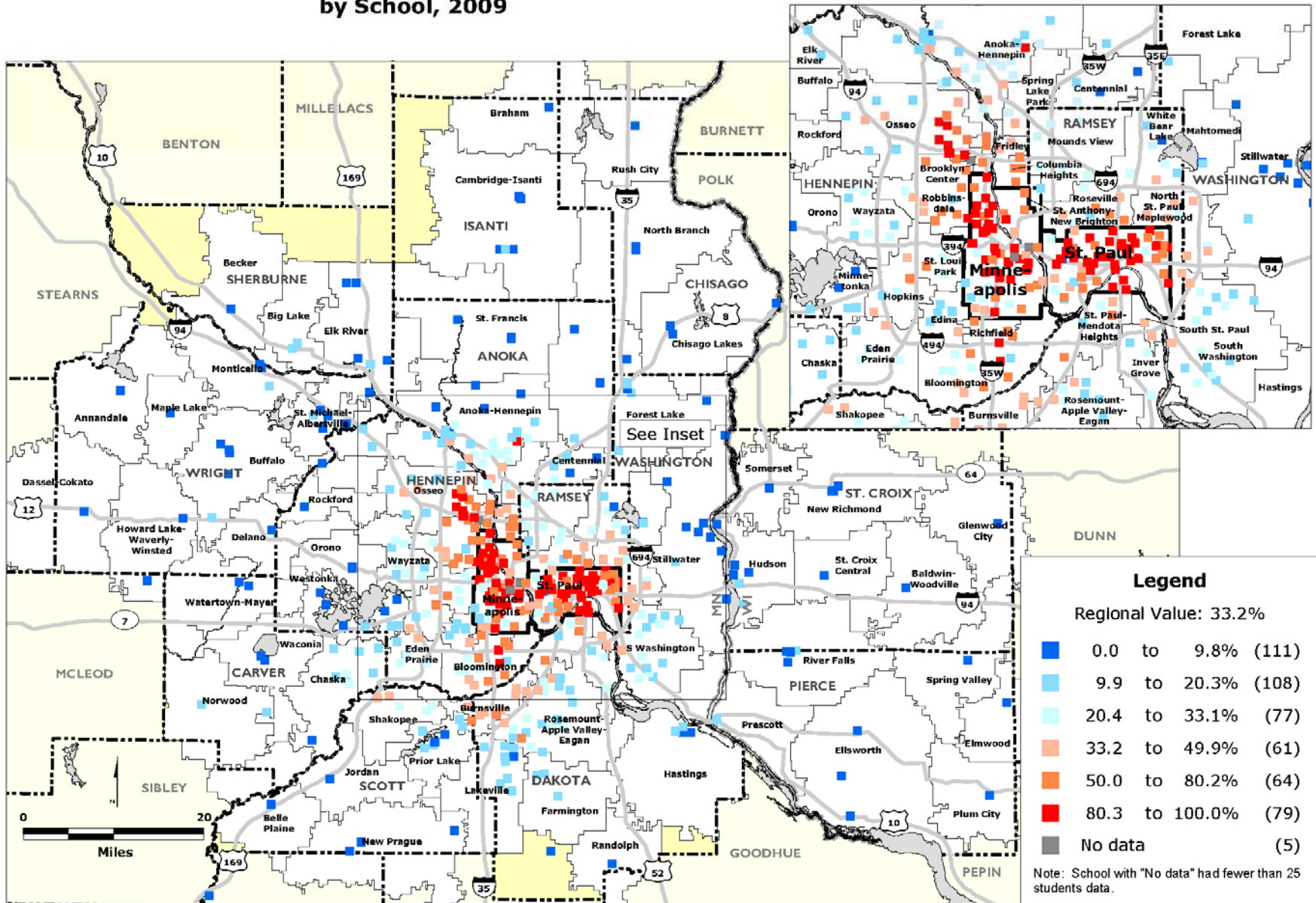
Data Source: U.S. Census Bureau

MINNEAPOLIS-SAINT PAUL REGION: Neighborhood Type by Census Tract, 2010

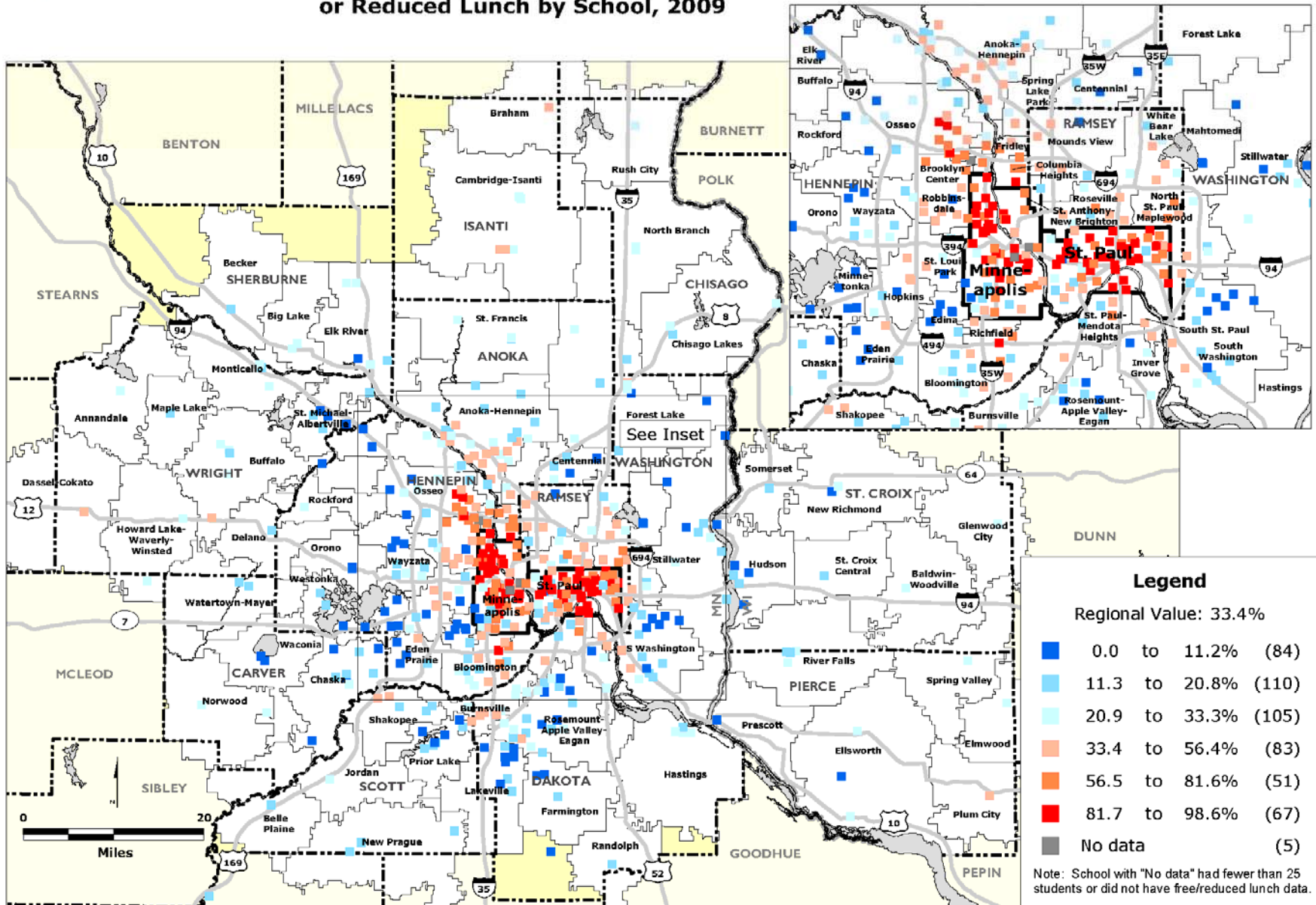


Data Source: U.S. Census Bureau

MINNEAPOLIS-SAINT PAUL REGION: Percentage Minority Elementary Students by School, 2009

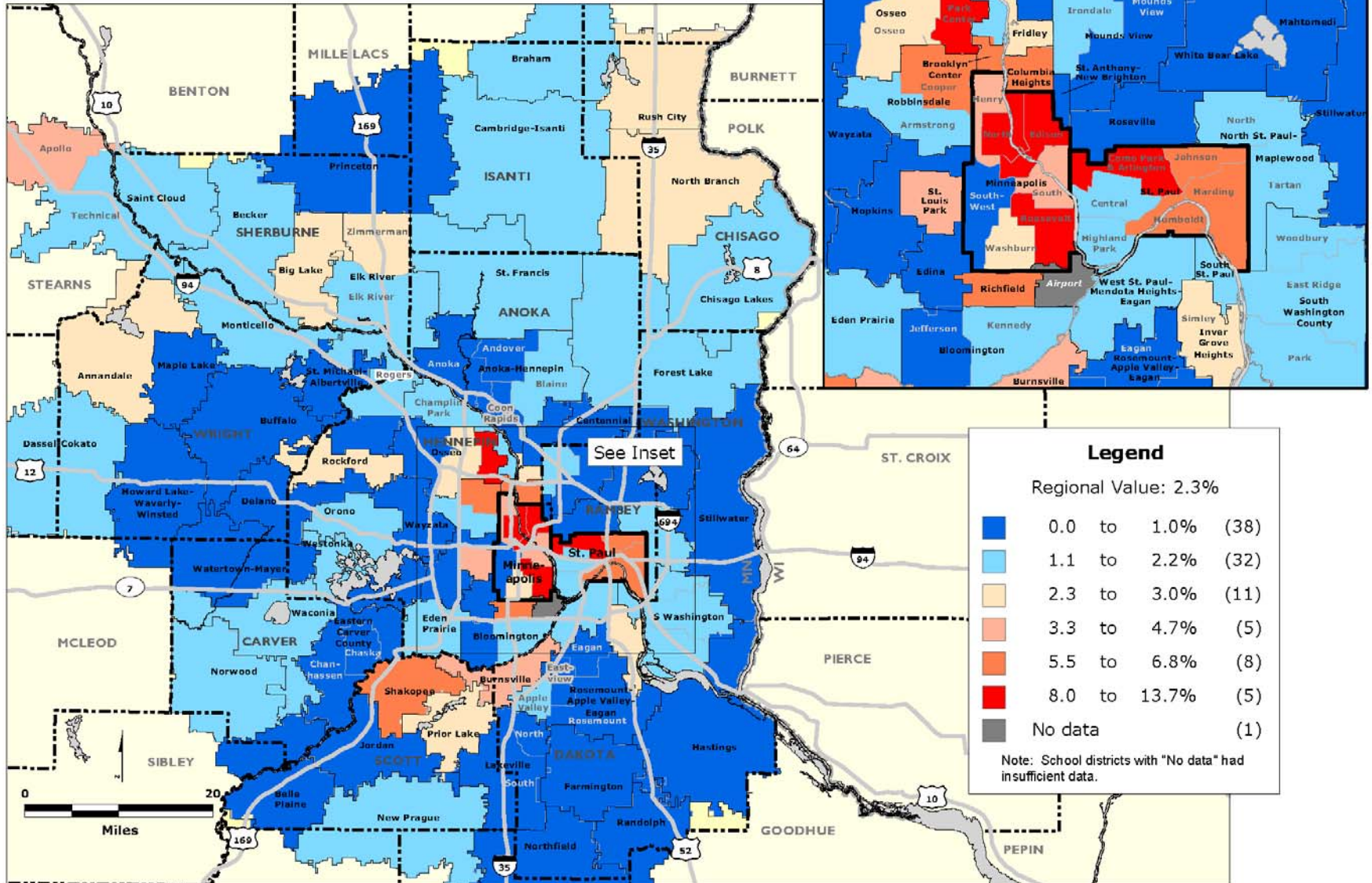


MINNEAPOLIS-SAINT PAUL REGION: Percentage of Elementary Students Eligible for Free or Reduced Lunch by School, 2009

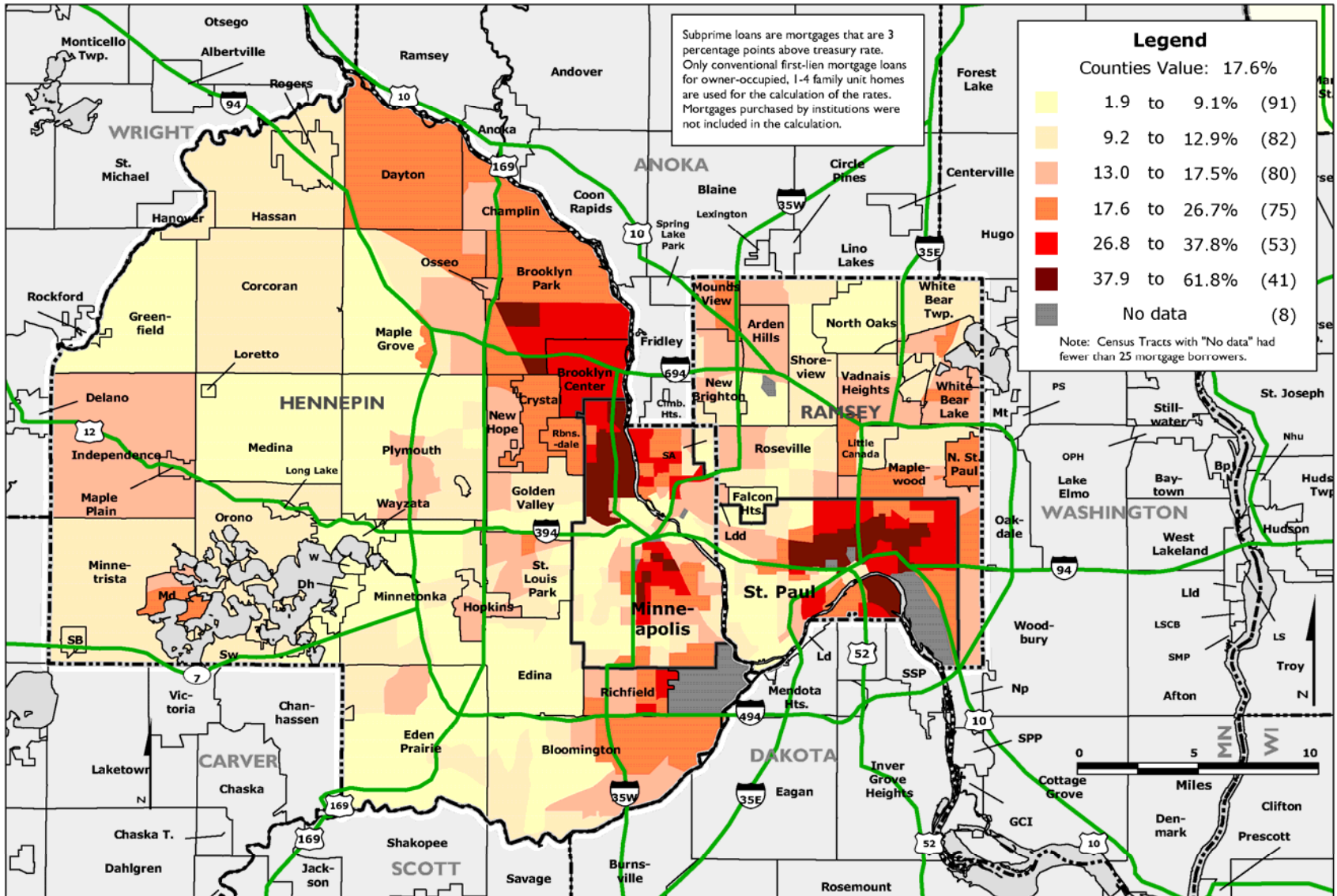


MINNEAPOLIS-SAINT PAUL REGION: Four Year Dropout Rate by High School Attendance Boundary, 2009-2010

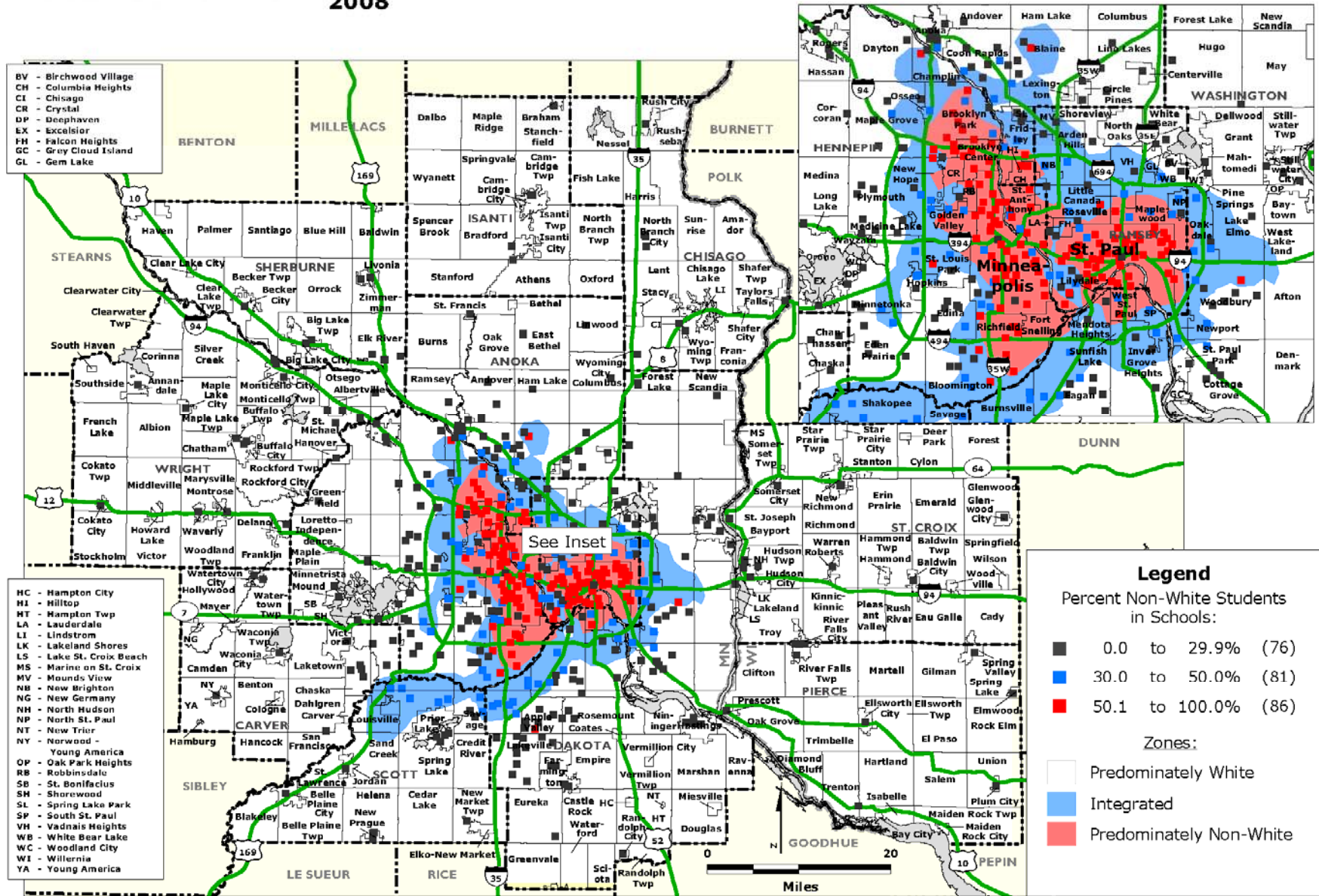
Note: The Four-Year Dropout Rate is based on a four-year cohort of first-time ninth grade students plus transfers into the cohort within the four-year period minus transfers out of the cohort within the four-year period. Students that dropped out were reported as dropping out of a MN public school and did not return.



Map 5: HENNEPIN - RAMSEY COUNTIES Percentage of Mortgage Loans that are Subprime by Census Tracts, 2004-2006

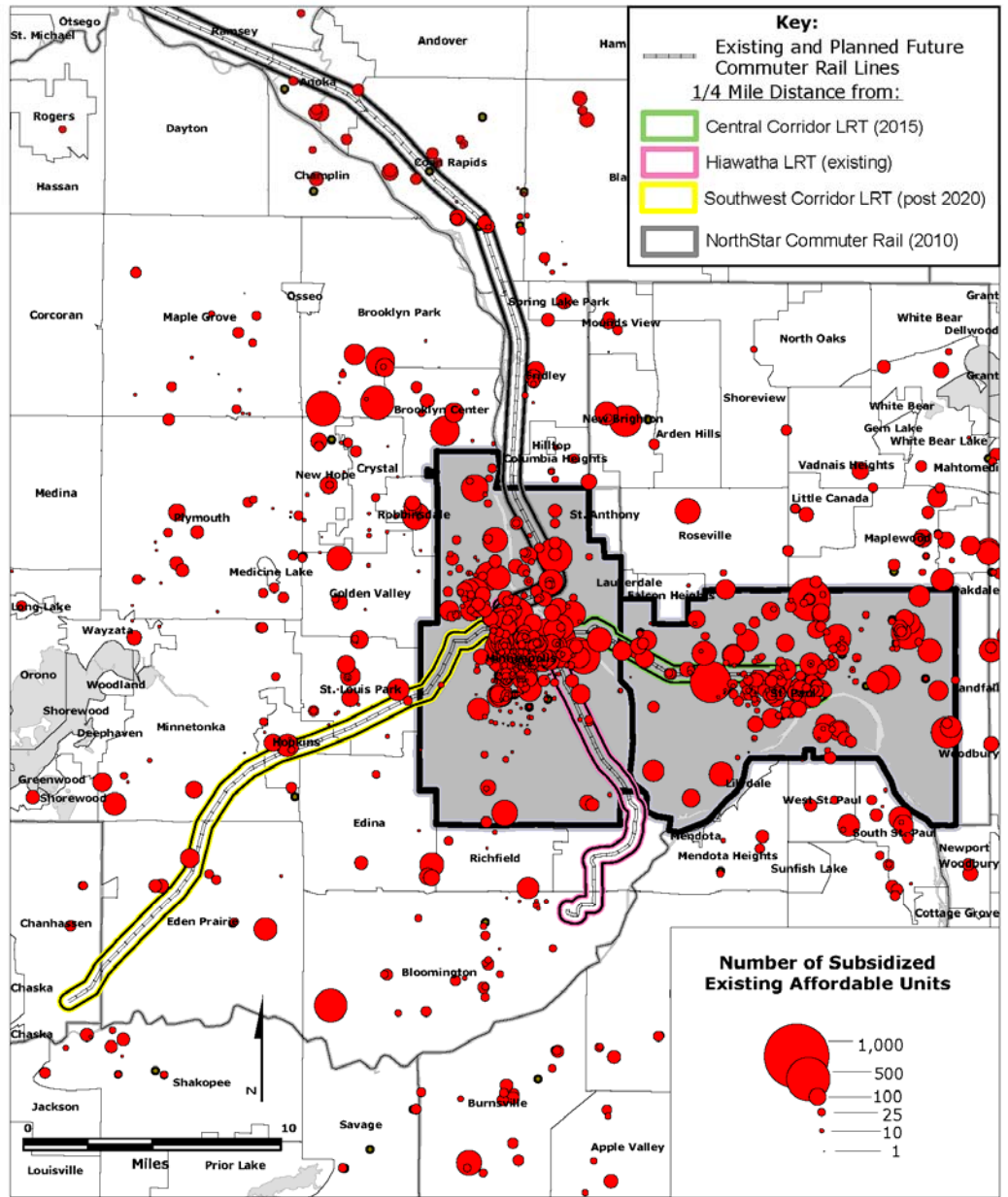


MINNEAPOLIS-SAINT PAUL REGION: Racial Composition of Public Elementary Schools, 2008



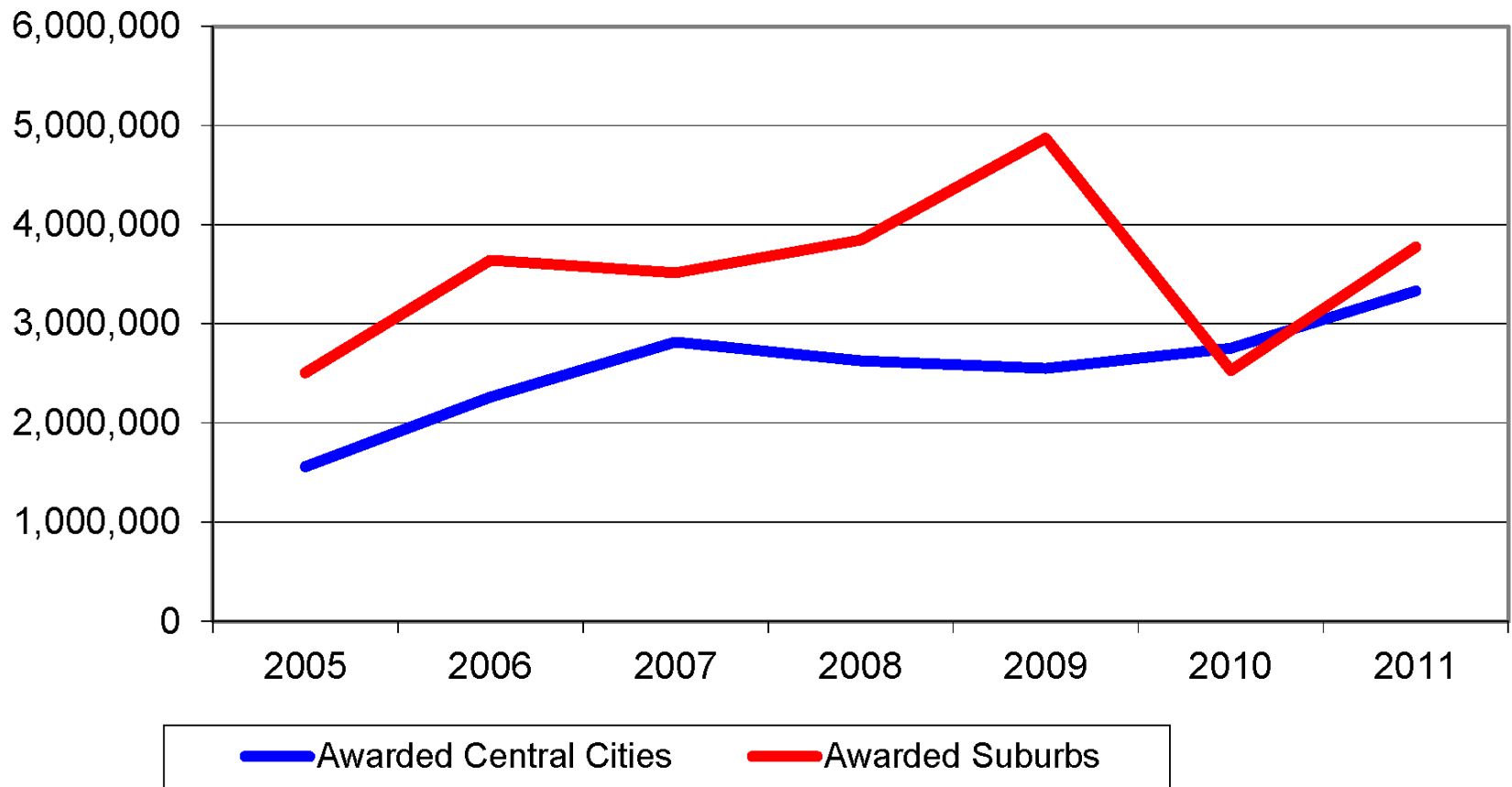
Data Source: Minnesota Department of Revenue.

MINNEAPOLIS - SAINT PAUL (Central Region) Existing Subsidized Housing (2007) and Planned or Existing Light Rail (LRT) and Commuter Rail



Data Source: Metropolitan Council and HousingLink

Low Income Housing Tax Credit Dollars Awarded to Projects in Twin Cities 7 County Area



**Number of HTC and Affordable Rental Units
by Percentage Minority in Census Tracts
in the Cities of Minneapolis and Saint Paul, 2005-2011**

% Minority in Tract	HTC Units	Rental Units Affordable at % of Regional Income		
		30%	50%	80%
0 to 19%	73	1,246	13,396	23,903
20 to 29%	263	2,135	9,963	16,023
30 to 49%	426	6,123	18,077	28,615
50 to 59%	200	2,915	8,823	12,693
60 to 79%	545	5,840	16,742	23,743
80% or more	329	3,628	6,779	9,690
Total	1,836	21,889	73,780	114,668

**Share of HTC and Affordable Rental Units
by Percentage Minority in Census Tracts
in the Cities of Minneapolis and Saint Paul, 2005-2011**

% Minority in Tract	HTC Units	Rental Units Affordable at % of Regional Income		
		30%	50%	80%
0 to 19%	4.0	5.7	18.2	20.8
20 to 29%	14.3	9.8	13.5	14.0
30 to 49%	23.2	28.0	24.5	25.0
50 to 59%	10.9	13.3	12.0	11.1
60 to 79%	29.7	26.7	22.7	20.7
80% or more	17.9	16.6	9.2	8.5
Total	100.0	100.0	100.0	100.0

Source: 2005-2011 Minnesota Housing Finance Agency, 2006-2010 American Community Survey

**Number of HTC and Affordable Rental Units
by Percentage Minority in Census Tracts
in the Twin Cities Suburbs, 2005-2011**

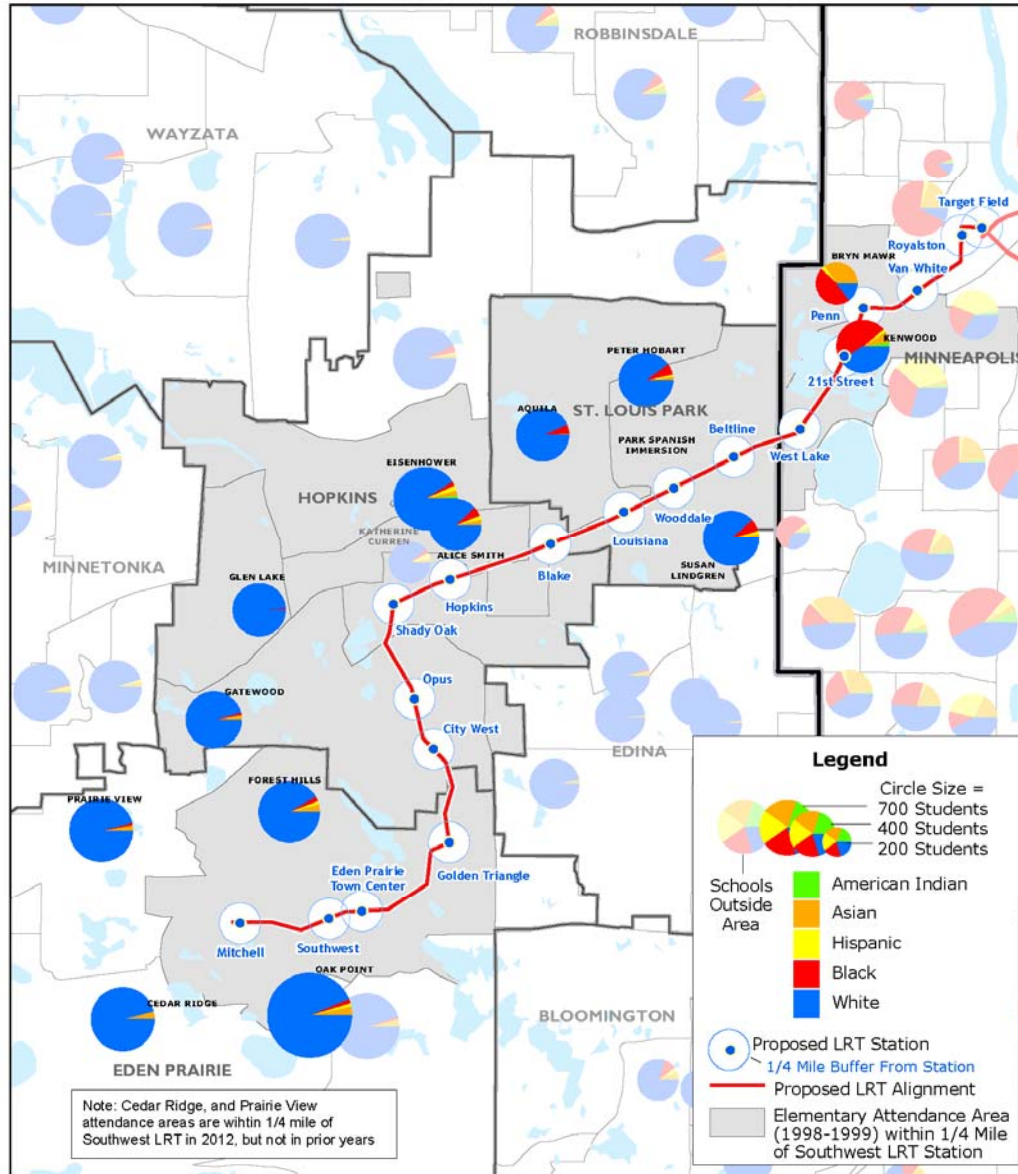
% Minority in Tract	HTC Units	Rental Units Affordable at % of Regional Income		
		30%	50%	80%
0 to 19%	1,127	6,954	26,301	60,473
20 to 29%	507	4,874	23,254	51,749
30 to 49%	282	1,905	12,398	25,412
50 to 59%	22	754	3,854	5,919
60 to 79%	0	295	3,029	4,174
80% or more	0	61	640	1,170
Total	1,938	14,843	69,476	148,897

**Share of HTC and Affordable Rental Units
by Percentage Minority in Census Tracts
in the Twin Cities Suburbs, 2005-2011**

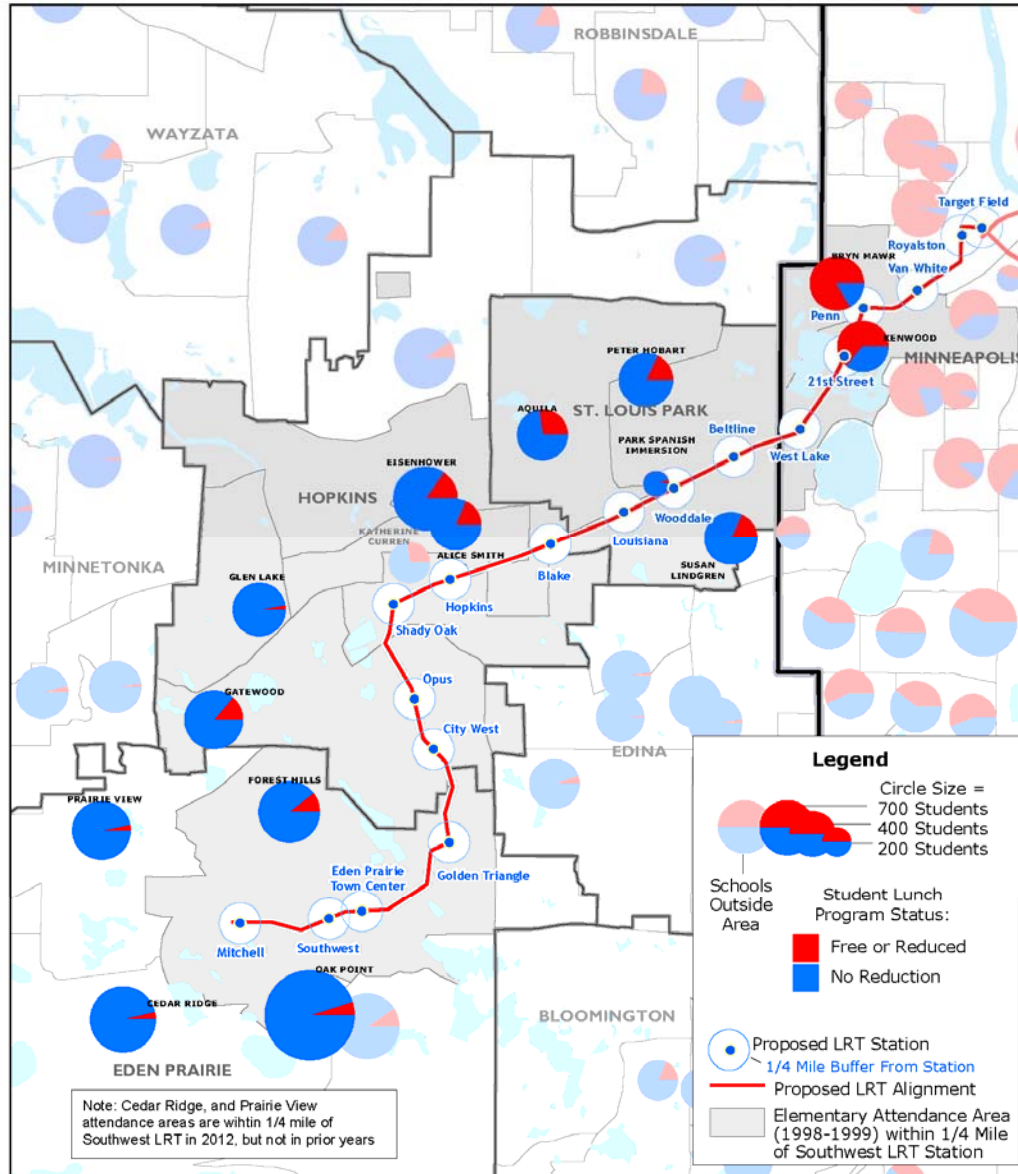
% Minority in Tract	HTC Units	Rental Units Affordable at % of Regional Income		
		30%	50%	80%
0 to 19%	58.2	46.9	37.9	40.6
20 to 29%	26.2	32.8	33.5	34.8
30 to 49%	14.6	12.8	17.8	17.1
50 to 59%	1.1	5.1	5.5	4.0
60 to 79%	0.0	2.0	4.4	2.8
80% or more	0.0	0.4	0.9	0.8
Total	100.0	100.0	100.0	100.0

Source: 2005-2011 Minnesota Housing Finance Agency, 2006-2010 American Community Survey

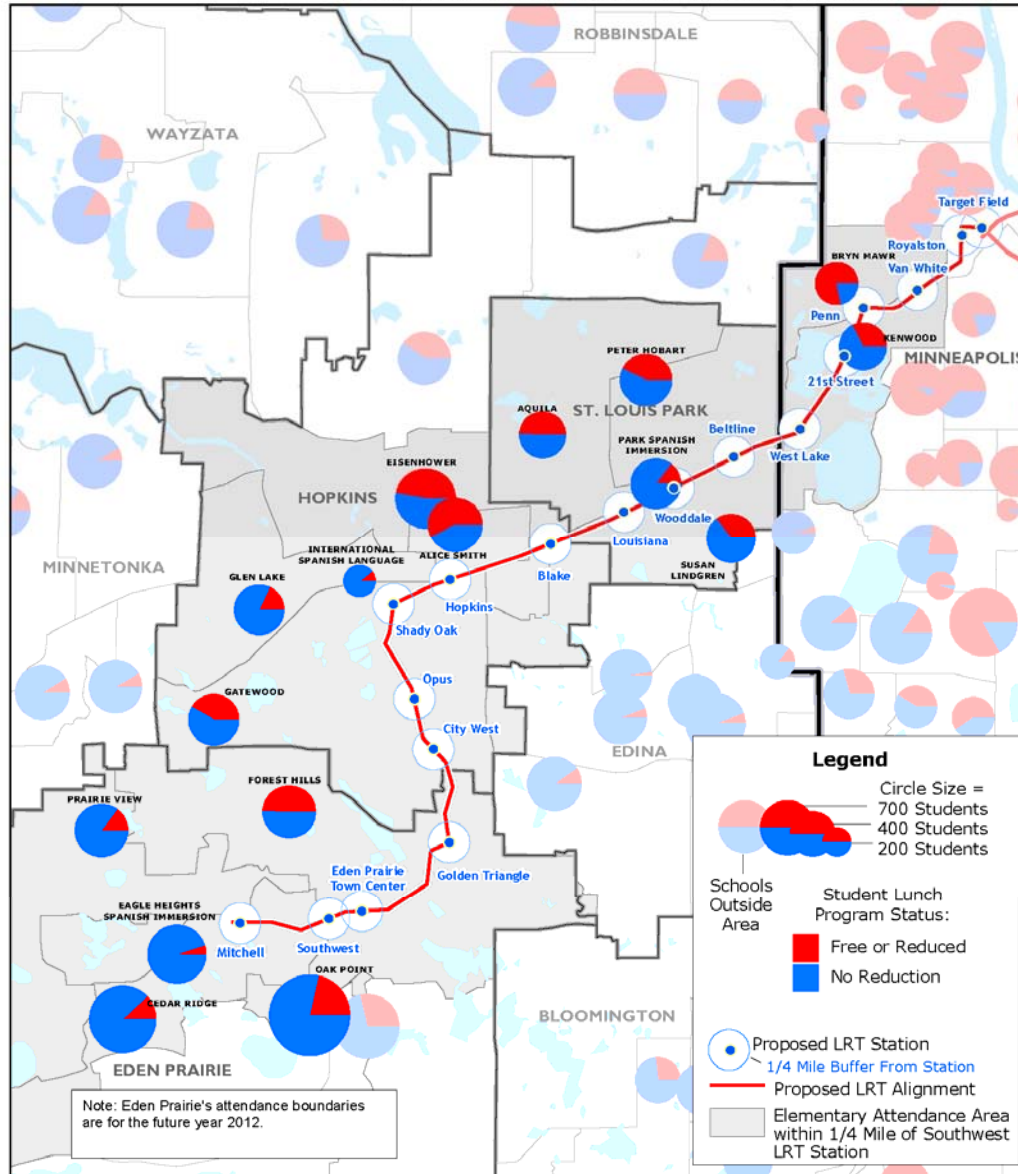
MINNEAPOLIS - SAINT PAUL SOUTHWEST REGION Race and Ethnicity of Students in Elementary Schools for the School Year 1995-1996 Near Proposed Southwest Corridor Light Rail Transit



MINNEAPOLIS - SAINT PAUL SOUTHWEST REGION Free and Reduced Lunch Eligibility of Students in Elementary Schools for the School Year 1997-1998 Near Proposed Southwest Corridor Light Rail Transit



MINNEAPOLIS - SAINT PAUL SOUTHWEST REGION Free and Reduced Lunch Eligibility of Students in Elementary Schools for the School Year 2010-2011 Near Proposed Southwest Corridor Light Rail Transit





Contact Us:

<http://www.irpumn.org>



institute on race & poverty

Research, Education and Advocacy