



Regional Parks System Overview

Committee of the Whole
October 19, 2011



2030 Regional Parks Policy Plan



2030
Regional Parks
Policy Plan

Update Adopted December 8, 2010



Regional Park Implementing Agencies

- Anoka County
- Carver County
- Dakota County
- Ramsey County
- Scott County
- Washington County
- Bloomington
- Minneapolis Park & Recreation Board
- St. Paul
- Three Rivers Park District



Regional Parks System

- 39 regional parks
- 12 park reserves
- 7 special recreation features
- 38 regional trails
- **40.8 million annual visits**



Long Lake Regional Park
Ramsey County



Baker Park Reserve
Three Rivers Park District



Mississippi River Regional Trail
Anoka County



Como Zoo & Conservatory
St. Paul



Regional Parks Policy Plan Policies

- **Siting and Acquisition**

- Protect high quality natural resource lands for recreation and conservation

- **Finance**

- Provide adequate and equitable funding for acquisition, rehabilitation and development



Cottage Grove Ravine Regional Park
Washington County

- **Planning**

- Promote master planning across jurisdictions



Regional Parks Policy Plan Policies

- **Recreation Activities and Facilities**

- Provide regional system of recreational opportunities for all residents, while maintaining the natural resource base

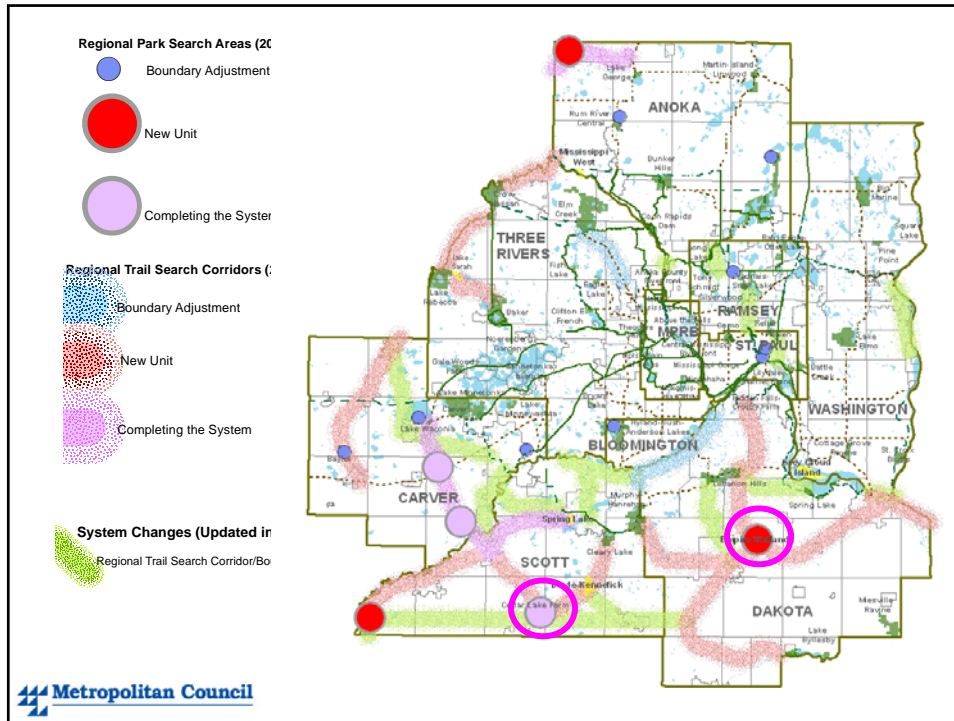
- **System Protection**

- Protect the public investment in acquisition and development



Minnehaha Regional Park
Minneapolis Park & Recreation Board





Future Regional Parks System Issues

- **Regional Trail Development**
 - Connections to regional parks, transit, community destinations
 - Greenways and natural resource protection
 - Wayfinding
- **Brownfields**
 - Reclamation of land for parks and trails



Bruce Vento Regional Trail
St. Paul

Future Regional Parks System Issues

- **Balance**

- Urban park needs vs. newer systems



Central Mississippi Riverfront Regional Park
Minneapolis Park & Recreation Board

- **Equity**

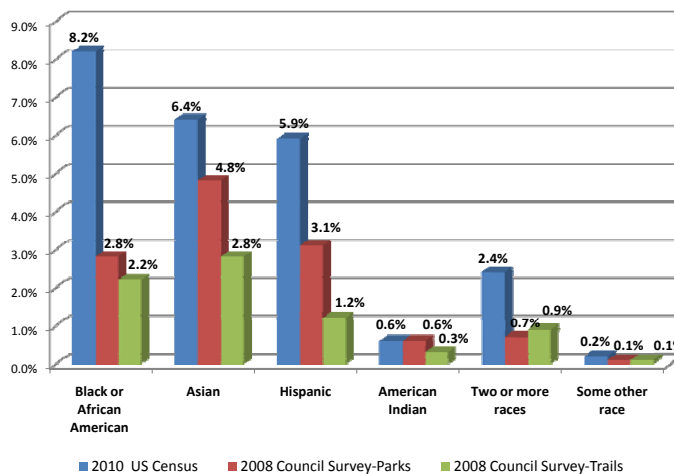
- Transit access to regional parks and trails
- Minority use of regional parks and trails



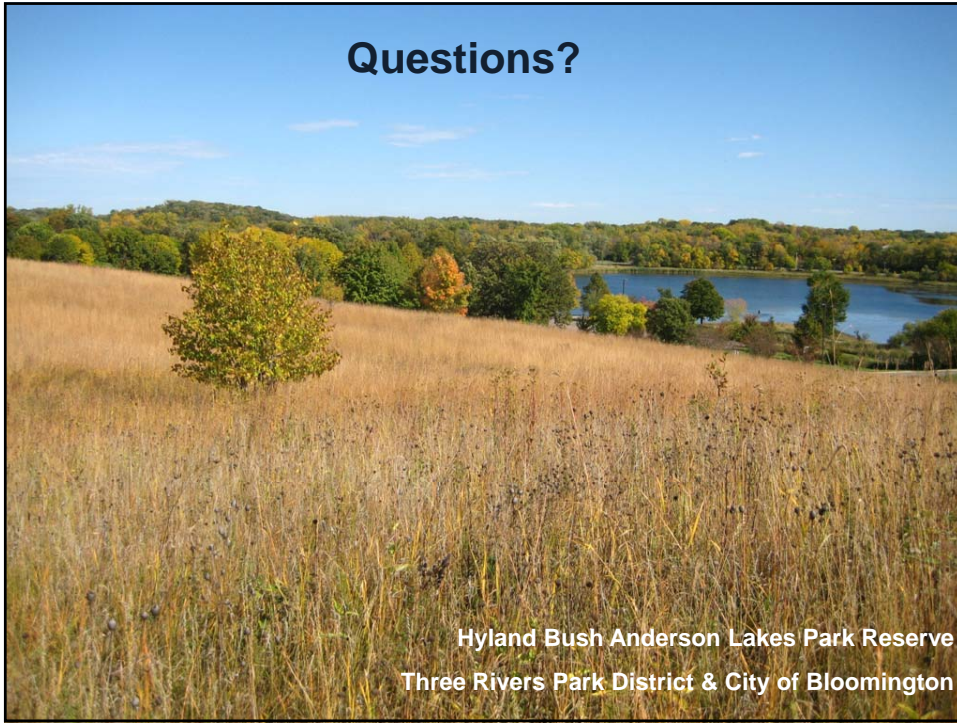
Cedar Lake Farm Regional Park
Scott County



Minority Use of Regional Parks and Trails



Questions?



Hyland Bush Anderson Lakes Park Reserve
Three Rivers Park District & City of Bloomington